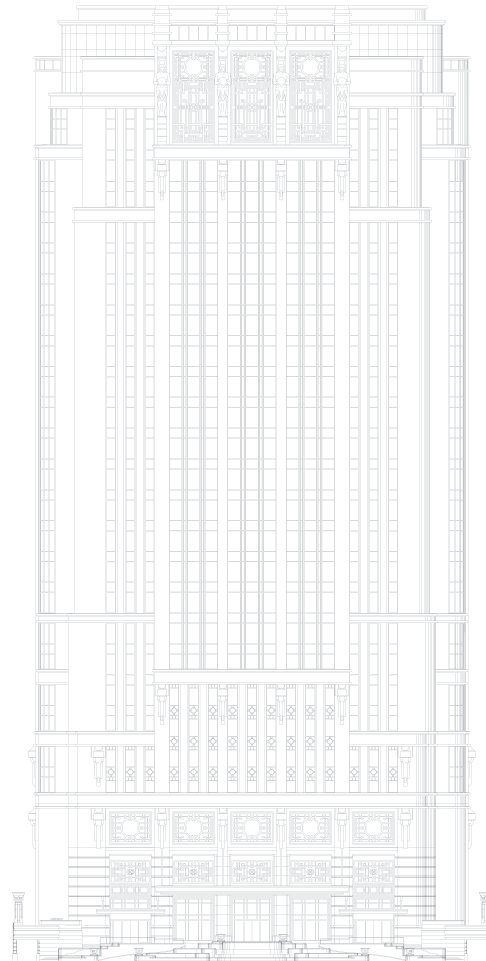




ATLAS

THE ATLAS COLLECTIONS





Dear Guests,

Welcome to ATLAS - a labour of love that honours my grandfather, CS Hwang, the late founder of Parkview Group, and the beautiful space he created in which ATLAS resides. It is our hope that your experience at ATLAS reflects the passion and attention that has gone into every aspect of its creation. A grand and beautiful space, we invite you to unwind, enjoy, celebrate and indulge as our talented and dedicated ATLAS team makes you feel most welcome and at home.

The ATLAS Collections feature two of the world's most remarkable physical collections of Gin and Champagne. Building the ATLAS Collections was a monumental task which took over two years to curate and assemble. We are also delighted to feature a selection of rare and exceptional still wines and whiskies from my own family's private cellar, which for the first time since its inception almost 40 years ago, has been opened especially for our guests at ATLAS.

Building upon the modest collection of wines started by my grandfather, the Parkview Family Cellar found a permanent home in 1989 with the opening of the Parkview Group's flagship property, Hong Kong Parkview. Initially consisting of a small collection of 50 bottles of right bank Bordeaux wines, the collection grew steadily under the stewardship of my uncle, George Wong, and his son Alex.

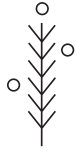
By 2000, the collection was at 3,000 bottles and has now expanded beyond the right bank to other regions in France and the rest of the world. Currently, the collection stands at 50,000 bottles of fine wine and over 10,000 bottles of whiskey acquired through reputable merchants, auctions, and numerous trips to the wineries and distilleries where suppliers have now become close friends, ensuring that the family always has access to the finest and rarest bottles.

For those who share our genuine passion for fine wines and spirits, a small but special sampling of the bottles from the Parkview Family Cellar have been brought to ATLAS for you to enjoy. We hope that you are able to try things here that you would otherwise not find; and that you will enjoy our treasures as much as we have enjoyed collecting them and sharing them with you.

Warmest regards,

Vicky Hwang

TABLE OF CONTENTS



THE ATLAS GIN COLLECTION

Introduction by the ATLAS Master of Gin

Countries Represented

A Guide to the Wonderful World of Gin

Our Taxonomy of Taste

Seven Most Common Botanicals

The Search for the Perfect Pairing

GIN CATEGORIES

London Dry

Modern

Overproof and Navy Strength

Barrel-Rested

Old Tom

Sloe Gin

Genever

Rare & Collectable



FINE SPIRITS OF THE WORLD

Whisk(e)y

Brandy

Sugarcane

Agave

Vodka

Absinthe

Vermouth

Aperitif

Digestif

Liqueur



THE ATLAS CHAMPAGNE COLLECTION

La Sélection

Le Terroir

La Prestige

FINE WINES OF THE WORLD

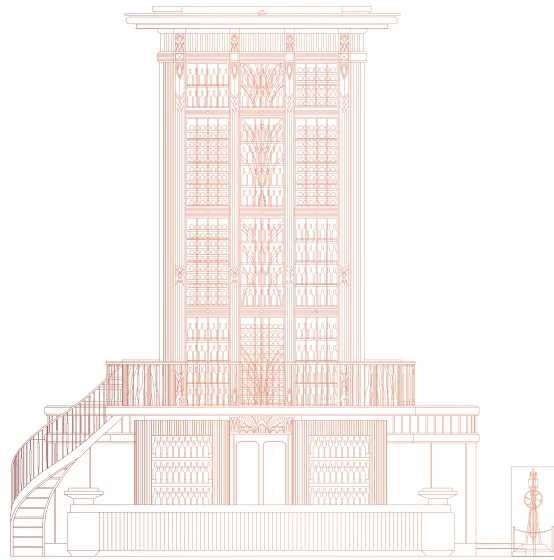
White

Rosé

Red

Sweet

THE ATLAS GIN COLLECTION



Gin; a clear alcoholic spirit distilled from grain and flavoured with juniper berries (and other botanicals). The name is derived from the French genièvre or the Dutch jenever, which both mean juniper.

Juniper; an evergreen, dioecious shrub that grows all throughout the Northern Hemisphere. It produces a long ripening berry that when dried can impart a piney, citrusy, floral aroma and flavour.



Welcome to the ATLAS Gin Collection; a labour of love that has involved collecting, carefully curating and cataloguing the entire world of gin. Our aspiration is to introduce our guests to the beauty and wonder of this incredible spirit.

Gin is liquid history. From the tombs of ancient Egypt, the monasteries of the Middle Ages, the laneways of the Industrial Revolution, through Prohibition and to the current Second Golden Age of fine drinking, gin has been drunk by all classes and in all corners of the globe. For over two millennia juniper berries have been used for ritual, medicinal and gastronomic purposes. For almost 1,000 years, this unique botanical has been used in fine beverages, namely gin.

Gin is provenance; it looks to the natural world for flavour, aroma and sensation. Gin is the quintessential cocktail ingredient, and since the turn of the twentieth century has been a bartender's favourite cocktail spirit. It is a beacon for sophistication and style, yet is founded upon mayhem and grit. Gin is a delicious spirit; it runs the gamut of fresh, vibrant and zesty, to floral, soft and delicate. It can be robust and bracing, it can be savoury and spiced.

Here at ATLAS, we are delighted to share one of the world's finest collections of gin with you. We have arranged our gins into seven different categories, therein lies numerous flavour profiles, botanicals and expressions of the juniper spirit. Our passionate and dedicated gin team stands ready to assist you in your gin journey.

Jason Williams

Founding Curator of the Gin Collections, Master of Gin

The ATLAS Gin Collection

Argentina (1)	Kenya (3)
Australia (116)	Latvia (1)
Austria (7)	Lithuania (1)
Belgium (49)	Luxembourg (1)
Brazil (5)	Mexico (3)
Cambodia (2)	Netherlands (88)
Canada (35)	New Zealand (30)
China (5)	Norway (4)
Colombia (2)	Peru (2)
Croatia (1)	Philippines (4)
Czech Republic (2)	Poland (2)
Denmark (2)	Portugal (8)
England (366)	Romania (1)
Estonia (3)	Scotland (118)
Finland (13)	Singapore (11)
France (36)	South Africa (39)
Germany (60)	South Korea (2)
Greece (3)	Spain (59)
Hong Kong (3)	Sri Lanka (3)
Hungary (1)	Sweden (14)
Iceland (3)	Switzerland (23)
India (9)	Taiwan (2)
Indonesia (2)	Thailand (5)
Ireland (31)	United States of America (135)
Israel (2)	Venezuela (1)
Italy (49)	Vietnam (7)
Japan (33)	Wales (10)

THE 'GIN RATION' DECREE

The ATLAS Gin Collection is a rare and special treasure, designed to be enjoyed by all. As such, we must insist on a Gin Ration, just like the old days in the Royal Navy in the United Kingdom. For the special gins in our collection – those where only one or two bottles have been carried from afar - guests are allowed just one pour of each gin per visit to ATLAS.

If you love gin as much as we do, or would like to taste even more of the rare gins that arrive at ATLAS, please ask about becoming a member of our Juniper Society.

◊ denotes gins that are subject to the Gin Ration.

A GUIDE TO THE WONDERFUL WORLD OF GIN

The world of gin has become wide and deep. Furthermore, there is a distinct lack of categorisation compared to other spirits, such as Tequila or Cognac. To help you navigate our remarkable gin collection we have split the gins into the following categories:

LONDON DRY

The archetypal style of gin. The most traditional and what most people know as Gin. Legally defined by production technique: a distilled gin with real botanicals and nothing added after distillation. Actually, it does not have to be made in London and usually has more prominent juniper representation.

MODERN

We define (loosely, admittedly) modern gin as one that doesn't fit the juniper-forward London Dry Gin style. Gins that celebrate or highlight an abundance of botanicals, or have an emphasis on fruit or spice, or gins that champion location or technique.

OVERPROOF AND NAVY STRENGTH

Gin has a rich history within the British Royal Navy, for centuries it was issued to all ships sailing the high seas. Traditionally, to prove its strength and quality, it had to be able to wet and ignite gun powder. Over time it was deduced that the lowest proof for this experiment to succeed was 114 proof, or 57% abv (alcohol by volume). This higher proof makes the gin and the botanicals shine.

BARREL-RESTED

When a gin has been stored in a wooden cask for a period of time, imparting some of the colour and character of said wood, it is classified as a barrel-rested gin. A sub-category that has boomed in recent years but has historical precedents. Once upon a time, all gins would have been stored and transported in a barrel!

OLD TOM

A style of gin popular in the 18th and 19th century in a time when techniques such as sweetening or the addition of extra botanicals were used to mask the flavour of poorly made (or dangerous) gins. Now it is back in a more craft iteration with variations including different sugars and wood ageing.

SLOE GIN

Actually a gin liqueur, this is a traditional drink from the English countryside. Made from sloes, the plum-like fruit that grows on blackthorn hedgerows dividing old properties. Simply gin, sloe berries and sugar.

GENEVER

Not actually gin! We keep a hefty collection of this because it's important to the history of gin. This mostly Dutch spirit is considered the precursor to what we know as gin. It's kind of like a mix between unaged whisky and gin. It is sweet, and very cereal-like.

*after this categorisation, we further split the gins into flavour profiles.
we invite you to explore our taxonomy of taste next!*

OUR TAXONOMY OF TASTE

Through much research, testing and the resulting inebriation (hiccup), the ATLAS Team landed upon the following terminology to best convey the flavour profile of our gins. The taxonomy is meant as a guide and within each designation the prominence of that sensation may vary wildly. Taste is subjective, so go easy if you disagree!

CITRUS

bright, zingy, refreshing

Bright, fresh, blossomy goodness. Can be a burst of orange sherbet, a suggestion of lemon curd. Some zesty lime skin or sweet, bitter grapefruit. Can be a restrained hint of citrus pith. An explosion of perfumed citronella.

FLORAL

bouquet, perfumed blooms, petals

A bouquet of excellence. The new modern of deliciousness. Sometimes perfumed blooms of all manner of flowers, petals, stalks and dried spices. Other times more restrained, with subdued fragrance of sweet flower-wonder.

HERBAL

fresh bunch, dried leaves, vegetal

Tight bunches of all herbs. Fresh, wet and dried. Fossilized herbs with tannic tea leaves. The snapped stalk of an old rosemary bush. Sweet basil and herbs de Provence. Sometimes pungent, sometimes mild.

SPICED

peppers, baking spices, fragrant

Lifted baking spices, exotic peppers, fragrant arboreal notes mixed with subtle sweet aromatic dried wood. Maybe a little tingle, maybe a little dessert-like spice. Maybe like a sauna with the heat turned up.

LUSCIOUS

delicate, velvety sweetened, scrumptious

Vibrant, lifted botanicals. Extra flowers, fruits, herbs and spices to give deliciousness. Often delicate and balanced with sophisticated lusciousness. Sometimes confectionary with over-the-top youthful fruitiness.

NUTTY

rustic, woody, savory edge

Rustic candy of the earth. Nuts and seeds and kernels of all sorts. Ground-up woody flavour mixed with some sweet chalk, and soft spice. Oily sometimes, brown and beige and sweet and nice with a savoury edge.

EARTHY

dark rich soil, turf, wet leaves

Dark rich soil, wet leaves and turf. Chalk-like with a combination of menthol, compost and forest floor. Can be recognized as fresh earth, withering underlay or top notes of perishing leaves.

GRASSY

greenness, tall grass, meadow

Sweet, greenness. Long stalks of fresh tall grass. Reeds, grass clippings, just-cut soft herbs and a meadow blanket of lively fresh lawn. Some straw-like bundles of hay.

BERRIES

plump, roundness, jammy

Plump, fruity roundness. Darker and sweeter fruity notes and some left-on-the-vine ripeness. Notes of something jammy, fruit preserves like strawberry or plum or of course those blackthorn sloes.

FRUITY

exotic, audacious, not fruit flavoured

Audacious and fun-loving. Packed full of who-knows-what. Exotic fruits, flowers and other botanicals from around the world. Modern iterations of traditional gin. Not fruit-flavoured gins, but distilled gins with an emphasis on fruity flavour.



SEVEN MOST COMMON BOTANICALS

JUNIPER

Gin has to have this to be called gin. A small dried berry. Smells and tastes like spruce and pine. Nice burnt citrus, underripe plum and dry branch. Forest floor, in a good way.

CORIANDER SEED

In nearly all gins. This is the spicy, woody little seed from the bush. This botanical gives gins a lifted citrus quality when there is no citrus. Sweet, spicy wet wood and lemon sherbet.

ANGELICA

The third most used botanical. Usually the root. Musky, woody and more earthy than the other spices in the 'holy trinity'. Known as a fixative spice to help the others shine.

NUTMEG

A staple on spice shelves and native to South East Asia. Another warming, spiced botanical that gives gins some extra length on the palate. Used widely in cooking, cosmetics and gin.

ORRIS

The dried root of the iris plant. Used as a base ingredient to bind other ingredients together, similar to how it's used in perfumery. By itself it can give off a floral, violet petal like aroma.

CASSIA

The bark from an evergreen tree native to South Asia. Resembling cinnamon, it has a distinct, sweet, fiery yet warming fragrance. It has a delightful pungency that adds warmth and depth to a gin.

LEMON

While other botanicals can give the impression of citrus, dried lemon peel is often the contributor. It gives a fresh brightness. The result can vary from confectionery to real, bite-a-lemon sensation.





THE SEARCH FOR THE PERFECT PAIRING

Tonic water was first used as a medicinal treatment for malaria by British troops in the 19th century. To counter the bitterness of early iterations of tonic, gin was mixed with tonic to make it more palatable. And thus, the G+T was born. The most celebrated pairing in any spirit category, the two-letter combination everyone knows.

Choosing the right tonic is as vital as choosing your gin. We have suggested pairings below, a wealth of possibilities await.

East Imperial ATLAS Tonic

classic, the highest quinine available, a hint of lemongrass
enjoy with citrusy, spiced and earthy gins

East Imperial Yuzu Tonic

aromatic, sweet yet strong, japanese citrus fruit
enjoy with citrusy, herbal and grassy gins

East Imperial Royal Botanic Tonic

lifted quinine, with elderflower, notes of ruby grapefruit
enjoy with citrusy, floral and fruity gins

Ekobryggeriet Rhubarb

tart, with soft strawberry and green apple
enjoy with spiced, luscious and floral gins

Fever Tree Mediterranean Tonic

fragrant, with the addition of soft herbs and lemon thyme
enjoy with spiced, nutty and earthy gins

Franklin & Sons Elderflower & Cucumber

crisp undertone with delicate elderflower
enjoy with fruity, luscious and citrusy gins

Franklin & Sons Mallorcan

savoury, with aromatic rosemary & thyme and zesty citrus
enjoy with citrusy, herbal and floral gins

London Essence Grapefruit & Rosemary Tonic

herbaceous, subtle quinine with zesty citrus
enjoy with floral, luscious and berry forward gins

London Essence Blood Orange & Elderflower

honeyed, zesty & fresh, with tangy blood orange
enjoy with citrusy, herbal and grassy gins

Thomas Henry Pink Grapefruit

sharp, refreshing with zesty grapefruit
enjoy with spiced, luscious and floral gins

East Imperial Soda Water

zero quinine, ideal for letting the botanicals shine
enjoy with citrusy, floral and spiced gins

tonic to pair with your choice of gin

add 3.5

LONDON DRY

The archetypal style of gin. The most traditional and what most people know as Gin. Legally defined by production technique: a distilled gin with real botanicals and nothing added after distillation. Actually, it does not have to be made in London and usually has more prominent juniper representation.

CITRUS

BRIGHT, ZINGY, REFRESHING

AUSTRALIA			
◊ Naught Classic Dry Gin, 44%	25	◊ Boxer Gin, 40%	26
<i>orange, coriander seed, juniper</i>		<i>bergamot peel, nutmeg, cinnamon</i>	
◊ Settler's Rare Dry Gin, 43%	22	◊ Brennen & Brown Colonial Gin, 43%	26
<i>muntries, orange, lemon myrtle</i>		<i>liquorice, orange peel, lemon peel</i>	
◊ Stone Pine Distillery Original Dry Gin, 40%	28	◊ British Polo Gin No.3, 42.7%	28
<i>lemon myrtle, pink finger lime, orange</i>		<i>elderflower, vanilla, lemon peel</i>	
AUSTRIA		◊ Broker's Gin 40%, 40%	20
◊ J.A. Baczewski Dry Gin, 43.5%	22	<i>lemon peel, nutmeg, orange peel</i>	
<i>aniseed, dill, ginger</i>		◊ Burleighs London Dry Gin, 40%	22
◊ The Good Gin, 47.4%	30	<i>silver birch, dandelion, elderberry</i>	
<i>orange zest, turmeric, raw cacao</i>		◊ Chase Williams Elegant Gin, 48%	24
BELGIUM		<i>bramley apple, angelica, lemon peel</i>	
◊ Filliers Classic Dry Gin 28, 46%	32	◊ Connaught Bar Gin, 44%	46
<i>hops, allspice, fresh orange</i>		<i>bordeaux wine, nutmeg, lemon peel</i>	
◊ Filliers Dry Gin 28 Tangerine Seasonal Edition, 43.7%	36	◊ Curio Rock Samphire Gin, 41%	26
<i>tangerine, allspice, hops</i>		<i>rock samphire, seaweed, lime flower tea</i>	
◊ Gillemore Magical Gin, 46%	38	◊ Dr. J's Gin, 45%	28
<i>grains of paradise, cubeb, orange peel</i>		<i>coriander, orange zest, macadamia nut</i>	
ENGLAND		◊ East London Liquor Co. Dry Gin, 40%	22
◊ 6 O'Clock Gin, 43%	26	<i>lemon peel, grapefruit peel, cardamom</i>	
<i>elderflower, winter savory, orange peel</i>		◊ Fifty Pounds Gin, 43.5%	28
◊ Ampersand Gin, 40%	26	<i>savory, nutmeg, lemon peel</i>	
<i>orange peel, lemon peel, cubeb</i>		◊ Fords Gin, 45%	20
◊ Bankes Gin, 43%	26	<i>angelica, jasmine, cassia</i>	
<i>coriander, orange peel, lemon peel</i>		◊ Foxdenton Estate London Dry Gin, 48%	26
◊ Bath Gin, 40%	28	<i>lime flower oil, orris root, coriander</i>	
<i>cassia, wormwood, kaffir lime leaf</i>		◊ Gin Kitchen Dancing Dragontail Summer Gin, 48%	28
◊ Beefeater Crown Jewel Gin, 50%	26	<i>green cardamom, pink grapefruit, juniper</i>	
<i>grapefruit peel, bitter almond, liquorice</i>		◊ Greenall's London Dry Gin, 37.5%	22
◊ Beefeater 24 Gin, 45%	22	<i>liquorice, lemon peel, coriander</i>	
<i>sencha, chinese green tea, grapefruit rind</i>		◊ Hayman's London Dry Gin, 40%	20
◊ Beefeater London Dry Gin, 40%	20	<i>nutmeg, lemon peel, orange peel</i>	
<i>almonds, orris root, seville oranges</i>		◊ HYKE Gin, 40%	24
◊ Bombay Sapphire Premier Cru Gin, 47%	22	<i>lemon zest, rooibos, myrrh</i>	
<i>murcian lemon, mandarin orange, sweet orange</i>		◊ Keepr's 1606 Gin, 43%	38
		<i>lemon peel, orange peel, angelica</i>	
		◊ King of Soho Gin, 42%	22
		<i>grapefruit peel, angelica, cassia</i>	
		◊ Kokoro Gin, 42%	22
		<i>sansho berries, almond, liquorice</i>	

LONDON DRY - CITRUS

◇ Little Bird London Dry Gin, 41.6% <i>pink grapefruit, sweet orange peel, ginger</i>	22	Whitley Neill Dry Gin, 42% <i>baobab fruit, cape gooseberry, orange peel</i>	22
◇ London 40 Gin, 40% <i>almond, nutmeg, angelica</i>	22	Whitley Neill Connoisseur's Cut Gin, 47% <i>pink grapefruit, liquorice, coriander</i>	20
◇ London Hill Dry Gin, 40% <i>lemon peel, sweet orange peel, coriander</i>	20	Widges London Dry Gin, 41% <i>cardamom, orange peel, coriander</i>	18
◇ Lord Astor London Dry Gin, 42% <i>cassia, lemon peel, orange peel</i>	22	GERMANY	
◇ Manchester Gin, 42% <i>dandelion, burdock, liquorice</i>	24	◇ Berliner Brandstifter Berlin Dry Gin, 43.3% <i>woodruff, cucumber, malva</i>	32
◇ Marks & Spencer No. 02 Zesty Gin, 41.6% <i>orange peel, liquorice, angelica</i>	22	◇ Brick Gin, 40% <i>juniper, lemon peel, cubeb</i>	26
◇ Masons Dry Yorkshire Gin, 42% <i>cardamom, fennel seed, fresh lime peel</i>	26	◇ Sul Gin, 43% <i>rockrose, allspice, lemon peel</i>	28
No. 3 London Dry Gin, 46% <i>orange peel, angelica, grapefruit peel</i>	24	◇ The Duke Munich Dry Gin, 45% <i>orange blossom, cubeb, ginger</i>	28
◇ Palmer's 44 London Dry Gin, 44% <i>grapefruit peel, angelica, cassia</i>	22	◇ Van Laack Dry Gin, 42% <i>juniper</i>	38
◇ Pink 47 Gin, 47% <i>almond, nutmeg, angelica</i>	22	INDIA	
◇ Portobello Road No.171 London Dry Gin, 42% <i>bitter orange peel, lemon peel, nutmeg</i>	22	Greater Than Gin, 40% <i>chamomile, ginger, orange peel</i>	22
◇ Rathbone New London Dry Gin, 40% <i>lemon peel, juniper, coriander</i>	22	IRELAND	
◇ Rokeby's Half Crown London Dry Gin, 40.6% <i>juniper, lemon peel, coriander</i>	22	◇ Echlinville Single Estate Irish Pot Still Gin, 46% <i>elderflower, lemon peel, sweet kelp seaweed</i>	32
◇ Salcombe First Bottling Limited Edition Gin, 44% <i>cubeb berry, lime peel, fresh grapefruit</i>	36	◇ Feckin Irish Gin, 40% <i>fresh lemon, cassia, angelica</i>	26
◇ Scout & Sage London Dry Gin, 40% <i>seville orange, lemon, pink pepper</i>	26	◇ Jawbox Gin, 43% <i>cardamom, lemon peel, liquorice</i>	22
Sipsmith London Dry Gin, 41.6% <i>liquorice, coriander, angelica</i>	24	◇ Shortcross Small Batch Gin, 46% <i>elderflower, elderberry, orange peel</i>	24
◇ Sis4ers Signature Dry Gin, 40% <i>mastic, lemon, orange</i>	26	ITALY	
SoulSisters Melaka Edition Gin, 40% <i>candlenut, torch ginger, pomelo</i>	22	◇ Family of Hounds, 42% <i>lavender, orange peel, pink grapefruit</i>	24
◇ SW4 London Dry Gin, 40% <i>orris powder, lemon peel, cassia</i>	22	Milano Giass Dry Gin, 42% <i>melissa leaf, golden apple, hibiscus</i>	30
◇ That Boutique-y Miyagawa Citrus Gin, 46% <i>miyagawa, lime, douglas fir</i>	32	◇ Occitan London Dry Gin, 42% <i>cardamom, orange peel, lemon peel</i>	22
◇ The Sting London Dry Gin, 40% <i>cinnamon, lemon peel, orange peel</i>	24	NETHERLANDS	
◇ The Sweet Potato Spirit Co. London Dry Gin, 45% <i>lemon zest, cardamom, juniper</i>	32	◇ Goodmans Gin, 44% <i>cardamom, liquorice, grains of paradise</i>	22
◇ The Tottering Sharpener Gin, 45% <i>coriander, lemon peel, lime flower</i>	26	◇ Three Corner Dry Gin, 42% <i>juniper, lemon zest</i>	28
◇ Trevethan Cornish Gin, 43% <i>elderflower, gorse, lemon peel</i>	28	NEW ZEALAND	
◇ Vryheid Gin, 44% <i>sweet lemon rind, oak, orange blossom honey</i>	28	Denzien Our Coast Gin, 40% <i>sea salt, kelp, wormwood</i>	30
◇ Weetwood Gin, 42% <i>blackcurrants, bitter orange peel, sweet orange peel</i>	26	◇ Juno Gin, 40% <i>kaffir lime leaf, green cardamom, manuka</i>	26
		◇ Karven Dry Gin, 40.8% <i>manuka flower, lemon, orange</i>	24
		ROMANIA	
		Wembley London Dry Gin, 40% <i>coriander, orange, star anise</i>	20

SCOTLAND			
◇ Alexander's Gin, 44.4%	28		
<i>honey, orange, juniper</i>			
◇ Boë Gin, 41.5%	26		
<i>grains of paradise, orange peel, almond</i>			
◇ Daffy's Small Batch Premium Gin, 43.2%	26		
<i>lebanese mint, spanish lemon, cassia</i>			
◇ Edinburgh Christmas Gin, 43%	28		
<i>frankincense, myrrh, lavender</i>			
Gordon's London Dry Gin, 37.5%	18		
<i>ginger, angelica, orange peel</i>			
◇ Gordon's Traveller's Edition, 47%	22		
<i>ginger, angelica, orange peel</i>			
◇ Hrafn Thought & Memory Gin, 49%	30		
<i>mandarin, cardamom, cinnamon</i>			
◇ Kinrara Highland Gin Artist's Edition, 43%	28		
<i>orange, lemon, angelica</i>			
◇ LoneWolf Gin, 44%	24		
<i>pine needle, lemon peel, grapefruit peel</i>			
NB Gin, 42%	24		
<i>cardamom, grains of paradise, cassia</i>			
◇ Pickering's Gin, 42%	22		
<i>clove, lemon peel, lime peel</i>			
◇ Seven Crofts Gin, 43%	28		
<i>pink pepper, cubeb, lemon peel</i>			
Shetland Reel Simmer Gin, 49%	26		
<i>orange peel, liquorice, coriander</i>			
◇ Still River Naked Gin, 43%	28		
<i>grapefruit, cassia, coriander</i>			
SINGAPORE			
ATLAS London Dry Gin, 47%	20		
<i>chamomile, cassia, grapefruit peel</i>			
SOUTH AFRICA			
◇ Cape Town Classic Dry Gin, 43%	28		
<i>dried rhino bush, cardamom, cassia</i>			
Hope On Hopkins London Dry Gin, 43%	24		
<i>lemon verbena, coriander, rosemary</i>			
SPAIN			
◇ Botanic Premium London Dry Gin, 40%	26		
<i>cedar, buddha's hand, mango</i>			
◇ Bruni Collin's Gin, 42.8%	24		
<i>tangerine, kaffir lime, vanilla</i>			
◇ Master's Gin, 40%	22		
<i>cardamom, bitter orange peel, sweet orange peel</i>			
◇ Modernessia Gin, 40%	28		
<i>distilled honey, chamomile, lemon verbena</i>			
USA			
◇ Aria Portland Dry Gin, 45%	28		
<i>cubeb, orris root, cassia</i>			
Barton Gin, 40%	26		
<i>fennel seed, anise, lemon peel</i>			
		Bluecoat Dry Gin, 47%	22
		<i>orange peel, bitter orange peel, chamomile</i>	
		◇ Cardinal American Gin, 42%	26
		<i>coriander, apricot pit, clove</i>	
		◇ Liberty Gin, 45%	26
		<i>angelica, grains of paradise, lemon peel</i>	
		◇ No. 209 Whitechapel Victorian Dry Gin, 45%	28
		<i>walnut, lemon verbena, juniper</i>	
		◇ Swallowtail London Dry Gin, 45%	22
		<i>orange peel, grapefruit peel, cassia</i>	
		◇ Warwick Gin, 40%	22
		<i>angelica, cardamom, lemon peel</i>	
		WALES	
		◇ Brecon Gin, 40%	26
		<i>lemon peel, orange peel, cinnamon</i>	
		<div style="border: 1px solid black; padding: 5px; margin: 10px auto; width: fit-content;"> <p style="margin: 0;">FLORAL BOUQUET, PERFUMED BLOOMS, PETALS</p> </div>	
		◇ Mont-Saint-Jean Waterloo Gin, 42%	30
		<i>lavender, lemon peel, aniseed</i>	
		ENGLAND	
		◇ Adnam's Copper House Dry Gin, 40%	24
		<i>hibiscus, cardamom, orange peel</i>	
		◇ Adnam's First Rate Copper Gin, 48%	26
		<i>vanilla pod, fennel seed, thyme</i>	
		◇ Bishop's Gin, 40.7%	32
		<i>nasturtium, lemongrass, lemon</i>	
		Bloom London Dry Gin, 40%	22
		<i>chamomile, pomelo, honeysuckle</i>	
		◇ Bombay Laverstoke Mill Limited Edition, 49%	68
		<i>almond, lemon peel, liquorice</i>	
		Bombay Sapphire Gin, 40%	20
		<i>almond, lemon peel, liquorice</i>	
		Bombay Star of Bombay Gin, 47.5%	24
		<i>ambrette seed, bergamot, lemon peel</i>	
		Burleighs Distiller's Cut Gin, 47%	28
		<i>silver birch, dandelion, elderberry</i>	
		◇ Ealing Gin, 42%	28
		<i>chamomile, scented rose, mint</i>	
		◇ Gin Lane 1751 London Dry Gin, 40%	26
		<i>star anise, coriander, bitters</i>	
		◇ Hidden Curiosities Gin, 42%	30
		<i>yuzu, pink pepper, lavender</i>	
		◇ Knockeen Hills Heather Gin, 47.3%	24
		<i>heather, angelica, savory</i>	
		◇ Liverpool Complex Organic Gin, 43%	28
		<i>coriander, cardamom, cassia</i>	
		◇ Mayfair Dry Gin, 40%	26
		<i>angelica, coriander, orris powder</i>	
		◇ Military Spirit Gin, 43%	26
		<i>lime flower, gorse, heather</i>	

LONDON DRY - FLORAL . HERBAL

◊ Neat Gin, 40%	28	◊ Gorse Gin, 43.1%	26
<i>cardamom, angelica, cassis</i>		<i>gorse, elderflower, chamomile</i>	
◊ Stratford Gin, 45%	36	◊ Hills & Harbour Gin, 40%	26
<i>rose, lemon balm, lovage</i>		<i>seaweed, noble fir, mango</i>	
◊ Swordsman London Dry Gin, 40%	22	◊ Inshriach Original Gin, 43%	26
<i>coriander, savory, angelica</i>		<i>douglas fir, rosehip, juniper</i>	
◊ Ten Tor Seasonal Spring Gin, 42%	28	◊ Kintyre Gin, 43%	26
<i>hyssop, star anise, scots pine needle</i>		<i>lemon peel, bitter orange, sorrel</i>	
◊ That Boutique-y Monastic Gin, 40%	28	◊ Kirkjuvagr Orkney Gin, 43%	26
<i>quince, rosehip, coriander</i>		<i>ramanas rose, borage flower, angelica</i>	
◊ The Corinthian London Dry Gin, 40%	24	◊ Lussa Gin, 42%	34
<i>lemon balm, cubeb, lime flower</i>		<i>sea lettuce, pine, water mint</i>	
◊ The Lakes Explorer Edition Gin, 47.1%	26	◊ Rock Rose Gin, 41.5%	22
<i>bilberry, heather, meadowsweet</i>		<i>hodiola rose, rowanberry, sea buckthorn</i>	
◊ Wardington's Ludlow Dry Gin, 42%	26	◊ Rock Rose Winter Gin, 41.5%	24
<i>gorse, lemon peel, orange peel</i>		<i>spruce tips, rhodiola rose, juniper</i>	
◊ Willem Barentsz Premium Gin, 43%	24	Shetland Reel Ocean Sent Gin, 49%	24
<i>jasmine, coriander, liquorice</i>		<i>seaweed, coriander, apple mint</i>	
GERMANY		Tanqueray Gin, 43.1%	20
Monkey 47 Gin, 47%	26	<i>liquorice, angelica, coriander</i>	
<i>pomelo, lemon balm, jasmine</i>		The Botanist Gin, 46%	22
◊ Niemand Dry Gin, 46%	32	<i>mugwort, meadowsweet, lady's bedstraw flower</i>	
<i>rosemary, sandalwood, vanilla</i>		SPAIN	
◊ Triple Peak London Dry Gin, 44%	32	◊ No. 0 London Dry Gin, 40.8%	22
<i>elderberry, sea buckthorn, rosehip</i>		<i>cinchona bark, cinnamon, iris</i>	
GREECE		◊ Siderit Hibiscus Gin, 43%	36
Old Sport Gin, 42%	20	<i>hibiscus, mountain ironwort, pink pepper</i>	
<i>mastic, bitter orange peel, cinnamon</i>		USA	
IRELAND		Greenhook Ginsmiths Gin, 47%	24
◊ Ha'Penny Gin, 41%	28	<i>elderflower, cinnamon, chamomile</i>	
<i>rhubarb, lavender, dandelion</i>		WALES	
◊ The Exiles Irish Gin, 41.3%	26	◊ Eccentric London Dry Gin, 42%	26
<i>shamrock, lemon zest, black pepper</i>		<i>meadowsweet, liquorice, lemon peel</i>	
NETHERLANDS			
◊ Driftwood Donkey Jack Gin, 45%	30		
<i>angelica, sweet orange peel, lemon zest</i>			
◊ Nolet's Silver Dry Gin, 47.6%	30		
<i>rose, white peach, orris</i>			
NEW ZEALAND			
◊ Reid + Reid Rev Dawson's Gin, 42%	26		
<i>fresh orange peel, fennel seed, liquorice</i>			
SCOTLAND			
◊ Blackwoods 2012 Vintage 40% Gin, 40%	28		
<i>wild water mint, sea pink, angelica</i>			
◊ Crossbill Small Batch Highland Dry Gin, 43.8%	28		
<i>rosehip, juniper</i>			
◊ Darnley's View Gin, 40%	24		
<i>elderflower, lemon peel, coriander</i>			
◊ Fidra Gin, 42%	28		
<i>rosehip, sea buckthorn, lemon thyme</i>			

HERBAL

FRESH BUNCH, DRIED LEAVES, VEGETAL

AUSTRALIA

Archie Rose Signature Dry Gin, 42%	24
<i>pepperleaf, river mint, lemon myrtle</i>	
◊ Kis O Gin, 43.5%	34
<i>wild rosemary, angelica, coriander</i>	
◊ Loch Distillery Small Batch Gin, 41%	22
<i>star anise, nutmeg, ginger</i>	
BELGIUM	
◊ Cockney's Gin, 44.2%	28
<i>grapefruit, grains of paradise, coriander</i>	
CROATIA	
◊ Old Pilots Gin, 45%	38
<i>olive leaf, sage, bitter orange peel</i>	

ENGLAND			
	7 Dials London Dry Gin, 46%	26	
	<i>coriander, lavender, almond</i>		
◇	Anno Kent Dry Gin, 43%	26	
	<i>lavender, lemon peel, black pepper</i>		
◇	Berkeley Square Gin, 46%	46	
	<i>basil, lavender, kaffir lime leaf</i>		
	Bombay Original Dry Gin, 37.5%	20	
	<i>angelica, liquorice, lemon peel</i>		
	Bombay Sapphire East Gin, 42%	26	
	<i>black pepper, lemongrass, almond</i>		
	Boodles British Gin, 40%	22	
	<i>nutmeg, rosemary, sage</i>		
◇	Brighton Gin, 40%	26	
	<i>angelica, lime peel, milk thistle</i>		
◇	Burleighs Leicester Dry Gin, 40%	30	
	<i>thyme, sage, nutmeg</i>		
◇	Cambridge Dry Gin, 42%	26	
	<i>lemon verbena, rose petal, basil</i>		
◇	Chilgrove Dry Gin, 44%	24	
	<i>mint, savory, fresh lime</i>		
◇	City of London Christopher Wren Gin No.2, 45.3%	28	
	<i>liquorice, angelica, nutmeg</i>		
◇	City of London Square Mile Gin, 47.3%	28	
	<i>lemon peel, orange peel, grapefruit peel</i>		
◇	Conker Spirits Dorset Dry Gin, 40%	28	
	<i>elderberry, lime peel, gorse flower</i>		
◇	Cooper King Valour Dry Gin, 40%	26	
	<i>lemongrass, basil, honey</i>		
◇	Dockyard Gin, 41.2%	30	
	<i>elderflower, orris root, grains of paradise</i>		
	East London Liquor Co. Batch No. 2 Gin, 47%	24	
	<i>bay leaf, thyme, fennel seed</i>		
	Fishers Gin, 44%	28	
	<i>spignel, bog myrtle, rock samphire</i>		
◇	Four Feathers London Dry Gin, 40%	24	
	<i>basil, thyme, gorse flower</i>		
	Kew Organic Gin, 46%	24	
	<i>galangal, passion flower, lavender</i>		
◇	Masons Dry Yorkshire Lavender Edition Gin, 42%	24	
	<i>lavender, fennel seed, fresh lime peel</i>		
◇	MEWS Gin, 38%	22	
	<i>pink pepper, cassia, lavender</i>		
	Mombasa Club Colonel's Reserve Gin, 43.5%	26	
	<i>caraway seed, clove, cumin</i>		
	Mombasa Club Gin, 41.5%	22	
	<i>angelica, clove, cumin</i>		
	Pothecary Gin, 44.8%	30	
	<i>lavender, tilia flower, lemon peel</i>		
◇	Plymouth Old Presentation Bottle Gin, 41.2%	26	
	<i>liquorice, angelica, sweet orange peel</i>		
◇	Renegade Gin, 42%	24	
	<i>grains of paradise, cardamom, angelica</i>		
◇	Tarquins Handcrafted Cornish Gin, 42%	24	
	<i>violets, orange zest, angelica</i>		
◇	That Boutique-y Botanical Democracy Gin, 46.2%	34	
	<i>lime, fennel seed, coriander</i>		
◇	The Distillery King Theodore of Corsica Gin, 42%	32	
	<i>bergamot, basil, sea salt</i>		
◇	The Distillery MOS Blend Gin, 40%	30	
	<i>wormwood, fennel seed, grains of paradise</i>		
◇	The Distillery Super Dry Gin, 42%	32	
	<i>gentian root, rooibos, lemon peel</i>		
◇	The Original Barber's Gin, 40%	24	
	<i>coriander, thyme, angelica</i>		
◇	The Whitby Gin, 42%	24	
	<i>sugar kelp, moors honey, coriander</i>		
◇	Thomas Dakin Gin, 42%	24	
	<i>horseradish, sweet orange peel, cubeb</i>		
◇	Thunderflower Gin, 42%	26	
	<i>sage, elderflower, liquorice</i>		
◇	Twisting Spirits Earl Grey Gin, 41.5%	26	
	<i>earl grey, cardamom, cubeb</i>		
◇	Woodhill Gin, 41.7%	42	
	<i>pink pepper, lemongrass, rosebud</i>		
FRANCE			
◇	BR Essential London Dry Gin, 40%	36	
	<i>allspice, thyme, jamaican pepper</i>		
GERMANY			
◇	Diamond London Dry Gin, 45%	22	
	<i>juniper</i>		
◇	Lebensstern London Dry Gin, 43%	24	
	<i>black pepper, orange zest, elderflower</i>		
◇	The Duke Rough Gin, 42%	26	
	<i>coriander, orange peel, hops</i>		
IRELAND			
◇	An Dulaman Irish Martime Gin, 43.2%	28	
	<i>sugar kelp, moss, dulce seaweed</i>		
	Glendalough Wild Botanical Gin, 41%	28	
	<i>liquorice, elderflower, watermint</i>		
ITALY			
◇	Berto Distilled Dry Gin, 43%	24	
	<i>wormwood, rosemary, iris</i>		
	Luxardo London Dry Gin, 43%	20	
	<i>cinchona, bitter orange, iris</i>		
	Sabatini Gin, 41.3%	24	
	<i>thyme, sage, lavender</i>		
	Vallombrosa Gin, 47%	22	
	<i>juniper</i>		
◇	VII Hills Gin, 43%	26	
	<i>pomegranate, rosehip, celery</i>		
◇	Winestillery London Dry Gin, 42%	30	
	<i>menthol, lemon peel, orange peel</i>		

LONDON DRY - HERBAL . SPICED

NETHERLANDS

- ◇ Feller Gin, 40% 26
blood orange peel, juniper, coriander
- ◇ Sloane's Dry Gin, 40% 22
vanilla, liquorice, orris
- ◇ V2C Dutch Dry Gin, 41.5% 26
laurel, st. john's wort, angelica

NORWAY

- ◇ Vidda Tørr Gin, 43% 26
heather, yarrow, chamomile

SCOTLAND

- ◇ Achroous Gin, 41% 28
sichuan pepper, fennel seed, coriander
- ◇ Avva Scottish Gin, 43% 28
red clover, lime peel, mint
- ◇ Edinburgh Seaside Gin, 43% 26
scurvy grass, ground ivy, cardamom
- ◇ Gilt Gin, 40% 30
liquorice, cardamom, orris root
- ◇ Ginerosity Gin, 40% 28
heather, clove, cinnamon
- ◇ King's Hill Gin, 44% 26
liquorice, elderflower, gorse
- ◇ Lin Gin, 43% 26
meadowsweet, lemon peel, heather
- ◇ Persie Herby & Aromatic Gin, 40% 24
rosemary, basil, green olive
- ◇ Pickering's Original 1947 Gin, 42% 22
fennel seed, anise, clove
- ◇ Rock Rose Mey Selections Gin, 41.5% 26
applemint, rowanberry, sweet cicely
- ◇ Sea Glass Gin, 43% 24
liquorice, sweet cicely, applemint
- ◇ Stirling Gin, 43% 22
basil, nettle, orange peel
- ◇ Tanqueray Bloomsbury Gin, 47.3% 28
coriander, liquorice, winter savory
- ◇ Tanqueray Lovage Gin, 47% 30
lovage, liquorice, angelica

SOUTH AFRICA

- ◇ Stretton's London Dry Gin, 43% 22
sugar cane, angelica, juniper

SPAIN

- ◇ 5th Air Black Gin, 40% 28
algae, juniper, coriander
- ◇ Macaronesian White Gin, 40% 24
cardamom, orange peel, liquorice
- ◇ NUT London Dry Gin, 45% 22
thyme, green walnut, olive leaf
- ◇ Platinum TV Gin, 43% 22
bitter almond, cassia, ginger

- ◇ Siderit London Dry Gin, 43% 36
rock tea, hibiscus, pink pepper
- ◇ The Botanical's Premium London Dry Gin, 42.5% 28
mango, buddha's hand, thyme

SWITZERLAND

- ◇ Bonifaz Dry Gin, 41% 38
juniper
- ◇ Gin 27 Premium Appenzeller Dry Gin, 43% 28
coriander, orange peel, cardamom

USA

- ◇ Death's Door Gin, 47% 28
fennel seed, coriander, juniper
- ◇ New Deal 33 Gin, 46% 22
juniper, coriander, cardamom
- ◇ Vim & Petal Gin, 42% 22
grapefruit, bergamot, tarragon

WALES

- ◇ Da Mhile Farmhouse Botanical Organic Gin, 42% 24
rose, fennel seed, star anise



AUSTRALIA

- ◇ Moore's Australian Dry Gin, 40% 22
cinnamon myrtle, macadamia nut, illawarra plum

AUSTRIA

- ◇ Farthofer Organic Premium Gin, 40% 24
javanese pepper, orange rind, lavender

BELGIUM

- ◇ Biercée Thesis & Antithesis Gin, 44% 38
hops, poppy, cocoa
- ◇ Filliers Pine Blossom Dry Gin 28, 43.7% 36
pine blossom, juniper, vanilla

ENGLAND

- ◇ Batch Premium Gin, 40% 28
frankincense, myrrh, allspice
- ◇ Bimber London Dry Gin, 42% 36
cinnamon, nutmeg, coriander
- ◇ Bulldog Gin, 40% 22
dragon eye, poppy, lotus leaves
- ◇ Cotswolds Gin, 46% 24
black pepper, lavender, grapefruit zest
- ◇ Fifty Eight Gin, 43% 26
vanilla, pink grapefruit, bergamot
- ◇ GOA Gin, 47% 26
caraway, cardamom, nutmeg
- ◇ Juniper Green Trophy Gin, 43% 22
summer savory, angelica root, coriander
- ◇ Opihr Oriental Spiced Gin, 40% 24
cardamom, grapefruit peel, cubeb

◇ Salcombe Start Point Gin, 44%	26		
<i>cubeb berry, lime peel, fresh grapefruit</i>			
◇ Speakeasy Turkey Trot Gin, 44%	26		
<i>raisins, cinnamon, clove</i>			
◇ St. Giles Gin, 42%	30		
<i>lemongrass, black pepper, pink pepper</i>			
◇ The East India Company London Dry Gin, 42%	26		
<i>galangal, sweet orange peel, cardamom</i>			
◇ The Gin Kitchen Gutsy Monkey Winter Gin, 48%	28		
<i>black pepper, allspice, ginger</i>			
◇ Warner Edwards Harrington Dry Gin, 44%	26		
<i>green cardamom, black pepper, cinnamon</i>			
◇ Whittaker's Gin, 42%	22		
<i>thyme, bog myrtle, coriander</i>			
FRANCE			
◇ Jin Dea Gin, 40%	26		
<i>darjeeling, cardamom, ginger</i>			
◇ Magellan Gin, 41.3%	28		
<i>iris flower, clove, cinnamon</i>			
GERMANY			
Elephant Gin, 45%	24		
<i>pimento berries, devil's claw, buchu</i>			
◇ Goldberner Gin, 45%	30		
<i>cardamom, angelica, bitter orange peel</i>			
◇ Luum London Dry Gin, 40%	30		
<i>almond, coriander, angelica</i>			
NETHERLANDS			
◇ Driftwood Chow Hound Gin, 44%	28		
<i>cinnamon, cardamom, nutmeg</i>			
◇ Sylvius Gin, 45%	24		
<i>star anise, cinnamon, caraway</i>			
NEW ZEALAND			
Scapegrace Dry Gin, 42.2%	20		
<i>cinnamon, nutmeg, clove</i>			
SCOTLAND			
◇ Darnley's View Spiced Gin, 42.7%	26		
<i>ginger, cumin, clove</i>			
◇ Devil's Staircase Gin, 42%	26		
<i>nutmeg, coriander, cardamom</i>			
SPAIN			
◇ Jodhpur Gin, 43%	22		
<i>ginger, grapefruit peel, bitter almond</i>			
SRI LANKA			
Colombo No. 7 Gin, 43.1%	20		
<i>cinnamon, curry leaves, ginger</i>			
SINGAPORE			
Merlion Gin, 43%	20		
<i>grains of paradise, sarawak pepper, cassia</i>			
SWEDEN			
◇ ND Mountain Dry Gin, 43.5%	36		
<i>timut pepper, angelica, birch leaf</i>			
		USA	
		◇ J. Rieger Midwestern Dry Gin, 46.1%	22
		<i>coriander, liquorice, orange peel</i>	
		◇ Knickerbocker Gin, 42.5%	24
		<i>fennel seed, clove, nutmeg</i>	
		<div style="border: 1px solid black; padding: 5px; margin: 0 auto; width: 80%;"> <p style="text-align: center;">LUSCIOUS</p> <p style="text-align: center;">DELICATE, VELVETY SWEETENED, SCRUMPTIOUS</p> </div>	
		ENGLAND	
		◇ Maiden Maidstone Gin, 42%	24
		<i>marshmallow, meadowsweet, liquorice</i>	
		◇ Manchester Three Rivers Gin, 40%	22
		<i>oat, vanilla, cardamom</i>	
		◇ Sir Robin of Locksley Gin, 40.5%	24
		<i>pink grapefruit, dandelion, elderflower</i>	
		SCOTLAND	
		Caorunn Scottish Gin, 41.8%	22
		<i>coul blush apple, heather, dandelion</i>	
		◇ Eden Mill Original Gin, 42%	26
		<i>sea buckthorn, lemon balm, orange peel</i>	
		◇ Nerabus Islay Gin, 42%	26
		<i>heather, pink grapefruit, coriander</i>	
		◇ Rock Rose Spring Gin, 41.5%	24
		<i>coltsfoot, dandelion, gorse</i>	
		SWEDEN	
		◇ Hernö Dry Gin, 40.5%	30
		<i>lingonberry, meadowsweet, vanilla</i>	
		<div style="border: 1px solid black; padding: 5px; margin: 0 auto; width: 80%;"> <p style="text-align: center;">NUTTY</p> <p style="text-align: center;">RUSTIC, WOODY, SAVOURY EDGE</p> </div>	
		ENGLAND	
		East London Liquor Co. Batch No.1 Gin, 45%	24
		<i>cubeb, darjeeling, grapefruit peel</i>	
		◇ Greensand Ridge London Dry Gin, 40%	26
		<i>gorse, honey, cobnuts</i>	
		Langley's No. 8 Gin, 42%	20
		<i>nutmeg, sweet orange, cassia</i>	
		<div style="border: 1px solid black; padding: 5px; margin: 0 auto; width: 80%;"> <p style="text-align: center;">EARTHY</p> <p style="text-align: center;">DARK RICH SOIL, TURF, WET LEAVES</p> </div>	
		AUSTRALIA	
		◇ Blind Tiger Organic Gin, 42.7%	30
		<i>coriander, angelica, summer savory</i>	
		◇ Giniversity London Dry Gin, 40%	22
		<i>meen, coriander, orange peel</i>	
		Never Never Triple Juniper Gin, 43%	24
		<i>juniper, peppercorn, cinnamon</i>	
		◇ Patient Wolf Premium Dry Gin, 41.5%	36
		<i>fresh ruby grapefruit, tonka bean, cardamom</i>	

LONDON DRY - EARTHY . GRASSY

ENGLAND

- ◊ 1897 Quinine Gin, 45.8% 30
cinchona bark, lemon peel, grapefruit peel
- Burleighs Export Strength Gin, 47% 28
silver birch, dandelion, elderberry
- ◊ Caspyn Cornish Dry Gin, 40% 24
lemon verbena, japanese tea, hibiscus
- Cremorne Colonel Fox's Gin, 40% 22
liquorice, angelica, bitter orange peel
- ◊ Gilpin's Westmorland Extra Dry Gin, 47% 28
borage, sage, angelica
- ◊ Gin Lane 1751 Royal Strength Gin, 47% 26
cassia, star anise, sicilian lemon
- ◊ Ish Gin, 41% 24
almond, nutmeg, double juniper
- Cambridge Japanese Gin, 42% 32
shiso leaf, yuzu, sansho
- ◊ KURO Gin, 43% 26
silver birch bark, charcoal, spruce
- ◊ Langtons No 1 Gin, 40% 22
oak bark, lemon peel, orange peel
- Plymouth Gin, 41.2% 22
liquorice, angelica, sweet orange peel
- ◊ Two Birds London Dry Gin, 40% 24
orris root, juniper, coriander

FRANCE

- ◊ Diplome Gin, 44% 26
saffron, fennel seed, whole lemon

GERMANY

- ◊ Hoos London Gin, 44.4% 30
pine, fennel seed, cardamom
- ◊ Wild Child Gin, 43.5% 28
rosemary, lemon, bergamot

LITHUANIA

- ◊ Fox Gang Gin, 40% 22
dill seed, orange peel, juniper berry

NETHERLANDS

- ◊ Zuidam Dutch Courage Dry Gin, 44.5% 24
angelica, coriander, vanilla

SCOTLAND

- ◊ Colonsay Gin, 47% 32
calamus root, coriander, orange peel
- ◊ Esker Gin, 42% 28
silver birch sap, heather, nettle
- ◊ Granite North Gin, 41.9% 26
fir needles, lemon pith, pine
- ◊ Loch Ness Legends Gin, 43.3% 26
heather, hawthorn berry, silver birch sap
- ◊ Makar Glasgow Gin, 43% 22
black pepper, rosemary, coriander

- ◊ McQueen Signature Dry Gin, 42% 26
lime, coriander, cassia

WALES

- Brecon Botanicals Gin, 43% 24
orange peel, saffron, cinnamon



ENGLAND

- ◊ Beckett's London Dry Gin, 40% 28
mint, lime, sweet orange peel
- ◊ Elemental Cornish Gin, 42% 26
orris root, cassia, coriander
- ◊ Faith & Sons Gin, 42.2% 32
lemon verbena, liquorice, mandarin peel
- ◊ Forest (Bond) Gin, 42% 32
moss, liquorice, cinnamon
- ◊ Hedgerow Gin, 42% 26
meadow hay, crab apple, nettle
- ◊ Poetic License Northern Dry Gin, 43.2% 24
cardamom, cubeb, dried lime
- ◊ Ten Tor Seasonal Autumn Gin, 42% 28
rosehip, hawthorn berry, blackberry
- ◊ Twisting Spirits Douglas-Fir Gin, 41.5% 26
douglas fir needles, cardamom, sarsaparilla root

GERMANY

- Skin Gin Christmas Blue 2017, 42% 32
grapefruit peel, coriander, mint
- Woodland Sauerland Dry Gin, 45.3% 26
sorrel, dandelion root, spruce tips

NETHERLANDS

- Black Tomato Gin, 42.3% 26
black tomato, salt, citrus

NEW ZEALAND

- Denzien Te Aro Dry Gin, 42% 30
horopito, fennel, kawakawa

SOUTH AFRICA

- A Mari Atlantic Ocean Gin, 43% 38
allspice, fynbos, tangerine

SPAIN

- ◊ Ginraw Gin, 42.3% 26
kaffir lime leaf, laurel, bay leaf

USA

- ◊ Greylock Gin, 40% 22
cinnamon, orange peel, angelica

WALES

- ◊ Pollination Gin, 45% 28
gorse, heather, hawthorn

BERRIES

PLUMP, ROUNDNESS, JAMMY

ENGLAND

- ◇ Stonewall London Dry Gin , 40% 26
sea buckthorn, almond, blueberry

SPAIN

- ◇ 5th Fire Red Fruits Gin, 42% 28
blueberry, raspberry, blackberry

FRUITY

EXOTIC, AUDACIOUS, NOT FRUIT FLAVOURED

ENGLAND

- ◇ Juni 93 London Dry Gin, 42.5% 26
cornelian cherry, elderberry, lime peel
- ◇ Oxley Gin, 47% 26
lemon zest, orange zest, grapefruit zest

SCOTLAND

- ◇ Caithness Highland Gin, 40% 26
orange peel, lime peel, rhubarb
- ◇ Eenoo Gin, 43% 26
honey, heather, raspberry
- ◇ Kinrara Highland Dry Gin, 41.5% 26
rosehip, rowanberry, orange peel

MODERN

We define (loosely, admittedly) modern gin as one that doesn't fit the juniper-forward London Dry Gin style. Gins that celebrate or highlight an abundance of botanicals, or have an emphasis on fruit or spice, or gins that champion location or technique.

CITRUS

BRIGHT, ZINGY, REFRESHING

AUSTRALIA

- ◇ 1832 Wolgan Gin, 40% 36
finger lime, lemon-scented tea tree, liquorice
- ◇ Antipodes Gin, 45% 34
sweet orange peel, lemon oil, pepperberry
- Archie Rose Bone Dry Gin, 44% 26
lemon gum, finger lime, coriander seed
- ◇ Bass & Flinders Soft and Smooth Gin, 40% 34
lime zest, coriander, pepperberry
- ◇ Fossey's Original Gin Elixir, 40% 36
tangelo, lemon myrtle, bergamot
- Four Pillars Rare Dry Gin, 41.8% 20
lemon myrtle, pepperberry leaf, fresh orange
- ◇ Four Pillars X Hernö Gin, 42.8% 28
rivermint, spearmint, strawberry gum
- ◇ Gallivanter Wild Botanical Gin, 42% 22
pepper, cinnamon myrtle, ruby grapefruit
- ◇ Giniversity Botanical Gin, 42% 24
sandalwood, eucalyptus, lemon myrtle
- ◇ Great Southern Dry Gin, 40% 26
meen, cinnamon, fresh lemon
- ◇ Honcho Gin, 40% 26
lemon, lime, juniper
- ◇ Hurdle Creek Still Yardarm Gin, 42% 36
lemon myrtle, pink pepper, hop flower
- ◇ Manly Spirits Coastal Citrus, 43% 28
lemon aspen, meyer lemon, sea parsley
- ◇ Noosa Heads Fortune Signature Gin, 41% 32
lemon peel, honeydew, green tea
- Old Young's 1829 Gin, 45% 24
liquorice, lemon myrtle, aniseed
- Prohibition Gin, 42% 24
lavender, pink pepper, blood orange
- Seven Zero Eight Gin, 43% 24
thyme, cardamom, finger lime
- ◇ Tamborine Mountain Distillery Lilly Pilly Gin, 40% 24
riberry, anise, orange peel

- West Winds Sabre Gin, 40% 22
wattleseed, lemon peel, lemon myrtle

BELGIUM

- ◇ Copperhead Gin, 40% 26
coriander, orange peel, cardamom
- Forest Dry Winter Gin, 42% 24
cinnamon, grapefruit peel, angelica
- ◇ Lindemans Premium Distilled Gin, 40% 34
cherry stone, cardamom, tailed pepper
- ◇ Ph. Collet's London Dry Gin, 46% 32
sweet orange peel, angelica, rosemary
- ◇ Uppercut Dry Gin, 49.6% 34
damiana leaf, strawberry leaf, liquorice

BRAZIL

- Amázzoni Gin, 42% 26
cacao, brazilian chestnut, water lily
- Amázzoni Rio Negro Gin, 42% 28
victoria regia, tangerine, brazil nut

ENGLAND

- Cambridge Three Seasons Gin, 45% 36
lemon verbena, rose, blackcurrent leaf
- Chase Seville Marmalade Gin, 40% 22
elderflower, bitter almond, liquorice
- ◇ Ish Limao Gin, 40% 24
lime oil, orange peel, lemon peel
- ◇ Jensen's Bermondsey Gin, 43% 22
almond, liquorice, angelica
- ◇ Lemon Grove Gin, 40% 24
fresh lemon, nutmeg, cassia
- ◇ Liverpool Small Batch Valencian Orange Gin, 46% 26
valencia orange, orange peel, liquorice
- Martin Miller's Gin, 40% 22
lemon peel, lime oil, juniper
- ◇ Mermaids Gin, 42% 28
rock samphire, hops, grains of paradise
- ◇ Nelson's Gin, 42.5% 26
lemongrass, kaffir lime, vanilla
- ◇ Silverback Mountain Strength Gin, 46% 36
sweet orange peel, acacia blossom, lemongrass

◇ Steampunk Pirate Rascal Strength Gin, 45%	38	◇ Okinawa Gin Recipe 01, 47%	26
<i>grapefruit zest, star anise, orange</i>		<i>guava leaf, goya, roselle</i>	
That Boutique-y Moonshot Gin, 46.6%	34	Sakurao Original Gin, 47%	24
<i>moonrock, bitter orange peel, chamomile flower</i>		<i>dai dai, hinoki, shiso</i>	
◇ That Boutique-y World Gin Day Gin, 47.7%	34	◇ Tokyo Nights Japanese Gin, 43%	26
<i>sea salt, coriander, angelica</i>		<i>yuzu, matcha, coriander</i>	
◇ The Lakes Pink Grapefruit Gin, 46%	24	Ukiyo Japanese Yuzu Gin, 40%	22
<i>bitter orange, sweet orange, orris</i>		<i>shochu, yuzu, mandarin</i>	
◇ Worship Street Whistling Shop Cream Gin, 43.8%	26	Wa Bi Gin, 47%	24
<i>cream, lemon zest, coriander</i>		<i>kumquat, shell ginger, saigon cinnamon leaf</i>	
ESTONIA		MEXICO	
◇ Crafter's London Dry Gin, 43%	28	◇ Condesa Prickly Pear & Orange Blossom Gin, 43%	25
<i>veronica, lemon peel, orange peel</i>		<i>prickly pear, orange blossom, raspberry</i>	
FRANCE		NETHERLANDS	
Citadelle Original Gin, 44%	22	Damrak Amsterdam Original Gin, 41.8%	20
<i>cardamom, orange peel, violet</i>		<i>aniseed, cinnamon, honeysuckle</i>	
◇ G.W Goodwynn Co. Classic Gin, 40%	23	◇ Hermit Gin, 43%	38
<i>cucumber, rose, coriander</i>		<i>coriander, nutmeg, lemon zest</i>	
Le Gin de Christian Drouin Gin, 42%	22	◇ Skully London Dry Gin, 41.8%	24
<i>vanilla, almond, rose</i>		<i>orris, vanilla, citrus</i>	
Melifera Gin, 43%	24	◇ Skully Tangerine Twist Gin, 41.8%	24
<i>immortelle, maceron, cardamom</i>		<i>chinese mandarin, sweet orange, bitter orange</i>	
Melifera Gin (Edizione Corsa), 43%	28	NEW ZEALAND	
<i>immortelle, maceron, myrtle</i>		◇ Curiosity Recipe 23 Gin, 42%	30
GERMANY		<i>manuka, orange zest, lavender</i>	
◇ Clocker's Gin, 44%	28	◇ Vaione Pacific Gin, 40.2%	22
<i>orange peel, lemon peel, coriander</i>		<i>fresh lime, fresh navel orange, green cardamom</i>	
◇ Clockers 3-a-gin St. Pauli Gin, 44%	42	PERU	
<i>bergamot, mandarin orange, quince</i>		GIN'CA Gin, 40%	24
◇ Friedrichs Dry Gin, 45%	26	<i>marigold, lemon verbena, tangelo</i>	
<i>rosemary, apple, jasmine</i>		PHILIPPINES	
IRELAND		ARC Botanical Gin, 45%	22
◇ Drumshanbo Californian Orange Citrus Gin, 43%	22	<i>dalandan orange, pomelo, ylang-ylang</i>	
<i>orange, vanilla, coriander</i>		Crows Gin, 45%	26
◇ Silver Spear Gin, 40%	26	<i>labuyo chilli pepper, pandan leaf, calamansi</i>	
<i>fresh lime, coriander, cassia</i>		PORTUGAL	
ITALY		◇ Sharish Dark Sky Gin, 40%	36
◇ Boigin Distilled Gin, 40%	30	<i>lemon verbena, vanilla, coriander</i>	
<i>everlasting flower, tangerine peel, orange peel</i>		◇ Will's Premium Gin, 40%	28
Bottega Bacur Gin, 40%	22	<i>lemon verbena, blackberry, elderflower</i>	
<i>sage, myrtle, lemon zest</i>		SCOTLAND	
Malfy Gin, 41%	22	◇ GlenWyvis Limited Edition Gin, 40%	28
<i>orange peel, cassia, liquorice</i>		<i>orange, hawthorn, lemon</i>	
Malfy Con Limone, 41%	22	◇ McQueen Sweet Citrus Gin, 42%	26
<i>amalfi lemon, sicilian lemon, grapefruit</i>		<i>lemongrass, kaffir lime, grapefruit</i>	
JAPAN		◇ Misty Isle Gin, 41.5%	26
◇ Etsu Pacific Ocean Gin, 45%	30	<i>black pepper, cassia, lemon peel</i>	
<i>bitter orange, angelica, coriander</i>		Porter's Gin, 41.5%	22
◇ Etsu Double Yuzu Gin, 43%	22	<i>pink pepper, buddha's hand, cinnamon</i>	
<i>yuzu, matcha, angelica</i>		◇ Shetland Reel Holly Days Gin, 43%	26
		<i>apple mint, orange peel, lemon peel</i>	

MODERN - CITRUS

Tanqueray No. TEN Gin, 47.3%	24	◇ Bogart's Gin, 45%	26
<i>fresh grapefruit, fresh orange, fresh lime</i>		<i>macadamia, lavender, lime zest</i>	
Tanqueray Rangpur Gin, 41.3%	24	◇ Botanica Spiritvs Gin, 45%	24
<i>rangpur lime, angelica, liquorice</i>		<i>meyer lemon, cucumber, bergamot</i>	
◇ The Gael Signature Scottish Gin, 40%	26	◇ Brandon's Rock Town Gin, 46%	24
<i>heather, lemon peel, cardamom</i>		<i>anise, orange peel, angelica</i>	
SINGAPORE		◇ Conniption Gin, 44%	26
Brass Lion Gin, 40%	24	<i>cucumber, honeysuckle flower, fig</i>	
<i>torch ginger flower, lemongrass, tamarind</i>		Corsair Steampunk Gin, 45%	26
Lime Garden Gin, 43%	20	<i>smoked grain, hops, orange</i>	
<i>key lime, calamansi, lime</i>		◇ Counter Gin, 40%	22
SOUTH AFRICA		<i>tarragon, verbena, meyer lemon</i>	
◇ Distillery Road Gin, 43%	22	◇ DH Krahn Gin, 40%	28
<i>lime, ginger, fynbos</i>		<i>galangal, grapefruit, coriander</i>	
Hope on Hopkins African Botanical Gin, 43%	26	◇ Ebb + Flow Gin, 47%	24
<i>buchu, kapokbos, citrus peel</i>		<i>elderflower, orange peel, angelica</i>	
◇ Jorgensen's Distillery Original Gin, 43%	26	◇ Harvard Avenue Gin, 45%	26
<i>wild ginger, bitter apricot, calamus root</i>		<i>rosehip, lemon peel, grains of paradise</i>	
◇ Stretton's Double Cut Gin, 43%	22	◇ Joseph Magnus Vigilant District Dry Gin, 42%	22
<i>coriander, angelica, cassia</i>		<i>hand foraged juniper, sesame, tarragon</i>	
◇ The General's Gin, 43%	32	◇ Journeyman Bilberry Black Hearts Gin, 45%	24
<i>buchu, vanilla, pine needles</i>		<i>bilberry, anise, orris root</i>	
SOUTH KOREA		◇ Juniper Jones Gin, 48.5%	24
◇ Zest Summer Gin, 38%	38	<i>dill, cucumber, cacao</i>	
<i>lemon verbena, yellow melon, mentha</i>		◇ Leopold's American Gin, 40%	26
SPAIN		<i>pomelo, orris root, orange zest</i>	
◇ Gin Eva, 45%	28	◇ New Amsterdam Straight Gin, 40%	22
<i>cardamom, bitter orange peel, lemon peel</i>		<i>vanilla, star anise, lime</i>	
◇ Kinross Citric & Dry Gin, 40%	22	Pinckney Bend Handcrafted American Gin, 47%	24
<i>lemon, grapefruit, mandarin</i>		<i>lavender, liquorice, cardamom</i>	
◇ Le Tribute Gin, 43%	26	◇ Seagram's Extra Dry Gin, 40%	24
<i>kumquat, lemongrass, grapefruit</i>		<i>grapefruit zest, fresh lime, texas pecan</i>	
◇ Palma Gin, 46.6%	24	◇ Seersucker Southern Style Gin, 42%	26
<i>almond flower, lavender, orange leaf</i>		<i>orange peel, mint, honey</i>	
◇ Voortrekker The Pioneer's Gin, 40%	24	◇ Small's Gin, 43%	24
<i>vanilla, ginger, liquorice</i>		<i>raspberry, orange, lemon</i>	
SWEDEN		◇ Smooth Ambler Greenbrier Gin, 40%	26
◇ ND Excurison Grapefruit Gin, 45%	50	<i>orange peel, coriander, black pepper</i>	
<i>grapefruit, orange, timut pepper</i>		◇ Spirit Works Distillery Gin, 43%	26
◇ ImaGin, 40%	22	<i>fresh orange, lemon zest, cardamom</i>	
<i>juniper, orange, lime</i>		◇ St. Augustine New World Gin, 47%	24
◇ Strane London Dry Merchant Strength Gin, 47.4%	36	<i>lemon zest, hibiscus, orange zest</i>	
<i>garden mint, sage, basil</i>		St. George ATLAS Orange Gin, 45%	22
◇ Wannborga Ö Gin, 40.1%	28	<i>orange blossom, dill, cucumber</i>	
<i>white pepper, coriander, juniper</i>		Tinkerman's Citrus Supreme, 46%	20
USA		<i>spanish orange, vanilla bean, elderflower</i>	
◇ Amass Dry Gin, 45%	24	◇ Wire Works American Gin, 45%	24
<i>hibiscus, cacao, lime leaf</i>		<i>lime zest, lemon, star anise</i>	
◇ Berkshire Mountain Ethereal Gin Batch 13 , 43%	26	VIETNAM	
<i>lime, lemon, orange</i>		Lady Trieu Sapa Citrus Tea Gin, 45%	22
◇ Blade Gin, 47%	32	<i>oolong, green tea, buddha's hand</i>	
<i>ginger, coriander, black pepper</i>			

FLORAL
BOUQUET, PERFUMED BLOOMS, PETALS

AUSTRALIA			
Canberra Distillery French Earl Grey Gin, 40%	24		
<i>ginseng, ginger, lemongrass</i>			
◇ Distillery Botanica Gin, 42%	34		
<i>chamomile, murraya, sage berggarten</i>			
Ink Dry Gin, 43%	26		
<i>pepperberry, lemon myrtle, sundried orange peel</i>			
Poor Toms Sydney Dry Gin, 41.3%	22		
<i>green apple, strawberry gum leaf, chamomile</i>			
Prohibition 100 Year Gin, 42%	32		
<i>honey, chardonnay grapes, saffron</i>			
◇ Seppeltsfield Distillers Barossa Dry, 41.6%	34		
<i>pink pepper, coriander, lavender</i>			
BELGIUM			
◇ Duin Gin, 43%	32		
<i>sea buckthorn berry, lavender, angelica</i>			
Forest Dry Spring Gin, 42%	24		
<i>juniper, rose petal, lemon peel</i>			
◇ Gin De Binche Gin, 40%	34		
<i>blood orange, hyssop, clove</i>			
◇ Musa Lova Gin, 41%	22		
<i>banana, rosemary, lavender</i>			
CAMBODIA			
Jason Kong Butterfly Gin, 41.3%	24		
<i>mondulkiri honey, rose apple, hibiscus</i>			
CANADA			
◇ Ampersand Distilling Co. Gin, 43.8%	26		
<i>angelica, coriander, orris root</i>			
◇ Doctor's Orders Gin, 40%	26		
<i>lavender, elderberry, apple</i>			
KM 12 Gin, 40%	24		
<i>lavender, cucumber, orris</i>			
◇ Noteworthy New Western Dry Gin, 43%	24		
<i>jasmine, lavender, orris root</i>			
◇ Sheringham Vancouver Island Kazuki Gin, 43%	24		
<i>japanese cherry blossom, yuzu, green tea</i>			
◇ Terminal City Gin, 42%	24		
<i>elderflower, chamomile, rosehip</i>			
◇ Unruly Gin, 43%	26		
<i>sarsaparilla, green cedar tips, lavender</i>			
DENMARK			
Kobenhavn Klassik Gin, 46%	22		
<i>elderberry, cinnamon, ginger</i>			
ENGLAND			
Ableforth's Bathtub Gin, 43.3%	28		
<i>cinnamon, clove, cardamom</i>			
◇ Adnam's Rising Sun Gin, 42%	24		
<i>matcha, lemongrass, ginger</i>			
◇ Bloom Jasmine & Rose Gin, 40%	24		
<i>elderflower, rose petal, honeysuckle</i>			
Brockmans Premium Gin, 40%	24		
<i>valencia orange peel, blackberry, coriander</i>			
◇ Buckingham Palace Dry Gin, 42%	30		
<i>lemon verbena, hawthorn berry, mulberry leaf</i>			
◇ Burleighs Pink London Dry Gin, 40%	22		
<i>sakura, pink grapefruit, hibiscus</i>			
Cambridge Three Seasons Gin, 45%	36		
<i>lemon verbena, summer rose, blackcurrant</i>			
◇ Edgerton Original Pink Gin, 43%	24		
<i>pomegranate, sweet orange peel, damiana</i>			
◇ Maiden Arwen's Flower Gin, 42%	24		
<i>rosehip, hibiscus, orange peel</i>			
◇ ORIGIN Arezzo - Italy Gin, 46%	24		
<i>juniper</i>			
◇ Sacred Juniper Gin, 40%	26		
<i>juniper</i>			
◇ Sheep's Eye Gin, 42%	24		
<i>hibiscus, liquorice, black pepper</i>			
◇ Shooters Gin, 42%	28		
<i>bilberry leaf, hibiscus, lemongrass</i>			
◇ Staffordshire Black Violet Gin, 40%	24		
<i>black cardamom, violet, cubeb</i>			
◇ Staffordshire Rose Gold Gin, 40%	22		
<i>saffron, rose petals, juniper</i>			
◇ Stonewall Pink Rhubarb Gin, 40%	26		
<i>rhubarb, sea buckthorn, blueberry</i>			
◇ Stovell's Wildcrafted Gin, 42%	26		
<i>bilberry, sweet flag, lovage</i>			
◇ That Boutique-y D.C. Gin, 40%	32		
<i>hops, tarragon, rosemary</i>			
The London No.1 Original Blue Gin, 47%	24		
<i>gardenia, bergamot, savory</i>			
◇ Tiger Premium Gin, 40%	26		
<i>liquorice, cinnamon, sweet lemon peel</i>			
◇ Toujours 21 Gin, 42%	30		
<i>lavender, angelica, lemon</i>			
◇ Ver Viola Gin, 40%	30		
<i>butterfly pea flower, rose, juniper</i>			
◇ Victory Cold Gin, 43.3%	24		
<i>black pepper, orris root, liquorice</i>			
◇ Wicked Wolf Exmoor Gin, 42%	24		
<i>orange peel, lemongrass, hibiscus</i>			
◇ Zephyr Blu Gin, 40%	22		
<i>elderberry, elderflower, gardenia flower</i>			
ESTONIA			
◇ Crafter's Aromatic Flower Gin, 44.3%	28		
<i>meadowsweet, rosehip, yuzu</i>			
FRANCE			
G'Vine Floraison Gin, 40%	20		
<i>fresh lime, cardamom, nutmeg</i>			

MODERN - FLORAL

- ◇ Gabriel Boudier Saffron Gin, 40% 22
saffron, orange peel, coriander
- Generous Gin, 44% 22
red pepper, jasmine, elderflower
- ◇ Gin Gold 999.9 Gin, 40% 32
poppy, gentian, violet flower
- Mirabeau Rosé Gin, 43% 22
jasmine, rose petal, lavender
- ◇ Oli'Gin L'olive Gin, 41% 28
olives, rosemary, violet
- ◇ Saint Maudez Gin, 44.7% 26
seaweed, angelica root, orange peel

GERMANY

- Feel! Munich Dry Gin, 47% 26
chokeberry, blueberry, lavender
- Ferdinand Saar Dry Gin, 44% 26
thyme, rosehip, hop blossom
- ◇ Hoos Lapsang Gin, 44.4% 30
lapsang, pine, cardamom
- ◇ Madame Geneva Rouge Gin, 41.9% 22
primitivo grapes, lavender, juniper

INDONESIA

- East Indies Archipelago Dry Gin, 41.8% 20
galingale, torch ginger flower, andaliman batak pepper

IRELAND

- ◇ Boatyard Double Gin, 46% 28
liquorice, lemon peel, bog myrtle
- ◇ Glendalough Wild Spring Botanical Gin, 41% 26
birch sap, sweet cicely, dandelion
- ◇ Von Hallers Gin, 44% 34
ginger, fuchsia, lemon verbena

ITALY

- ◇ Argalà Al Genepy Gin, 45% 26
genepy flower, acacia flower, apricot kernel
- ◇ Bordiga Rosa Gin, 42% 28
rosebud, orange peel, angelica
- Del Professore Monsieur Gin, 43.7% 22
zedoary, lavender, rose
- ◇ Gin Agricolo Gadan, 47% 26
iris, violet, rose
- ◇ Insulae Gin, 42% 32
carob, sesame d'ispica, pistachio
- ◇ Machaby Gin, 43% 26
marjoram, rose, elderberry
- ◇ Selvatiq Recipe 13, 40% 38
red clover, meadow sage, dog rose

JAPAN

- Benizakura 9148 Recipe 0101 Gin, 45% 36
hidaka kelp, blueberry, dried daikon
- ◇ Etsu Gin, 43% 22
yuzu, cherry blossom, sancho pepper

LATVIA

- ◇ Cross Keys Gin, 41% 28
chamomile, linden blossom, rosemary

NORWAY

- ◇ Kimerud Gin, 47% 22
rhodiola rosea, mint, walnut
- Oslo Gin, 45.8% 24
elderflower, coriander, birch leaves

MEXICO

- ◇ Condesa Classica Gin, 43% 25
palo santo, myrrh, elderflower

PORTUGAL

- ◇ 6M Friday Chic Gin, 40% 28
vine leaf, rose petal, orange blossom
- ◇ Amicis Gin, 40% 22
carqueja flower, santa maria herb, honey

SCOTLAND

- ◇ Arbikie Kirsty's Gin, 43% 26
blueberry, kelp, thistle
 - ◇ Drovers Gin, 45% 28
heather, thistle, orange peel
 - ◇ Glaswegin, 41.1% 26
milk thistle, pink pepper, orange flower
 - Hendrick's Gin, 41.4% 24
cucumber, rose, cubeb
 - Hendrick's Midsummer Solstice, 43.4% 28
lavender, orange blossom, rose
 - ◇ House of Elrick Gin, 42% 26
rose petal, heather, pink pepper
 - ◇ Kerr's Borders Gin, 43% 24
cassia, orange peel, liquorice
 - ◇ Orkney Gin Company Johnsmas Gin, 41.3% 28
rose petal, heather, mint
 - ◇ Strathearn Heather Rose Gin, 40% 24
heather, rose petal, liquorice
 - ◇ Theodore Pictish Gin, 43% 26
damask rose, oolong tea, pomelo
 - ◇ Vesperis Pictish Gin, 40% 26
heather honey, heather blossom, lemon peel
- SOUTH AFRICA**
- ◇ Geometric Gin, 43% 36
fynbos, buchu, cardamom
 - Inverroche Amber Gin, 43% 24
mountainous fynbos, juniper, citrus
 - Inverroche Classic Gin, 43% 24
limestone fynbos, lemon zest, orange zest
 - Inverroche Verdant Gin, 43% 24
coastal fynbos, lemon zest, orange zest
 - Musgrave Pink Gin, 43% 24
african ginger, grains of paradise, cardamom

MODERN - HERBAL

- ◇ Copperhead The Gibson Edition Gin, 40% 26
dill seed, fennel seed, black pepper
- ◇ Poppies Gin, 40% 28
juniper, liquorice, aniseed
- ◇ Spring Méditerranée Gin, 40.5% 40
bay leaf, lemon peel, thyme

BRAZIL

- ◇ McQueen & The Violet Fog Gin, 40% 26
rosemary, calamansi, açai
- WH 48 Dry Gin, 44% 24
cane leaf, ginger, yerba mate

CAMBODIA

- Seekers Mekong Dry Gin, 41.3% 24
cassava root, pandan, khmer basil

CANADA

- ◇ Endeavour Origins Gin, 45% 26
liquorice, red grapefruit, black pepper
- ◇ Endeavour Small Batch Gin, 45% 26
grain of paradise, red grapefruit, black pepper
- ◇ Kootenay Country Gin, 40% 26
orange peel, pine nut, rosemary
- ◇ Long Table London Dry Gin, 44% 24
fennel seed, rosemary, lemon peel
- ◇ Okanagan Spirits Family Reserve Gin, 40% 24
spruce tips, rose, tarragon
- ◇ Okanagan Spirits Gin, 40% 24
spruce tips, rose, orris root
- ◇ Old Blood Gin, 40% 28
mesopotamian coriander, liquorice, saskatoon berry
- ◇ Paul's Tomb Gin, 40% 24
pine, spruce tips, lemon peel
- ◇ Queensborough Dry Gin, 43% 24
spruce tips, rosemary, jasmine
- ◇ Sheringham Vancouver Island Seaside Gin, 43% 24
winged kelp, rose, lemon
- St. Laurent Gin, 43% 26
cubeb, grains of paradise, laminar seaweed
- ◇ Stump Coastal Forest Gin, 42% 24
cascade hops, bay laurel, grand fir
- ◇ Ungava Gin, 43.1% 24
artic blend, wild rosehip, cloudberry

CHINA

- ◇ Julu Silk Road Gin, 43% 24
african vanilla bean, citrus peel, grapefruit

CZECH REPUBLIC

- ◇ Koniferum Borovicka Gin, 37.5% 22
koniferum pine, cranberry, juniper

DENMARK

- ◇ Kobenhavn Klassik Lounge Gin, 40% 26
spruce, rose hip, juniper

ENGLAND

- Apoteca Gin, 43% 28
bee bread, propolis, blackcurrant leaf
- Cambridge Anty Gin, 42% 94
62 red wood ants, wood avens, nettle
- Cambridge Distillery Truffle Gin, 42% 60
truffle, lemon, juniper
- ◇ Dancing Cows Lymington Gin, 43% 26
hops, cardamom, angelica
- ◇ Gin Lane 1751 Victoria Pink Gin, 40% 26
star anise, coriander, angelica
- Half Hitch Gin, 40% 24
malawian black tea, bergamot, black pepper
- ◇ Land Of Saints Organic Gin, 40% 28
violet leaf, hyssop, rose buds
- ◇ Mayfield Gin, 40% 22
hops, coriander, orris root
- ◇ One Gin, 43% 26
sage, lemon peel, nutmeg
- ◇ ORIGIN Caprese Michelangelo - Italy Gin, 46% 24
juniper
- ◇ ORIGIN Istog - Kosovo Gin, 46% 24
juniper
- ◇ ORIGIN Meppel - Netherlands Gin, 46% 24
juniper
- ◇ Slingsby Gin, 42% 26
primrose, sweet cicely, milk thistle
- ◇ Stafford's Gin, 42% 26
rosemary, macadamia nut, lemon balm
- ◇ T.E.A Earl Grey Gin, 42% 24
earl grey, bergamot oil, bay leaf
- ◇ T.E.A. Jasmine Gin, 42% 28
rose petal, bay leaf, jasmine
- ◇ True North Sheffield Dry Gin, 42% 24
gentian, bilberry, henderson's relish
- ◇ Two Birds Speciality Cocktail Gin, 40% 24
juniper, orris root, coriander
- ◇ Unit Six Ultra Premium Gin, 42% 28
bergamot, pink pepper, freesia flower
- ◇ Zymurgorium The Original Manchester Gin, 40% 32
coriander, caraway, galangal

FINLAND

- ◇ Ägräs Gin, 43.7% 34
red clover, wild angelica, rosemary
- Kyrö Napue Gin, 46.3% 24
cranberry, sea buckthorn, birch leaf

FRANCE

- Fair Juniper Gin, 42% 22
cardamom, calamus root, angelica
- ◇ Fieldfare Dry Gin, 47% 34
fennel seed, angelica, masterwort

Gardener Gin, 42%	28	Del Professore Madame Gin, 42.9%	22
<i>liquorice, sweet almond, pink grapefruit</i>		<i>tansy, zedoary, cassia</i>	
◊ Gin D'Azur, 43%	26	◊ Gin Agricolo Blagheur, 47%	26
<i>menton lemon peel, marjoram, rosemary</i>		<i>cumin, southernwood, wormwood</i>	
◊ Sorgin, 43%	24	O'ndina Gin, 45%	30
<i>sauvignon blanc distillate, violet, broom flower</i>		<i>basil, majoram, thyme</i>	
◊ Terres de Mistral Gin, 40%	26	Giniu Gin, 40%	32
<i>herbs de provence, thyme, grapefruit peel</i>		<i>mastic, sage, myrtle</i>	
GREECE		◊ Grifu Gin, 43%	24
Grace Gin, 45.7%	20	<i>mint, mastic, sage</i>	
<i>orange blossom, myrtle leaf, rock samphire</i>		Piùcinque Gin, 47%	24
Votanikon Gin, 40%	20	<i>zedoary, bergamot, wormwood</i>	
<i>mountain tea, saffron, mastic</i>		◊ Simple Gin, 40%	22
GERMANY		<i>scotch pine shoots, elderflower, sage</i>	
Bitter Truth Pink Gin, 40%	22	JAPAN	
<i>aniseed, mace, fennel seed</i>		◊ Kanomori Craft gin, 47%	28
◊ Grassl Bergbrenner Gin, 43%	28	<i>hibiscus, kuromoji, star anise</i>	
<i>juniper, coriander, gentian</i>		Ki No Bi Kyoto Dry Gin, 45.7%	28
◊ Voluptas Gin, 43%	28	<i>yuzu, bamboo leaf, green shansho</i>	
<i>ginseng, maca, cumin</i>		Ki No Tea Gin, 46.7%	26
HONG KONG		<i>sencha tea, gyokuro green tea, ginger</i>	
Cat Nip Gin Series No 1, 45%	26	Nikka Coffey Gin, 47%	22
<i>phoenix honey orchard, grapefruit peel, ginger</i>		<i>amanatsu, apple, kabosu</i>	
INDIA		Okinawa Gin Recipe 02, 47%	26
Amrut Nilgis Gin, 42.8%	20	<i>moon peach, ginger, lemongrass</i>	
<i>paan, lemongrass, nilgiris tea</i>		ROKU Gin, 43%	22
Hapusa Dry Gin, 43%	22	<i>cherry blossom, cherry leaf, shanso pepper</i>	
<i>gondhoraj, mango, almond</i>		Sakurao Hamagou Gin, 47%	26
Jin Jiu Darjeeling Gin, 43%	20	<i>rosemary, hamagou, shiranui</i>	
<i>darjeeling tea, ginger, clove</i>		◊ Tatsumi Hop Gin, 47.5%	42
Jin Jiu India Dry Gin, 43.0%	18	<i>hops, roses, mandarin</i>	
<i>tulsi, black tea, chamomile</i>		Tatsumi Innaki Gin, 45%	30
◊ Stranger & Sons x Four Pillars 'Trading Tides' Gin, 42.8%	32	<i>juniper</i>	
<i>lemon myrtle, mangosteen, tamarind</i>		KENYA	
Terai Gin, 42.8%	20	Procera Green Dot Gin, 47%	45
<i>tulsi leaf, almond, rose</i>		<i>heartwood, foliage tips. juniper</i>	
IRELAND		LUXEMBOURG	
◊ Bonac 24 Gin, 42%	36	◊ Supa Saya Gin, 39.5%	28
<i>lemon peel, cucumber, spearmint</i>		<i>juniper, malt grain</i>	
◊ Boatyard "Mariposa Negra Edition" Gin, 46%	26	NETHERLANDS	
<i>toad skin melon, limequat, sweet gale</i>		◊ Palte Premium Gin, 43%	32
◊ Dalkey Gin, 42%	20	<i>green tea, gale, juniper</i>	
<i>dillisk seaweed, sea salt, lemon</i>		◊ VL 92 Gin, 41.7%	28
Dingle Gin, 42.5%	22	<i>coriander, cinnamon, caraway</i>	
<i>hawthron, bog myrtle, rowan berry</i>		NEW ZEALAND	
◊ Ornabrak Single Malt Gin, 43%	26	◊ Black Robin Rare Gin, 43%	38
<i>douglas fir, lemon verbena, angelica</i>		<i>star anise, lime zest, lemongrass</i>	
ITALY		Curiosity Dry Gin, 40%	22
◊ Clandestino Dry Gin, 40%	26	<i>kawakawa, horopito, manuka</i>	
<i>cardamom, angelica, calamus</i>		◊ Victor Gin, 42%	24
		<i>lemongrass, cardamom, coriander</i>	

MODERN - HERBAL

NORWAY			
	Bareksten Gin, 46%	26	
	<i>elderflower, lingonberry, rhubarb</i>		
PERU			
	Amazonian Gin Company Gin, 41%	24	
	<i>camu camu, tonka bean, sasha inchi</i>		
SCOTLAND			
◇	Gordon Castle Gin, 43%	26	
	<i>mint, lavender, gooseberry</i>		
	Isle of Harris Gin, 43%	24	
	<i>sugar kelp, liquorice, cassia</i>		
	Red Door Highland Gin, 45%	24	
	<i>lemon peel, bitter orange peel, coriander</i>		
◇	Verdant Dry Gin, 43%	26	
	<i>angelica, green cardamom, bitter orange peel</i>		
◇	Wild Island Botanic Gin, 43.7%	26	
	<i>bog myrtle, heather flowers, meadowsweet</i>		
SINGAPORE			
	Kyuri Gin, 43%	26	
	<i>japanese cucumber, sakura cherry blossom, juniper</i>		
SOUTH AFRICA			
	Autograph Gin, 43%	22	
	<i>artemesia afra, buchu, angelica</i>		
	Hobbs Cape Dry Gin, 43%	20	
	<i>lime leaf, lemongrass, coriander</i>		
	KWV Cruxland Gin, 43%	26	
	<i>kalahari truffle, honeybush, aniseed</i>		
◇	New Harbour Distillery Rooibos Infused Gin, 43%	24	
	<i>rooibos, sweet orange peel, cassia</i>		
◇	New Harbour Distillery Spekboom Gin, 43%	24	
	<i>spekboom tree leaf, liquorice, almonds</i>		
◇	Woodstock Gin 399 on Albert, 43%	26	
	<i>rose geranium, rosemary, buchu</i>		
◇	Woodstock Gin Inception Beer Base Gin, 43%	24	
	<i>honeybush, buchu, juniper</i>		
SPAIN			
◇	19 Flors Gin, 40%	24	
	<i>black tea, chamomile, cilantro</i>		
◇	BCN Gin, 40%	28	
	<i>southern wormwood, rosemary, fig</i>		
◇	Fever Island Premium Gin, 40%	24	
	<i>lemongrass, fennel seed, rosemary</i>		
◇	Germà Dry-Gin, 44%	22	
	<i>cardamom, coriander, juniper</i>		
	Gin Mare, 42.7%	24	
	<i>olive, rosemary, thyme</i>		
◇	Ginebra K-25 Gin, 45%	26	
	<i>mandarin, chamomile, mint</i>		
◇	Harbour 40 Degrees 48 N Gin, 40%	24	
	<i>sea fennel, sea rocket, glasswort</i>		
◇	Larios Ginebra Mediterranea Gin, 37.5%	24	
	<i>coriander, juniper, orange peel</i>		
	Mascaro 9 Gin, 40%	22	
	<i>juniper</i>		
	Puerto de Indias Pure Black Edition Gin, 40%	24	
	<i>jasmine, vanilla, orange blossom</i>		
◇	Ruchey Nispero London Dry Gin, 40%	22	
	<i>medlar, coriander, cardamom</i>		
	Santamania Lola y Vera Gin, 40%	24	
	<i>apple, ginger, sunflower</i>		
	Santamania London Dry Gin, 41%	24	
	<i>liquorice, raspberry, wild rosemary</i>		
◇	Suau Gin, 43%	24	
	<i>sóller orange peel, rosemary, fig leaf</i>		
◇	Valxerit Gin, 40%	22	
	<i>rosemary, ginger, cherry</i>		
	Xoriguer Mahon Gin, 38%	26	
	<i>sage, juniper needle, pine</i>		
SWEDEN			
	Bergslagen Organic Gin, 45.7%	22	
	<i>lingonberry, coriander, lemon peel</i>		
SWITZERLAND			
◇	Breil Pur Gin, 45%	34	
	<i>rhododendron, alpine rose, chocolate mint</i>		
◇	Modernist Alpine Dry Gin, 44%	32	
	<i>mountain sage, mountain thyme, elderflower</i>		
◇	nginious! Swiss Blended, 45%	38	
	<i>laurel fruit, hay flower, black currant leave</i>		
◇	Rheinbrand Dry Gin, 40%	38	
	<i>elderflower, riesling, lemongrass</i>		
◇	Rheinbrand Hemp Edition Gin, 40%	38	
	<i>elderflower, riesling, cbd hemp</i>		
USA			
◇	ATELIER Vie Euphrosine #9 Gin, 45%	28	
	<i>bay leaf, coffee, hyssop</i>		
◇	Breuckelen Glorious Gin, 45%	26	
	<i>ginger, rosemary, grapefruit peel</i>		
◇	Catoctin Creek Watershed Gin, 46%	24	
	<i>cinnamon, anise, coriander</i>		
	Corsair Gin, 44%	24	
	<i>angelica, orris root, orange peel</i>		
◇	Farallon Gin, 43%	22	
	<i>cucumber, fennel seed, lemongrass</i>		
	Farmer's Organic Gin, 46.7%	24	
	<i>lemongrass, elderflower, cucumber</i>		
◇	FEW Breakfast Gin, 42%	28	
	<i>earl grey tea, bergamot, coriander</i>		
◇	Golden Moon Gin, 45%	28	
	<i>mint, lavender, juniper</i>		
◇	Half Moon Orchard Gin, 46%	24	
	<i>fresh bergamot, apple, nutmeg</i>		

◊ Hedge Trimmer Gin, 42%	22	Four Pillars Christmas Edition (2021), 43.8%	28
<i>sarsaparilla, watermelon rind, coriander</i>		<i>christmas pudding, cassia, lavender</i>	
◊ Junipero Gin San Francisco Strength, 49.3%	24	◊ Gunnery Australian Spiced Gin, 40%	36
<i>coriander, liquorice, cubeb</i>		<i>bush tomato, demerara, vanilla bush honey</i>	
New Deal No.1 Gin, 45%	22	◊ Knocklofty Penn Gin, 40%	34
<i>juniper</i>		<i>lemongrass, pepperberry, basil</i>	
◊ Ransom Dry Gin, 43%	24	◊ McHenry Federation Gin, 42.2%	28
<i>marionberry, hops, anise</i>		<i>quandong, mountain pepper leaf, celery top pine</i>	
St. George Botanivore Gin, 45%	22	Melbourne Moonshine Memo Gin, 41.8%	22
<i>coriander, dill, grapefruit peel</i>		<i>cascara, navel orange, cardamom</i>	
St. George Terroir Gin, 45%	22	◊ Moontide White Pearl Gin, 41%	26
<i>douglas fir, roasted coriander, laurel</i>		<i>gubiny, guwarl, sandalwood</i>	
◊ The Walter Collective Gin, 45%	26	Prohibition Juniperus Gin, 47%	32
<i>cassia, cardamom, grapefruit peel</i>		<i>grains of paradise, macadamia, vanilla</i>	
Tinkerman's Curiously Bright & Complex Gin, 46%	20	AUSTRIA	
<i>jasmine tea, ginger, lemongrass</i>		◊ Reisetbauer Blue Gin, 43%	26
TRU Organic Gin, 42%	24	<i>cinnamon, hops, almond</i>	
<i>vanilla bean, clove, chamomile</i>		BELGIUM	
◊ Uncle Val's Peppered Gin, 45%	24	◊ Beernaert Original Pure Gin, 40%	26
<i>sage, lavender, cucumber</i>		<i>juniper, cardamom, coriander</i>	
◊ Valor West Coast Gin, 43.1%	22	◊ Belgin Speciale Gin, 41.4%	26
<i>cinnamon, pink pepper, anise</i>		<i>lemon peel, hops, clove</i>	
◊ Vapor Distillery Rhok Gin, 47%	28	Blind Tiger Handcrafted Gin Piper Cubeba, 47%	32
<i>lavender, sencha tea, chamomile blossom</i>		<i>cubeb, orange blossom, malted barley</i>	
◊ Volstead's Folly American Gin, 40.5%	24	◊ Soul Tamashii Gin, 46%	24
<i>sichuan pepper, sage, rosemary</i>		<i>lavender, hops, poppy</i>	
◊ Voyager Dry Gin, 42%	22	◊ Spring Gentleman's Cut Gin, 48.8%	50
<i>oak chip, elderberry, sage</i>		<i>rhubarb root, pine buds, black pepper</i>	
VIETNAM		◊ Spring Original Gin, 43.8%	32
◊ Mashed Up Craft Gin, 43%	20	<i>rhubarb root, pine buds, black pepper</i>	
<i>corn, hops, kumquat</i>		CANADA	
WALES		◊ Dixon's Wicked Gin, 40%	22
◊ Da Mhile Seaweed Organic Gin, 42%	24	<i>liquorice, elderberry, grains of paradise</i>	
<i>seaweed, eucalyptus, mint</i>		◊ Old Order Legacy Gin, 40%	24
		<i>apples, sumac, sage</i>	
		◊ Tempo Renovo Dry Gin, 40%	24
		<i>liquorice, angelica, coriander</i>	
		CHINA	
		◊ Julu Dry Gin, 40%	20
		<i>apple blossom, cumin, nutmeg</i>	
		CZECH REPUBLIC	
		◊ Žufánek Le Gin Occulte Gin, 45%	32
		<i>pink pepper, vanilla, juniper</i>	
		ENGLAND	
		Chase GB GIN, 40%	22
		<i>cinnamon, cardamom, ginger</i>	
		◊ Indian Summer Saffron Infused Gin, 46%	24
		<i>saffron, angelica, coriander</i>	
		◊ Masons Dry Yorkshire Tea Edition Gin, 42%	24
		<i>black tea, sichuan pepper, bay leaf</i>	

SPICED

PEPPERS, BAKING SPICES, FRAGRANT

AUSTRALIA

78 Degrees Classic Gin, 42%	22
<i>cinnamon, nutmeg, star anise</i>	
78 Degrees Desert Gin, 48%	24
<i>blood lime, clove, black pepper</i>	
◊ Brookies Byron Dry Gin, 46%	32
<i>blood lime, aniseed myrtle, ginger</i>	
Canberra Distillery Dry Gin, 47%	24
<i>cassia, mountain pepperleaf, liquorice</i>	
Four Pillars Bloody Shiraz Gin, 37.8%	26
<i>shiraz grape, cinnamon, pepperberry</i>	
Four Pillars Spiced Negroni Gin, 43.8%	22
<i>pepperberry leaf, cinnamon, ginger</i>	

MODERN - SPICED

◊ Sacred Coriander Gin, 40%	26	Maharani Gin, 41%	22
<i>coriander, angelica, orris root</i>		<i>nutmeg, mace, pomelo</i>	
◊ Scilly Spirit Island Gin, 44%	28	◊ Ninth Wave Irish Gin, 43%	24
<i>javan pepper, cardamom, cassia</i>		<i>lemon verbena, cardamom, orange peel</i>	
◊ Zymurgorium Mandarin Dynasty Gin, 40%	34	ITALY	
<i>mandarin, sichuan pepper, clove</i>		◊ Roby Marton's Gin, 47%	26
◊ Metsis Gin, 44%	24	<i>horseradish, ginger, clove</i>	
<i>cinnamon, ginger, apricot</i>		Rocca di Montenassi Imperiale Gin, 43%	26
FINLAND		<i>elderberry, tumeric, bergamot</i>	
Kalevala Distilled Gin, 46.3%	22	◊ Solaro Capri Gin, 42%	38
<i>raspberry leaf, ginger, cardamom</i>		<i>arabica coffee, mirto, amalfi lemon</i>	
FRANCE		JAPAN	
◊ Audemus Pink Pepper Gin, 44%	28	135 East Hyogo Dry Gin, 42%	28
<i>pink pepper, honey, cinnamon</i>		<i>shiso, ume, sansho pepper</i>	
G'Vine Nouaison Gin, 43.9%	24	◊ Kibou Hokkaido Shakotan Gin, 45%	25
<i>sandalwood, vetiver, ginger</i>		<i>red pine, seaweed, juniper</i>	
◊ Generous Coriander & Combava Gin, 44%	32	KENYA	
<i>coriander, combava, red pepper</i>		Procera Blue Dot Gin, 44%	38
Generous Purple Gin, 44%	24	<i>locust bean, mukombera, oyster shell</i>	
<i>timut pepper, grapefruit, lemon</i>		NETHERLANDS	
Le Gin 1 & 9 Gin, 40%	24	◊ 1689 Gin, 42%	20
<i>ginger, jamaican pepper, cinnamon</i>		<i>quince, pippin, citrus peel</i>	
◊ Thompson's Small Batch Gin, 43%	26	Gin & Jonnie GastroGin, 45%	22
<i>peach, caviar, jamaican pepper</i>		<i>sichuan pepper, fennel seed, verbena</i>	
GERMANY		◊ Schermer Dry Gin, 43%	24
◊ Bavarka Bavarian Gin, 46%	28	<i>allspice, rhubarb, lavender</i>	
<i>hops, fennel seed, hay flower</i>		◊ Wagging Finger Exercise V2.0 Gin, 44%	24
◊ Carginthia Gin, 42%	28	<i>juniper, coriander, cassia</i>	
<i>bayleaf, rosemary, cinnamon</i>		NEW ZEALAND	
◊ Granit Bavarian Gin, 42%	32	Denzien Smoke & Embers Gin, 44%	32
<i>melissa, bald-money, gentian root</i>		<i>chipotle, morita, habanero</i>	
◊ Madame Geneva Blanc Gin, 44.4%	22	◊ Hidden World Hot Cross Bun Gin, 44%	38
<i>juniper, coriander, ginger</i>		<i>cinnamon, nutmeg, sultana</i>	
The Illusionist Dry Gin, 45%	30	◊ Hidden World Oriental Spice Gin, 44%	32
<i>mace, blue pea flower, liquorice</i>		<i>sichuan pepper, clove, cinnamon</i>	
HONG KONG		SCOTLAND	
Cat Nip Gin Series No 2, 45%	26	◊ Hendrick's Lunar Gin, 43.4%	26
<i>da hong pao, coriander seed, mandarin</i>		<i>cucumber, rose, cubeb</i>	
INDIA		◊ Orkney Gin Company Mikkemas Gin, 41.3%	28
Stranger & Sons Gin, 42.8%	22	<i>cinnamon, rosehip, orange peel</i>	
<i>black pepper, gondhoraj lime peel, coriander</i>		SINGAPORE	
INDONESIA		Tanglin Orchid Gin, 42%	22
East Indies Banda Spiced Negroni Gin, 43%	22	<i>vanilla, orchid, amchoor powder</i>	
<i>mace, nutmeg, star anise</i>		Tanglin Singapore Gin, 42%	22
IRELAND		<i>chilli, kaffir lime leaves, chenpi</i>	
Bertha's Revenge Gin, 42%	26	SRI LANKA	
<i>almond, elderflower, sweet woodruff</i>		Colombo No. 8 Gin, 43.7%	24
◊ Blackwater Distillery Barry's Tea, 40%	22	<i>ginseng, ginger root, coriander</i>	
<i>orange, cinnamon, cardamom</i>			

SOUTH AFRICA

- A Mari Indian Ocean Gin, 43% 24
ajwain seed, swahili lime, pink peppercorn
- Ginologist Spiced Gin, 43% 22
grains of paradise, ashanti pepper, cardamom
- Hope On Hopkins Mediterranean Gin, 43% 26
olive, basil, thyme
- ◊ Pienaar & Son Orient Gin, 43% 26
allspice, ginger, cassia
- ◊ Woodstock Gin 001 on Searle, 43% 26
ginger, lavender, coriander

SPAIN

- ◊ Santamania x Four Pillars Gin, 40% 26
bush tomato, rosemary, olive leaf

SWEDEN

- ◊ ND Forest Dry Gin, 40% 28
pine, spruce, clove

SWITZERLAND

- ◊ Arctic Velvet Gin, 40% 34
nutmeg, cumin, coriander
- ◊ Basilisk Dry Gin, 44% 38
hibiscus blossom, pimento, clove
- ◊ Matte Dry Gin, 42% 38
violet root, ginger, cinnamon
- ◊ Turicum Dry Gin, 41.5% 34
linden flower, orange blossom, thyme

THAILAND

- ◊ Kristall Thai Spirit Gin, 40% 22
lemongrass, alston pepper, citrus
- ◊ Origin Gin, 40% 22
oolong tea, bael fruit, mah kwan pepper
- Paper Lantern Sichuan Pepper Gin, 40% 22
sichuan pepper, makhwaen, longan berry honey

USA

- ◊ Commerce Gin, 42.5% 22
cumin, cardamom, lime zest
- ◊ Fid Street Hawaiian Gin, 45% 28
pineapple, cedar leaf, fennel seed
- ◊ Imagination Gin, 40% 22
sichuan pepper, celery, lavender
- ◊ Letherbee Gin, 48% 26
cubeb, ginger, almond
- ◊ Madam Pattirini Gin, 44% 24
bergamot, ginger, cardamom
- ◊ Roxor Artisan Gin, 45% 28
grapefruit zest, texas pecan, sarsaparilla
- St. George Dry Rye Gin, 45% 22
black pepper, grapefruit peel, caraway
- Tinkerman's Sweet Spiced Gin, 46% 22
wormwood, grains of paradise, lemon verbena

VIETNAM

- ◊ Baigur Gin, 43% 32
dragonfruit, bird's eye chilli, lotus
- Lady Trieu Dalat Flowerbomb Gin, 45% 22
lotus flower, chrysanthemum, jasmine
- Lady Trieu Mekong Delta Dry Gin, 45% 22
kumquat, liquorice, star anise
- Lady Trieu Hoi An Spice Road Gin, 45% 22
ginger, cardamom, fennel seed

LUSCIOUS
DELICATE, VELVETY SWEETENED, SCRUMPTIOUS

AUSTRALIA

- ◊ Prohibition Christmas Gin 2022, 38% 32
fig, cherry, vanilla

BELGIUM

- ◊ Holy Water Cuberdon Gin, 40% 38
juniper, coriander, orange zest

ENGLAND

- Ableforth's Bathtub Old Tom Gin, 42.4% 30
liquorice, coriander, cardamom
- Hayman's 1820 Gin Liqueur, 40% 22
orange peel, lemon peel, nutmeg
- ◊ Hayman's English Cordial Gin, 42% 26
lemon peel, liquorice, angelica
- ◊ Keeper's Honey Gin, 40% 26
honey, cardamom, cassia
- Tarsier Pink Gin, 40% 22
dragon fruit, galangal, calamansi
- ◊ The Distillery Celebrated Butter Gin, 44% 32
butter, bitter orange peel, nutmeg
- ◊ Whitley Neil Blackberry Gin, 43% 20
plump berries, cassia, black pepper

GERMANY

- ◊ Mundart Kaiserstuhl Dry Gin, 43% 30
aniseed, coriander, lemon peel
- ◊ Sears Cutting Edge Gin, 44% 22
juniper, bergamot, coriander

SCOTLAND

- Boë Passion Gin, 41.5% 26
passionfruit, orange peel, mint
- Tanqueray Flor de Sevilla, 41.2% 22
seville orange, orange blossom, liquorice

SINGAPORE

- Chendol Gin, 40% 24
pandan, coconut, juniper
- Coconut Pandan Gin, 43% 20
coconut, pandan, orange

MODERN - LUSCIOUS . NUTTY . EARTHY

SOUTH AFRICA

- ◇ Cape Town Rooibos Red Gin, 43% 24
rooibos, cinnamon, orange peel

SPAIN

- ◇ Botanic Ultra Premium London Dry Gin, 45% 28
chamomile, almond, mango

THAILAND

- Iron Balls Gin, 40% 22
coconut, pineapple, ginger

USA

- FEW American Gin, 40% 24
tahitian vanilla, cassia, hops



CANADA

- Cirka Sauvage Gin, 44% 24
bergamot, lavender, red pine

SCOTLAND

- ◇ Rock Rose Autumn Gin, 41.5% 24
bilberry, coriander, nasturtium flower

SWITZERLAND

- ◇ Matters Nutmeg Gin, 44% 28
ginger, nutmeg, hyssop



AUSTRALIA

- ◇ Applewood Distillery Gin, 43% 36
pepperberry, wattleseed, macadamia
- ◇ Artemis Gin, 44% 28
eucalyptus, artemesia, finger lime
- Manly Spirits Australian Dry Gin, 40% 28
sea lettuce, finger lime, pepperberry

BELGIUM

- ◇ Belgin Fresh Hop Gin, 40% 26
hops, cardamom, vanilla

CANADA

- ◇ Dixon's VirGin Gin, 40% 22
liquorice, cinnamon, vanilla
- ◇ Seraph Gin, 40% 24
coriander, chicory, rose

ENGLAND

- ◇ Caspyn Midsummer Dry Gin, 40% 24
lemon verbena, cucumber, hibiscus
- ◇ ORIGIN Klanac - Croatia Gin, 46% 24
juniper
- ◇ ORIGIN Skopje - Macedonia Gin, 46% 24
juniper

- ◇ Tappers Darkside Gin, 39.6% 38
sea beet, cardamom, chickweed

FINLAND

- ◇ Isfjord Gin, 44% 28
lemongrass, sandal tree oil, cardamom

GERMANY

- ◇ Monkey 47 Distiller's Cut Edition of 2016 Gin, 47% 42
pomelo, lemon balm, fir honey

ITALY

- ◇ Aduro Bell Pepper Gin, 40% 36
green capsicum, mugwort, ginger
- ◇ Volcano Etna Dry Gin, 41% 26
hazelnut, bitter orange, etna broom flower

JAPAN

- ◇ Benizakura 9148 Recipe 1922 Gin, 42% 28
smoked juniper, hidaka kelp, pink pepper
- ◇ Benizakura 9148 Recipe 3891 Gin, 45% 26
red maple, mountain wasabi, red purple soup
- Sakurao Limited Edition Gin, 47% 24
sakura, kinome, ground oyster shell

NEW ZEALAND

- ◇ Hidden World Guardian Wild Spice Gin, 44% 32
kawakawa leaf, horopito, lime
- ◇ Karven Ginseng Gin, 40% 28
ginseng, lemon, orange

PORTUGAL

- ◇ Sharish Gin, 40% 32
lemon verbena, cinnamon, apple

SCOTLAND

- Hendrick's Orbium Gin, 43.4% 28
quinine, wormwood, cucumber
- ◇ Kilmahew Gin, 42% 26
orange peel, bramble leaf, rosehip
- Nàdar Gin, 43% 24
peas, lemongrass, citrus leaf

SOUTH AFRICA

- Musgrave Gin, 42% 24
cardamon, african ginger, grains of paradise

SWITZERLAND

- ◇ Jinpero Superior Dry Gin, 46% 29
lemongrass, lime blossom, ginger
- ◇ Ojo De Agua Dry Gin, 43% 32
mate, brandy, blackberry spirit

USA

- ◇ Automatic Sea Gin, 45% 32
nori, sage, lemongrass
- ◇ Battle Standard Standard Strength Gin, 45% 24
cardamom, coriander, cinnamon
- ◇ Bumpers & Lazarus Dry Gin, 47% 26
liquorice, angelica, cinnamon

- ◇ Cold River Traditional Gin, 47% 26
angelica, cardamom, coriander
- ◇ Crater Lake Gin, 47.5% 28
juniper
- ◇ Lee Spirits Dry Gin, 45% 20
angelica, cardamom, lemon peel
- ◇ Letherbee Autumnal Gin, 48% 26
cranberry, rosemary, lemon peel

GRASSY
GREENNESS, TALL GRASS, MEADOW

- AUSTRALIA**
- ◇ Darwin Gin, 40% 34
kakadu plum, water lily, lemongrass
- BELGIUM**
- ◇ Meyer's M2 Gin, 43% 36
white asparagu, orris root, sage
- CANADA**
- ◇ The Empiric Gin, 40% 24
hops, lavender, lemon verbena
- ENGLAND**
- ◇ Hepple Gin, 45% 26
douglas fir, bog myrtle, green juniper
- FINLAND**
- Kyrö Helsingin, 46.3% 38
elderberry flower, wild chamomile, polypody root
- Kyrö X Ki No Bi Gin, 43.7% 26
caraway, yuzu, red shisho
- GERMANY**
- ◇ Amato Wiesbaden Gin, 43.7% 26
cucumber, tomato, quince
- HUNGARY**
- ◇ Opera Gin, 44% 30
citronella grass, lavender, poppy seed
- INDIA**
- Jaisalmer Handcrafted Gin, 43% 22
darjeeling green tea, vetiver, lemongrass
- NETHERLANDS**
- Rutte Celery Gin, 43% 24
celery, orange peel, cardamom
- SCOTLAND**
- ◇ Eden Mill Hop Gin, 46% 28
galaxy hops, lemon peel, juniper
- Hendrick's Neptunia Gin, 43.4% 30
elderflower, sea cucumber, sea kelp
- SINGAPORE**
- Rojak Gin, 45% 26
juniper, torch ginger, lemon peel

- SPAIN**
- ◇ LEVEL Gin, 44% 22
cardamom, grapefruit, angelica
- ◇ Wint & Lila Gin, 40% 24
orange blossom, cinnamon, peppermint
- SWEDEN**
- ◇ Hernö Pink BTL Gin, 42% 32
rose petal, strawberry, vanilla
- Mackmyra Kreatör Organic Gin, 47.3% 28
grape, elderberry, raspberry
- SWITZERLAND**
- ◇ Studer Swiss Classic Gin, 40% 34
lavender, lemongrass, ginger
- ◇ Studer Swiss Gold Gin, 40% 36
citrus grass, lavender, ginger
- TAIWAN**
- Zhen Gin, 40% 38
bhutanese juniper, coriander, osmanthus
- THAILAND**
- Saneha Gin, 40% 24
sugarcane, makwean, ginger flower
- USA**
- ◇ Nautical American Gin, 42% 22
pacific kombu, spearmint, lemongrass
- WALES**
- ◇ Wye Valley Gin , 42% 26
elderflower, linden flowers, mugwort

BERRIES
PLUMP, ROUNDNESS, JAMMY

- AUSTRIA**
- ◇ Hands On Gin, 46.5% 28
blackcurrant, coriander leaves, orange peel
- FINLAND**
- Arctic Blue Gin, 46.2% 28
wild arctic bilberry, cardamom, spruce needle
- POLAND**
- ◇ Polugar No. 10 Russian Gin, 38.5% 28
lingonberry, cloudberry, calamus
- PORTUGAL**
- ◇ Edmundo Alvarinho-Infused London Dry Gin, 40% 38
albariño grape, juniper
- ◇ Sharish Blue Magic Gin, 40% 34
blue pea flower, ginger, raspberry
- SOUTH AFRICA**
- Blind Tiger Rarely Sighted Gin, 43% 24
blackcurrant, grapefruit, angelica

MODERN - FRUITY



AUSTRALIA

Lawrenny Van Diemen's Gin, 42.5% 24
lime flower, almond, strawberry

Manly Spirits Co. Lilly Pilly Pink Gin, 40% 24
rosella, sea fig, blood orange

BELGIUM

◊ Belgin St. Cruyt Gin, 43% 28
forest berry, lavender, sage

◊ Buss No.509 Persian Peach Gin, 40% 28
peach, iris, vanilla

◊ Clover Gin, 40% 32
pear, clover leaf, lavender

◊ Copperhead x Scarfes Bar, 41% 32
apple, pine blossom, pine nut

CANADA

◊ Romeo's Gin, 46% 20
dill, lavender, almond

ENGLAND

◊ Crazy Gin, 41% 32
fruit lassi, black pepper, turmeric

Dodd's Gin, 49.9% 24
red raspberry leaf, bay laurel, honey

◊ Sacred Christmas Pudding Gin, 43.8% 26
christmas pudding, frankincense, juniper

◊ That Boutique-y Spit-Roasted Pineapple Gin, 40.1% 28
pineapple, cinnamon, nutmeg

◊ The Gin Kitchen Blushing Monkey Pink Gin, 48% 28
black grape, ginger, allspice

GERMANY

◊ Big Kahuna Gin, 40% 22
lavender, apricot, pineapple

IRELAND

◊ Connnullin Irish Gin, 47% 34
elderberry flower, hawthorn berry, angelica

◊ Mór Irish Gin, 40% 22
rosemary, blackberry, cranberry

ITALY

◊ Gin Agricolo Evra, 47% 26
raspberry, mint, almond leaf

NETHERLANDS

◊ Sikkim Privee Premium Gin, 40% 26
red tea, cilantro, coriander

NEW ZEALAND

Roots Marlborough Dry Gin 45% 24
wild kawakawa, gorse flowers, motueska hops

PHILIPPINES

◊ Ginebra San Miguel Premium Gin, 35% 20
juniper, coriander, berry

SCOTLAND

◊ Eden Mill Love Gin, 42% 28
rose petal, hibiscus, raspberry leaf

◊ Pilgrim's Original Gin, 40% 26
grapefruit, blackcurrant, liquorice

Porter's Orchard Gin, 40% 28
apple, pear, juniper

SPAIN

◊ Akori Gin, 42% 28
kumquat, ginger, dragon fruit

◊ Get Back Blue Gin, 40% 22
rose petal, tangerine, lemon peel

◊ Law Premium Gin, 44% 32
spanish cucumber, prickly pear, padron pepper

Mackmyra Lab + Distillery Organic Gin, 40% 22
elderflower, lingonberry, mango

USA

Dry Fly Gin, 40% 22
apple, mint, hops

◊ Green House Artisan Gin, 40% 26
açai, cucumber, bergamot

OVERPROOF AND NAVY STRENGTH

Gin has a rich history within the British Royal Navy, for centuries it was issued to all ships sailing the high seas. Traditionally, to prove its strength and quality, it had to be able to wet and ignite gun powder. Over time it was deduced that the lowest proof for this experiment to succeed was 114 proof, or 57% abv (alcohol by volume). This higher proof makes the gin and the botanicals shine.

CITRUS

BRIGHT, ZINGY, REFRESHING

AUSTRALIA

- ◇ Botanic Australis Navy Strength Gin, 57% 36
lemon-scented gum, bunya nut, pepperberry
- Four Pillars Navy Strength Gin, 58.8% 26
fresh ginger, turmeric, native ginger lime
- ◇ Naught Overproof Gin, 57.4% 27
apple, macadamia, pink grapefruit
- Poor Toms Fool Strength Gin, 52% 24
liquorice, green cardamom, grapefruit peel
- Shetland Reel Up Helly AA Gin, 57% 28
rosemary, thyme, strawberry jam

BELGIUM

- ◇ Ginlus by Duin Gin, 50% 34
laurel, black pepper, lavender

ENGLAND

- ◇ Fords Officers' Reserve Gin, 54.5% 26
angelica, jasmine, cassia
- ◇ Mary Le Bone London Dry Gin, 50.2% 32
lemon balm, clove, lime flower
- Plymouth Navy Strength Gin, 57% 26
lemon peel, orris root, angelica

SWEDEN

- ◇ Hernö Navy Strength Gin, 57% 34
coriander, cassia, black pepper
- ◇ Strane Navy Strength London Dry Gin, 57.1% 40
lemon rind, cinnamon, liquorice

USA

- ◇ Battle Standard Navy Strength Gin, 57% 28
cardamom, coriander, cinnamon
- ◇ Leopold's Navy Strength American Gin, 57% 30
bergamot, orris root, cassia bark

FLORAL

BOUQUET, PERFUMED BLOOMS, PETALS

ENGLAND

- ◇ 57 London Dry Navy Strength Gin, 57% 28
savory, angelica, coriander
- Sipsmith VJOP Gin, 57.7% 28
juniper, coriander, orange peel

HERBAL

FRESH BUNCH, DRIED LEAVES, VEGETAL

AUSTRALIA

- ◇ Animus Classic Dry Gin, 50% 28
lemon myrtle, sarsaparilla, pepperberry
- ◇ Animus Macedon Dry Gin, 50% 28
lemon myrtle, sarsaparilla, pepperberry
- ◇ Loch Distillery The Weaver Gin, 50% 24
anise myrtle, cinnamon myrtle, mace
- Old Young's Common Gin, 57.5% 24
juniper
- Old Young's Six Seasons Gin, 50% 24
sea parsley, thryptomene, desert lime
- West Winds Broadside Gin, 58% 28
salt, wattleseed, sea parsley
- West Winds Cutlass Gin, 50% 24
bush tomato, coriander, cinnamon myrtle

BELGIUM

- ◇ Buss No.509 White Rain Gin, 50% 30
marjoram, verbena, angelica

ENGLAND

- ◇ Ancient Mariner London Cut Dry Gin, 50% 32
savory, coriander, angelica
- Gunroom Navy Gin, 57% 28
orange peel, lemon peel, angelica
- Hayman's Royal Dock Gin, 57% 24
coriander, cassia, nutmeg
- ◇ Kew Organic Explorers' Strength Gin, 57.3% 28
basil, violet, lavender

OVERPROOF AND NAVY STRENGTH - HERBAL . SPICED . EARTHY . GRASSY . FRUITY

- ◇ Twisted Nose Dry Gin, 52% 36
grapefruit zest, fennel seed, watercress

FINLAND

- Kalevala Navy Strength Gin, 50.9% 24
jerusalem artichoke, rosemary, sea buckthorn

JAPAN

- ◇ Ki No Bi Sei Gin, 54% 28
ginger, hinoki wood chip, green tea

NETHERLANDS

- ◇ Driftwood JVS Navy Gin, 55% 32
liquorice, orris, lemon zest

SCOTLAND

- ◇ Avva Navy Strength Scottish Gin, 57.2% 32
lime peel, mint, red clover

- ◇ Edinburgh Cannonball Navy Strength Gin, 57.2% 30
sichuan pepper, lemon peel, juniper

- ◇ Rock Rose Navy Strength Gin, 57% 28
rhodiola rose, rowanberry, sea buckthorn

USA

- ◇ Swallowtail Navy Strength Gin, 57% 24
angelica, cardamom, grains of paradise



AUSTRALIA

- ◇ Animus Ambrosian Gin, 50% 28
kaffir lime leaf, white sesame, fresh turmeric

- ◇ Animus Arboretum Gin, 50% 28
strawberry gum leaf, rosemary, bush tomato

- ◇ Lady of the North Navy Strength Gin, 57.5% 28
turkey bush, lemon myrtle, kakadu plum

BELGIUM

- ◇ GinGer by Duin Gin, 50% 36
galangal, lemon thyme, coriander

CHINA

- ◇ Crimson Pangolin Navy Strength Gin, 58% 28
corriander, sichuan peppercorn, lemon peel

ENGLAND

- Cadenhead's Old Raj Blue Gin, 55% 28
saffron, almond powder, cinnamon

GERMANY

- Elephant Navy Strength Gin, 57% 26
pimento, devil's claw, buchu

KENYA

- Procera Red Dot Gin, 51% 40
oyster shell, elephant pepper, honey

NEW ZEALAND

- Dancing Sands Wasabi Gin, 58% 26
wasabi, orange, horopito

SRI LANKA

- Colombo Navy Strength Gin, 57% 24
sri lankan curry leaves, ginger root, coriander

SWEDEN

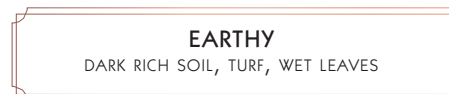
- ◇ Spirit of Hven Organic Navy Strength Gin, 57.1% 36
cinnamon, cassia, juniper

USA

- ◇ Connption Navy Strength Gin, 57% 28
rosemary, caraway, fig

- ◇ Gun Club Gin, 50% 22
clove, nutmeg, cranberry

- Perry's Tot Navy Strength Gin, 57% 24
wild flower honey, cinnamon, juniper



AUSTRALIA

- Lawrenny 1818 Settlers Gin, 52.5% 26
rosemary, caraway, pimento

- Never Never Juniper Freak Gin, 52% 28
juniper, angelica, pepperberry

ENGLAND

- ◇ Anno 60² Gin, 60% 36
samphire, lavender, black pepper

- ◇ Tarquin's Navy Strength Limited Edition Gin, 57% 28
cinnamon, fresh orange, orris root

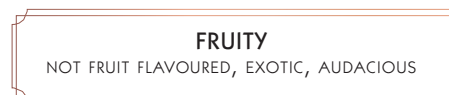
USA

- ◇ Far North Gustaf Navy Strength Gin, 57% 28
cucumber, fennel seed, thyme



AUSTRALIA

- ◇ Ester Strong Gin, 57% 28
finger lime, lemon myrtle, macadamia



AUSTRALIA

- ◇ Archie Rose Distillers Strength Gin, 52.4% 32
fresh pear, honey, elderflower

BARREL-RESTED

When a gin has been stored in a wooden cask for a period of time, imparting some of the colour and character of said wood, it is classified as a barrel-rested gin. A sub-category that has boomed in recent years but has historical precedents. Once upon a time, all gins would have been stored and transported in a barrel!

CITRUS

BRIGHT, ZINGY, REFRESHING

- AUSTRALIA**
- ◇ Four Pillars Chardonnay Barrel Gin, 43.8% 24
fresh orange, candied ginger, coriander
 - Four Pillars Sherry Cask Gin, 43.8% 24
cassia, star anise, lavender
 - Manly Spirits Barrel Aged Gin, 45% 32
malted barley, sea lettuce, finger lime

COLOMBIA

- Dictador Treasure Gin, 43% 24
limon mandarina peel, lemon peel, juniper

ENGLAND

- ◇ Henstone Rosè Gin, 44.9% 26
angels wreath, sweet orange peel, lemon kibble
- ◇ That Boutique-y Double-Barrelled Gin, 46% 36
black pepper, grapefruit, bay leaf

FINLAND

- Kyrö Koskue Barrel-aged Gin, 42.6% 26
birch, meadowsweet, cranberry

USA

- ◇ Battle Standard Barrel Finished Gin, 45% 30
cardamom, coriander, cinnamon
- ◇ No. 209 Sauvignon Blanc Barrel Reserve Gin, 46% 28
bay leaf, bergamot, cassia
- ◇ Vapor Distillery Ginskey Barrel Rested Gin, 47% 28
orange peel, lemon peel, sencha tea
- ◇ Wire Works Special Reserve American Gin, 43.9% 24
cranberry, spruce tip, angelica

WALES

- ◇ Eccentric Limbeck New Western Gin, 45% 28
tarragon, seville orange, orris root

FLORAL

BOUQUET, PERFUMED BLOOMS, PETALS

- CANADA**
- ◇ Wallflower Oaken Gin, 44% 28
cinnamon, lemon peel, lavender

CHINA

- ◇ Peddlers Barrel Aged Gin, 45.7% 28
sichuan pepper, buddha's hand, cubeb

ENGLAND

- Hayman's Family Reserve Gin, 41.3% 26
angelica, cinnamon, coriander
- Hayman's Gently Rested Gin, 41.3% 24
angelica, cinnamon, coriander
- ◇ Juni 93 Cask Aged Gin, 46.5% 30
coriander, cassia, juniper

USA

- ◇ Dry Fly Barrel Reserve Gin, 40% 24
mint, apple, lavender
- ◇ Prescribed Spirits Barrel Finished Gin, 42% 24
cardamom, bergamot, cassia
- ◇ Swallowtail Single-Barreled Gin, 44% 22
lavender, cardamom, orange peel

HERBAL

FRESH BUNCH, DRIED LEAVES, VEGETAL

AUSTRALIA

- ◇ Great Southern Ginnifer Gin, 49% 24
meen, peppermint, hot pepper
- ◇ Never Never Dark Series Argo Gin, 42% 34
oolong, pepperberry, cinnamon

ITALY

- ◇ Berto Juniperus Cask Finish Gin, 43% 46
wormwood, rosemary, iris
- ◇ Old Grifu Gin, 42% 26
sage, thyme, elicriso

NETHERLANDS

- ◇ Brouwerij de Molen Gentle Gin, 38% 34
juniper

NEW ZEALAND

- ◇ The Source Pure Cardrona Barrel Aged Gin, 47% 28
rosehip, orange zest, lemon zest

SCOTLAND

- ◇ 57° SKYE Earth & Sea - Banyuls Cask Finish Gin, 43% 22
heather, smoked laminaria, sea kelp

BARREL-RESTED - HERBAL . SPICED

- The Botanist Islay Cask Aged Gin, 46% 32
mugwort, meadowsweet, lady's bedstraw flower
- The Botanist Islay Cask Rested Gin, 46% 26
mugwort, meadowsweet, lady's bedstraw flower

SINGAPORE

- Suuankou Gin, 68% 38
ginseng, red dates, dried longan

SWEDEN

- ◊ Hernö Juniper Cask Gin, 47% 48
black pepper, cassia, vanilla

USA

- Corsair Barrel-Aged Gin, 46% 26
angelica, orris root, orange
- ◊ Golden Moon Cask Reserve Gin, 45% 32
mint, lavender, juniper
- ◊ Smooth Ambler Double Barrel Aged Gin, 45.9% 32
cardamom, caraway, star anise

WALES

- ◊ Da Mhile Oak Aged Gin, 42% 24
seaweed, coriander, mint



AUSTRALIA

- ◊ Four Pillars Whisky Barrel Gin, 56.8% 40
pepperberry, lemon myrtle, lavender
- ◊ Old Young's Old B.A.G. Gin, 42% 32
lemon myrtle, aniseed, orange peel
- Prohibition Shiraz Barrel Aged Gin, 60% 30
blood orange, pink peppercorn, vanilla

CANADA

- ◊ Long Table Barrel Aged Gin, 44% 26
fennel seed, black pepper, coriander
- St. Laurent Vieux Gin, 47% 24
seaweed, grains of paradise, cubeb

COLOMBIA

- Dictador Ortoodoxy Gin, 43% 22
angelica, cinnamon, juniper

ENGLAND

- ◊ Abingdon Port Barrel-Aged Gin, 40% 28
cardamom, fennel, orange
- ◊ Beefeater Burrough's Reserve Oak Rested Gin, 43% 38
bitter almond, coriander, orris root
- Gunroom London Dry Aged Gin, 43% 24
cinnamon, nutmeg, savory
- ◊ Two Birds Sipping Gin, 47.3% 28
orris root, juniper, coriander

FRANCE

- ◊ Audemus Spirits Umami Oak Finished Gin, 42% 24
caper, parmesan cheese, juniper
- Fair Barrel Aged Gin, 42% 24
cardamom, calamus root, angelica

ICELAND

- ◊ An Dulaman Santa Ana Armada Strength Gin, 57% 34
sugar kelp, moss, dulce seaweed

IRELAND

- ◊ Shortcross Small Batch Cask Aged Gin, 44% 30
elderberry, clover, orange peel

NEW ZEALAND

- Dancing Sands Barrel Aged Gin, 48% 26
manuka, almond, liquorice

POLAND

- ◊ Lubuski Aged Gin, 42% 24
licorice, cinnamon, anise

SCOTLAND

- ◊ Firkin Islay Cask Gin, 46% 40
angelica, orris root, coriander

SOUTH AFRICA

- ◊ Ginifer Barrel Aged Chili Infusion Gin, 43% 30
chili pepper, orange rind, juniper
- ◊ Pienaar & Son DAD Barrel Aged Gin, 43% 28
allspice, cassia, ginger

SPAIN

- ◊ Jodhpur Reserve London Dry Gin, 43% 32
coriander, ginger, grapefruit peel
- ◊ LEVEL Reserve Gin, 44% 24
grapefruit, orange blossom, cardamom
- ◊ Palma Oak Aged Spiced Gin, 40.4% 26
vanilla, cinnamon, clove
- Santamania Reserva Gin, 41% 26
liquorice, almonds, wild rosemary

SWEDEN

- ◊ Hernö Sipping Sherry Cask Gin, 46.3% 62
coriander, cassia, indian black pepper
- ◊ Stockholms Bränneri Oak Gin, 45% 34
long pepper, orange peel, juniper

USA

- ◊ Bluecoat Barrel Reserve Dry Gin, 47% 22
lemon peel, angelica, coriander
- ◊ Bourbon Barreled Big Gin, 47% 30
pepperberry, grains of paradise, cassia
- Koval Barreled Gin, 47% 26
rose hip, coriander, angelica
- St. George Dry Rye Reposado Gin, 49.5% 26
black pepper, grapefruit peel, caraway

LUSCIOUS

DELICATE, VELVETY SWEETENED, SCRUMPTIOUS

- AUSTRALIA**
- ◇ Four Pillars Christmas Gin, 43.8% 24
christmas pudding, cinnamon, star anise
- ENGLAND**
- The London No. 1 Sherry Cask Gin, 43% 22
fino sherry, liquorice, bergamot
- ISRAEL**
- ◇ Milk & Honey Levantine Oak Aged Gin, 46% 30
verbena, chamomile, hyssop
- ITALY**
- ◇ Major Riserva Gin, 47% 36
piedmont cherry, peppermint, orange
 - Pigskin Wood Finish Gin, 40% 24
mastic, sage, myrtle
- PHILIPPINES**
- ARC Barrel Reserve Gin, 45% 24
chamomile, pomelo, calamansi
- USA**
- FEW Barrel Gin, 46.5% 26
vanilla, cassia, clove
 - ◇ Griffon Chardonnay Barrel Aged, 45% 28
grains of paradise, meyer lemon, honeydew melon
 - ◇ No.209 Chardonnay Barrel Reserve Gin, 46% 28
cardamom, bergamot, cassia

NUTTY

RUSTIC, WOODY, SAVOURY EDGE

- AUSTRALIA**
- ◇ Süd Polaire Rare Oak Gin, 42% 36
kombu, grapefruit peel, pepperberry
- GERMANY**
- ◇ Monkey 47 Distiller's Cut 2020 Gin, 47% 40
mace, nutmeg, juniper
- ENGLAND**
- ◇ Kipsi Rosé Gin, 41% 22
kentish morello, dark cherry, raspberry

EARTHY

DARK RICH SOIL, TURF, WET LEAVES

- AUSTRALIA**
- ◇ Giniversity Barrel Aged Gin, 49% 26
cardamom, cinnamon, orange peel
- GERMANY**
- Elephant Cask Aged Gin, 52% 36
pimento berry, devil's claw, buchu

LUSCIOUS . NUTTY . EARTHY . GRASSY . FRUITY - BARREL-RESTED

- ◇ Forest Quersus Gin, 42% 32
juniper, tangerine, pear
- ◇ Hoos Reserve Gin, 44.4% 30
pine, fennel seed, cardamom

GRASSY

GREENNESS, TALL GRASS, MEADOW

- USA**
- ◇ No.209 Kosher For Passover Gin, 46% 28
cardamom, bergamot, cassia

FRUITY

NOT FRUIT FLAVOURED, EXOTIC, AUDACIOUS

- ENGLAND**
- ◇ Dancing Cows New Forest Oak-Aged Gin, 43% 28
hops, cardamom, angelica
 - ◇ Hart & Dart Gin, 47% 36
blood orange, wormwood, curry leaf
- GERMANY**
- ◇ Diamond Red Port Cask Finish Gin, 45% 26
juniper
 - Monkey 47 Barrel Cut Gin, 47% 32
pomelo, lemon balm, jasmine
- SCOTLAND**
- ◇ Garden Shed Côte-Rôtie Aged Gin, 43.5% 30
lavender, dandelion root, blackberry

OLD TOM

A style of gin popular in the 18th and 19th century in a time when techniques such as sweetening or the addition of extra botanicals were used to mask the flavour of poorly made (or dangerous) gins. Now it is back in a more craft iteration with variations including different sugars and wood ageing.

CITRUS

BRIGHT, ZINGY, REFRESHING

ENGLAND

Dodd's Old Tom Gin, 46% 22
bay leaf, fennel, cardamom

FLORAL

BOUQUET, PERFUMED BLOOMS, PETALS

CANADA

Cirka Gin375 Gin, 40% 28
rose petal, honey, mint

ENGLAND

◇ Hammer & Son Old English Batch No.2 Gin, 44% 28
orange peel, cassia, cinnamon

ITALY

Winestillery Old Tom Gin, 42% 23
menthol, lemon peel, orange peel

SCOTLAND

◇ Crabbie's 1891 Old Tom Gin, 43% 24
orange peel, coriander, angelica

WALES

◇ Eccentric Young Tom Gin, 46% 28
fennel seed, sunflower root, star anise

HERBAL

FRESH BUNCH, DRIED LEAVES, VEGETAL

ENGLAND

◇ Jensen's Old Tom Gin, 43% 22
lavender, liquorice, orris root

NETHERLANDS

Langley's Old Tom Gin, 45% 22
nutmeg, fennel seed, coriander

SCOTLAND

Porter's Tropical Old Tom Gin, 40% 28
guava, passion fruit, white tea

◇ Tanqueray Old Tom Gin, 47.3% 28
angelica, coriander, liquorice

SPICED

PEPPERS, BAKING SPICES, FRAGRANT

AUSTRALIA

◇ Ester Old Tom Gin, 44% 24
lemon verbena, lemon myrtle, jasmine

◇ Four Pillars Rare Old Tom Gin, 41.8% 26
lemon myrtle, orange, cardamom

CANADA

◇ Endeavour Old Tom Gin, 45% 26
mint, orange blossom, mulberry

FRANCE

Citadelle No Mistake Old Tom Gin, 46% 24
cinnamon, fennel seed, cardamom

ICELAND

◇ Himbrimi Old Tom Gin, 40% 32
arctic thyme, honey, lemon peel

USA

◇ Greenhook Ginsmiths Old Tom Gin, 50.1% 26
cardamom, mace, coriander

◇ Valentine Liberator Old Tom Gin, 45.2% 26
black pepper, sweet red pepper, pimento

LUSCIOUS

DELICATE, VELVETY SWEETENED, SCRUMPTIOUS

ENGLAND

◇ City of London Old Tom Gin, 43.3% 26
juniper, coriander, angelica

◇ Gin Lane 1751 Old Tom Gin, 40% 26
star anise, coriander, angelica

Hayman's Old Tom Gin, 40% 20
liquorice, coriander, orange peel

◇ That Boutique-y Very Old Tom, 46.1% 38
bitter orange, liquorice, coriander

◇ The Distillery Old Tom Gin, 47% 32
juniper, coriander, angelica

◇ Two Birds Old Tom Gin, 40% 24
liquorice, orris root, coriander

GERMANY

Both's Old Tom Gin, 47% 26
liquorice, nutmeg, citrus peel

ITALY

Del Professore Authentic Crocodile Old Tom Gin, 45% 24
elderflower, pepper, vanilla

JAPAN

Ki No Tou Kyoto Old Tom Gin, 47% 46
black sugar, ginger, red shiso

SCOTLAND

◊ Makar Old Tom Gin, 43% 22
black pepper, liquorice, lemon peel

SWEDEN

◊ Hernö Old Tom Gin, 43% 32
lingonberry, meadowsweet, vanilla

USA

◊ Ebb + Flow Old Tom Gin, 44% 24
elderflower, orange peel, angelica

NUTTY

RUSTIC, WOODY, SAVOURY EDGE

ENGLAND

◊ Sacred Old Tom Gin, 48% 28
liquorice, juniper, orange peel

EARTHY

DARK RICH SOIL, TURF, WET LEAVES

ENGLAND

◊ Hampshire Fine Old Tom Gin, 40% 24
calamus root, liquorice, orange peel

SLOE GIN

Actually a gin liqueur, this is a traditional drink from the English countryside. Made from sloes, the plum-like fruit that grows on blackthorn hedgerows dividing old properties. Simply gin, sloe berries and sugar.

BERRIES

PLUMP, ROUNDNESS, JAMMY

AUSTRALIA

- ◇ McHenry Sloe Gin, 25% 24
sloe berry, quandong, mountain pepper leaf

AUSTRIA

- Leopold Organic Sloe Gin, 27% 34
sloe berry, juniper, lemon peel

ENGLAND

- ◇ Beckett's Sloe Gin, 29% 26
sloe berry, sweet orange peel, mint
- Cremorne Gentleman Badger's Sloe Gin, 26% 22
sloe berry, angelica, bitter orange peel
- ◇ Foxdenton Estate Sloe Gin, 27% 22
sloe berry, lime flower oil, orris root
- ◇ Hadrian's Wall Sloe Gin, 26% 22
sloe berry, chamomile, mint
- Hayman's Sloe Gin, 26% 20
sloe berry, lemon peel, nutmeg
- ◇ Lyme Bay Winery Reserve Liqueur Sloe Gin, 26% 22
sloe berry, lemon peel, angelica
- Plymouth Sloe Gin, 26% 20
sloe berry, sweet orange peel, liquorice
- Sipsmith Sloe Gin, 29% 22
sloe berry, liquorice, coriander
- Warner Edwards Harrington Sloe Gin, 30% 24
sloe berry, black pepper, green cardamom

GERMANY

- Elephant Sloe Gin, 35% 24
sloe berry, devil's claw, buchu
- Monkey 47 Sloe Gin, 29% 24
sloe berry, pomelo, lemon balm

ICELAND

- ◇ Boatyard Sloe Boat Gin, 29.8% 20
sloe berry, sweet gale, orris

NETHERLANDS

- Rutte Sloe Gin, 30% 22
sloe berry, galangal, gentian

SCOTLAND

- ◇ Gordon's Sloe Gin, 26% 20
sloe berry, ginger, orange peel
- ◇ Pickering's Sloe Gin, 30% 22
sloe berry, lime peel, clove

SWEDEN

- ◇ Hernö Sloe Gin, 30% 30
sloe berry, honey, lingonberry

FRUITY

NOT FRUIT FLAVOURED, EXOTIC, AUDACIOUS

ENGLAND

- ◇ Ableforth's Sloe Gin, 33.8% 28
sloe berry, clove, orange peel

GENEVER

Not actually gin! We keep a hefty collection of this because it's important to the history of gin. This mostly Dutch spirit is considered the precursor to what we know as gin. It's kind of like a mix between unaged whisky and gin. It is sweet, and very cereal-like.

CITRUS

BRIGHT, ZINGY, REFRESHING

BELGIUM

- ◇ Belegen Jenever Stokerij Wissels, 38% 22
juniper

NETHERLANDS

- ◇ De Borgen Holland Gin, 40.8% 26
wormwood, star anise, elderflower
- ◇ De Ooievaar Roggenaer Genever, 40% 26
juniper, lemon zest
- ◇ Legner 100% Jenever, 30% 22
juniper, lemon peel, black pepper
- Old Duff Genever, 40% 22
orange peel, star anise, liquorice
- ◇ Onder de Boompjes 100% Maltwine Genever, 40% 22
juniper, mandarin peel
- Rutte Old Tom Genever, 38% 18
wormwood, ginger, orange leaf
- ◇ Van Wees Korenwijn Rembrandt Genever, 40% 22
juniper, coriander, lemon peel

HERBAL

FRESH BUNCH, DRIED LEAVES, VEGETAL

NETHERLANDS

- Bobby's Schiedam Jenever, 38% 22
cubeb, lemongrass, rose hip
- ◇ Bokma 5 Year De Vijf Jaren Genever, 38% 24
clove, star anise, dill
- ◇ Bokma Oude Friesche Genever, 38% 26
clove, star anise, dill
- ◇ Boomsma Jonge Pure Graanjenever, 35% 20
juniper, coriander, lemon peel
- ◇ Floryn Jonge Jenever, 35% 22
ginger, vanilla, pepper
- ◇ Goblet Jonge Graanjenever, 35% 22
juniper, coriander, fennel seed
- ◇ Ketel 1 Jenever, 35% 20
pear, clove, mandarin peel

- ◇ Notaris XO Genever, 35% 28
juniper
- Onder de Boompjes Old Dutch Genever, 38% 20
mandarin peel, juniper
- ◇ Van Wees Loyaal 5 Yr. Zeer Oude Genever, 40% 30
juniper, herb bouquet
- ◇ Van Wees Roggenaer 3 Year Genever, 40% 28
juniper, herb bouquet
- ◇ Wynand Fockink Rogge Jenever, 38% 30
juniper, coriander, star anise
- ◇ Zuidam Young Grain Genever, 35% 22
liquorice, aniseed, juniper

SPICED

PEPPERS, BAKING SPICES, FRAGRANT

BELGIUM

- ◇ Filliers' 38% (5 Year Old) Oude Graanjenever, 38% 36
cardamom, juniper, orange peel
- ◇ Huisjenever & Dreupelkot Korenwijn Genever, 38% 24
juniper

NETHERLANDS

- ◇ Before Gin Genever, 38% 22
cinnamon, aniseed, juniper
- ◇ Bols Jonge Graanjenever, 35% 22
apricot seed, learwyt seed, ginger
- Bols Zeer Oude Genever, 35% 20
pine sap, cumin, juniper
- ◇ By The Dutch Old Genever, 38% 22
lemon peel, coriander, star anise
- ◇ Echte Oude Friesche Genever, 38% 22
juniper
- ◇ Hooghoudt Jonge Dubbele Graan Jenever, 35% 22
wormwood, pepper, orange peel
- ◇ Rutte & Zn Jonge Graanjenever, 35% 22
angelica, coriander, orris root
- ◇ Rutte & Zn Oude 5 Jenever, 38% 22
angelica, coriander, orris root
- ◇ Van Wees Amsterdamsche Oude Genever, 35% 24
juniper, cinnamon, clove

GENEVER - SPICED . LUSCIOUS . NUTTY . EARTHY . GRASSY . BERRIES

- ◇ Verhoeven Jonge Graan Genever, 35% 22
coriander, liquorice, black pepper
- ◇ Zuidam Korenwijn 1 Year Genever, 38% 26
juniper, liquorice, aniseed

USA

- ◇ FEW Publican Genever, 45% 28
coriander, rose hip, lemon peel

LUSCIOUS

DELICATE, VELVETY SWEETENED, SCRUMPTIOUS

BELGIUM

- ◇ Filliers 1997 Vintage Grain Genever, 43% 32
juniper
- ◇ Filliers' 15 Year Old Oude Graanjenever, 38.6% 30
cinnamon, liquorice, mint

NETHERLANDS

- ◇ Blaankenheim & Nolet Oude Jenever, 38% 30
liquorice, star anise, vanilla
- ◇ Bols Corenwyn Genever, 40% 32
juniper, vanilla, clove
- ◇ De Borgen Dutch Cornwyn Genever, 38% 22
caraway, fennel, sweet woodruff
- ◇ Dubbel Gebeidi Zeer Oude Genever, 40% 24
citrus, vanilla, liquorice
- ◇ Onder de Boompjes 10% Genever, 35% 20
vanilla, lavender, angelica
- ◇ Oud Amsterdam Jonge Graan Genever, 35% 22
juniper
- ◇ Van Wees Jonge Graangenever, 35% 22
juniper, coriander, cubeb
- ◇ Zuidam 1 Year Rogge Genever, 35% 22
juniper, liquorice, aniseed
- ◇ Zuidam 3 Year Zeer Oude Genever, 38% 28
juniper, liquorice, aniseed
- ◇ Zuidam 5 Year Zeer Oude Genever, 38% 30
juniper, liquorice, aniseed

USA

- ◇ Chief Gowanus Gin, 44% 22
cluster hops, juniper

NUTTY

RUSTIC, WOODY, SAVOURY EDGE

NETHERLANDS

- ◇ Bols Genever 100% Malt Spirit, 47% 38
juniper
- ◇ Bols Genever Barrel Aged, 43% 28
juniper, herb bouquet
- ◇ Old Duff 100% Malt Wine Genever, 45% 24
juniper, bramling hops
- ◇ Van Kleef Korenwyn Genever, 38% 26
juniper, herb bouquet

- ◇ Van Wees Roggenaer 15 Year Genever, 40% 48
juniper, herb bouquet

EARTHY

DARK RICH SOIL, TURF, WET LEAVES

NETHERLANDS

- ◇ Bols Genever, 42% 20
hops, ginger, coriander
- ◇ Olifant Jonge Graanjenever, 35% 22
juniper, coriander, liquorice
- ◇ Oud Amsterdam Dubbel Gebeide Genever, 41% 22
juniper, star anise, citrus
- ◇ Van Wees 15 Year Zeer Oude Genever, 42% 36
juniper

GRASSY

GREENNESS, TALL GRASS, MEADOW

NETHERLANDS

- ◇ Bols 6 Year Old Corenwyn Genever, 40% 32
coriander, dill, vanilla
- ◇ Hoppe Jonge Jenever, 35% 22
juniper

USA

- ◇ Anchor Genevieve Genever-Style Gin, 47.3% 30
coriander, liquorice, cubeb

BERRIES

PLUMP, ROUNDNESS, JAMMY

NETHERLANDS

- ◇ Rutte Paradyswyn Jenever, 37.9% 36
apple, cherry, coriander
- ◇ Van Wees Bessen Jenever, 20% 22
juniper, blueberry, blackberry

RARE & COLLECTABLE

The liquid history of Gin, in drinkable form! We have scoured the globe to bring you bottles from decades and even generations past, to see how Gin has evolved while remaining true to its heritage. Compare the new with the old—toast to a significant date in your own history. Or, close your eyes and transport yourself to a different age while sipping on these rare treasures.

CANADA

- ◇ Hiram Walker Crystal London Dry Gin (1960), 40%
unknown london dry 80

ENGLAND

- ◇ Booth & Co. Superior Old Tom Gin (1926-36), unknown
unknown old tom 350
- ◇ Booth's High & Dry London Dry Gin (1940), 45%
unknown london dry 180
- ◇ Coates & Co's Plymouth Dry Gin (Early 20th century), 40%
unknown london dry 450
- ◇ Coates & Co.'s Plym-Gin Dry Gin (1930), 44.5%
unknown london dry 300
- ◇ Coates & Co.'s Plym-Gin Dry Gin (1980), 40%
unknown london dry 70
- ◇ Coates & Co. Original Plymouth Dry Gin (1990s), 41.2%
unknown london dry 60
- ◇ Fleischmann's White Tavern Distilled Dry Gin (1930), 37%
unknown london dry 250
- ◇ Glencree Bonding Co.'s Gardiners Finest London Dry Gin (1960s), 43%
unknown london dry 90
- ◇ Gordon's Sloe Gin (1920-1930s), unknown
unknown sloe gin 200
- ◇ Gordon's Special Dry London Gin (1930), 40%
unknown london dry 180
- ◇ Gordon's Dry Gin (Export) (1930s), 43%
unknown london dry 180
- ◇ Gordon's Special Dry London Gin (1950s), 43%
unknown london dry 150
- ◇ Gordon's London Dry Gin (1960s), 40%
ginger, angelica, orange peel london dry 90
- ◇ Gordon's Special Old Tom Gin (1950), unknown
unknown old tom 320
- ◇ Gordon's London Dry Gin (Export) (1970s), 47.3%
unknown london dry 90
- ◇ Gordon's Special Dry London Gin (1980s), 40%
unknown london dry 70
- ◇ James Burrough's Beefeater London Dry Gin (1980s), 40%
unknown london dry 70
- ◇ James Burrough's Beefeater London Dry Gin (1990s), 47%
unknown london dry 80

◇	Justerini & Brooks London Dry Gin (1950s), unknown <i>unknown</i>	london dry	100
◇	J&W Nicholson's Finest London Dry Gin (1910), unknown <i>unknown</i>	london dry	350
◇	J&W Nicholson's Finest London Dry Gin (1970s), 45% <i>unknown</i>	london dry	70
◇	London Stone Finest London Gin (1930), 37% <i>unknown</i>	london dry	180
◇	Seager's Extra Dry Gin (1940s), 40% <i>coriander, angelica, lemon peel</i>	london dry	160
◇	W. & A. Gilbey's London Dry Gin (1980s), 40% <i>unknown</i>	london dry	70
	ITALY		
◇	A.A. Baker's Finest Dry Gin (1960s), 43% <i>unknown</i>	london dry	90
◇	Buton Dry Gin (1950s), 40% <i>unknown</i>	london dry	128
◇	Buton Red Hills London Dry (1970s), 40% <i>juniper</i>	london dry	80
◇	Martini & Rossi "Bosford" Dry Gin (1970s), 43% <i>unknown</i>	london dry	88
	JAPAN		
◇	Ki Noh Bi Gin Cask Aged Kyoto Dry Gin, 48% <i>yuzu, bamboo leaf, green shansho</i>	london dry	128
	NETHERLANDS		
◇	Bols Zeer Oude Genever - Very Old Gin (1880-1910), 44% <i>unknown</i>	genever	450
◇	Pheysey's Gin (1940s), 40% <i>unknown</i>	london dry	148
◇	Wynand Fockink Genever (1900s), 40% <i>juniper, star anise, coriander</i>	genever	238
	SCOTLAND		
◇	Alexander Muir's Ascot Finest London Dry Gin (2000s), 37.5% <i>unknown</i>	london dry	40
◇	Gordon's Special Dry London Gin (2000s), 38% <i>ginger, angelica, orange peel</i>	london dry	42
	USA		
◇	Bell Sec Gin, ME Bellows & Co. (1900-1910), unknown <i>unknown</i>	london dry	380
◇	Continental Distilling Co. Dixie Bell London Dry Gin (1940), 45% <i>unknown</i>	london dry	250
◇	Fleischmann's White Tavern Distilled Dry Gin (1940), 45% <i>unknown</i>	london dry	150



FINE SPIRITS OF THE WORLD

WHISK(E)Y

One of our other great spirituous loves is the world of fine whiskies. At ATLAS, we maintain a rich, respectful selection of Scotch, Irish, Japanese and American whiskies. We are particularly proud to offer a diverse range of single malts from all regions and of a broad range of age statements. From sherry cask finishes to smoke-driven malts, we can propose a whisk(e)y for all palates and occasions. *Sláinte!*

USA, Bourbon

Buffalo Trace Bourbon, 40%	18
Bulleit Bourbon, 45%	18
Elijah Craig Small Batch, 47%	18
Four Roses Small Batch Bourbon, 45%	20
Four Roses Single Barrel Bourbon, 50%	28
High West American Prairie Bourbon, 46%	24
Knob Creek Kentucky Straight Bourbon, 40%	26
Maker's Mark Bourbon, 45%	18
Michter's US*1 Small Batch Bourbon, 45.7%	20
□ Pappy Van Winkle Family Reserve 23 Year Bourbon, 47.8%	550
Wild Turkey Bourbon, 40.5%	18
Woodford Reserve Bourbon, 45.2%	24

USA, Rye

Bulleit Rye Whiskey, 45%	18
High West Double Rye Whisky, 46%	26
Knob Creek Rye Whiskey, 50%	26
Michter's US*1 Single Barrel Rye Whiskey, 42.4%	22
Old Potrero Rye Whiskey, 48.5%	52
Rittenhouse Rye 100 Whiskey, 50%	18
Sazerac 6 Year Old Rye Whiskey, 45%	24
Vulson White Rhino Rye Spirit, 41%	20
Willett 6 Year Single Barrel Cask Strength Rye Whiskey, 58.7%	32
Wild Turkey Straight Rye Whiskey, 40.5%	20

The □ symbol denotes special bottles from the Family Collection.

USA, Other

Balcones Baby Blue Corn Whiskey, 46%	48
Death's Door White Whiskey, 40%	18
High West Campfire Whiskey, 46%	22
Jack Daniel's Tennessee Whiskey, 40%	18
Michter's Small Batch American Whiskey, 41.7%	20
Michter's US*1 Sour Mash, 43%	22
St. George "Baller" Whiskey, 47%	40
Westward Whisky, 45%	22

Canadian Whiskey

Canadian Club, 40%	18
Lot 40 Rye, 43%	24

Irish Whiskey

Jameson Caskmates Stout Edition	24
Jameson Irish Whiskey, 40%	18
Redbreast 12 Year Pot Still Irish Whiskey, 40%	22
Redbreast 15 Year Pot Still Irish Whiskey, 46%	26
Teeling Kyro Rye Gin Cask Finish Irish Whiskey, 46%	26

Japan, Blended Whisky

Hibiki 17 Year, 43%	256
Hibiki 21 Year, 43%	280
Hibiki "Japanese Harmony", 43%	34
Hibiki "Mellow Harmony", 40%	225
□ Hibiki Special Bottle Collection 2012, 21 Year, 43%	350
□ Hibiki Special Bottle Collection 2013 "Aritayaki", 21 Year, 43%	250
□ Hibiki Special Bottle Collection 2013 "Kutaniyaki", 21 Year, 43%	250
□ Hibiki Special Bottle Collection 2015 "Aritayaki", 30 Year, 43%	450
Nikka From The Barrel, 51.4%	24

Japan, Single Malt

Hakushu 12 Year, 43%	56
Hakushu 18 Year, 43%	262
Hakushu Distiller's Reserve, 43%	36
□ Karuizawa "Cask Strength 5th Release", 61%	300
□ Karuizawa "Cask Strength 6th Release", 59.5%	300
□ Karuizawa "Cask Strength 7th Release", 60.5%	300
□ Karuizawa "Cask Strength 8th Release", 60.1%	300
□ Karuizawa "Cask Strength 9th Release", 59.6%	300
□ Karuizawa "Cask Strength 10th Release", 59.7%	300
□ Karuizawa "Cask Strength 11th Release", 59.2%	300
□ Karuizawa "Cask Strength 12th Release", 59.2%	300
□ Karuizawa "Cask Strength 13th Release", 59.6%	300

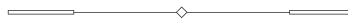
□ Karuizawa “Cask Strength 14th Release”, 59.7%	300
□ Karuizawa “Geisha” Single Cask Sherry Butt 16 Year No. 125, 61.5%	325
□ Karuizawa “Geisha” Single Cask Sherry Butt 17 Year No. 7436, 60.6%	325
□ Karuizawa “Geisha” Single Cask Sherry Butt 26 Year No. 7402, 60.6%	360
□ Karuizawa “Black” Single Cask Sherry Butt 16 Year No. 2332, 58.5%	325
□ Karuizawa “Blue” Single Cask Sherry Butt 16 Year No. 7221, 59%	325
□ Karuizawa “Green” Single Cask Sherry Butt 15 Year No. 2339, 61.1%	325
□ Karuizawa “Pink” Single Cask Sherry Butt 17 Year No. 895, 58.6%	325
□ Karuizawa “Noh” Single Cask Sherry Butt 15 Year No. 2326, 62.2%	345
□ Karuizawa “Noh” Single Cask Sherry Butt 21 Year No. 6149, 63.6%	425
□ Karuizawa “Noh” Single Cask Sherry Butt 22 Year No. 7460, 62.3%	450
Nikka Taketsuru 21 Year Old, 43%	260
Yamazaki 18 Year, 43%	372
Yamazaki 12 Year, 43%	54
Yamazaki Distiller’s Reserve, 43%	38
Japan, Other Whisky	
Nikka Coffey Grain, 45%	26
Nikka Coffey Malt, 45%	30
Suntory “The Chita”, 43%	24
India	
Amrut Fusion, 50%	22
Taiwan	
Kavalan Solist Sherry Cask, 57.8%	44
□ Kavalan “Solist” Single Cask Ex-Bourbon (2008), 57.8%	100
Scotland, Blended Whisky	
□ Ballantine’s 12 Year (1980s), 43%	100
□ Ben Alder Finest Scotch Whisky (1990s), 40%	90
□ Black And White “Buchanan’s Choice” (1960s), 43%	150
□ Black Jack Rare Old Scotch Whisky (1980s), 40%	90
□ Blairmor “Selected Quality” Pure Malt (1980s), 40%	90
□ Buchanan’s Reserve 12 Year (1970s), 43%	100
□ Calvary (1970s), 40%	90
□ Campbeltown Loch (2009), 40%	90
□ Carnaby St. 4 Year (1970s), 43%	90
□ Chequers 12 Year (1980s), 40%	90
Chivas Regal 12 Year, 40%	20
Chivas Regal Royal Salute 21 Year, 40%	60
□ Clan Robertson (1960s), 43%	90
□ Clanroy (1970s), 43%	90
□ Compass Box “Asyla” (First Release), 43%	100
□ Compass Box “Eleuthera” All Malt (First Release), 46%	100
□ Cutty Sark (1980s), 40%	100

□ Dalvegan Old Highland Malt 10 Year (1970s-1980s), 43%	100
□ Defender "From Those Who Build The World", 40%	90
Dewar's 12 Year Blended Scotch, 40%	20
Dewar's 12 Year Blended Scotch, 40%	20
□ Dewar's White Label (1970s), 40%	100
□ Glen Dowan Special Reserve, 40%	90
□ Grand Old Parr 12 Year (1980s), 43%	100
□ Glen Orchy Pure Malt 8 Year (2005), 40%	90
□ Glenfairn Pure Malt 8 Year (1980s), 40%	90
□ Grant's (1980s), 40%	100
□ Highland Fusilier Finest 8 Year (1970s), 40%	90
□ Highland Queen (1970s), 43%	90
□ His Excellency Special Reserve, 43%	90
□ House of Scotland Special Reserve 12 Year (1970s), 43%	90
□ Inverness Cream (1980s), 43%	90
□ Islay Mist 8 Year (1990s), 40%	90
□ Isle Of Skye 8 Year (2009), 40%	90
Johnnie Walker Black Label, 40%	18
Johnnie Walker Blue Label, 40%	50
Johnnie Walker Gold Label, 40%	20
□ Kintore, 43%	90
□ Macleay Duff "Antique" (1980s), 40%	90
□ Macphail's Pure Malt 15 Year (1980s), 40%	100
Monkey Shoulder Blended Malt, 40%	18
Monkey Shoulder Smokey Monkey, 40%	26
□ The Antiquary "Millennium Edition" 21 Year, 40.8%	125
GlenDronach Peated Whisky, 46%	22
 Scotland, Grain Whisky	
□ Black Barrel Single Grain (2000s), 40%	90
 Scotland, Single Malt Whisky	
□ Aberlour-Glenlivet Campbell's Distillery Ltd. 8 Year (1965), 50%	150
Auchentoshan 12 Year, 40%	26
Auchentoshan Three Wood, 43%	28
Ardbeg 10 Year, 46%	22
Balvenie Caribbean Cask 14 Year, 43%	36
Balvenie DoubleWood 12 Year, 40%	28
Balvenie PortWood 21 Year, 40%	92
□ Blairfindy 40 Year "Blairfindy Raw Cask" Blackadder No.4711, 55%	200
Bowmore 12 Year, 40%	22
□ Bowmore "Bicentenary For Fecchio & Frassa", 56.2%	800
□ Bowmore Gold Label OB 12 Year (1980s), 43%	150
□ Bowmore Gold Label "De Luxe" OB (1980s), 43%	150
Bruichladdich The Classic Laddie, 50%	24

Caol Ila 12 Year Old Islay Malt, 43%	25
□ Clynelish-Brora 12 Year Ainslie & Heilbron Ltd., 43%	250
□ Dalmore 8 Year Black Label (1970s), 43%	250
Dalwhinnie 15 Year Single Malt, 43%	28
□ Dufftown 13 Year James Macarthur's Reserve, 59.6%	100
□ Glen Avon 5 Year Fine & Old, 40%	100
□ Glen Grant 10 Year (1958), 45%	250
□ Glendronach 19 Year "The Birds Series" (1990), 43%	390
□ Glenfiddich 8 Year "Straight Malt" (1960s), 43%	300
Glenfiddich 12 Year, 40%	28
Glenfiddich 15 Year Solera Reserva, 40%	32
Glenfiddich Ancient Reserve 18 Year, 40%	46
Glenfiddich 21 Year, 40%	76
Glenlivet 12 Year, 40%	22
Glenlivet 18 Year, 43%	38
□ Glenlivet "Special Export Reserve" George & J.G. Smith Ltd, 43%	250
□ Glenkeith-Glenlivet 12 Year "The Flower Series" Duthie for Samaroli (1969), 46%	250
□ Glenmorangie "Pure Old" Sherry Cask Finish (1963), 43%	550
□ Glenmorangie Single Barrel Vintage Cask (1972), 46%	265
Glenmorangie Quinta Ruban, 46%	28
□ Highland Park 12 Year "From The Islands Of Orkney", 43%	200
Highland Park 12 Year, 43%	26
Highland Park 18 Year, 43%	46
□ Inchgower "From The House Of Bells" 12 Year, 43%	150
Lagavulin 16 Year, 43%	32
Laphroaig 10 Year, 40%	22
□ Laphroaig 15 Year (2005), 43%	175
□ Longmorn 16 Year Natural Cask Strength, 58.5%	350
□ Macallan 8 Year (1970s), 43%	250
□ Macallan 10 Year (1970s), 43%	225
□ Macallan 12 Year (1970s), 43%	200
Macallan 12 Year, 43%	28
□ Macallan 25 Year "Anniversary Malt Series" (1991), 43%	750
□ Macallan 12 Year "Official Whisky Of Bicentenary Of French Revolution" (1989), 43%	275
□ Macallan "Special Reserve" 1st Edition Label (1985), 43%	700
□ Macallan Vintage 18 Year (1956), 46%	700
□ Macallan Vintage 18 Year (1957), 46%	700
□ Macallan Vintage 18 Year (1958), 46%	700
□ Macallan Vintage 18 Year (1959), 46%	700
□ Macallan Vintage 18 Year (1960), 46%	700
□ Macallan Vintage 18 Year (1961), 46%	600
□ Macallan Vintage 18 Year (1962), 46%	600
□ Macallan Vintage 18 Year (1963), 43%	600
□ Macallan Vintage 18 Year (1964), 43%	600
□ Macallan Vintage 18 Year (1965), 43%	550

□ Macallan Vintage 18 Year (1966), 43%	550
□ Macallan Vintage 18 Year (1967), 43%	550
□ Macallan Vintage 18 Year (1968), 43%	550
□ Macallan Vintage 18 Year (1969), 43%	550
□ Macallan Vintage 18 Year (1970), 43%	550
□ Macallan Vintage 18 Year (1971), 43%	550
□ Macallan Vintage 18 Year (1972), 43%	525
□ Macallan Vintage 18 Year (1973), 43%	525
□ Macallan Vintage 18 Year (1974), 43%	525
□ Macallan Vintage 18 Year (1975), 43%	525
□ Macallan Vintage 18 Year (1976), 43%	475
□ Macallan Vintage 18 Year (1977), 43%	475
□ Macallan Vintage 18 Year (1978), 43%	450
□ Macallan Vintage 18 Year (1979), 43%	450
□ Macallan Vintage 18 Year (1980), 43%	450
□ Macallan Vintage 18 Year (1981), 43%	375
□ Macallan Vintage 18 Year (1982), 43%	375
□ Macallan Vintage 18 Year (1984), 43%	375
□ Macallan Vintage 18 Year (1985), 43%	375
□ Macallan Vintage 18 Year (1986), 43%	375
□ Millburn 11 Year "The Flower Series" Duthie For Samaroli (1970s), 46%	200
Oban 14 Year, 43%	26
Old Pulteney 12 Year Old, 46%	28
Port Charlotte 10 Year Islay Whisky, 50%	28
□ Springbank 5 Year "Black Label" (1970s), 43%	300
□ Springbank 15 Year "Black Label" (1970s), 46%	300
□ Strathisla 37 Year "Licensed Bottling" Gordon & MacPhail (2011), 43%	400
□ Strathisla-Glenlivet 15 Year (Bottled For Pinerolo Italy), 40%	250
Talisker 10 Year, 45.8%	20
□ Talisker 30 Years Old (1953), 40%	550
□ Teaninich 22 Years "The Bouquet Series" Samaroli (1959), 46%	300

BRANDY



Grape-based

L'Encantada 25 Year Old Armagnac, France, 49.5%	30
Cardenal Mendoza Brandy de Jerez, Spain, 40%	20
Baron Otard XO Cognac, France, 40%	54
Delamain Pale & Dry Cognac, France, 25%	40
□ Hennessy VSOP Cognac (1960s), France, 42%	187
□ Hennessy XO Cognac (1970s), France, 40%	230
Hine Cigar Reserve Cognac, France, 40%	50
Martell Cordon Bleu Cognac, France, 40%	60
Martell VOP, France, 40%	25

□ Martell VOP “3 Stars” Cognac (1960s), France, 40%	250
Ferrand 1840 Cognac, France, 45%	18
Ferrand Abel 45 Year Cognac, France, 40%	80
Ferrand Réserve 20 Year Cognac, France, 40%	32
□ Remy Martin Fine Champagne VSOP Cognac (1960s), France, 40%	225
□ Remy Martin Louis XIII Cognac (1980s), France, 40%	450
Remy Martin VSOP Cognac, France, 40%	18
Cocchi Grappa, Italy, 40%	18
Cocchi Grappa Dorée, Italy, 40%	20
BarSol Pisco, Peru, 41.3%	18
 Other Fruit-based	
Laird’s 100 Proof Straight Applejack, USA, 40%	22
Laird’s Jersey Lightning White Apple Brandy, USA, 40%	18
Comte Louise de Lauriton 2004 Domfrontais Calvados, France, 40%	24
Daron Fine Calvados, France, 40%	18
Luxardo Slivovitz Plum Brandy, Italy, 40%	18
St. George Raspberry Eau de Vie Brandy, USA, 40%	20

SUGARCANE



English Heritage

Banks 5 Year Rum, Caribbean, 43%	18
English Harbour 5 Year Old, Antigua, 40%	24
Equiano Light Rum, Barbados, 43%	24
Planteray Pineapple Stiggin’s Fancy Rum, Caribbean, 40%	18
Gosling’s Black Seal Rum, Bermuda, 40%	18
Planteray 3 Stars Rum, Barbados, 41.2%	18
Planteray Barbados 5 Years Rum, 40%	22
Hampden Overproof, Jamaica, 60%	30
Rum Fire, Jamaica, 63%	28
Rum Nation Jamaica White Pot Still, Jamaica, 57%	24
Tiki Lovers White Rum, Caribbean, 50%	24

Spanish Heritage

Caña Brava 7 Year Rum, Panama, 45%	26
Bacardi Reserva Ocho, Puerto Rico, 40%	24
Havana Club 3 Year Rum, Cuba, 40%	18
Havana Club 7 Year Rum, Cuba, 40%	20
El Dorado 12 Year Rum, Guyana, 40%	22
Ron Colón Salvadoreño Rum, El Salvador, 55.5%	24
Ron Zacapa Centenario 23 Rum, Guatemala, 40%	22
Diplomático Ambassador Rum, Venezuela, 47%	58
Diplomático Distillery Collection Barbet Column Stilled, Venezuela, 47%	32

Diplomático Distillery Collection Batch Kettle Still, Venezuela, 47%	32
Diplomático Planas Rum, Venezuela, 47%	18
Diplomático Mantuano Rum, Venezuela, 40%	18
Diplomático Reserva Exclusiva Rum, Venezuela, 40%	20
Matusalem 15 Gran Reserva, Cuba, 40%	24

French Heritage/ Agricole-Style/ Cachaça

Clairin Communal, Haiti, 43%	24
Neisson Le Rhum par Neisson, Martinique, 52.5%	24
Clairin Casimir: Jesse Vida Selection, Haiti, 49.7%	26

AGAVE



Tequila, Mexico

Clase Azul Reposado Tequila, 40%	80
Don Julio Reposado Tequila, 57%	30
Fuenteseca 12 Year Tequila, 45%	70
Los Arcos El Valle Blanco Tequila, 42.5%	20
Patrón Silver Tequila, 40%	20
Patrón El Cielo, 40%	80

Other Agave, Mexico

Del Maguey Vida Mezcal, 42%	18
Del Maguey Chichicapa Mezcal, 46%	26
Del Maguey Crema de Mezcal, 40%	22
Del Maguey Santa Catarina Minas Arroqueno Mezcal, 49%	38
Del Maguey Wild Papalome Mezcal, 48%	36
Los Danzantes Pechuga Mezcal, 48%	28
Lost Explorer Mezcal Espadin, 42%	25
Lost Explorer Mezcal Tobala, 42%	38
Lost Explorer Mezcal Salmiana, 42%	45
Montelobos Joven Mezcal, 43.2%	22

VODKA



Tried and True, France, 40%	18
Belvedere Vodka, Poland, 40%	20
Grey Goose Vodka, France, 40%	22
Discarded Grape Skin Vodka, Scotland, 40%	22
Skyy Vodka, USA, 40%	18

ABSINTHE

Hendrick's Absinthe, Scotland, 48%	26
Tempus Fugit Duplais Swiss Absinthe Blanche, Switzerland, 60%	28

VERMOUTH

Lillet Blanc Vermouth, France, 17%	14
□ Noilly Prat 1930s Dry Vermouth, France, 16%	120
□ Noilly Prat 1970s Extra Dry Vermouth, France, 18%	120
Noilly Prat Dry Vermouth, France, 18%	12
Carpano Antica Formula Vermouth, Italy, 16.5%	16
□ Cinzano 1940s Dry Vermouth, Italy, 16%	120
Cocchi Americano Rosa Vermouth, Italy, 16.5%	14
Cocchi Americano Vermouth, Italy, 16.5%	14
Cocchi di Torino Vermouth, Italy, 16%	14
Mancino Bianco Ambrato Vermouth, Italy, 16%	14
Mancino Rosso Amaranto Vermouth, Italy, 17%	14
Mancino Secco Dry Vermouth, Italy, 18%	14
□ Martini & Rossi 1940s Red Vermouth, Italy, 16%	115
□ Martini & Rossi 1970s Dry White Vermouth, Italy, 18.5%	49
Martini & Rossi 1970s Sweet Vermouth, Italy, 17%	80
Martini Extra Dry Vermouth, Italy, 15%	12
Martini Rosso Vermouth, Italy, 15%	12
Punt e Mes Vermouth, Italy, 16%	12
Cinzano 1757 Extra Dry Vermouth, Italy, 18%	18
Cinzano Extra Dry Vermouth, Italy, 18%	16
Asterly Bros. - Scofield's Dry Vermouth, England, 16%	18

APERITIF

Aperol, Italy, 11%	12
Campari, Italy, 25%	12
□ Campari 1960s, Italy, 25%	72
Bareksten Aquavit, Norway, 40%	22
Linie Aquavit, Norway, 41.5%	22
Bareksten Aquavit, Norway, 43%	25

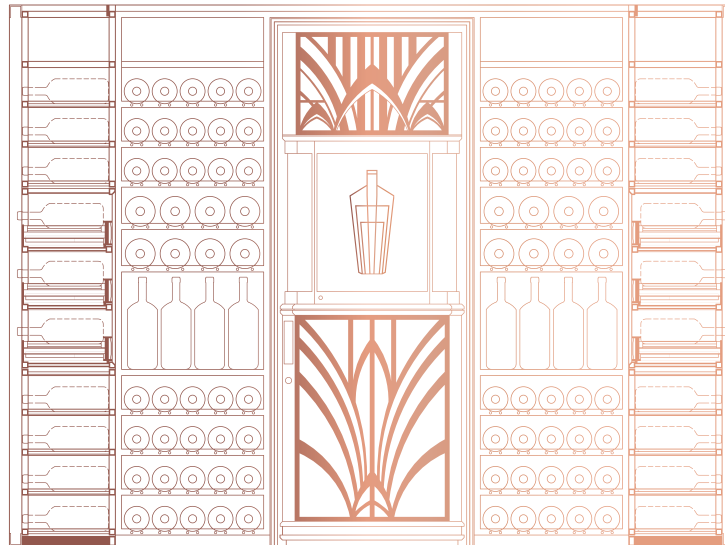
DIGESTIF

Amaro Di Angostura, Trinidad & Tobago, 35%	20
Amaro Montenegro, Italy, 23%	14
Amaro Nonino Quintessentia, Italy, 35%	20
Averna, Italy, 29%	14
Branca Menta, Italy, 28%	14
Braulio, Italy, 35%	16
Cynar, Italy, 16.5%	14
Fernet Branca, Italy, 39%	14
Luxardo Bitter Bianco, Italy, 30%	14
Ramazzotti, Italy, 30%	14
Vecchio Amaro Del Capo, Italy, 35%	18

LIQUEUR

Amaretto Disaronno, Italy, 28%	16
Benedictine, France, 40%	16
□ Benedictine 1970s, France, 35%	34
Chartreuse Green, France, 47%	20
Chartreuse Yellow, France, 40%	20
Chartreuse V.E.P. Yellow, France, 42%	30
Chartreuse V.E.P. Green, France, 54%	30
Cointreau, France, 40%	16
Cointreau 1970s, France, 40%	50
□ Drambuie 1970s, Scotland, 40%	34
Grand Marnier, France, 40%	18
Galliano, Italy, 42.3%	16
Luxardo Albicocca Apricot, Italy, 30%	16
Luxardo Limoncello, Italy, 27%	16
Luxardo Maraschino Liqueur, Italy, 32%	15
Luxardo Sambuca Dei Cesari, Italy, 38%	16
Mathilde Cassis Liqueur, France, 16%	16
Vedrenne Cherry Liqueur, France, 15%	16
Vedrenne Crème de Menthe Liqueur, France, 15%	16
Vedrenne Pêche Liqueur, France, 15%	16
Vedrenne Poire Liqueur, France, 18%	16
Picon Biere a L'Orange, France, 18%	16
Pimm's No. 1, England, 25%	16
St. Germain Elderflower Liqueur, France, 20%	16
□ Vintage Orange Curaçao 1930s, France, 25%	160

THE ATLAS CHAMPAGNE COLLECTION



Champagne; a sparkling wine produced adhering to strict regulations and exclusively from the regions of Champagne, France. The Comité Interprofessionnel du vin de Champagne (CIVC) is the governing body for all the wines from Champagne. They have developed a comprehensive set of rules for the production of Champagne, which are regarded as the strictest in the world - thus, every bottle of Champagne is of a guaranteed quality and a specific profile that is unlike any other sparkling wine in the world.



Champagne is celebrated for its versatility and its romantic, rich culture. Extensively documented, Champagne's history is both wide and deep. Having a broad spectrum of styles which are made to be enjoyed in different occasions, Champagne has been present at the world's parties for hundreds of years.

We hear stories of Champagne in war time, on imperial dining tables and being the favoured tittle of the great figures of history. Perhaps it is the tiny bubbles percolating in a golden liquid that cause us to embrace all of the emotions ensconced in Champagne: love, hatred, happiness and tears.

Now is your time to enjoy the finest Champagnes the world has to offer. The ATLAS Champagne Collection is one of the largest in Asia. It has been carefully curated to bring out these sensations and stories through the finest wines from the Champagne region. Whether it is a special occasion or not, we are delighted to offer you our very favourite Champagnes to celebrate the joys in life.

The ATLAS Champagne Collection is arranged into three categories:

La Sélection: featuring beautiful Champagnes for all moments.

Le Terroir: a dedication and celebration of the 17 Grand Crus of Champagne, the single village releases that are at the heart of Champagne culture.

La Prestige: an extraordinary list of the most renowned Champagnes drawn from the Parkview Family Cellar and from the most iconic Champagne houses.

Go ahead and explore the remarkable world of Champagne. Our wine team stands ready to assist you in your journey.

Jack Cheung, *Family Sommelier*

Machelo Tagala, *Sommelier*

The ATLAS Champagne Collection On Date of Printing
230

LA SÉLECTION

- Négociant-Manipulant
- Récoltant-Manipulant
- Coopérative de Manipulation
- Magnums

LE TERROIR

Montagne De Reims

- Ambonnay
- Beaumont-sur-Vesle
- Bouzy
- Louvois
- Mailly
- Puisieulx
- Sillery
- Verzenay
- Verzy

Vallée De La Marne

- Aÿ
- Tours-sur-Marne

Côte Des Blancs

- Avize
- Chouilly
- Cramant
- Le Mesnil-Sur-Oger
- Oger
- Oiry

Mixed Grand Cru Villages

LA PRESTIGE

- Piper-Heidsieck
- Charles Heidsieck
- Krug
- Salon
- Dom Pérignon
- Pol Roger
- Louis Roederer
- Bollinger
- Taittinger
- Deutz
- G.H. Mumm
- Shipwreck Champagne

RARE & SPECIAL BOTTLES

The ATLAS Champagne Collection includes some genuine treasures, of which only one or two bottles are available. Because of the extraordinarily rare nature of these bottles, they will be crossed off once enjoyed by our guests. If your preferred Champagne is not currently available, please accept our most sincere apologies! We would be delighted to recommend a suitable alternative.

The □ symbol denotes special bottles from the Family Collection.

LA SÉLECTION

In La Sélection, we celebrate great diversity of Champagne, bringing you a wealth of styles to suit your mood and the occasion. There are famous Champagne houses represented here, with both vintage and non-vintage champagnes for you to choose from.

NÉGOCIANT-MANIPULANT



Bauget-Jouette La Carte Blanche Brut	NV	140
Chapuy Brut Tradition	NV	165
Telmont Réserve Brut	NV	160
Telmont Réserve Rosé	NV	205
Henriot Rosé	NV	190
Henriot Brut Souverain Magnum	NV	295
Pascal Douquet "Anthocyanes" 1er Cru Brut Rosé	NV	240
Boizel Rosé	NV	250
Ruinart Brut	NV	220
Ruinart Rosé	NV	330
Ruinart Blanc de Blanc	NV	320
Bruno Paillard Première Cuvée Extra Brut	NV	175
AR Lenoble Brut Intense "Mag 18"	NV	180
AR Lenoble Premier Cru Blanc de Noirs	2013	305
Cattier Brut Nature Premier Cru	NV	180
Laurent-Perrier Brut "La Cuvee"	NV	185
Laurent-Perrier Cuvée Rosé Brut	NV	350
Drappier Brut Nature Zero Dosage Blanc de Noirs (d: 2016-09)	NV	180
Drappier Rosé Brut Nature (d: 2016-08)	NV	210
Drappier "Quattor" Blanc de Blancs	NV	280
Drappier "Grande Sendree" Rose	2010	420

Henri Giraud Esprit Nature "G"	NV	225
Gosset "15 ans de Cave a Minima"	NV	400
Bérèche et Fils Brut Reserve (d: 2023-05)	NV	240
Dehours et Fils "Terre de Meunier" Extra Brut	NV	240
Dehours et Fils Brut	2015	270
Emmanuel Brochet Selected 1er Cru Pierry	NV	355
Emmanuel Brochet Selected Rose	2018	435
Lanson "Extra Age"	NV	270
Jacquesson "Cuvee n 746" - Extra Brut	NV	270
Jacquesson "Cuvee n 741 D.T." Extra Brut	NV	390
Laherte Frères "Les Empreintes" Extra-Brut (d: 2012-03)	NV	340
Laherte Frères "Les 7" Extra-Brut (d: 2012-03)	NV	450
Clandestin Les Semblables Brut Nature Austral	2019	345
Clandestin "Les Grandes Lignes" Brut Nature	2019	375
Vouette & Sorbée "Cuvee Fidèle" Extra Brut	2019	357
Vouette & Sorbée "Extrait" Brut Nature	2013	610
Vilmart & Cie "Coeur de Cuvée" Premier Cru (d: 2014-03)	2007	450
Andre Heucq H60	NV	535
Barons de Rothschild Blanc de Blancs	2006	600
Veuve Clicquot La Grande Dame	2015	650
Boërl & Kroff "B de Boërl & Kroff" (d: 2011-11)	2000	1000
Fleur De Miraval Exclusivement Rose 1	NV	895
Fleur De Miraval Exclusivement Rose 2	NV	895
Fleur De Miraval Exclusivement Rose 3	NV	895

RÉCOLTANT-MANIPULANT



Chartogne-Taillet Cuvée "Sainte Anne" Brut	NV	170
Chartogne-Taillet "Saint Thierry" Extra-Brut	NV	370
Chartogne-Taillet "Chemin de Reims" Blanc de Blancs Extra-Brut	2010	310
NV Perrot-Batteux Rose	NV	175
Tarlant 'Zero' Brut Nature	NV	255
Tarlant "Cuvée Louis" Extra-Brut (d: 2014-07)	NV	290
Tarlant "BAM!" Brut Nature (d: 2014-11-11)	NV	440
Jean-François Launay "Grain de Folie" Blanc de Blancs	NV	220
Geoffroy Rosé de Saignée 1er Cru Brut	NV	225
Dhondt-Grellet Brut Dans un Premier Temps	NV	235
Agrapart Les 7 Crus Brut	NV	240
Egly-Ouriet "Les Premices" Brut	NV	240
Roger Coulon "L'Homme" Premier Cru Extra Brut	NV	250
Roger Coulon 'Roselie' Rose de Saignée Premier Cru Extra Brut	NV	330
Franck Pascal "Reliance" Brut Nature (d: 2014-10-02)	NV	260
Larmandier Barnier Longitude Blanc de Blancs 1er Cru	NV	305
Larmandier Barnier Terres de Vertus Non Dose Blanc de Blancs 1er Cru	2017	405
Benoît Déhu Les Rue des Noyers V18	NV	395
Marie-Courtin "Efflorescence" Blanc de Noirs Extra Brut	NV	400
□ David Léclapart "L'Apôtre" Premier Cru Blanc de Blancs Pas Dosé (v: 2009)	NV	650
□ David Léclapart "L'Artiste" Premier Cru Blanc de Blancs Pas Dosé (v: 2010)	NV	650
□ David Léclapart "L'Astre" Premier Cru Blanc de Noirs Pas Dosé (v: 2011)	NV	650
Doyard "La Libertine" Doux	NV	580

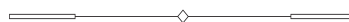
L. Aubry Fils "Le Nombre d'Or Campaniae Veteres Vites"	2013	240
Nominé-Renard "Special Club"	2011	260
Roses de Jean Côte de Val Vilaine" Blanc de Noirs	2020	705
Ulysse Collin "Le Jardin d'Ulysse" Extra-Brut 60 Mois V15	NV	1170
Ulysse Collin "Les Roises" Blanc de Blancs Extra-Brut 60 Mois V16	NV	2200
Ulysse Collin "Les Maillons" Rose de Saignee Extra Brut	NV	1950
Jacques Selosse Brut Rose	NV	2700

COOPÉRATIVE DE MANIPULATION



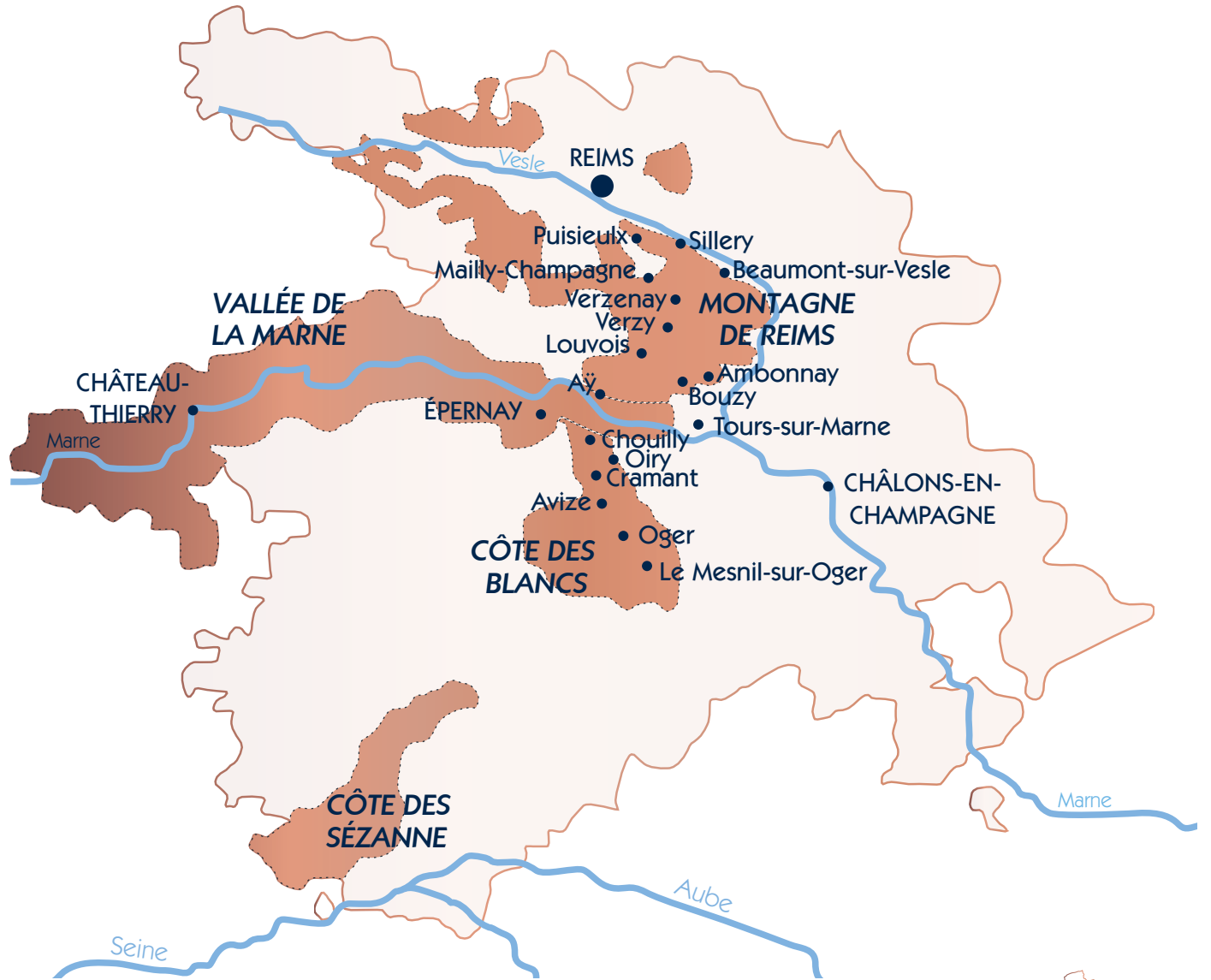
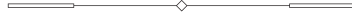
Nicolas Feuillatte "Grande Réserve" Brut	NV	170
Chavost Blanc de Meunier Brut Nature	NV	180

MAGNUMS

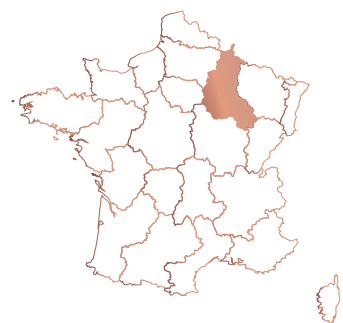


Henriot Brut Souverain Magnum	NV	295
Les Mesnil Blanc de Blancs Grand Cru Brut Magnum	NV	545
Agrapart "Terroirs" Grand Cru Blanc de Blancs Extra Brut Magnum	NV	690
Dom Pérignon Magnum	2010	2000
Henri Giraud "Argonne" Grand Cru Magnum	2015	2800
Pol Roger "Cuvée Sir Winston Churchill" Magnum	2013	2000
Louis Roederer "Cristal" Magnum	2008	3200

CHAMPAGNE



 Grand Cru Vineyards



LE TERROIR

In this section, we adhere to the "échelle des crus" system that was developed in the mid-1900s. This system divides the villages of Champagne into three levels of quality. From the highest tier, we present the 17 Grand Crus here, which make up just nine percent of the villages in the Champagne region.

MONTAGNE DE REIMS

AMBONNAY

Paul Déthune "Cuvée Prestige - Princesse des Thunes" Grand Cru (d: 2013-10)	NV	240
Paul Déthune "Cuvée à l'Ancienne" Grand Cru (d: 2012-01)	NV	500
Eric Rodez Grand Cru Blanc de Noirs	NV	270
Eric Rodez Grand Cru Rosé	NV	300
H. Billiot & Fils "Cuvée Laetitia" Grand Cru (d: 2013-10-21)	NV	370
Marguet Père & Fils "Yuman 21" Grand Cru Brut Nature	NV	245
Marguet Père & Fils "Shaman 21" Grand Cru Brut Nature	NV	265
Marguet Père & Fils "Shaman 21" Rose Grand Cru Brut Nature	NV	265
Marguet Père & Fils "La Grande Ruelle" Grand Cru Blanc de Noirs Extra-Brut (d: 2016-03)	2011	600
Marguet Père & Fils "Le Parc" Grand Cru Blanc de Blancs Extra-Brut (d: 2016-03)	2011	600
Marguet Père & Fils "Les Bermonts" Grand Cru Blanc de Blancs Extra-Brut (d: 2014-12)	2010	600
Marguet Père & Fils "Les Crayères" Grand Cru Extra-Brut (d: 2014-07)	2009	600
Bérèche et Fils Ambonnay Grand Cru Extra Brut (d: 2022-07)	2017	615
Egly-Ouriet "Les Crayeres" Grand Cru Blanc de Noirs	NV	890
BEAUMONT-SUR-VESLE		
Paul Sadi "Clos Virgile" Grand Cru	2012	290

BOUZY

Pierre Paillard "Les Maillerettes" Grand Cru Blanc de Noirs Extra-Brut (d: 2016-04)	2010	300
Pierre Paillard "Les Mottelettes" Grand Cru Blanc de Blancs Extra-Brut (d: 2016-03)	2010	300
Camille Savès "Cuvée Anaïs Jolicoeur" Grand Cru	2012	350
Camille Savès "Les Loges" Grand Cru Blanc de Noirs	NV	400
Brice "Bouzy Millésime" Grand Cru	2008	400
Benoît Lahaye "Le Jardin de la Grosse Pierre" Grand Cru Brut Nature (d: 2016-02)	2011	500

LOUVOIS

Guy de Chassey "Cuvée Antide" Grand Cru	NV	300
---	----	-----

MAILLY

Ernest Remy Grand Cru Blanc de Noirs	NV	300
Ernest Remy Grand Cru Blanc de Noirs Demi-Sec	NV	300
Champagne Mailly "L'Intemporelle" Grand Cru	2007	450
Bérèche et Fils Mailly Grand Cru Extra Brut (d: 2022-07)	2017	615

PUISIEULX

François Secondé "Les Petites Vignes" Grand Cru	NV	350
---	----	-----

SILLERY

François Secondé "La Loge" Grand Cru Blanc de Noirs	NV	270
---	----	-----

VERZENAY

Godmé Père et Fils Brut Millésimé Grand Cru	1999	350
---	------	-----

VERZY

Louis de Sacy "Grand Soir" Grand Cru	2003	400
Adrien Renoir "Le Terroir" Grand Cru	NV	235

VALLÉE DE LA MARNE



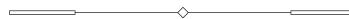
Aÿ

Jacquesson "Vauzelle Terme" Grand Cru Blanc de Noirs Extra-Brut (d: 2013-02-13)	2004	800
□ Henri Giraud D'AY Grand Cru Blanc de Blancs	2004	1400
Henri Giraud MV18 Grand Cru	NV	610
Henri Giraud "Argonne" Grand Cru	2004	2400
Henri Giraud "Argonne" Grand Cru Magnum	2015	2800

TOURS-SUR-MARNE

Lamiable "Cuvée Heliades" Grand Cru Rosé	NV	350
Lamiable "Les Meslaines" Grand Cru Blanc de Noirs	2009	350
Lamiable "Cuvée Pheerie" Grand Cru Blanc de Blancs	2008	400
Harlin Pere et Fils "Cuvée Ephémère" Blanc de Noirs Extra-Brut (d: 2016-04)	2010	400

CÔTE DES BLANCS



AVIZE

Agrapart "Terroirs" Grand Cru Blanc de Blancs Extra Brut	NV	290
Agrapart "Terroirs" Grand Cru Blanc de Blancs Extra Brut Magnum	NV	690
Agrapart "Complantee" Grand Cru Extra Brut	NV	330
Agrapart "Mineral" Grand Cru Blanc de Blancs Extra Brut	2017	440
Pierre Callot "Clos Jacquin" Grand Cru Blanc de Blancs	NV	370
Jacquesson "Champ Caïn" Grand Cru Blanc de Blancs Extra-Brut (d: 2013-02-27)	2004	900
Jacquesson "Champ Caïn" Grand Cru Blanc de Blancs Extra-Brut (d: 2022-05)	2013	710
Franck Bonville "Camille Bonville" Grand Cru Blanc de Blancs	NV	240
Franck Bonville Grand Cru Rose	NV	260
La Rogerie Heroine Grand Cru Blanc de Blancs Extra Brut Millesime	2015	305

CHOUILLY

R&L Legras "Saint-Vincent" Grand Cru Blanc de Blancs	2000	350
Veuve J. Lanaud "Les Prêtrosses" Grand Cru Blanc de Blancs (d: 2016-07-30)	2008	360
Lenoble "Les Aventures" Grand Cru Blanc de Blancs	NV	380
AR Lenoble Grand Cru Blanc de Blancs	2012	350

CRAMANT

Bonnaire "Prestige" Grand Cru Blanc de Blancs	NV	350
Bérèche et Fils Cramant Grand Cru Extra Brut (d: 2022-07)	2017	615
Larmandier Bernier Vieilles Vignes du Levant Blanc de Blancs Grand Cru	2013	540

LE MESNIL-SUR-OGER

Les Mesnil Blanc de Blancs Grand Cru Brut	NV	230
Les Mesnil Blanc de Blancs Grand Cru Brut Magnum	NV	545
Pierre Moncuit "Nicole Moncuit" Vieille Vignes Grand Cru Blanc de Blancs	2004	320
Pierre Moncuit "Nicole Moncuit" Vieille Vignes Grand Cru Blanc de Blancs	2005	340
Philippe Gonet Grand Cru Blanc de Blancs	2009	260
Pascal Doquet "Cœur de Terroir" Grand Cru Brut	2009	475

OGER

Franck Bonville "Les Belles Voyes" Grand Cru Blanc de Blancs	NV	350
□ Claude Cazals "Clos Cazals" Grand Cru Blanc de Blancs Extra-Brut	2002	450
Chapuy Cuveé Prestige "Livrée Noire" Grand Cru	2012	250
Chapuy Grand Cru Blanc de Blancs Brut Reserve	NV	175

OIRY

Suenen Grand Cru Blanc de Blancs Extra-Brut	NV	380
---	----	-----

MIXED GRAND CRU VILLAGES

Vergnon's "Eloquence" Grand Cru Extra Brut Blanc de Blancs	NV	185
Duval Leroy Grand Cru Blanc de Blancs Brut Reserve	NV	195
Delamotte Blanc de Blancs	NV	200
Delamotte Blanc de Blancs	2018	380
Delamotte "Collection" Blanc de Blancs	2002	750
Henriot Cuvee "Hemera" Grand Cru	2006	390
Pierre Peters "Cuvee de Reserve" Grand Cru Blanc de Blancs	NV	235
Pierre Péters Grand Cru Blanc de Blancs Extra-Brut	NV	255
Pierre Péters "Réserve Oubliée" Grand Cru Blanc de Blancs	NV	290
Petit et Bajan "Nuit Blanche" Grand Cru Blanc de Blancs (d: 2017-05-03)	NV	270
Petit et Bajan "Nymphaea" Grand Cru Rosé (d: 2017-05-03)	NV	300
Benoît Lahaye "Late Disgorgement" Grand Cru Extra Brut (d: 2016-10)	2007	270
Pascal Doquet "Diapason" Grand Cru Blanc de Blancs Extra Brut	NV	280
Ayala Blanc de Blancs (d: 2015-09)	2008	290
Ayala "Cuvée Perle d'Ayala"	2005	420
Egly-Ouriet Grand Cru Brut	NV	330
Egly-Ouriet "VP" Grand Cru Extra Brut	NV	440
Suennen "C+C" Grand Cru Blanc de Blancs Extra-Brut	NV	380
Suennen Grand Cru Blanc de Blancs Extra-Brut	2009	450
Lombard Grand Cru Brut Nature	2008	405
Bruno Paillard Blanc de Blancs (d: 2013-04)	2004	560

LA PRESTIGE

This section shares our family's philosophy about being a patient and persistent collector of some of the finest things in the world. This value is shared by our family and many of the traditional Champagne families. Here we present truly extraordinary Champagnes from the Parkview Family Cellar and some of the greatest Champagne houses. "Prestige Cuvée" is the word used by the houses to describe their, and therefore our, best offerings.

PIPER-HEIDSIECK

Credited as a Champagne worthy of a queen, Marie Antoinette was the first brand ambassador of Piper-Heidsieck back in 1785. Cuvée Rare was created in 1885 to celebrate its centennial with a bottle designed by Pierre-Karl Fabergé, star jeweler of Russian Tsar Alexander III. Piper today still gives the same dash of seduction it has since 1785.

Piper-Heidsieck Cuvée Réserve Essentiel ATLAS	NV	205
Piper Heidsieck Millésime	2014	250
Piper-Heidsieck Rare	2006	580

CHARLES HEIDSIECK

In 1851, at the young age of 29, Charles Heidsieck founded the house bearing his own name. Now owned by the EPI group since 2011, the house is gaining its former glory as one of the most highly esteemed champagne houses of the century. Headed by Cellarmaster Cyril Brun, these champagnes are characterized by freshness, power, richness and elegance.

Charles Heidsieck "Brut Réserve" (d: 2016)	NV	210
Charles Heidsieck Millésime	2012	450

KRUG

Behind every precious drop of Krug stands the dream of a visionary. One man who, long before others, understood that the essence of Champagne is pleasure. Over 170 years ago, Joseph Krug broke with convention to follow this vision. In doing so, he created some of most generous expressions of Champagne each year. This tradition continues to this day.

Krug "Grande Cuvée" 171 Ème Édition	MV	745
□ Krug "Clos d'Ambonnay" Grand Cru Blanc de Noirs	1995	7000
□ Krug "Clos d'Ambonnay" Grand Cru Blanc de Noirs	1996	7000
□ Krug "Clos d'Ambonnay" Grand Cru Blanc de Noirs	2000	8000
□ Krug "Clos du Mesnil" Grand Cru Blanc de Blancs	1988	6500
□ Krug "Clos du Mesnil" Grand Cru Blanc de Blancs	1990	4900
□ Krug "Clos du Mesnil" Grand Cru Blanc de Blancs	1992	4500
□ Krug "Clos du Mesnil" Grand Cru Blanc de Blancs	1998	5000

SALON

Salon was created as a private label, from similar beginnings as the more famous Cristal. Since its first vintage in 1905, Salon was shared among private clients and friends of the visionary Eugène Aimé Salon, who believed that the Chardonnay in Le-Mesnil-Sur-Oger could make fine and elegant Champagnes without blending with Pinot Noir and Pinot Meunier. And so the idea of Blanc de Blancs was born.

□ Salon "S" Le Mesnil Grand Cru Blanc de Blancs	1971	9000
Salon "S" Le Mesnil Grand Cru Blanc de Blancs	2013	4100

DOM PÉRIGNON

First released in 1921, during the dawn of the Art Deco era, this Champagne bears the same name as the famous Benedictine monk who arguably created Champagne. One of the first "Cuvée" concepts, it was soon destined to be one of the blue bloods of Champagne.

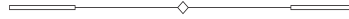
Dom Pérignon	2013	790
□ Dom Pérignon	1947	6000
□ Dom Pérignon	1964	3000
□ Dom Pérignon	1973	2800
□ Dom Pérignon	1976	2400
□ Dom Pérignon "Plénitude Troisième (P3)"	1971	8000
□ Dom Pérignon "Réserve de l'Abbaye"	1990	4000
Dom Pérignon Magnum	2010	2000

POL ROGER

The relationship of Pol Roger and the beloved Sir Winston Churchill was never a commercial or superficial one. Pol Roger had been the favourite champagne of Churchill since 1908 and had even befriended Madame Odette Pol-Roger at a party at the British Embassy in Paris in 1944. In 1984 Pol Roger honored this legendary relationship with the release of the Pinot Noir-dominant Cuvée Sir Winston Churchill.

Pol Roger Brut Reserve	NV	190
Pol Roger Millesime	2015	340
Pol Roger Millesime Blanc de Blancs	2015	400
Pol Roger "Cuvée Sir Winston Churchill"	1979	3500
Pol Roger "Cuvée Sir Winston Churchill"	1988	3000
Pol Roger "Cuvée Sir Winston Churchill" Magnum	2013	2000

LOUIS ROEDERER



Being the favourite house of Tsar Alexander II, Louis Roederer technically created the world's first "Prestige Cuvée" for the paranoid Tsar in 1876. Living in fear of assassination by poisons and bombs, he ordered a Champagne in clear bottles and with a flat bottom, to be made and served for the famous Three Emperors Dinner at Café Anglais in Paris. The first commercially available vintage of Cristal was 1945, many decades after the original release. Yet the famous story of its founding remains part of Champagne's rich history.

Louis Roederer Collection 244 Brut	NV	205
Louis Roederer Philippe Starck Brut Nature	2015	320
Louis Roederer Philippe Starck Brut Nature Rosé	2015	320
Louis Roederer "Cristal"	2014	1100
□ Louis Roederer "Cristal"	1964	8000
□ Louis Roederer "Cristal"	1966	6000
□ Louis Roederer "Cristal"	1976	4900
□ Louis Roederer "Cristal"	1981	3000
Louis Roederer "Cristal" Magnum	2008	3200

BOLLINGER



Known as the famed James Bond Champagne, Bollinger is one of most respected Champagne houses. Bollinger's famous Prestige Cuvée, "La Grande Année" is not the only sought-after label from this house, The "Vieilles Vignes Françaises" made from parcels of ungrafted Pinot Noir and the late disgorgement "Récemment Dégorgé (R.D.)" label are also on the top of connoisseurs' lists.

Bollinger La Grande Année	2007	500
□ Bollinger "Récemment Dégorgé (R.D.)" Extra Brut (Silver Jubilee Edition)	1966	5000
Bollinger "Récemment Dégorgé (R.D.)" Extra Brut	1979	2000
Bollinger "Récemment Dégorgé (R.D.)" Extra Brut	1981	1800
□ Bollinger "Récemment Dégorgé (R.D.)" Extra Brut Magnum	1973	4500
□ Bollinger "Vieilles Vignes Françaises" Blanc de Noirs	1986	6000
□ Bollinger "Vieilles Vignes Françaises" Blanc de Noirs	1989	6000
□ Bollinger "Vieilles Vignes Françaises" Blanc de Noirs	1990	8000

TAITTINGER

The name Taittinger is very much associated with the French political world. Pierre Taittinger, was a powerful politician and a champagne distributor. Pierre restored the House of the Counts of Champagne in Reims during his lifetime, before it was unfortunately destroyed by the Germans during the World War II. The Prestige Cuvée of Taittinger was created to commemorate the powerful reign of the Counts of Champagne during the Medieval Ages.

Taittinger "Prélude"	NV	340
Taittinger "Comte de Champagne" Blanc de Blancs	1982	2900
Taittinger "Comte de Champagne" Blanc de Blancs	1990	2700
Taittinger "Comte de Champagne" Blanc de Blancs	1994	3100
Taittinger "Comte de Champagne" Blanc de Blancs	1995	2400

DEUTZ

Established in 1838, Deutz has a glorious past. Being the favourite Champagne of the English in the 1900s, Deutz exported more than 600,000 bottles to the United Kingdom by then. The company is a living fossil, which is a testament to the glorious history of Champagne as one of the most celebrated drinks in the world. Nowadays Deutz is a rare find, especially its prestigious tribute to the owner, the Cuvée William Deutz.

Deutz Rosé	2014	345
Deutz "Cuvée Amour de Deutz"	1999	600
Deutz "Cuvée Amour de Deutz"	2005	700

G. H. MUMM

Established in 1827, this German family created the famous "Cordon Rouge", a silk ribbon on each bottle of Champagne, which became iconic in the Champagne bottle designs. By 1904, Mumm became the official supplier of Champagne to British royalty. Mumm's prestige cuvée is named after the visionary man who led Champagne Mumm into quality and international prestige in the 20th Century.

G.H. Mumm "Mumm de Cramant" Blanc de Blancs (d: 2014-02)	NV	280
□ G.H. Mumm "Cuvée René Lalou"	1973	1800
G.H. Mumm "Cuvée René Lalou"	1976	1800

SHIPWRECK CHAMPAGNE

On 26 October 1916, amidst the devastation of the World War I, a small Swedish smuggling schooner named "Jönköping" was being quietly loaded with contraband in the city of Gävle in the south of Sweden. Among the packing list was a modest 3,000 bottles of Champagne, tasted, liked and ordered by Tsar Nikolai II, the last Emperor of the Russian Empire. It was Jönköping's tenth smuggling journey of the year. Everything seemed to go smoothly, with none of the crew suspecting that this trip would be their last.

The day was 3 November of 1916, when a German U-22 submarine intercepted this unlucky Jönköping off the Finnish coast and sank it along with its haul of precious contraband. The Champagnes together with the Jönköping, since then, quietly slept at a depth of 64 meters under the sea, for the next 82 years.

Jönköping was salvaged in 1998, its cargo held the 1907 Heidsieck & Co. Monopole "Goût Américain", a Champagne which was also served on the famous Titanic (ironically also sunk in 1912). Fortunately, due to the perfect pressure and temperature deep in the Baltic sea, many of the original 3,000 Champagne bottles made it through this 90-year transcendence of time safely, with corks intact and no leakage.

Heidsieck & Co. Monopole "Goût Américain"	1907	190,700
Heidsieck & Co. Monopole "Goût Américain" Extra Dry	NV	195
Heidsieck & Co. Monopole Blue Top Sec	NV	160
Heidsieck & Co. Monopole Red Top Sec	NV	165
Heidsieck & Co. Monopole Silver Top Sec	NV	180
Heidsieck & Co. Monopole Gold Top Sec	NV	190
Heidsieck & Co. Monopole Cuvée Impératrice	NV	350



WINES OF THE WORLD

Presenting our appreciation for the finer things in life.
A carefully curated collection sourced from all around the globe.

WHITE

SAUVIGNON BLANC / SEMILLON / CHENIN BLANC

Domaine Paul Prieur et Fils Sancerre Loire Valley France • Sauvignon Blanc	2022	120
Gerard Fiou Terroir Silex Sancerre Loire Valley France • Sauvignon Blanc	2023	155
la Perrière Blanc Fumé de Pouilly Loire Valley France • Sauvignon Blanc	2021	115
□ Château Haut-Brion Blanc Pessac-Léognan Bordeaux, France • Semillion, Sauvignon Blanc	1988	2500
□ Château Haut-Brion Blanc Pessac-Léognan Bordeaux, France • Semillion, Sauvignon Blanc	1985	4500
Mount Mary Vineyard Triolet Victoria, Australia • Sauvignon Blanc, Semillon, Muscadelle	2015	245
Te Mata Estate Sauvignon Blanc Hawkes Bay, New Zealand • Sauvignon Blanc	2023	110
Smith & Sheth Cru Wairau, New Zealand • Sauvignon Blanc	2022	120
Raats Original Stellenbosch, South Africa • Chenin Blanc	2022	130

The □ symbol denotes special bottles from the Family Collection.

RIESLING / GRUNER VELTLINER / PINOT BLANC

Markus Huber Gruner Veltliner Obere Steigen Niederoesterreich, Austria • Gruner Veltliner	2022	95
Emrich-Schönleber "Halgans" Trocken Nahe, Germany • Riesling	2021	150
Trimbach Classic Pinot Blanc Alsace, France • Pinot Blanc	2021	90
Domaine Albert Mann Grand Cru "Schlossberg" Alsace, France • Riesling	2018	280

PINOT GRIGIO / ARNEIS / GRECO

Mario Schiopetto Collio DOC Friuli-Venezia, Italy • Pinot Grigio	2020	120
Pietracupa Greco di Tufo DOCG Campania, Italy • Greco	2020	145
Giacomo Ascheri "Cristina Ascheri" Piemonte, Italy • Arneis	2016	100

ALBARIÑO / VIURA

Pazo Señorans Albariño Rías Baixas, Spain • Albariño	2021	120
Bodegas Roda I Blanco Rioja, Spain • Viura, Malvasia de Rioja, Granacha Blanca	2020	330

PETIT ARVINE / KISI

Marie-Therese Chappaz Grain Arvine de Fully Fully, Switzerland • Petit Arvine	2020	320
Schuchmann "Vinoterra" Kisi Khaketi, Georgia • Kisi	2012	145

CHARDONNAY

Domaine Seguinot Bordet Chablis Burgundy, France • Chardonnay	2023	100
Benjamin Leroux Bourgogne Blanc Burgundy, France • Chardonnay	2021	170
Bouchard Père & Fils Bourgogne Chardonnay Reserve Burgundy, France • Chardonnay	2019	105
Domaine Sylvain Pataille Marsannay Blanc Burgundy, France • Chardonnay	2020	260
Domaine De Montille Corton-Charlemagne Grand Cru Burgundy, France • Chardonnay	2019	600
Maison Leroy Bourgogne Blanc Burgundy, France • Chardonnay	2017	650
Jean-Noël Gagnard Bâtard-Montrachet Grand Cru Burgundy, France • Chardonnay	2013	1000
Maison Chanzy Batard-Montrachet Grand Cru Burgundy, France • Chardonnay	2013	1300
Lucien Le Moine Bienvenues-Bâtard-Montrachet Grand Cru Burgundy, France • Chardonnay	2010	1200
Lucien Le Moine Bâtard-Montrachet Grand Cru Burgundy, France • Chardonnay	2008	1300
□ Domaine De La Vougeraie 1er Cru "Les Clos Blanc De Vougeot" Monopole Burgundy, France • Chardonnay	2005	850
□ Domaine De La Vougeraie Grand Cru "Le Charlemagne" Corton-Charlemagne Burgundy, France • Chardonnay	2005	1200
□ Domaine Des Comtes Lafon Montrachet Burgundy, France • Chardonnay	2004	5500
Larry Cherubino Margaret River Chardonnay Margaret River, Australia • Chardonnay	2023	195
Giaconda Estate Chardonnay Victoria, Australia • Chardonnay	2021	820

VIOGNIER / MARSANNE / ROUSANNE

Julien Pilon "Le Bruit des Vagues" Rhône Valley, France • Marsanne, Rousanne	2021	110
V. Guibert De La Vaissière Mas De Daumas Gassac Languedoc-Roussillon, France • Viognier, Petit Manseng	2016	160

SAVAGNIN

Domaine Rolet Père & Fils Arbois Vin Jaune (620ml) Jura, France • Savagnin	2009	150
---	------	-----

ROSÉ



Chateau L'escarelle "Les Deux Anges" Provence, France • Syrah, Grenache, Cinsault	2022	105
--	------	-----

RED

PINOT NOIR

Laculle Frères Côteaux Champenois Bicheret Champagne, France • Pinot Noir	2019	205
Domaine Faiveley Bourgogne Burgundy, France • Pinot Noir	2022	145
Domaine Chapuis Aloxé-Corton 1er Cru Burgundy, France • Pinot Noir	2021	245
Maison Gautheron D'Anost Gevrey-Chambertin "Combes Du Bas" Burgundy, France • Pinot Noir	2020	290
Dominique Laurent Savigny-les-Beaune Vieilles Vignes Burgundy, France • Pinot Noir	2020	280
Maison Leroy Bourgogne Rouge Burgundy, France • Pinot Noir	2017	650
Domaine Thénard Grands Echezeaux Grand Cru Burgundy, France • Pinot Noir	2017	800
Domaine Perrot-Minot Mazoyères-Chambertin Grand Cru Burgundy, France • Pinot Noir	2013	1200
Domaine De Montille Vosne Romanée 1er Cru Aux Malconsorts Burgundy, France • Pinot Noir	2011	1500
□ Nicolas Potel Clos De Vougeot Grand Cru Burgundy, France • Pinot Noir	2005	2100
□ Lucie Et Auguste Lignier Clos De La Roche Grand Cru Burgundy, France • Pinot Noir	2001	2000
□ Domaine Armand Rousseau Père Et Fils Chambertin Grand Cru Burgundy, France • Pinot Noir	2000	7000
□ Domaine Armand Rousseau Père Et Fils Chambertin Grand Cru Burgundy, France • Pinot Noir	1999	7000
Burn Cottage Vineyard Pinot Noir Central Otago, New Zealand • Pinot Noir	2021	220
Felton Road Bannockburn Central Otago, New Zealand • Pinot Noir	2022	215
Waits-Mast Mariah Vineyard Mendocino Ridge, USA • Pinot Noir	2019	185

WINES OF THE WORLD - RED

GAMAY

Jean Foillard Morgon Classique Beaujolais, France . Gamay	2022	110
Domaine de Javerniere Morgon "Cote du Py" Beaujolais, France . Gamay	2018	100

NEBBIOLO

E. Pira & Figli Chiara Boschis "Mosconi" Barolo Piemonte, Italy • Nebbiolo	2018	310
Fantino Cascina Dardi Barolo Bussia Riserva Piemonte, Italy • Nebbiolo	2011	315

CORVINA / PRIMITIVO

Polvanera Gioia Di Colle Primitivo DOC Puglia, Italy • Primitivo	2020	140
Tommasi Amarone Della Valpolicella DOCG Veneto, Italy • Corvina, Rondinella	2019	190
Dal Forno Romano Valpolicella Superiore DOC Veneto, Italy • Corvina, Rondinella, Croatina, Oseleta	2017	370

SANGIOVESE

Vignamaggio Terre Di Prenzano Chianti Classico Tuscany, Italy • Sangiovese	2020	120
Marchesi Antinori Tignanello Toscana IGT Tuscany, Italy • Sangiovese, Cabernet Franc, Cabernet Sauvignon	2019	540
Sasso Al Poggio Super Tuscan Toscana IGT Tuscany, Italy • Sangiovese, Cabernet Sauvignon, Merlot	2018	175
Marchesi Antinori Pian Delle Vigne Brunello Di Montalcino DOCG Tuscany, Italy • Sangiovese	2017	240
Tenuta San Guido Sassicaia Bolgheri DOC Tuscany, Italy • Cabernet Sauvignon, Cabernet Franc	2018	990
Ornellaia Bolgheri Superiore DOC Tuscany, Italy • Cabernet Sauvignon, Merlot, Petit Verdot, Cabernet Franc	2015	990

TEMPRANILLO / PINOTAGE

Groot Constantia Constantia, South Africa • Pinotage	2022	175
El Coto De Imaz Gran Reserva Rioja, Spain • Tempranillo, Graciano	2018	145
R. López De Heredia Viña Tondonia Rioja, Spain • Tempranillo, Garnacho, Mazuelo, Graciano	2011	210

SYRAH / GRENACHE / MOURVEDRE

Paul Jaboulet Aîné Côtes Du Rhône Parallèle 45 Rhône Valley, France • Syrah, Grenache, Mourvèdre	2021	100
Domaine de Marcoux Lirac "La Lorentine" Rhône Valley, France • Grenache, Syrah, Mourvèdre	2021	115
Tardieu-Laurent Cornas Coteaux Rhône Valley, France • Syrah	2009	210
Tardieu-Laurent Châteauneuf-Du-Pape Cuvée Spéciale Rhône Valley, France • Grenache, Syrah, Mourvèdre	2006	295
Domaine Paul Jaboulet Aîné Hermitage La Chapelle 1988 Rhône Valley, France • Syrah	1988	1100
Domaine Clarendon Old Vines Grenache McLaren Vale, Australia • Grenache	2015	145
Powell & Son Barossa Valley, Australia • Shiraz	2019	155
Lethbridge "Que Syrah Syrah" Victoria, Australia • Shiraz	2018	120

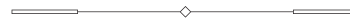
CABERNET SAUVIGNON / MERLOT / MALBEC

Château L'escadre Blaye Tradition (375ml) Bordeaux, France • Merlot, Cabernet Sauvignon, Malbec	2017	50
Pagodes de Cos Saint-Estephe Bordeaux, France • Cabernet Sauvignon, Merlot, Cabernet Franc, Petit Verdot	2020	230
Les Fiefs de Lagrange Saint-Julien Bordeaux, France • Cabernet Sauvignon, Merlot, Petit Verdot	2017	210
Chateau Cantemerle Haut-Medoc Bordeaux, France • Cabernet Sauvignon, Merlot, Petit Verdot, Cabernet Franc	2017	215
Château Pichon Longueville Réserve de la Comtesse, Pauillac Bordeaux, France • Cabernet Sauvignon, Merlot, Cabernet Franc, Petit Verdot	2011	230
Chateau des Eyrins "La Closerie des Eyrins" Margaux Bordeaux, France • Cabernet Sauvignon, Merlot	2018	190
Chateau Plince Pomerol Bordeaux, France • Merlot, Cabernet Franc, Cabernet Sauvignon	2015	235
Couvent des Jacobins "Les Menut des Jacobins" Saint-Emilion Grand Cru Bordeaux, France • Merlot, Cabernet Franc	2020	145
□ Château Mouton Rothschild, Pauillac Bordeaux, France • Cabernet Sauvignon, Merlot	1982	7000
□ Château Mouton Rothschild, Pauillac Bordeaux, France • Cabernet Sauvignon, Merlot	1974	3000
□ Château Lafite Rothschild, Pauillac Bordeaux, France • Cabernet Sauvignon, Merlot	2005	3000
□ Château Lafite Rothschild, Pauillac Bordeaux, France • Cabernet Sauvignon, Merlot	1989	6000
□ Château Lafite Rothschild, Pauillac Bordeaux, France • Cabernet Sauvignon, Merlot	1982	8000
□ Château Margaux Bordeaux, France • Cabernet Sauvignon, Merlot	1982	6000
□ Château Palmer, Margaux Bordeaux, France • Cabernet Sauvignon, Merlot	1961	9000
□ Château Haut-Brion 1er Grand Cru Classé Pessac-Léognan Bordeaux, France • Cabernet Sauvignon, Merlot	1982	6000
□ Château Haut-Brion 1er Grand Cru Classé Pessac-Léognan Bordeaux, France • Cabernet Sauvignon, Merlot	1975	2500
□ Château Haut-Brion 1er Grand Cru Classé Pessac-Léognan Bordeaux, France • Cabernet Sauvignon, Merlot	1964	2500

CABERNET SAUVIGNON / MERLOT / MALBEC CONT'D

□ Château Pétrus, Pomerol Bordeaux, France • Merlot	1989	15000
□ Château Pétrus, Pomerol Bordeaux, France • Merlot	1975	9500
□ Château Cheval Blanc Saint-Émilion 1er Grand Cru Classé Bordeaux, France • Cabernet Franc, Merlot	1990	4500
□ Château Cheval Blanc Saint-Émilion 1er Grand Cru Classé Bordeaux, France • Cabernet Franc, Merlot	1982	4200
Leeuwin Estate Art Series Cabernet Sauvignon Margaret River, Australia • Cabernet Sauvignon	2020	205
Mount Mary Vineyard Quintet Victoria, Australia • Cabernet Sauvignon, Merlot, Cabernet Franc, Malbec, Petit Verdot	2018	355
Don Melchor Central Valley, Chile • Cabernet Sauvignon, Cabernet Franc	2021	510

SWEET



Domaine Des Chenes Rivesaltes Ambre Languedoc- Rousillon, France • Grenache Blanc, Macabeu	2008	150
Chateau Bastor Lamontagne Sauternes Bordeaux, France • Sauvignon Blanc, Semillon	2010	205
Château Coutet Barsac 2009 Bordeaux, France • Sauvignon Blanc, Semillon	2009	300
Château d'Yquem Sauternes Bordeaux, France • Sauvignon Blanc, Semillon	2011	1550
Yves Cuilleron Condrieu Ayguets (500ml) Rhône Valley, France • Viognier	2006	260

