

ATLAS

prices are subject to 10% service charge and prevailing government taxes



## GIN & TONIC

The peerless G&T. An iconic refresher that evolved from a British colonial staple to a contemporary favourite.

<b>ATLAS G&amp;T</b>	19
elevated london dry gin, ATLAS burma tonic, lemon	
<i>a bright and spirited classic for when the sun shines on london</i>	
<b>Gin Tonica</b>	23
american gin, mallorcan tonic, lemongrass, orange	
<i>a fresh, herbaceous ode to spain, where gin and copa reign supreme</i>	
<b>Old Tom &amp; Tonic</b>	22
italian old tom gin, cucumber tonic, lime	
<i>adventurous with notes of juniper &amp; citrus, gently balanced by vanilla</i>	
<b>Sloe &amp; Tonic</b>	23
english sloe gin, grapefruit & rosemary tonic, bayleaf	
<i>rich with blackberry jam and nutmeg, a decadent english interpretation</i>	
<b>Barrel-Rested G&amp;T</b>	28
australian barrel-rested gin, yuzu tonic, ginger	
<i>soft &amp; silky, with rich oak and gentle shiraz notes</i>	
<b>ATLAS Orange G&amp;T</b>	25
ATLAS' very own orange gin, mediterranean tonic, orange	
<i>vibrant and aromatic, with subtle hints of orange blossom</i>	



### **Bartender's Choice G&T**

feeling adventurous or love surprises?  
discover new favourites from the Gin Tower  
with a rotating line-up of highlights curated by our team

starts from 24



## ATLAS CLASSICS

Our very own modern take on the stalwarts of cocktails.  
A homage to where it all began.

<b>ATLAS Martini</b>	25
london dry gin, ambrato vermouth, orange bitters, champagne vinegar <i>strong, cold, floral, with a little lick of the wild</i>	
<b>Orange Blossom Martini</b>	28
ATLAS' very own orange gin, blanc vermouth, chocolate bitters, mint <i>herbaceous with hints of chocolate and orange</i>	
<b>ATLAS Espresso Martini</b>	24
french vodka, coffee liqueur, espresso, cream <i>creamy, bold, with a lift of caffeine</i>	

---

## AN ATLAS SUITE

Enjoy all three modern adaptations of the iconic Martini in one flight,  
and savour this symbol of cocktail elegance.

three petite martinis

38



<b>ATLAS Gimlet</b>	25
scottish gin, fino sherry, triple citrus cordial, lime, salt <i>refreshingly tart with a dash of saline, a reimagining of a classic</i>	
<b>ATLAS French 75</b>	25
london dry gin, lemon, peach, salt, champagne <i>bright, elegant and vivacious, a stone fruit twist on the classic</i>	



## ATLAS VINTAGE

ATLAS is a dedication to the glamour, sophistication and discernment of a time gone by.  
ATLAS Vintage is a celebration of gin antiquity through the lens of our vintage and rare collection.  
An opportunity to taste a little piece of history.

### Vintage Martini

gin from the decade of your choice, mixed to your specifications  
*travel back in time to taste gins from the dawn of the 20th century,  
through the interbellum and into modern times*

1910s	275	1940s	175	1970s	100
1920s	250	1950s	150	1980s	75
1930s	200	1960s	125	1990s	50

### Vintage Negroni

250

1930s london dry gin, italian sweet vermouth, vintage campari  
*a spirited iteration of count camillo negroni's cocktail of choice*

### Vintage White Lady

200

1960s london dry gin, vintage cointreau, lemon  
*a delicate spectre, that packs a citrus punch*

## GIN TOWER EXPERIENCE

Journey up the hallowed steps of the ATLAS Gin Tower for an up-close look at the remarkable ATLAS Gin Collection. Led by one of our talented bartenders as your intrepid guide, you will handpick a gin of your choice for an in-depth experience. Enjoy a tasting and presentation of your chosen gin, followed by a custom paired G&T.

starts from 54 per guest  
two guest minimum

*for more information and availability, please approach a member of our staff.*



# SENSE OF PLACE

Modern yet lavish forms that echo progress and optimism - the lively spirit and energy of Art Deco architecture continues to inspire.

Explore these enduring monuments that connect and transcend human experiences across generations.

*The past does not die.  
Is it even past?*





## LUMINARY LANDMARK

PARKVIEW SQUARE - SINGAPORE - 2002

Reaching for the sky to capture the impossible, the glamour of Art Deco architecture expresses the limitless scope of our ambition. Buzzing with the energy of the era's greatest cities, Parkview Square is a portal to Lisbon, Madrid, Paris, Brussels, London, Helsinki and beyond, in a moment that defines both now and then.

Welcome to the rebirth of the roaring twenties, as the pendulum of time swings once again toward progress through the spirit of global revival.

### NO ALCOHOL



#### East Gibraltar

14

allspice, pomegranate, orange syrup, lemon, ginger ale  
*a burst of sharp and sweet to revive the spirit*



#### Crown Utama

12

chardonnay grape verjus, peach oolong tea, lemon, soda  
*a sparkling medley of flavours, with tones of tea and stone fruit*



#### Golden Crane

14

sour plum, spiced honey apple, bay leaves, soda  
*a rhapsody in gold that charms with tartness and spice*

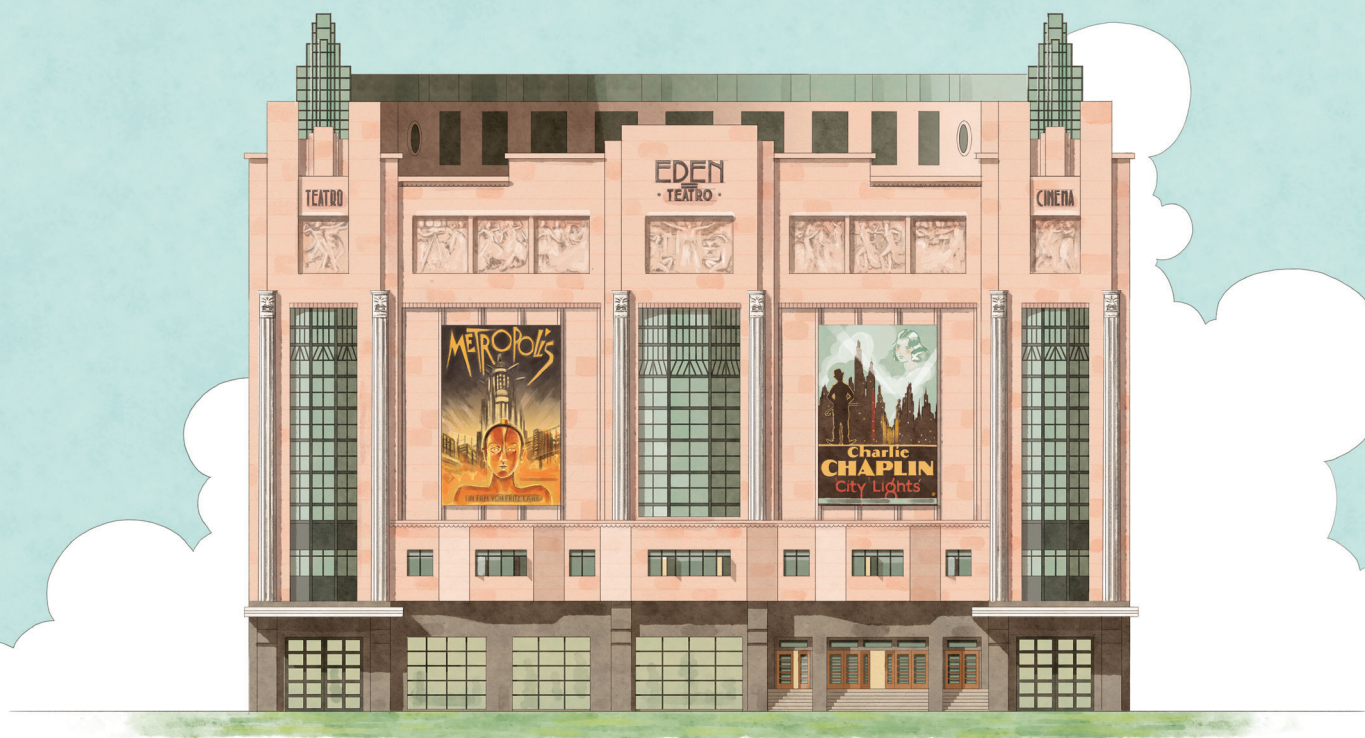


#### Vanda Mist

12

grapefruit, cream, almond syrup, salt, cinnamon  
*an almond delight, rich and sweet*





## DREAMING IN THE DARK

Teatro Éden - Lisbon, Portugal - 1914

During the golden age of film, young and old alike escaped to far-away and fantastical worlds through the magical power of cinema at the Teatro Éden, located in Lisbon's historic square, Praça dos Restauradores. Although only the charming salmon-pink façade remains – with its magnificent stone frieze depicting actors performing before a film crew – the ritual of cinema endures.

Until this day, the flickering lights transport audiences to the furthest reaches of imagination, and its allure continues to captivate.



### Arcade Melon

22

london dry gin, orange liqueur, port, cinnamon, clarified milk, rock melon  
*herbaceous and fruit forward, silky soft on the palate*



### Encore

28

japanese gin, champagne, ruby port reduction, moscatel sherry, lemon, aer  
*brightly spiced and fruity, sparkling with effervescence*

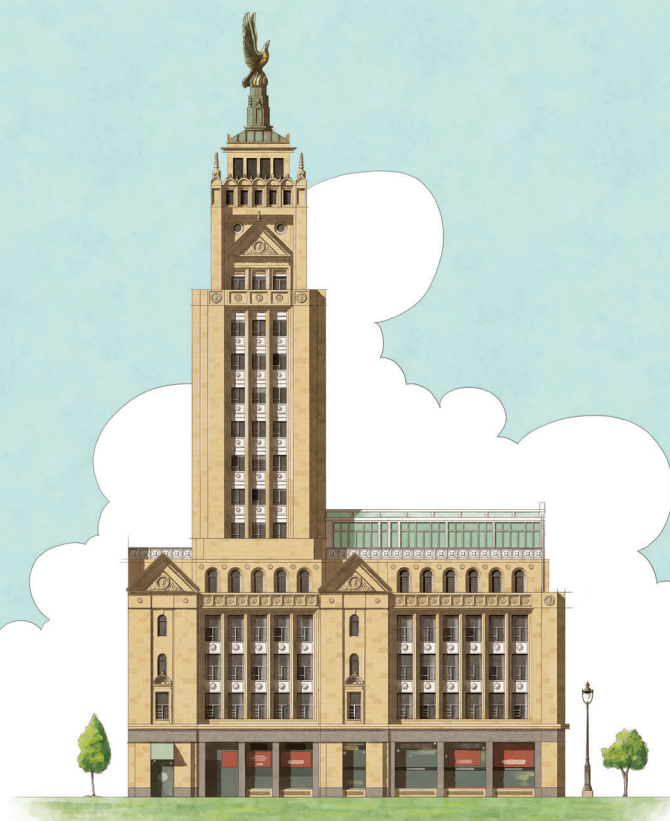


### Biaxa Centro

24

cocoa infused cachaça, chardonnay berry shrub, burnt citrus syrup, lavender  
*a nutty tang evoking the fresh buzz of a historic neighbourhood*





## PROMISE OF PROGRESS

Edificio De La Unión Y El Fénix Español - Madrid, Spain - 1931

The first skyscraper to rise in Madrid during the Literary Silver Age, the Edificio de la Unión y el Fénix Español embodies Spanish resilience with the majestic phoenix perched atop its crown. From the ashes of regime change rise the triumphs of social enterprise, etched in the pages of history by the pens of Federico García Lorca and the Generation of '27.

An energetic city soars with the spirit of endeavour and opportunity. Many continue to make the journey with dreams and aspirations in hand, taking a leap for the chance of a new beginning.



### Sun Gate Spritz

23

raspberry infused sherry blend, dry vermouth, peach, rosemary, royal botanic tonic  
*quench dawn's thirst with a light, fruity tartness*



### Union Phoenix

24

old tom genever, verdejo wine, amontillado sherry, lemon, parsley, frozen grapes  
*a crisp, bright bitterness to revive the tongue*



### Calle Alcalá

22

american gin, berry jam, almond, clarified milk  
*a sweet harmony of berries and citrus down memory lane*



## EMPORIUM OF HOPE

La Samaritaine - Paris, France - 1869

Eclipsing its humble beginnings, this grand magasin turned society into explorers of tomorrow who pronounced their dreams and ambitions through fashion, transforming Paris into the style capital of the world. La Samaritaine revolutionised shopping by making its labyrinthine aisles of ready-to-wear accessible to all.

Its raison d'être was to be an avenue connecting people across social and intergenerational divides, declaring that style is a right, not a privilege.



### Vin De Pomme

23

french gin, herbal liqueur, spiced apple honey, chablis wine, aer  
*an herbaceous crispness evoking the healing of autumn*



### Pont Neuf Daisy

25

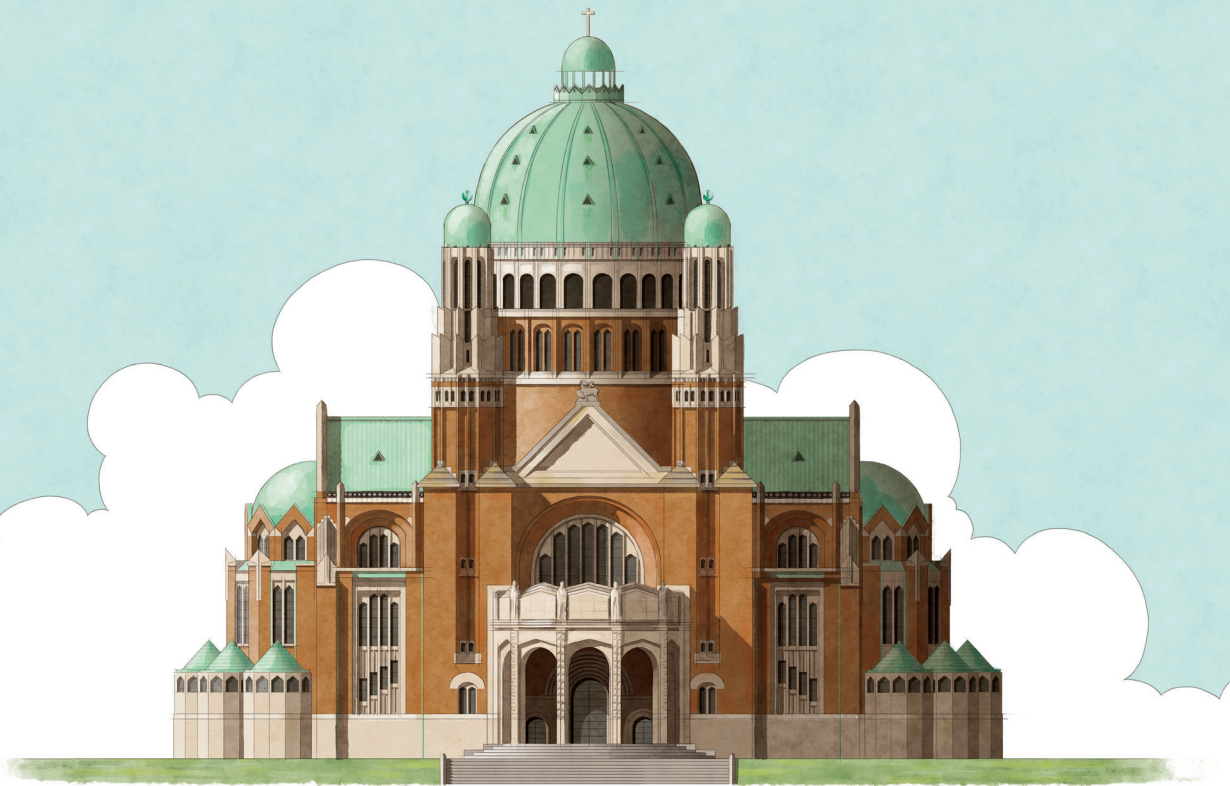
roquefort cognac, calvados, grappa, plum, elderflower, lemon  
*history cast in brilliant colours, refreshing citrus with a piquet twist*



### Société du Nouveau

26

french gin, toasted fennel, truffle, italian bitter vermouth, soda  
*a burst of savoury fizz to catalyse the hunt for the new*



## PALACE OF PEACE

National Basilica Of The Sacred Heart - Brussels, Belgium - 1905

Sitting atop Koekelberg Hill is a city within a city: a magnificent church with a distinctive copper green dome announcing itself as a sanctuary to foster spirituality through the transportive qualities of art. The architectural design won the Grand Prix at the 1925 Exposition Internationale des Arts Décoratifs et Industriels Modernes, the seminal world fair that marked the birth of Art Deco.

Places of worship continue to serve as shelters, connecting believers with shared tenets, practices, and rituals. Be moved by the same surrounds and follow the well-worn paths of the faithful.



### Sunset Hill

24

mezcal, pear, gentian, curry leaf, lemon, aer

*a silky bright panorama, from savoury essence to buttery finish*



### Van Huffle

25

rye whiskey, sour cherry, spiced liqueur, lime, sage, soda

*a bold swill of spice with a crispy hint of fruit*



### Parish Room

26

nicaraguan aged rum, triple sec, almond, px sherry, amaro, cream

*a strong spirit with a creamy coat defining decadence*





## ELECTRIC POWERHOUSE

Battersea Power Station - London, United Kingdom - 1941

Majestic bronze doors and ornate wrought-iron staircases are the lavish touchstones of Battersea Power Station, which once supplied electricity to power Buckingham Palace and the Houses of Parliament. During World War II, the iconic cylindrical chimneys with their plumes of smoke served as a beacon home for pilots. More recently, rouge inflatable pig escaped from its tether during a Pink Floyd album cover shoot, halting air traffic.

This brick cathedral has become part of the intangible fabric of London and an icon of industrial heritage, astonishing visitors with the inspiring power of human drive.



### Sir Giles

23

reposado tequila, apple pie moonshine, herbal liqueur, px sherry, verjus  
*a spirit-forward cinnamon clove spice that leaves a real impression*



### Vapour Guide

25

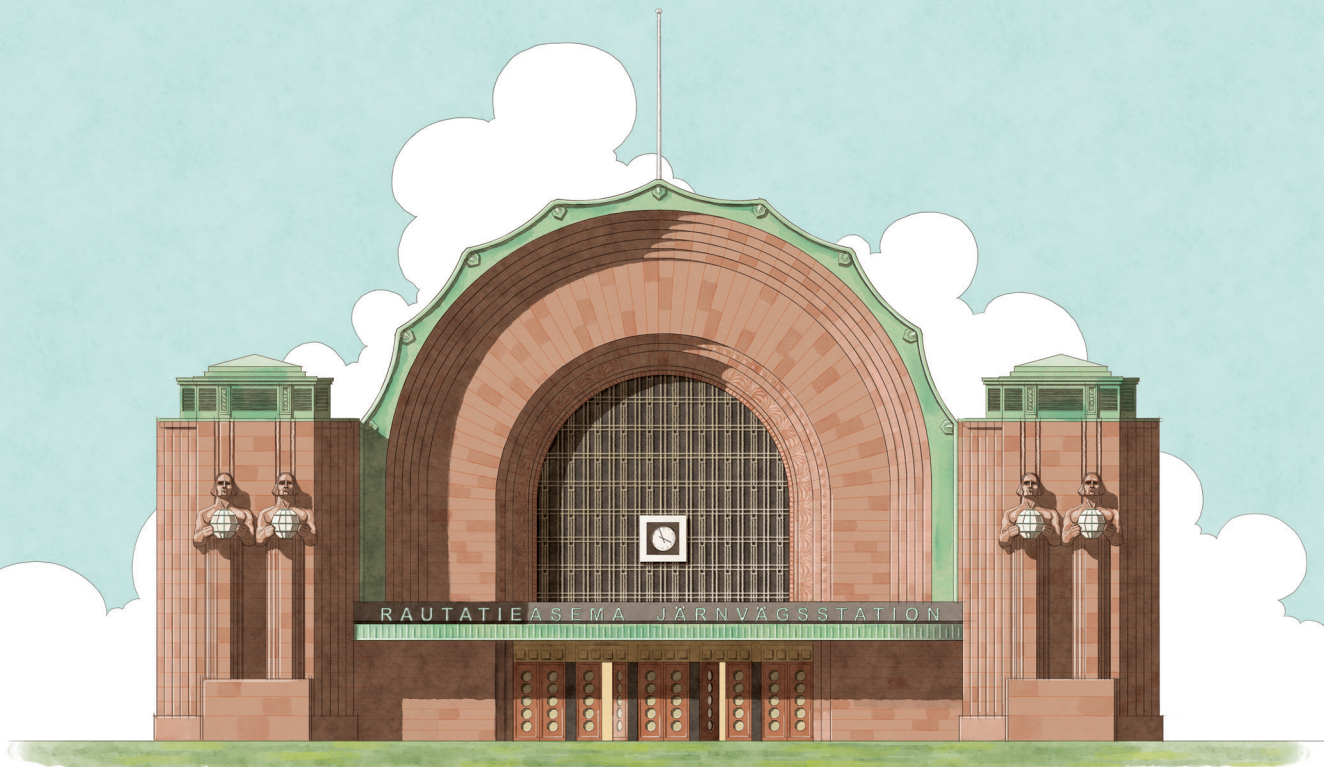
peach oolong-infused american vodka, english gin, bianco vermouth, rose aperitif  
*a peachy punch with herbaceous notes lands a spirited kick*



### Nine Elms

27

vanilla washed-bourbon, peated smoke, art deco tea, dry cider  
*an indulgent flavour bomb, strong and sweet*



## MEN OF THE FUTURE

Helsinki Central Station - Helsinki, Finland - 1919

With a design well ahead of its time and singing of Finland, the Helsinki Central Station's granite façade is guarded by four giants bearing glowing lanterns in their stone hands. Once past these guardians, passengers enter grand vaulted halls, where trains run like clockwork, transporting travellers north to the Arctic Circle, east to Russia or west to the enchanting Finnish coast and archipelago by the Baltic Sea.

Follow the path of these pioneering explorers and relive the romance of rail travel during the early 20th century: a grand adventure awaits.



### Anethum Granite

24

aquavit, dill tincture, herbal elixir, aperitif wine, bitter aperitif  
*slightly bitter and herbal with a bold finish*



### Kaali Rommi

26

red cabbage infused rum, sweet vermouth, rose aperitif, raspberry  
*a vegetal, savoury taste with the power to ground you*



### Hands of Stone

24

bourbon, greek brandy, lingonberry infused sweet vermouth, absinthe  
*a multi-layered journey with a dried fruit character*



## FINE CHAMPAGNE

For our ATLAS habitués, we propose a small selection of fine Champagnes to be drunk by the tulip, if not by the bottle.



### BY THE GLASS

		Glass (125ml)	Bottle
<b>Charles Heidsieck "Brut Réserve" Magnum</b> <i>hazelnuts, toasty and a touch of yellow apples</i>	NV	22	240
<b>Louis Roederer "Collection 242"</b> <i>vivid intensity, luscious finish with energetic and fresh notes</i>	MV	27	160
<b>Piper-Heidsieck "Cuvée Réserve Essentiel" ATLAS</b> <i>red apple, meyer lemon, crushed almond with chalky minerality</i>	NV	29	170
<b>Roger Coulon "Rosélie" Rosé de Saignée</b> <i>structured, ripe strawberries with a touch of spice</i>	NV	29	170

### EXPRESSIONS OF CHAMPAGNE

embark on a voyage of discovery,  
enjoy a sparkling flight of the effervescent nectar  
four serves of 75ml



## BY THE BOTTLE

<b>Heidsieck &amp; Co. Monopole “Goût Américain” Extra Dry</b> <i>white peach, candied ginger with sweet pastry notes</i>	NV	170
<b>Drappier Rosé</b> <i>lightly floral, hints of spice cake, good intensity</i>	NV	170
<b>Delamotte Blanc de Blancs</b> <i>green apple and spring blossom, delicate with chalky minerality</i>	NV	180
<b>Tarlant “Zero” Brut Nature</b> <i>refreshingly dry with citrus, pure with great finesse</i>	NV	190
<b>Ruinart Blanc de Blancs</b> <i>satisfying citrus and white flowers with a lingering, mineral-laced finish</i>	NV	240
<b>Duval-Leroy “Authentis Bouzy” Blanc de Noirs Brut Nature</b> <i>powerful on the nose, silky texture with great length</i>	2005	280
<b>Deutz Cuvée “William Deutz” Brut</b> <i>delicate like pear and patisserie, a little honey, refined bubbles</i>	2002	440
<b>Dom Pérignon</b> <i>stone fruit and lightly toasted brioche, silky and dense</i>	2010	450
<b>Krug Grande Cuvée 169<sup>ème</sup> édition</b> <i>ripe apple aromas, hazelnut and nougat, flinty and citrusy finish</i>	MV	460
<b>Louis Roederer “Cristal”</b> <i>expressive nose of honey and oak, rich, long mineral freshness</i>	2012	680

For the complete Champagne journey, please ask for the ATLAS Collections menu.



## STILL WINES

While Champagne is our true vinous love, our enjoyment of all wines knows no bounds. Enjoy by the glass or bottle, as it suits your whimsy.



WHITE	Glass (150ml)	Bottle
<b>Dr. Loosen Wehlener Sonnenuhr Kabinett 2019</b> Mosel, Germany • Riesling <i>delicate, crisp acidity and stunning freshness with a touch of sweetness</i>	18	85
<b>Bouchard Père &amp; Fils Bourgogne Chardonnay Réserve 2019</b> Burgundy, France • Chardonnay <i>juicy and generous on the palate, lively with a properly dry finish</i>	20	95
<b>La Perrière Blanc Fumé de Pouilly 2020</b> Loire Valley, France • Sauvignon Blanc <i>floral lime and grapefruit, a fair mineral persistence</i>	22	105
<b>Mario Schiopetto Collio DOC 2018</b> Friuli Venezia Giulia, Italy • Pinot Grigio <i>aromatic exotic fruits, rose and delicious mineral tone</i>		110
<b>Yves Cuilleron 'Les Vignes d'à Côté' 2019</b> Rhône Valley, France • Viognier <i>ripe honeyed pear and apricots, impeccable balance with a lick of citrus</i>		110
<b>Nautilus 'The Paper Nautilus' 2020</b> Marlborough, New Zealand • Sauvignon Blanc <i>indulgent textures, delightful citrus based intensity</i>		115
<b>Henri Bourgeois La Demoiselle de Bourgeois Pouilly-Fumé 2017</b> Loire Valley, France • Sauvignon Blanc <i>rich, densely textured and full of white and green fruit</i>		145
<b>Domaine du Roc des Boutires 'Aux Bouthières' Pouilly-Fuissé 2019</b> Burgundy, France • Chardonnay <i>complex bouquet of pear and meyer lemon, opulent and round</i>		150

ROSÉ	Glass (150ml)	Bottle
<b>Foncalieu ‘Les Cardounettes’ Rosé 2019</b> IGP Pays d’Oc, France • Syrah <i>silky-textured and pale pink, a dry finish with red fruits, organic</i>	16	75
RED		
<b>Marqués de Tomares Crianza 2018</b> Rioja, Spain • Tempranillo, Graciano <i>dark juicy cherries, chocolate notes with impressive tannin structure</i>	18	85
<b>Château L’Escadre Grande Réserve 2016</b> Bordeaux, France • Merlot, Cabernet Sauvignon, Malbec <i>medium body, rich blackberry with generous tannins</i>	20	95
<b>E. Guigal Côtes-du-Rhône Rouge 2017</b> Rhône Valley, France • Syrah, Grenache, Mourvèdre <i>full bodied and bright, a nose of black fruit with a long elegant finish</i>	22	105
<b>Domaine Lamarche Bourgogne Rouge 2018</b> Burgundy, France • Pinot Noir <i>fleshy ripe red berries, a sleek and succulent finish</i>		145
<b>R. López de Heredia Viña Tondonia Reserva Rioja 2009</b> Rioja, Spain • Tempranillo, Garnacha, Mazuelo, Graciano <i>macerated strawberries, autumn bonfires and gentle vanilla notes</i>		150
<b>Waits-Mast Mariah Vineyard 2016</b> Mendocino Ridge, USA • Pinot Noir <i>a core of black cherry and earth, spicy and oaky with soft tannins</i>		160
<b>Prunotto Barolo DOCG 2017</b> Piedmont, Italy • Nebbiolo <i>saturated and rich with spiced aromas, a finish of refined tannins</i>		180
<b>Château La Nerthe Châteauneuf du Pape 2017</b> Rhone Valley, France • Grenache, Syrah, Mourvèdre, Cinsault <i>alluring red florals, red berries and light, herbal accents, plush and plump</i>		200

For the complete wine journey, please ask for the ATLAS Collections menu.



## BARLEY, HOPS & APPLES

A sharp selection of classic English and European beers and cider.  
A mix of the old and the new.



<b>Pilsner Urquell from the Tap</b> <i>fragrant with flowery, herbal hop aromas</i>	450 ml	4.4%	16
<b>Jaipur IPA</b> <i>enticing bitterness with a slight sweetness, flavors of citrus</i>	330ml	5.9%	19
<b>St. Bernardus Wit</b> <i>spiced, fruity, and a touch of sweet orange</i>	330ml	5.5%	19
<b>Duchesse Cherry</b> <i>ruby red hue, crisp and refreshing with sour fruit</i>	330ml	6.8%	22
<b>Saltaire Triple Chocolate Stout</b> <i>clean and rich with a chocolate kick</i>	500ml	4.8%	22
<b>St. Bernardus Tripel</b> <i>complex and rich, blonde with velvety-soft head of froth</i>	330ml	4.8%	22

“

“BEER, IF DRANK WITH MODERATION, SOFTENS THE TEMPER,  
CHEERS THE SPIRIT, AND PROMOTES HEALTH.”

– Thomas Jefferson



## SODAS, TONICS & FRUITS

Perfect companions to our spirits or refreshing on their own.



### SOFTS

Coca Cola	Regular / Light / Zero	7
East Imperial	Soda Water / Ginger Beer / Thai Ginger Ale	8
Sprite		7
Kombucha	Yuzu & Lavender by Wild Boocha	8

### TONICS

#### New Zealand

East Imperial	ATLAS Burma / Old World / Yuzu / Royal Botanic	8
---------------	--	---

#### Sweden

Ekobryggeriet	Cucumber	8
---------------	----------	---

#### United Kingdom

Fever Tree	Mediterranean	8
Franklin & Sons	Mallorcan	8
London Essence	Grapefruit & Rosemary	8

### JUICE

Fresh pressed	Orange / Grapefruit / Pineapple / Apple	8
---------------	---	---

### MINERAL WATER

San Pellegrino	750ml	11
Aqua Panna	750ml	11



#### ATLAS WATER

We are committed to reducing our carbon footprint. Our in-house water filtering system ensures the purest water we can serve whilst retaining beneficial mineral salts. Your choice of free flow still and sparkling water for \$2 per guest. \$1 per guest will be donated to a local charity.



## LEAVES, OOLONGS & TISANES

Our tea master proposes a selection of classic and exotic teas from around the world.



<b>The ATLAS Art Deco Blend</b> <i>blended just for us, a fine black tea incorporating dry gin botanicals</i>	10
<b>Royal English Breakfast</b> <i>a vibrant blend of milima, kenilworth and assam dejoo</i>	8
<b>Regal Earl Grey</b> <i>premium mild tea blended with organic vanilla &amp; bergamot</i>	8
<b>Aromatherapy In A Cup</b> <i>an infusion of flowers and mint with sweet lemon balm</i>	8
<b>Red Rooibos</b> <i>natural sweet and earthy tones, rooibos and delicate lemon verbena</i>	8
<b>Hojicha Green</b> <i>toasty, malty notes with a hint of caramel on the palate</i>	8
<b>Lychee Rose Black</b> <i>a lively blend of lychee and ceylon black tea, with fruity and floral notes</i>	8
<b>Peach Green Oolong</b> <i>a blend of green tea and peach notes with overtones of hibiscus</i>	12
<b>Pai Mu Dan</b> <i>exquisite white tea, floral, fresh green aroma, a touch of forest</i>	12
<b>Palace Grade Pu'er</b> <i>a vintage black tea pu-erh, sweet honey, earthy and nutty</i>	12
<b>Milk Oolong</b> <i>creamy and light golden, with a hint of butter</i>	12





## BEANS, CHAI & CHOCOLATE

Proudly roasted in Singapore by Liberty Coffee, the “Speakeasy” blend is full-bodied with a dark chocolate base note and complex bittersweetness.



<b>Espresso</b> <i>strong, black</i>	4
<b>Long Black</b> <i>strong, black</i>	4
<b>Piccolo Latte</b> <i>strong, milk</i>	5
<b>ATLAS Gibraltar</b> <i>strong, milk</i>	5
<b>Flat White</b> <i>mild, milk</i>	6
<b>Latte</b> <i>mild, milk</i>	6
<b>Cappuccino</b> <i>balanced, milk</i>	6
<b>Mocha Latte</b> <i>balanced, milk</i>	7
<b>Iced Long Black</b> <i>strong, black</i>	5
<b>Iced White</b> <i>mild, milk</i>	6
<b>Iced Mocha</b> <i>balanced, milk</i>	7
<b>Drinking Chocolate</b> <i>sweet, milk</i>	7
<b>Seven Spice Chai Latte</b> <i>sweet, milk</i>	7

Additional Espresso Shot +2

Soy or Oat Milk +1