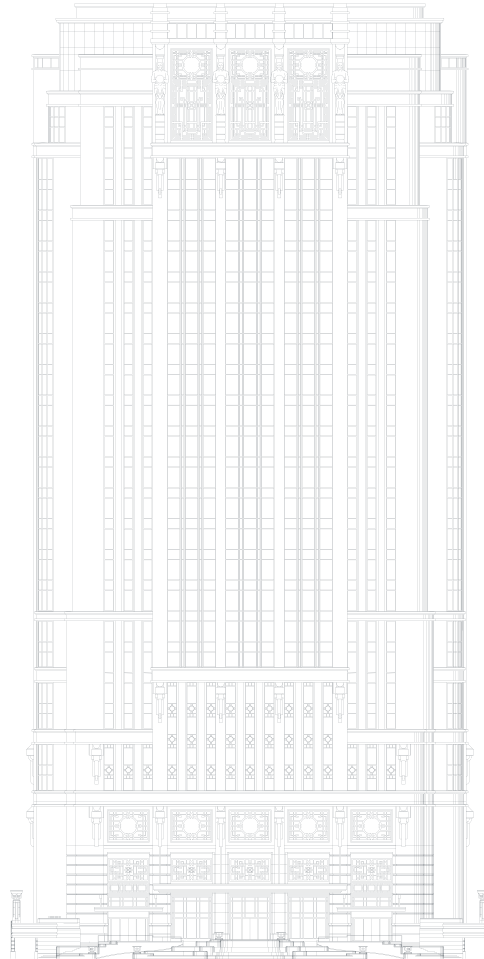




ATLAS

THE ATLAS COLLECTIONS





Dear Guests,

Welcome to ATLAS - a labour of love that honours my grandfather, CS Hwang, the late founder of Parkview Group, and the beautiful space he created in which ATLAS resides. It is our hope that your experience at ATLAS reflects the passion and attention that has gone into every aspect of its creation. A grand and beautiful space, we invite you to unwind, enjoy, celebrate and indulge as our talented and dedicated ATLAS team makes you feel most welcome and at home.

The ATLAS Collections feature two of the world's most remarkable physical collections of Gin and Champagne. Building the ATLAS Collections was a monumental task which took over two years to curate and assemble. We are also delighted to feature a selection of rare and exceptional still wines and whiskies from my own family's private cellar, which for the first time since its inception almost 40 years ago, has been opened especially for our guests at ATLAS.

Building upon the modest collection of wines started by my grandfather, the Parkview Family Cellar found a permanent home in 1989 with the opening of the Parkview Group's flagship property, Hong Kong Parkview. Initially consisting of a small collection of 50 bottles of right bank Bordeaux wines, the collection grew steadily under the stewardship of my uncle, George Wong, and his son Alex.

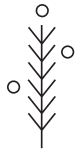
By 2000, the collection was at 3,000 bottles and has now expanded beyond the right bank to other regions in France and the rest of the world. Currently, the collection stands at 50,000 bottles of fine wine and over 10,000 bottles of whiskey acquired through reputable merchants, auctions, and numerous trips to the wineries and distilleries where suppliers have now become close friends, ensuring that the family always has access to the finest and rarest bottles.

For those who share our genuine passion for fine wines and spirits, a small but special sampling of the bottles from the Parkview Family Cellar have been brought to ATLAS for you to enjoy. We hope that you are able to try things here that you would otherwise not find; and that you will enjoy our treasures as much as we have enjoyed collecting them and sharing them with you.

Warmest regards,

Vicky Hwang

TABLE OF CONTENTS



THE ATLAS GIN COLLECTION

Introduction by the ATLAS Master of Gin

Countries Represented

A Guide to the Wonderful World of Gin

Our Taxonomy of Taste

Seven Most Common Botanicals

The Search for the Perfect Pairing

GIN CATEGORIES

London Dry

Modern

Overproof and Navy Strength

Barrel-Rested

Old Tom

Sloe Gin

Genever

Rare & Collectable



FINE SPIRITS OF THE WORLD

Whisk(e)y

Brandy

Sugarcane

Agave

Vodka

Absinthe

Vermouth

Aperitif

Digestif

Liqueur



THE ATLAS CHAMPAGNE COLLECTION

La Sélection

Le Terroir

La Prestige

Les Collections

FINE WINES OF THE WORLD

White

Rosé

Red

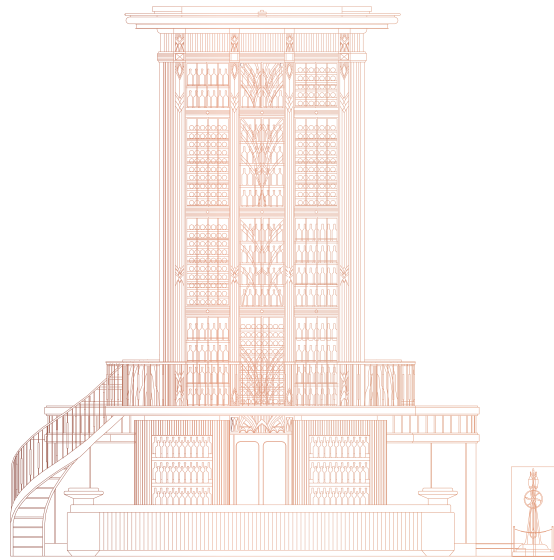
Sweet

Parkview Family Collection

White

Red

THE ATLAS GIN COLLECTION



Gin; a clear alcoholic spirit distilled from grain and flavoured with juniper berries (and other botanicals). The name is derived from the French genièvre or the Dutch jenever, which both mean juniper.

Juniper; an evergreen, dioecious shrub that grows all throughout the Northern Hemisphere. It produces a long ripening berry that when dried can impart a piney, citrusy, floral aroma and flavour.



Welcome to the ATLAS Gin Collection; a labour of love that has involved collecting, carefully curating and cataloguing the entire world of gin. Our aspiration is to introduce our guests to the beauty and wonder of this incredible spirit.

Gin is liquid history. From the tombs of ancient Egypt, the monasteries of the Middle Ages, the laneways of the Industrial Revolution, through Prohibition and to the current Second Golden Age of fine drinking, gin has been drunk by all classes and in all corners of the globe. For over two millennia juniper berries have been used for ritual, medicinal and gastronomic purposes. For almost 1,000 years, this unique botanical has been used in fine beverages, namely gin.

Gin is provenance; it looks to the natural world for flavour, aroma and sensation. Gin is the quintessential cocktail ingredient, and since the turn of the twentieth century has been a bartender's favourite cocktail spirit. It is a beacon for sophistication and style, yet is founded upon mayhem and grit. Gin is a delicious spirit; it runs the gamut of fresh, vibrant and zesty, to floral, soft and delicate. It can be robust and bracing, it can be savoury and spiced.

Here at ATLAS, we are delighted to share one of the world's finest collections of gin with you. We have arranged our gins into seven different categories, therein lies numerous flavour profiles, botanicals and expressions of the juniper spirit. Our passionate and dedicated gin team stands ready to assist you in your gin journey.

Jason Williams

Founding Curator of the Gin Collections, Master of Gin

The ATLAS Gin Collection

Argentina (1)	Liechtenstein (1)
Australia (104)	Luxembourg (1)
Austria (8)	Mexico (1)
Belgium (52)	Moldova (1)
Brazil (2)	Netherlands (90)
Canada (34)	New Zealand (27)
China (2)	Norway (7)
Colombia (2)	Peru (2)
Croatia (1)	Philippines (7)
Czech Republic (2)	Poland (2)
Denmark (1)	Portugal (13)
Ecuador (1)	Romania (1)
England (367)	Scotland (114)
Estonia (4)	Singapore (11)
Finland (13)	Slovenia (2)
France (30)	South Africa (39)
Germany (59)	Spain (63)
Greece (1)	Sri Lanka (2)
Guatemala (1)	Sweden (17)
Hong Kong (1)	Switzerland (23)
Iceland (4)	Taiwan (2)
India (4)	Thailand (6)
Ireland (24)	United States of America (131)
Israel (2)	Venezuela (1)
Italy (44)	Vietnam (1)
Japan (24)	Wales (10)
Latvia (1)	

THE 'GIN RATION' DECREE

The ATLAS Gin Collection is a rare and special treasure, designed to be enjoyed by all. As such, we must insist on a Gin Ration, just like the old days in the Royal Navy in the United Kingdom. For the special gins in our collection – those where only one or two bottles have been carried from afar - guests are allowed just one pour of each gin per visit to ATLAS.

If you love gin as much as we do, or would like to taste even more of the rare gins that arrive at ATLAS, please ask about becoming a member of our Juniper Society.

◊ denotes gins that are subject to the Gin Ration.

A GUIDE TO THE WONDERFUL WORLD OF GIN

The world of gin has become wide and deep. Furthermore, there is a distinct lack of categorisation compared to other spirits, such as Tequila or Cognac. To help you navigate our remarkable gin collection we have split the gins into the following categories:

LONDON DRY

The archetypal style of gin. The most traditional and what most people know as Gin. Legally defined by production technique: a distilled gin with real botanicals and nothing added after distillation. Actually, it does not have to be made in London and usually has more prominent juniper representation.

MODERN

We define (loosely, admittedly) modern gin as one that doesn't fit the juniper-forward London Dry Gin style. Gins that celebrate or highlight an abundance of botanicals, or have an emphasis on fruit or spice, or gins that champion location or technique.

OVERPROOF AND NAVY STRENGTH

Gin has a rich history within the British Royal Navy, for centuries it was issued to all ships sailing the high seas. Traditionally, to prove its strength and quality, it had to be able to wet and ignite gun powder. Over time it was deduced that the lowest proof for this experiment to succeed was 114 proof, or 57% abv (alcohol by volume). This higher proof makes the gin and the botanicals shine.

BARREL-RESTED

When a gin has been stored in a wooden cask for a period of time, imparting some of the colour and character of said wood, it is classified as a barrel-rested gin. A sub-category that has boomed in recent years but has historical precedents. Once upon a time, all gins would have been stored and transported in a barrel!

OLD TOM

A style of gin popular in the 18th and 19th century in a time when techniques such as sweetening or the addition of extra botanicals were used to mask the favour of poorly made (or dangerous) gins. Now it is back in a more craft iteration with variations including different sugars and wood ageing.

SLOE GIN

Actually a gin liqueur, this is a traditional drink from the English countryside. Made from sloes, the plum-like fruit that grows on blackthorn hedgerows dividing old properties. Simply gin, sloe berries and sugar.

GENEVER

Not actually gin! We keep a hefty collection of this because it's important to the history of gin. This mostly Dutch spirit is considered the precursor to what we know as gin. It's kind of like a mix between unaged whisky and gin. It is sweet, and very cereal-like.

*after this categorisation, we further split the gins into flavour profiles.
we invite you to explore our taxonomy of taste next!*

OUR TAXONOMY OF TASTE

Through much research, testing and the resulting inebriation (hiccup), the ATLAS Team landed upon the following terminology to best convey the flavour profile of our gins. The taxonomy is meant as a guide and within each designation the prominence of that sensation may vary wildly. Taste is subjective, so go easy if you disagree!

CITRUS

bright, zingy, refreshing

Bright, fresh, blossomy goodness. Can be a burst of orange sherbet, a suggestion of lemon curd. Some zesty lime skin or sweet, bitter grapefruit. Can be a restrained hint of citrus pith. An explosion of perfumed citronella.

FLORAL

bouquet, perfumed blooms, petals

A bouquet of excellence. The new modern of deliciousness. Sometimes perfumed blooms of all manner of flowers, petals, stalks and dried spices. Other times more restrained, with subdued fragrance of sweet flower-wonder.

HERBAL

fresh bunch, dried leaves, vegetal

Tight bunches of all herbs. Fresh, wet and dried. Fossilized herbs with tannic tea leaves. The snapped stalk of an old rosemary bush. Sweet basil and herbs de Provence. Sometimes pungent, sometimes mild.

SPICED

peppers, baking spices, fragrant

Lifted baking spices, exotic peppers, fragrant arboreal notes mixed with subtle sweet aromatic dried wood. Maybe a little tingle, maybe a little dessert-like spice. Maybe like a sauna with the heat turned up.

LUSCIOUS

delicate, velvety sweetened, scrumptious

Vibrant, lifted botanicals. Extra flowers, fruits, herbs and spices to give deliciousness. Often delicate and balanced with sophisticated lusciousness. Sometimes confectionary with over-the-top youthful fruitiness.

NUTTY

rustic, woody, savory edge

Rustic candy of the earth. Nuts and seeds and kernels of all sorts. Ground-up woody flavour mixed with some sweet chalk, and soft spice. Oily sometimes, brown and beige and sweet and nice with a savoury edge.

EARTHY

dark rich soil, turf, wet leaves

Dark rich soil, wet leaves and turf. Chalk-like with a combination of menthol, compost and forest floor. Can be recognized as fresh earth, withering underlay or top notes of perishing leaves.

GRASSY

greenness, tall grass, meadow

Sweet, greenness. Long stalks of fresh tall grass. Reeds, grass clippings, just-cut soft herbs and a meadow blanket of lively fresh lawn. Some straw-like bundles of hay.

BERRIES

plump, roundness, jammy

Plump, fruity roundness. Darker and sweeter fruity notes and some left-on-the-vine ripeness. Notes of something jammy, fruit preserves like strawberry or plum or of course those blackthorn sloes.

FRUITY

exotic, audacious, not fruit flavoured

Audacious and fun-loving. Packed full of who-knows-what. Exotic fruits, flowers and other botanicals from around the world. Modern iterations of traditional gin. Not fruit-flavoured gins, but distilled gins with an emphasis on fruity flavour.



SEVEN MOST COMMON BOTANICALS

JUNIPER

Gin has to have this to be called gin. A small dried berry. Smells and tastes like spruce and pine. Nice burnt citrus, underripe plum and dry branch. Forest floor, in a good way.

CORIANDER SEED

In nearly all gins. This is the spicy, woody little seed from the bush. This botanical gives gins a lifted citrus quality when there is no citrus. Sweet, spicy wet wood and lemon sherbet.

ANGELICA

The third most used botanical. Usually the root. Musky, woody and more earthy than the other spices in the 'holy trinity'. Known as a fixative spice to help the others shine.

NUTMEG

A staple on spice shelves and native to South East Asia. Another warming, spiced botanical that gives gins some extra length on the palate. Used widely in cooking, cosmetics and gin.

ORRIS

The dried root of the iris plant. Used as a base ingredient to bind other ingredients together, similar to how it's used in perfumery. By itself it can give off a floral, violet petal like aroma.

CASSIA

The bark from an evergreen tree native to South Asia. Resembling cinnamon, it has a distinct, sweet, fiery yet warming fragrance. It has a delightful pungency that adds warmth and depth to a gin.

LEMON

While other botanicals can give the impression of citrus, dried lemon peel is often the contributor. It gives a fresh brightness. The result can vary from confectionery to real, bite-a-lemon sensation.





THE SEARCH FOR THE PERFECT PAIRING

Tonic water was first used as a medicinal treatment for malaria by British troops in the 19th century. To counter the bitterness of early iterations of tonic, gin was mixed with tonic to make it more palatable. And thus, the G+T was born. The most celebrated pairing in any spirit category, the two-letter combination everyone knows.

Choosing the right tonic is as vital as choosing your gin. We have suggested pairings below, a wealth of possibilities await.

East Imperial ATLAS Burma Tonic

classic, the highest quinine available, a hint of lemongrass
enjoy with citrusy, spiced and earthy gins

East Imperial Old World Tonic

soft champagne bubbles, with less sugar
enjoy with luscious, berry forward and fruity gins

East Imperial Yuzu Tonic

aromatic, sweet yet strong, japanese citrus fruit
enjoy with citrusy, herbal and grassy gins

Fever Tree Mediterranean Tonic

fragrant, with the addition of soft herbs and lemon thyme
enjoy with spiced, nutty and earthy gins

London Essence Grapefruit & Rosemary Tonic

herbaceous, subtle quinine with zesty citrus
enjoy with floral, luscious and berry forward gins

London Essence Bitter Orange & Elderflower Tonic

tangy, with a confectionary floral note
enjoy with citrusy, spiced and earthy gins

East Imperial Royal Botanic Tonic

lifted quinine, with elderflower, notes of ruby grapefruit
enjoy with citrusy, floral and fruity gins

East Imperial Soda Water

zero quinine, ideal for letting the botanicals shine
enjoy with citrusy, floral and spiced gins

tonic to pair with your choice of gin

add 3

LONDON DRY

The archetypal style of gin. The most traditional and what most people know as Gin. Legally defined by production technique: a distilled gin with real botanicals and nothing added after distillation. Actually, it does not have to be made in London and usually has more prominent juniper representation.

CITRUS

BRIGHT, ZINGY, REFRESHING

AUSTRALIA			
◇ Hippocampus Gin, 41.5%	22	◇ Bankes Gin, 43%	26
<i>orange peel, lemon peel, cubeb</i>		<i>coriander, orange peel, lemon peel</i>	
◇ Kalki Moon Gin, 42%	28	◇ Bath Gin, 40%	28
<i>finger lime, lemon myrtle, ground ginger</i>		<i>cassia, wormwood, kaffir lime leaf</i>	
◇ McHenry Classic Dry Gin, 40%	26	◇ Bayswater Gin, 43%	28
<i>orange peel, cardamom, star anise</i>		<i>liquorice, nutmeg, orange peel</i>	
◇ Oxford Scholar Gin, 40%	34	◇ Bedrock Gin, 40%	28
<i>lemon peel, coriander, orange peel</i>		<i>lemon peel, orange peel, cinnamon</i>	
◇ Settler's Rare Dry Gin, 43%	22	Beefeater 24 Gin, 45%	22
<i>muntries, orange, lemon myrtle</i>		<i>sencha, chinese green tea, grapefruit rind</i>	
◇ Stone Pine Distillery Original Dry Gin, 40%	28	Beefeater London Dry Gin, 40%	20
<i>lemon myrtle, pink finger lime, orange</i>		<i>almonds, orris root, seville oranges</i>	
◇ Stone Pine Orange Blossom Gin, 40%	36	◇ Blue Thorn Gin, 40%	24
<i>orange blossom, lemon myrtle, finger lime</i>		<i>orange peel, lemon peel, almond</i>	
AUSTRIA		◇ Boxer Gin, 40%	26
◇ Aeijs Gin, 43.5%	34	<i>bergamot peel, nutmeg, cinnamon</i>	
<i>lavender, ginger, lemongrass</i>		◇ Brennen & Brown Colonial Gin, 43%	26
◇ J.A. Baczewski Dry Gin, 43.5%	22	<i>liquorice, orange peel, lemon peel</i>	
<i>aniseed, dill, ginger</i>		◇ British Polo Gin No.3, 42.7%	28
◇ The Good Gin, 47.4%	30	<i>elderflower, vanilla, lemon peel</i>	
<i>orange zest, turmeric, raw cacao</i>		Broker's Gin 40%, 40%	20
BELGIUM		<i>lemon peel, nutmeg, orange peel</i>	
◇ Filliers Classic Dry Gin 28, 46%	32	Broker's Gin 47%, 47%	22
<i>hops, allspice, fresh orange</i>		<i>lemon peel, nutmeg, orange peel</i>	
◇ Filliers Dry Gin 28 Tangerine Seasonal Edition, 43.7%	36	Burleighs London Dry Gin, 40%	22
<i>tangerine, allspice, hops</i>		<i>silver birch, dandelion, elderberry</i>	
◇ Gillemore Magical Gin, 46%	38	◇ Captain Cook Navigator First Voyage Gin, 42%	28
<i>grains of paradise, cubeb, orange peel</i>		<i>heather, orange peel, lemon peel</i>	
ECUADOR		Chase Williams Elegant Gin, 48%	24
◇ Crespo London Dry Gin, 45%	26	<i>bramley apple, angelica, lemon peel</i>	
<i>liquorice, dill, orris</i>		◇ City of London Dry Gin, 41.3%	24
ENGLAND		<i>orange peel, lemon peel, pink grapefruit peel</i>	
◇ 6 O'Clock Gin, 43%	26	◇ Connaught Bar Gin, 44%	46
<i>elderflower, winter savory, orange peel</i>		<i>bordeaux wine, nutmeg, lemon peel</i>	
◇ Ampersand Gin, 40%	26	◇ Curio Rock Samphire Gin, 41%	26
<i>orange peel, lemon peel, cubeb</i>		<i>rock samphire, seaweed, lime flower tea</i>	
		◇ D1 London Gin, 40%	32
		<i>nettle, orange peel, lemon peel</i>	
		◇ Dr. J's Gin, 45%	28
		<i>coriander, orange zest, macadamia nut</i>	
		East London Liquor Co. Dry Gin, 40%	22
		<i>lemon peel, grapefruit peel, cardamom</i>	

LONDON DRY - CITRUS

Fifty Pounds Gin, 43.5%	28	No. 3 London Dry Gin, 46%	24
<i>savory, nutmeg, lemon peel</i>		<i>orange peel, angelica, grapefruit peel</i>	
Fords Gin, 45%	20	◊ Old Bakery Gin, 41.7%	28
<i>angelica, jasmine, cassia</i>		<i>coriander, grapefruit peel, liquorice</i>	
◊ Foxdenton Estate London Dry Gin, 48%	26	◊ Palmer's 44 London Dry Gin, 44%	22
<i>lime flower oil, orris root, coriander</i>		<i>grapefruit peel, angelica, cassia</i>	
◊ Frog's Lip Gin, 47%	26	◊ Pink 47 Gin, 47%	22
<i>lime peel, lemon peel, juniper</i>		<i>almond, nutmeg, angelica</i>	
◊ Gin Kitchen Dancing Dragontail Summer Gin, 48%	28	◊ Portobello Road No.171 London Dry Gin, 42%	22
<i>green cardamom, pink grapefruit, juniper</i>		<i>bitter orange peel, lemon peel, nutmeg</i>	
◊ Greenall's London Dry Gin, 37.5%	22	◊ Rokeby's Half Crown London Dry Gin, 40.6%	22
<i>liquorice, lemon peel, coriander</i>		<i>juniper, lemon peel, coriander</i>	
◊ Hampshire Fine Dry Gin, 40%	26	◊ Salcombe First Bottling Limited Edition Gin, 44%	36
<i>lemon peel, lime peel, angelica</i>		<i>cubeb berry, lime peel, fresh grapefruit</i>	
◊ Haswell London Dry Gin, 47%	24	◊ Scout & Sage London Dry Gin, 40%	26
<i>bitter orange peel, sweet orange peel, savory</i>		<i>seville orange, lemon, pink pepper</i>	
Hawthorn's London Dry Gin, 41%	22	Sipsmith London Dry Gin, 41.6%	24
<i>angelica, orange peel, lemon peel</i>		<i>liquorice, coriander, angelica</i>	
Hayman's London Dry Gin, 40%	20	◊ Sis4ers Signature Dry Gin, 40%	26
<i>nutmeg, lemon peel, orange peel</i>		<i>mastic, lemon, orange</i>	
◊ Hexham Premier Cru Gin, 40%	24	◊ SW4 London Dry Gin, 40%	22
<i>orange, lemon, grapefruit</i>		<i>orris powder, lemon peel, cassia</i>	
◊ Holly's Gin, 42%	26	◊ That Boutique-y Miyagawa Citrus Gin, 46%	32
<i>passion flower, fresh lime, gentian</i>		<i>miyagawa, lime, douglas fir</i>	
◊ Hunters Gin, 43.3%	22	◊ The Sting London Dry Gin, 40%	24
<i>apple peel, sweet orange peel, lemon peel</i>		<i>cinnamon, lemon peel, orange peel</i>	
◊ HYKE Gin, 40%	24	◊ The Sweet Potato Spirit Co. London Dry Gin, 45%	32
<i>lemon zest, rooibos, myrrh</i>		<i>lemon zest, cardamom, juniper</i>	
◊ Keepr's 1606 Gin, 43%	38	◊ The Tottering Sharpener Gin, 45%	26
<i>lemon peel, orange peel, angelica</i>		<i>coriander, lemon peel, lime flower</i>	
◊ King of Soho Gin, 42%	22	◊ Trevethan Cornish Gin, 43%	28
<i>grapefruit peel, angelica, cassia</i>		<i>elderflower, gorse, lemon peel</i>	
Kokoro Gin, 42%	22	◊ Vryheid Gin, 44%	28
<i>sansho berries, almond, liquorice</i>		<i>sweet lemon rind, oak, orange blossom honey</i>	
◊ Little Bird London Dry Gin, 41.6%	22	◊ Weetwood Gin, 42%	26
<i>pink grapefruit, sweet orange peel, ginger</i>		<i>blackcurrants, bitter orange peel, sweet orange peel</i>	
◊ Liverpool Small Batch Gin, 43%	26	Whitley Neill Dry Gin, 42%	22
<i>coriander, orange peel, lemon peel</i>		<i>baobab fruit, cape gooseberries, orange peel</i>	
◊ London 40 Gin, 40%	22	Widges London Dry Gin, 41%	18
<i>almond, nutmeg, angelica</i>		<i>cardamom, orange peel, coriander</i>	
◊ London Hill Dry Gin, 40%	20	◊ Wolf's Nose Gin, 43%	22
<i>lemon peel, sweet orange peel, coriander</i>		<i>hops, coriander, orris root</i>	
◊ Lord Astor London Dry Gin, 42%	22	FRANCE	
<i>cassia, lemon peel, orange peel</i>		◊ Gabriel Boudier Rare Dry Gin, 46.5%	24
◊ Manchester Gin, 42%	24	<i>fennel seed, lemon peel, orange peel</i>	
<i>dandelion, burdock, liquorice</i>		GERMANY	
◊ Marks & Spencer No. 02 Zesty Gin, 41.6%	22	◊ Berliner Brandstifter Berlin Dry Gin, 43.3%	32
<i>orange peel, liquorice, angelica</i>		<i>woodruff, cucumber, malva</i>	
◊ Masons Dry Yorkshire Gin, 42%	26	◊ Brick Gin, 40%	26
<i>cardamom, fennel seed, fresh lime peel</i>		<i>juniper, lemon peel, cubeb</i>	
◊ Newton House Gin, 43.2%	26	◊ Spitzmund Gin, 47%	34
<i>bergamot, grapefruit, peach</i>		<i>hazelnut, plum, nutmeg</i>	

◇ Steinhauser See Gin, 48%	28	◇ Boë Gin, 41.5%	26
<i>balm, lemongrass, lemon pepper</i>		<i>grains of paradise, orange peel, almond</i>	
◇ Sul Gin, 43%	28	◇ Daffy's Small Batch Premium Gin, 43.2%	26
<i>rockrose, allspice, lemon peel</i>		<i>lebanese mint, spanish lemon, cassia</i>	
◇ The Duke Munich Dry Gin, 45%	28	◇ Edinburgh Christmas Gin, 43%	28
<i>orange blossom, cubeb, ginger</i>		<i>frankincense, myrrh, lavender</i>	
◇ Van Laack Dry Gin, 42%	38	Gordon's London Dry Gin, 37.5%	18
<i>juniper</i>		<i>ginger, angelica, orange peel</i>	
Windspiel Gin, 47%	28	◇ Gordon's Traveller's Edition, 47%	22
<i>ginger, lemon peel, coriander</i>		<i>ginger, angelica, orange peel</i>	
HONG KONG		◇ Hrafn Thought & Memory Gin, 49%	30
◇ Two Moons Gin, 45%	36	<i>mandarin, cardamom, cinnamon</i>	
<i>tangerine peel, coriander, vanilla</i>		◇ Kinrara Highland Gin Artist's Edition, 43%	28
INDIA		<i>orange, lemon, angelica</i>	
Greater Than Gin, 40%	22	◇ LoneWolf Gin, 44%	24
<i>chamomile, ginger, orange peel</i>		<i>pine needles, lemon peel, grapefruit peel</i>	
IRELAND		NB Gin, 42%	24
◇ Echlinville Single Estate Irish Pot Still Gin, 46%	32	<i>cardamom, grains of paradise, cassia</i>	
<i>elderflower, lemon peel, sweet kelp seaweed</i>		◇ Pickering's Gin, 42%	22
◇ Feckin Irish Gin, 40%	26	<i>clove, lemon peel, lime peel</i>	
<i>fresh lemon, cassia, angelica</i>		Rock Rose Summer Gin, 41.5%	24
◇ Jawbox Gin, 43%	22	<i>lemon balm, clover, lemon thyme</i>	
<i>cardamom, lemon peel, liquorice</i>		◇ Seven Crofts Gin, 43%	28
◇ Shortcross Small Batch Gin, 46%	24	<i>pink pepper, cubeb, lemon peel</i>	
<i>elderflower, elderberry, orange peel</i>		Shetland Reel Gin, 43%	22
ITALY		<i>applemint, orange peel, lemon peel</i>	
Family of Hounds, 42%	24	Shetland Reel Simmer Gin, 49%	26
<i>lavender, orange peel, pink grapefruit</i>		<i>orange peel, liquorice, coriander</i>	
Milano Giass Dry Gin, 42%	30	◇ Still River Naked Gin, 43%	28
<i>melissa leaf, golden apple, hibiscus</i>		<i>grapefruit, cassia, coriander</i>	
◇ Occitan London Dry Gin, 42%	22	◇ Strathearn Classic Gin, 40%	24
<i>cardamom, orange peel, lemon peel</i>		<i>lemon, grapefruit, star anise</i>	
NETHERLANDS		SOUTH AFRICA	
◇ Goodmans Gin, 44%	22	◇ Bloedlemoen Handcrafted Gin, 43%	28
<i>cardamom, liquorice, grains of paradise</i>		<i>blood orange, orange peel, grains of paradise</i>	
◇ Three Corner Dry Gin, 42%	28	◇ Cape Town Classic Dry Gin, 43%	28
<i>juniper, lemon zest</i>		<i>dried rhino bush, cardamom, cassia</i>	
NEW ZEALAND		Hope On Hopkins London Dry Gin, 43%	24
◇ Blenheim Bay Gin, 42.5%	26	<i>lemon verbena, coriander, rosemary</i>	
<i>hyssop, bitter orange peel, sweet orange peel</i>		◇ Time Anchor Distillery London Dry Gin, 43%	26
◇ Juno Gin, 40%	26	<i>sweet orange zest, bitter orange zest, lemon zest</i>	
<i>kaffir lime leaf, green cardamom, manuka</i>		SPAIN	
◇ Karven Dry Gin, 40.8%	24	◇ 5th Earth Citrus Gin, 42%	26
<i>manuka flower, lemon, orange</i>		<i>grapefruit peel, mandarin peel, lemon peel</i>	
◇ The Source Pure Cardrona Gin, 47%	24	◇ 7D Gin, 40%	28
<i>rosehip, orange zest, lemon zest</i>		<i>sweet orange, lemon, lavender</i>	
ROMANIA		◇ Botanic Premium London Dry Gin, 40%	26
Wembley London Dry Gin, 40%	20	<i>cedar, buddha's hand, mango</i>	
<i>coriander, orange, star anise</i>		◇ Bruni Collin's Gin, 42.8%	24
SCOTLAND		<i>tangerine, kaffir lime, vanilla</i>	
◇ Alexander's Gin, 44.4%	28	◇ Master's Gin, 40%	22
<i>honey, orange, juniper</i>		<i>cardamom, bitter orange peel, sweet orange peel</i>	

LONDON DRY - CITRUS . FLORAL

◇ Modernessia Gin, 40%	28	Burleighs Distiller's Cut Gin, 47%	28
<i>distilled honey, chamomile, lemon verbena</i>		<i>silver birch, dandelion, elderberry</i>	
◇ Nura Menorca Dry Gin, 40%	24	◇ Capreolus Garden Tiger Dry Gin, 47%	32
<i>grapefruit, lemon blossom, coriander</i>		<i>blood orange, tilia, cardamom</i>	
◇ Siderit Gingerlime Gin, 43%	36	◇ Ealing Gin, 42%	28
<i>asian ginger, lime, pink pepper</i>		<i>chamomile, scented rose, mint</i>	
USA		◇ Gin Lane 1751 London Dry Gin, 40%	26
◇ Aria Portland Dry Gin, 45%	28	<i>star anise, coriander, bitters</i>	
<i>cubeb, orris root, cassia</i>		◇ Hammer & Son Geranium Gin, 44%	22
Barton Gin, 40%	26	<i>geranium, angelica, lemon peel</i>	
<i>fennel seed, anise, lemon peel</i>		◇ Hidden Curiosities Gin, 42%	30
Bluecoat Dry Gin, 47%	22	<i>yuzu, pink pepper, lavender</i>	
<i>sweet orange peel, bitter orange peel, chamomile</i>		◇ Knockeen Hills Heather Gin, 47.3%	24
◇ Cardinal American Gin, 42%	26	<i>heather, angelica, savory</i>	
<i>coriander, apricot pit, clove</i>		◇ Liverpool Complex Organic Gin, 43%	28
◇ Liberty Gin, 45%	26	<i>coriander, cardamom, cassia</i>	
<i>angelica, grains of paradise, lemon peel</i>		◇ Mayfair Dry Gin, 40%	26
◇ No. 209 Whitechapel Victorian Dry Gin, 45%	28	<i>angelica, coriander, orris powder</i>	
<i>walnut, lemon verbena, juniper</i>		◇ Military Spirit Gin, 43%	26
◇ Swallowtail London Dry Gin, 45%	22	<i>lime flower, gorse, heather</i>	
<i>orange peel, grapefruit peel, cassia</i>		◇ Neat Gin, 40%	28
◇ Warwick Gin, 40%	22	<i>cardamom, angelica, cassia</i>	
<i>angelica, cardamom, lemon peel</i>		◇ Spitfire Heritage Gin, 40%	28
WALES		<i>borage, rosemary, rose petal</i>	
Brecon Gin, 40%	26	◇ Stratford Gin, 45%	36
<i>lemon peel, orange peel, cinnamon</i>		<i>rose, lemon balm, lovage</i>	
		◇ Swordsman London Dry Gin, 40%	22
		<i>coriander, savory, angelica</i>	
		◇ Ten Tor Seasonal Spring Gin, 42%	28
		<i>hyssop, star anise, scots pine needle</i>	
		◇ That Boutique-y Expeditionary Gin, 44.5%	32
		<i>lavender, mint, grains of paradise</i>	
		◇ That Boutique-y Monastic Gin, 40%	28
		<i>quince, rosehip, coriander</i>	
		◇ The Corinthian London Dry Gin, 40%	24
		<i>lemon balm, cubeb, lime flower</i>	
		◇ The Lakes Explorer Edition Gin, 47.1%	26
		<i>bilberry, heather, meadowsweet</i>	
		◇ The Lakes Gin, 43.7%	22
		<i>bilberry, heather, meadowsweet</i>	
		◇ Wardington's Ludlow Dry Gin, 42%	26
		<i>gorse, lemon peel, orange peel</i>	
		◇ Willem Barentsz Premium Gin, 43%	24
		<i>jasmine, coriander, liquorice</i>	
		GERMANY	
		Monkey 47 Gin, 47%	24
		<i>pomelo, lemon balm, jasmine</i>	
		Niemand Dry Gin, 46%	32
		<i>rosemary, sandalwood, vanilla</i>	
		◇ Siegfried Rheinland Dry Gin, 41%	34
		<i>linden bloom, thyme, ginger</i>	
		◇ Triple Peak London Dry Gin, 44%	32
		<i>elderberry, sea buckthorn, rosehip</i>	

FLORAL

BOUQUET, PERFUMED BLOOMS, PETALS

AUSTRALIA

- ◇ Japhet White Gin, 46% 34
saltbush, lavender, lemon myrtle

BELGIUM

- ◇ 1836 Gin, 43% 28
orange peel, lavender, elderflower
- ◇ Mont-Saint-Jean Waterloo Gin, 42% 30
lavender, lemon peel, aniseed

ENGLAND

- ◇ Adnam's Copper House Dry Gin, 40% 24
hibiscus, cardamom, orange peel
- ◇ Adnam's First Rate Copper Gin, 48% 26
vanilla pod, fennel seed, thyme
- ◇ Bishop's Gin, 40.7% 32
nasturtium, lemongrass, lemon
- Bloom London Dry Gin, 40% 22
chamomile, pomelo, honeysuckle
- ◇ Bombay Laverstoke Mill Limited Edition, 49% 68
almond, lemon peel, liquorice
- Bombay Sapphire Gin, 40% 20
almond, lemon peel, liquorice
- Bombay Star of Bombay Gin, 47.5% 24
ambrette seed, bergamot, lemon peel

GREECE			
Old Sport Gin, 42%	20		
<i>mastic, bitter orange peel, cinnamon</i>			
IRELAND			
◊ Ha'Penny Gin, 41%	28		
<i>rhubarb, lavender, dandelion</i>			
◊ The Exiles Irish Gin, 41.3%	26		
<i>shamrock, lemon zest, black pepper</i>			
LIECHTENSTEIN			
◊ Liechtenstein Dry Gin, 47%	48		
<i>lavender, elderflower, chamomile</i>			
NETHERLANDS			
Bobby's Schiedam Dry Gin, 42%	24		
<i>lemongrass, cubeb, rosehip</i>			
◊ Driftwood Donkey Jack Gin, 45%	30		
<i>angelica, sweet orange peel, lemon zest</i>			
◊ Nolet's Silver Dry Gin, 47.6%	30		
<i>rose, white peach, orris</i>			
NEW ZEALAND			
Broken Heart Gin, 40%	24		
<i>lavender, nelson hops, pimento</i>			
◊ Reid + Reid Rev Dawson's Gin, 42%	26		
<i>fresh orange peel, fennel seed, liquorice</i>			
SCOTLAND			
◊ Blackwoods 2012 Vintage 40% Gin, 40%	28		
<i>wild water mint, sea pink, angelica</i>			
◊ Crossbill Small Batch Highland Dry Gin, 43.8%	28		
<i>rosehip, juniper</i>			
◊ Darnley's View Gin, 40%	24		
<i>elderflower, lemon peel, coriander</i>			
◊ Fidra Gin, 42%	28		
<i>rosehip, sea buckthorn, lemon thyme</i>			
◊ Gorse Gin, 43.1%	26		
<i>gorse, elderflower, chamomile</i>			
◊ Hills & Harbour Gin, 40%	26		
<i>seaweed, noble fir, mango</i>			
◊ Inshriach Original Gin, 43%	26		
<i>douglas fir, rosehip, juniper</i>			
◊ Kintyre Gin, 43%	26		
<i>lemon peel, bitter orange, sorrel</i>			
◊ Kirkjuvagr Orkney Gin, 43%	26		
<i>ramanan rose, borage flower, angelica</i>			
◊ Lussa Gin, 42%	34		
<i>sea lettuce, pine, water mint</i>			
Rock Rose Gin, 41.5%	22		
<i>rhodiola rose, rowanberries, sea buckthorn</i>			
Rock Rose Winter Gin, 41.5%	24		
<i>spruce tips, rhodiola rose, juniper</i>			
Shetland Reel Ocean Sent Gin, 49%	24		
<i>seaweed, coriander, apple mint</i>			
Tanqueray Gin, 43.1%	20		
<i>liquorice, angelica, coriander</i>			
The Botanist Gin, 46%	22		
<i>mugwort, meadowsweet, lady's bedstraw flower</i>			
SPAIN			
◊ 5th Water Floral Gin, 42%	28		
<i>rose petal, violet petal, juniper</i>			
◊ No. 0 London Dry Gin, 40.8%	22		
<i>cinchona bark, cinnamon, iris</i>			
◊ Only Gin, 43%	26		
<i>jasmine, hibiscus, violet</i>			
◊ Siderit Hibiscus Gin, 43%	36		
<i>hibiscus, mountain ironwort, pink pepper</i>			
USA			
Greenhook Ginsmiths Gin, 47%	24		
<i>elderflower, cinnamon, chamomile</i>			
WALES			
◊ Eccentric London Dry Gin, 42%	26		
<i>meadowsweet, liquorice, lemon peel</i>			
<div style="border: 1px solid black; padding: 5px; width: fit-content; margin: 0 auto;"> <p>HERBAL FRESH BUNCH, DRIED LEAVES, VEGETAL</p> </div>			
AUSTRALIA			
◊ Archie Rose Signature Dry Gin, 42%	26		
<i>pepperleaf, river mint, lemon myrtle</i>			
◊ Kis O Gin, 43.5%	34		
<i>wild rosemary, angelica, coriander</i>			
◊ Loch Distillery Small Batch Gin, 41%	22		
<i>star anise, nutmeg, ginger</i>			
Melbourne Gin Company Dry Gin, 42%	22		
<i>rosemary, honey myrtle, macadamia nut</i>			
BELGIUM			
◊ Biercée Less is More Gin, 44%	36		
<i>juniper, orange blossom, black pepper</i>			
◊ Cockney's Gin, 44.2%	28		
<i>grapefruit, grains of paradise, coriander</i>			
CROATIA			
◊ Old Pilots Gin, 45%	28		
<i>olive leaf, sage, bitter orange peel</i>			
ENGLAND			
7 Dials London Dry Gin, 46%	26		
<i>coriander, lavender, almond</i>			
◊ Anno Kent Dry Gin, 43%	26		
<i>lavender, lemon peel, black pepper</i>			
◊ Berkeley Square Gin, 46%	46		
<i>basil, lavender, kaffir lime leaf</i>			
Bombay Original Dry Gin, 37.5%	20		
<i>angelica, liquorice, lemon peel</i>			
Bombay Sapphire East Gin, 42%	26		
<i>black pepper, lemongrass, almond</i>			
Boodles British Gin, 40%	22		
<i>nutmeg, rosemary, sage</i>			

LONDON DRY - HERBAL

◇ Brighton Gin, 40%	26	◇ The Distillery Super Dry Gin, 42%	32
<i>angelica, lime peel, milk thistle</i>		<i>gentian root, rooibos, lemon peel</i>	
◇ Burleighs Leicester Dry Gin, 40%	30	◇ The Original Barber's Gin, 40%	24
<i>thyme, sage, nutmeg</i>		<i>coriander, thyme, angelica</i>	
◇ Cambridge Dry Gin, 42%	26	◇ Thomas Dakin Gin, 42%	24
<i>lemon verbena, rose petal, basil</i>		<i>horseradish, sweet orange peel, cubeb</i>	
◇ Chilgrove Dry Gin, 44%	24	◇ Thunderflower Gin, 42%	26
<i>mint, savory, fresh lime</i>		<i>sage, elderflower, liquorice</i>	
◇ City of London Christopher Wren Gin No.2, 45.3%	28	◇ Twisting Spirits Earl Grey Gin, 41.5%	26
<i>liquorice, angelica, nutmeg</i>		<i>earl grey, cardamom, cubeb</i>	
◇ City of London Square Mile Gin, 47.3%	28	◇ Woodhill Gin, 41.7%	42
<i>lemon peel, orange peel, grapefruit peel</i>		<i>pink pepper, lemongrass, rosebud</i>	
◇ Conker Spirits Dorset Dry Gin, 40%	28	FRANCE	
<i>elderberry, lime peel, gorse flower</i>		◇ BR Essential London Dry Gin, 40%	36
◇ Cooper King Valour Dry Gin, 40%	26	<i>allspice, thyme, jamaican pepper</i>	
<i>lemongrass, basil, honey</i>		GERMANY	
◇ Crafty Fox London Dry Gin, 42%	26	◇ Diamond London Dry Gin, 45%	22
<i>lime peel, pink pepper, bay leaf</i>		<i>juniper</i>	
◇ Dockyard Gin, 41.2%	30	◇ Lebensstern London Dry Gin, 43%	24
<i>elderflower, orris root, grains of paradise</i>		<i>black pepper, orange zest, elderflower</i>	
East London Liquor Co. Batch No. 2 Gin, 47%	24	◇ The Duke Rough Gin, 42%	26
<i>bay leaf, thyme, fennel seed</i>		<i>coriander, orange peel, hops</i>	
Fishers Gin, 44%	28	IRELAND	
<i>spignel, bog myrtle, rock samphire</i>		◇ An Dulaman Irish Martime Gin, 43.2%	28
◇ Four Feathers London Dry Gin, 40%	24	<i>sugar kelp, moss, dulse seaweed</i>	
<i>basil, thyme, gorse flower</i>		Glendalough Wild Botanical Gin, 41%	28
Kew Organic Gin, 46%	24	<i>liquorice, elderflower, watermint</i>	
<i>galangal, passion flower, lavender</i>		ITALY	
◇ Masons Dry Yorkshire Lavender Edition Gin, 42%	24	◇ Berto Distilled Dry Gin, 43%	24
<i>lavender, fennel seed, fresh lime peel</i>		<i>wormwood, rosemary, iris</i>	
◇ MEWS Gin, 38%	22	Luxardo London Dry Gin, 43%	20
<i>pink pepper, cassia, lavender</i>		<i>cinchona, bitter orange, iris</i>	
Mombasa Club Colonel's Reserve Gin, 43.5%	26	Poli Marconi 46 Gin, 46%	24
<i>caraway seed, clove, cumin</i>		<i>muscat grape, mountain pine, cembra pine</i>	
Mombasa Club Gin, 41.5%	22	Vallombrosa Gin, 47%	22
<i>angelica, clove, cumin</i>		<i>juniper</i>	
◇ Plymouth Old Presentation Bottle Gin, 41.2%	26	VII Hills Gin, 43%	26
<i>liquorice, angelica, sweet orange peel</i>		<i>pomegranate, rosehip, celery</i>	
Pothecary Gin, 44.8%	30	◇ Winestillery London Dry Gin, 42%	30
<i>lavender, tilia flower, lemon peel</i>		<i>menthol, lemon peel, orange peel</i>	
◇ Renegade Gin, 42%	24	NETHERLANDS	
<i>grains of paradise, cardamom, angelica</i>		◇ Feller Gin, 40%	26
Sabatini Gin, 41.3%	24	<i>blood orange peel, juniper, coriander</i>	
<i>thyme, sage, lavender</i>		◇ Hanami Gin, 43%	24
◇ Tarquins Handcrafted Cornish Gin, 42%	24	<i>cherry blossom, bitter orange, angelica</i>	
<i>violets, orange zest, angelica</i>		◇ Sloane's Dry Gin, 40%	22
◇ That Boutique-y Botanical Democracy Gin, 46.2%	34	<i>vanilla, liquorice, orris</i>	
<i>lime, fennel seed, coriander</i>		◇ V2C Dutch Dry Gin, 41.5%	26
◇ The Distillery King Theodore of Corsica Gin, 42%	32	<i>laurel, st. john's wort, angelica</i>	
<i>bergamot, basil, sea salt</i>		NORWAY	
◇ The Distillery MOS Blend Gin, 40%	30	◇ Vidda Tørr Gin, 43%	26
<i>wormwood, fennel seed, grains of paradise</i>		<i>heather, yarrow, chamomile</i>	

SCOTLAND			
◇ Achroous Gin, 41%	28		
<i>sichuan pepper, fennel seed, coriander</i>			
◇ Avva Scottish Gin, 43%	28		
<i>red clover, lime peel, mint</i>			
◇ Edinburgh Seaside Gin, 43%	26		
<i>scurvy grass, ground ivy, cardamom</i>			
◇ Gilt Gin, 40%	30		
<i>liquorice, cardamom, orris root</i>			
◇ Ginerosity Gin, 40%	28		
<i>heather, clove, cinnamon</i>			
◇ Isle of Arran Gin, 42%	26		
<i>noble fir, lemon balm, hogweed</i>			
◇ King's Hill Gin, 44%	26		
<i>liquorice, elderflower, gorse</i>			
◇ Lin Gin, 43%	26		
<i>meadowsweet, lemon peel, heather</i>			
◇ Persie Herby & Aromatic Gin, 40%	24		
<i>rosemary, basil, green olive</i>			
◇ Pickering's Original 1947 Gin, 42%	22		
<i>fennel seed, anise, clove</i>			
Rock Rose Mey Selections Gin, 41.5%	26		
<i>applemint, rowanberry, sweet cicely</i>			
◇ Sea Glass Gin, 43%	24		
<i>liquorice, sweet cicely, applemint</i>			
Stirling Gin, 43%	22		
<i>basil, nettle, orange peel</i>			
◇ Tanqueray Bloomsbury Gin, 47.3%	28		
<i>coriander, liquorice, winter savory</i>			
◇ Tanqueray Lovage Gin, 47%	30		
<i>lovage, liquorice, angelica</i>			
SINGAPORE			
SoulSister Spirits Gin, 40%	22		
<i>ceylon cinnamon, tamarind, kaffir lime leaf</i>			
SOUTH AFRICA			
◇ Stretton's London Dry Gin, 43%	22		
<i>sugar cane, angelica, juniper</i>			
SPAIN			
◇ 5th Air Black Gin, 40%	28		
<i>algae, juniper, coriander</i>			
◇ Macaronesian White Gin, 40%	24		
<i>cardamom, orange peel, liquorice</i>			
◇ NUT London Dry Gin, 45%	22		
<i>thyme, green walnut, olive leaf</i>			
◇ Platinum TV Gin, 43%	22		
<i>bitter almond, cassia, ginger</i>			
◇ Siderit London Dry Gin, 43%	36		
<i>rock tea, hibiscus, pink pepper</i>			
◇ The Botanical's Premium London Dry Gin, 42.5%	28		
<i>mango, buddha's hand, thyme</i>			
SWITZERLAND			
◇ 1616 Gin, 49.1%	30		
<i>coriander, liquorice, cassia</i>			
◇ Bonifaz Dry Gin, 41%	38		
<i>juniper</i>			
◇ Gin 27 Premium Appenzeller Dry Gin, 43%	28		
<i>coriander, orange peel, cardamom</i>			
USA			
◇ Death's Door Gin, 47%	28		
<i>fennel seed, coriander, juniper</i>			
New Deal 33 Gin, 46%	22		
<i>juniper, coriander, cardamom</i>			
◇ Vim & Petal Gin, 42%	22		
<i>grapefruit, bergamot, tarragon</i>			
WALES			
◇ Da Mhile Farmhouse Botanical Organic Gin, 42%	24		
<i>rose, fennel seed, star anise</i>			
<div style="border: 1px solid black; padding: 10px; margin: 10px auto; width: fit-content;"> <p style="text-align: center;">SPICED PEPPERS, BAKING SPICES, FRAGRANT</p> </div>			
AUSTRALIA			
◇ Moore's Australian Dry Gin, 40%	22		
<i>cinnamon myrtle, macadamia nut, illawarra plum</i>			
AUSTRIA			
Farthofer Organic Premium Gin, 40%	24		
<i>javanese pepper, orange rind, lavender</i>			
BELGIUM			
◇ Biercée Thesis & Antithesis Gin, 44%	38		
<i>hops, poppy, cocoa</i>			
◇ Filliers Pine Blossom Dry Gin 28, 43.7%	36		
<i>pine blossom, juniper, vanilla</i>			
ENGLAND			
◇ Batch Premium Gin, 40%	28		
<i>frankincense, myrrh, allspice</i>			
◇ Bimber London Dry Gin, 42%	36		
<i>cinnamon, nutmeg, coriander</i>			
Bulldog Gin, 40%	22		
<i>dragon eye, poppy, lotus leaves</i>			
Cotswolds Gin, 46%	24		
<i>black pepper, lavender, grapefruit zest</i>			
Cuckoo Spiced Gin, 42%	24		
<i>clove, black pepper, lemongrass</i>			
◇ Fifty Eight Gin, 43%	26		
<i>vanilla, pink grapefruit, bergamot</i>			
◇ Finsbury Platinum Gin, 47%	24		
<i>lemon peel, black pepper, coriander</i>			
◇ Ginger Ninja Gingery Gin, 42%	26		
<i>ginger, liquorice, black pepper</i>			
◇ GOA Gin, 47%	26		
<i>caraway, cardamom, nutmeg</i>			

LONDON DRY - SPICED . LUSCIOUS

- ◊ Juniper Green Trophy Gin, 43% 22
summer savory, angelica root, coriander
- Langley's Distilled London Dry Gin, 41.7% 22
orris root, nutmeg, cassia
- Opihr Oriental Spiced Gin, 40% 24
cardamom, grapefruit peel, cubeb
- ◊ Salcombe Start Point Gin, 44% 26
cubeb berry, lime peel, fresh grapefruit
- ◊ Speakeasy Turkey Trot Gin, 44% 26
raisins, cinnamon, clove
- ◊ St. Giles Gin, 42% 30
lemongrass, black pepper, pink pepper
- ◊ The East India Company London Dry Gin, 42% 26
galangal, sweet orange peel, cardamom
- ◊ The Gin Kitchen Gutsy Monkey Winter Gin, 48% 28
black pepper, allspice, ginger
- ◊ Warner Edwards Harrington Dry Gin, 44% 26
green cardamom, black pepper, cinnamon
- ◊ Whittaker's Gin, 42% 22
thyme, bog myrtle, coriander
- FRANCE**
- ◊ Jin Dea Gin, 40% 26
darjeeling, cardamom, ginger
- ◊ Magellan Gin, 41.3% 28
iris flower, clove, cinnamon
- GERMANY**
- ◊ Cumberland Hannover Dry Gin, 43% 30
elderflower, spruce shoots, pink pepper
- Elephant Gin, 45% 24
pimento berries, devil's claw, buchu
- ◊ Goldberner Gin, 45% 30
cardamom, angelica, bitter orange peel
- ◊ Luum London Dry Gin, 40% 30
almond, coriander, angelica
- ◊ Six Ravens London Dry, 46% 26
coriander, lemon peel, ginger
- NETHERLANDS**
- ◊ Driftwood Chow Hound Gin, 44% 28
cinnamon, cardamom, nutmeg
- ◊ Sylvius Gin, 45% 24
star anise, cinnamon, caraway
- NEW ZEALAND**
- Dancing Sands Dry Gin, 44% 22
peppercorn, angelica, coriander
- ◊ Reid + Reid Native Gin, 42% 26
kawakawa, manuka, horopito
- Scapegrace Dry Gin, 42.2% 22
cinnamon, nutmeg, clove
- SCOTLAND**
- ◊ Darnley's View Spiced Gin, 42.7% 26
ginger, cumin, clove

- ◊ Devil's Staircase Gin, 42% 26
nutmeg, coriander, cardamom
- Edinburgh Gin, 43% 24
heather, milk thistle, pine

SPAIN

- ◊ Jodhpur Gin, 43% 22
ginger, grapefruit peel, bitter almond
- ◊ M5 Gin, 48% 26
cardamom, bitter almond, ginger

SINGAPORE

- Singa Gin, 43% 20
grains of paradise, sarawak pepper, cassia cinnamon

SRI LANKA

- Colombo No. 7 Gin, 43.1% 20
cinnamon, curry leaves, ginger

SWEDEN

- ◊ ND Mountain Dry Gin, 43.5% 36
timut pepper, angelica, birch leaf

USA

- ◊ J. Rieger Midwestern Dry Gin, 46.1% 22
coriander, liquorice, orange peel
- ◊ Knickerbocker Gin, 42.5% 24
fennel seed, clove, nutmeg



ENGLAND

- ◊ Blue Bottle Artisan Dry Gin, 47% 30
vanilla, cubeb, nutmeg
- ◊ Maiden Maidstone Gin, 42% 24
marshmallow, meadowsweet, liquorice
- ◊ Manchester Three Rivers Gin, 40% 22
oats, vanilla, cardamom
- ◊ Sibling Triple Distilled Gin, 42% 26
blueberry, vanilla, fresh lemon
- ◊ Sir Robin of Locksley Gin, 40.5% 24
pink grapefruit, dandelion, elderflower

SCOTLAND

- Caorunn Scottish Gin, 41.8% 22
coul blush apple, heather, dandelion
- ◊ Eden Mill Original Gin, 42% 26
sea buckthorn, lemon balm, orange peel
- ◊ Nerabus Islay Gin, 42% 26
heather, pink grapefruit, coriander
- Rock Rose Spring Gin, 41.5% 24
coltsfoot, dandelion, gorse

SWEDEN

- ◊ Hernö Dry Gin, 40.5% 30
lingonberry, meadowsweet, vanilla

NUTTY

RUSTIC, WOODY, SAVOURY EDGE

ENGLAND

- East London Liquor Co. Batch No.1 Gin, 45% 24
cubeb, darjeeling, grapefruit peel
- ◇ Greensand Ridge London Dry Gin, 40% 26
gorse, honey, cobnuts
- Langley's No. 8 Gin, 42% 20
nutmeg, sweet orange, cassia

SPAIN

- ◇ Vones London Dry Gin, 40% 24
cinnamon, nutmeg, chestnut

EARTHY

DARK RICH SOIL, TURF, WET LEAVES

AUSTRALIA

- ◇ Blind Tiger Organic Gin, 42.7% 30
coriander, angelica, summer savory
- Giniversity London Dry Gin, 40% 22
meen, coriander, orange peel
- Never Never Triple Juniper Gin, 43% 24
juniper, peppercorn, cinnamon
- ◇ Patient Wolf Premium Dry Gin, 41.5% 36
fresh ruby grapefruit, tonka bean, cardamom

ENGLAND

- ◇ 1897 Quinine Gin, 45.8% 30
cinchona bark, lemon peel, grapefruit peel
- Burleighs Export Strength Gin, 47% 28
silver birch, dandelion, elderberry
- ◇ Caspyn Cornish Dry Gin, 40% 24
lemon verbena, japanese tea, hibiscus
- Cremorne Colonel Fox's Gin, 40% 22
liquorice, angelica, bitter orange peel
- ◇ Garden Swift Gin, 47% 32
wormwood, sicilian blood orange zest, tillia cordata
- Gilpin's Westmorland Extra Dry Gin, 47% 28
borage, sage, angelica
- ◇ Gin Lane 1751 Royal Strength Gin, 47% 26
cassia, star anise, sicilian lemon
- ◇ Ish Gin, 41% 24
almond, nutmeg, double juniper
- Japanese Gin, 42% 32
shiso leaf, yuzu, sansho
- ◇ KURO Gin, 43% 26
silver birch bark, charcoal, spruce
- ◇ Langtons No 1 Gin, 40% 22
oak bark, lemon peel, orange peel
- Plymouth Gin, 41.2% 22
liquorice, angelica, sweet orange peel

- ◇ Two Birds London Dry Gin, 40% 24
orris root, juniper, coriander

FRANCE

- ◇ Diplome Gin, 44% 26
saffron, fennel seed, whole lemon

GERMANY

- ◇ Boar Dry Gin, 43% 44
black forest truffles, lavender, lemon peel
- ◇ Hoos London Gin, 44.4% 30
pine, fennel seed, cardamom
- ◇ Wild Child Gin, 43.5% 28
rosemary, lemon, bergamot

NETHERLANDS

- ◇ Zuidam Dutch Courage Dry Gin, 44.5% 24
angelica, coriander, vanilla

SCOTLAND

- ◇ Colonsay Gin, 47% 32
calamus root, coriander, orange peel
- ◇ Esker Gin, 42% 28
silver birch sap, heather, nettle
- ◇ Granite North Gin, 41.9% 26
fir needles, lemon pith, pine
- ◇ Loch Ness Legends Gin, 43.3% 26
heather, hawthorn berry, silver birch sap
- ◇ Makar Glasgow Gin, 43% 22
black pepper, rosemary, coriander
- ◇ McQueen Signature Dry Gin, 42% 26
lime, coriander, cassia

SOUTH AFRICA

- ◇ Pienaar & Son Empire Gin, 43% 26
juniper, angelica, pine nuts

WALES

- Brecon Botanicals Gin, 43% 24
orange peel, saffron, cinnamon

GRASSY

GREENNESS, TALL GRASS, MEADOW

ENGLAND

- ◇ Beckett's London Dry Gin, 40% 28
mint, lime, sweet orange peel
- ◇ Bullards Norwich Dry Gin, 42.5% 26
tonka bean, cardamom, lemon peel
- ◇ Durham Gin, 40% 22
celery seed, pink pepper, elderflower
- ◇ Elemental Cornish Gin, 42% 26
orris root, cassia, coriander
- ◇ Faith & Sons Gin, 42.2% 32
lemon verbena, liquorice, mandarin peel
- ◇ Forest (Bond) Gin, 42% 32
moss, liquorice, cinnamon

LONDON DRY - GRASSY . BERRIES . FRUITY

- ◇ Hedgerow Gin, 42% 26
meadow hay, crab apple, nettle
- ◇ Poetic License Northern Dry Gin, 43.2% 24
cardamom, cubeb, dried lime
- ◇ Ten Tor Seasonal Autumn Gin, 42% 28
rosehip, hawthorn berry, blackberry
- ◇ Twisting Spirits Douglas-Fir Gin, 41.5% 26
douglas fir needles, cardamom, sarsaparilla root

GERMANY

- ◇ Skin Gin, 42% 30
mint, lime peel, grapefruit peel
- ◇ Skin Gin Christmas Blue 2017, 42% 32
grapefruit peel, coriander, mint
- ◇ Woodland Sauerland Dry Gin, 45.3% 26
sorrel, dandelion root, spruce tips

NETHERLANDS

- ◇ Black Tomato Gin, 42.3% 26
black tomato, salt, citrus

SOUTH AFRICA

- ◇ A Mari Atlantic Ocean Gin, 43% 38
allspice, fynbos, tangerine

SPAIN

- ◇ Ginraw Gin, 42.3% 26
kaffir lime leaf, laurel, bay leaf

USA

- ◇ Greylock Gin, 40% 22
cinnamon, orange peel, angelica

WALES

- ◇ Pollination Gin, 45% 28
gorse, heather, hawthorn

BERRIES

PLUMP, ROUNDNESS, JAMMY

ENGLAND

- ◇ Stonewall London Dry Gin, 40% 26
sea buckthorn, almond, blueberry

MOLDOVA

- ◇ Tower Bridge Gin, 40% 22
root bark, sweet woodruff, star anise

SPAIN

- ◇ 5th Fire Red Fruits Gin, 42% 28
blueberry, raspberry, blackberry

FRUITY

EXOTIC, AUDACIOUS, NOT FRUIT FLAVOURED

ENGLAND

- ◇ Juni 93 London Dry Gin, 42.5% 26
cornelian cherry, elderberry, lime peel
- ◇ Leeds Gin, 40% 24
rhubarb, ginger, coriander
- ◇ Oxley Gin, 47% 26
lemon zest, orange zest, grapefruit zest

SCOTLAND

- ◇ Caithness Highland Gin, 40% 26
orange peel, lime peel, rhubarb
- ◇ Eenoo Gin, 43% 26
honey, heather, raspberry
- ◇ El:Gin, 40% 26
strawberry, oats, raspberry
- ◇ Kinrara Highland Dry Gin, 41.5% 26
rosehip, rowanberry, orange peel

MODERN

We define (loosely, admittedly) modern gin as one that doesn't fit the juniper-forward London Dry Gin style. Gins that celebrate or highlight an abundance of botanicals, or have an emphasis on fruit or spice, or gins that champion location or technique.

CITRUS

BRIGHT, ZINGY, REFRESHING

AUSTRALIA			
◊	1832 Wolgan Gin, 40%	36	
	<i>finger lime, lemon-scented tea tree, liquorice</i>		
◊	313 Dry Gin, 40%	24	
	<i>lemon zest, cardamom, vanilla</i>		
◊	Antipodes Gin, 45%	34	
	<i>sweet orange peel, lemon oil, pepperberry</i>		
◊	Archie Rose ATLAS Tailored Orange Gin, 43%	28	
	<i>navel orange, bergamot peel, curaçao peel</i>		
◊	Archie Rose Horisumi Summer Gin, 44%	28	
	<i>white peach, yuzu peel, kumquat</i>		
◊	Archie Rose Summer Gin Project Coast Gin, 40%	32	
	<i>strawberry gum, sea lettuce, lemon myrtle</i>		
◊	Bass & Flinders Soft and Smooth Gin, 40%	34	
	<i>lime zest, coriander, pepperberry</i>		
◊	Fossey's Original Gin Elixir, 40%	36	
	<i>tangelo, lemon myrtle, bergamot</i>		
	Four Pillars Rare Dry Gin, 41.8%	20	
	<i>lemon myrtle, pepperberry leaf, fresh orange</i>		
◊	Four Pillars X Kisume Pure Gin, 43.8%	28	
	<i>sansho pepper, ume, tasmanian wasabi</i>		
	Giniversity Botanical Gin, 42%	24	
	<i>sandalwood, eucalyptus, lemon myrtle</i>		
◊	Great Southern Dry Gin, 40%	26	
	<i>meen, cinnamon, fresh lemon</i>		
◊	Hurdle Creek Still Yardarm Gin, 42%	36	
	<i>lemon myrtle, pink pepper, hop flower</i>		
◊	Lark Tasmanian Pepperberry Gin, 40%	24	
	<i>pepperberry, lemon peel, ginger</i>		
	Manly Spirits Coastal Citrus, 43%	28	
	<i>lemon aspen, meyer lemon, sea parsley</i>		
◊	Noosa Heads Fortune Signature Gin, 41%	32	
	<i>lemon peel, honeydew, green tea</i>		
	Old Young's 1829 Gin, 45%	24	
	<i>liquorice, lemon myrtle, aniseed</i>		
	Prohibition Gin, 42%	24	
	<i>lavender, pink pepper, blood orange</i>		
◊	Tamborine Mountain Distillery Lilly Pilly Gin, 40%	24	
	<i>riberry, anise, orange peel</i>		
◊	Twenty Third St. Distillery Signature Gin, 40%	22	
	<i>mandarin, fresh lime, coriander</i>		
	West Winds Sabre Gin, 40%	22	
	<i>wattleseed, lemon peel, lemon myrtle</i>		
BELGIUM			
◊	Belgin Fresh Citrus Gin, 38%	26	
	<i>amalfi lemon peel, verbena, lemongrass</i>		
	Copperhead Gin, 40%	26	
	<i>coriander, orange peel, cardamom</i>		
	Forest Dry Summer Gin, 42%	24	
	<i>blood orange, bergamot blossom, ginger</i>		
	Forest Dry Winter Gin, 42%	24	
	<i>cinnamon, grapefruit peel, angelica</i>		
◊	Lindemans Premium Distilled Gin, 40%	34	
	<i>cherry stone, cardamom, tailed pepper</i>		
◊	Og'ir Gin, 40%	22	
	<i>pomegranate, blood orange, lemongrass</i>		
◊	Ph. Collet's London Dry Gin, 46%	32	
	<i>sweet orange peel, angelica, rosemary</i>		
◊	Uppercut Dry Gin, 49.6%	34	
	<i>damiana leaf, strawberry leaf, liquorice</i>		
BRAZIL			
	Amázzoni Gin, 42%	26	
	<i>cacao, brazilian chestnut, water lily</i>		
	Amázzoni Rio Negro Gin, 42%	28	
	<i>victoria regia, tangerine, brazil nut</i>		
CANADA			
◊	Iceberg Gin, 40%	22	
	<i>angelica, coriander, orange peel</i>		
ENGLAND			
◊	Ant Gin, 42%	30	
	<i>black ant, clementine, granny smith apple</i>		
	Chase Seville Marmalade Gin, 40%	22	
	<i>elderflower, bitter almond, liquorice</i>		
	Chase Williams Pink Grapefruit & Pomelo Gin, 40%	22	
	<i>pink grapefruit, pomelo, lemon peel</i>		
◊	Ish Limao Gin, 40%	24	
	<i>lime oil, orange peel, lemon peel</i>		

MODERN - CITRUS

◇ Jensen's Bermondsey Gin, 43%	22	Le Gin de Christian Drouin Gin, 42%	22
<i>almond, liquorice, angelica</i>		<i>vanilla, almond, rose</i>	
◇ Lemon Grove Gin, 40%	24	GERMANY	
<i>fresh lemon, nutmeg, cassia</i>		◇ Clocker's Gin, 44%	28
◇ Liverpool Small Batch Valencian Orange Gin, 46%	26	<i>orange peel, lemon peel, coriander</i>	
<i>valencia orange, orange peel, liquorice</i>		◇ Clockers 3-a-gin St. Pauli Gin, 44%	42
Martin Miller's Gin, 40%	22	<i>bergamot, mandarin orange, quince</i>	
<i>lemon peel, lime oil, juniper</i>		◇ Friedrichs Dry Gin, 45%	26
Martin Miller's Westbourne Strength Gin, 45.2%	24	<i>rosemary, apple, jasmine</i>	
<i>juniper, cassia, lime oil</i>		ICELAND	
◇ Mermaids Gin, 42%	28	◇ VOR Icelandic Gin, 47%	26
<i>rock samphire, hops, grains of paradise</i>		<i>sweet kelp, rhubarb, birch leaf</i>	
◇ Nelson's Gin, 42.5%	26	IRELAND	
<i>lemongrass, kaffir lime, vanilla</i>		◇ Beara Ocean Gin, 43.3%	28
◇ Potheary Sicilian Blend Gin, 47%	34	<i>sugar kelp, sea salt, fuchsia</i>	
<i>orange peel, gentian, almond</i>		◇ Silver Spear Gin, 40%	26
◇ Sacred Gin, 43.8%	24	<i>fresh lime, coriander, cassia</i>	
<i>cardamom, nutmeg, frankincense</i>		ISRAEL	
◇ Silverback Mountain Strength Gin, 46%	36	◇ Milk & Honey Levantine Gin, 46%	28
<i>sweet orange peel, acacia blossom, lemongrass</i>		<i>verbena, chamomile, hyssop</i>	
◇ Sipsmith Lemon Drizzle Gin, 40.4%	28	ITALY	
<i>dried lemon, lemon verbena, fresh lemon</i>		◇ Boigin Distilled Gin, 40%	30
◇ Steampunk Pirate Rascal Strength Gin, 45%	38	<i>everlasting flower, tangerine peel, orange peel</i>	
<i>grapefruit zest, star anise, orange</i>		Bottega Bacur Gin, 40%	22
◇ That Boutique-y Moonshot Gin, 46.6%	34	<i>sage, myrtle, lemon zest</i>	
<i>moonrock, bitter orange peel, chamomile flower</i>		◇ Malfy Gin, 41%	22
◇ That Boutique-y World Gin Day Gin, 47.7%	34	<i>orange peel, cassia, liquorice</i>	
<i>sea salt, coriander, angelica</i>		JAPAN	
◇ The Lakes Pink Grapefruit Gin, 46%	24	◇ Ko-On IP 02, 45%	48
<i>bitter orange, sweet orange, orris</i>		<i>hetsuka bitter orange, yuzu, green tea</i>	
◇ The Spectator Gin, 42.4%	22	Sakurao Original Gin, 47%	24
<i>earl grey, lemon balm, milk thistle</i>		<i>dai dai, hinoki, shiso</i>	
◇ Wardington's Ludlow Citrus & Pomegranate Gin, 42%	26	◇ Tatsumi Gin Nature, 47.5%	42
<i>pink grapefruit peel, pomegranate, orange peel</i>		<i>kaffir lime, rose flower, black tea</i>	
◇ Worship Street Whistling Shop Cream Gin, 43.8%	26	◇ The Inland Sea Gin, 46%	36
<i>cream, lemon zest, coriander</i>		<i>yuzu, dried red grape, kombu</i>	
◇ Zymurgorium Marmalade Gin, 40%	32	Wa Bi Gin, 47%	24
<i>marmalade, vanilla, tangerine</i>		<i>kumquat, shell ginger, saigon cinnamon leaf</i>	
ESTONIA		NETHERLANDS	
◇ Crafter's London Dry Gin, 43%	28	Damrak Amsterdam Original Gin, 41.8%	20
<i>veronica, lemon peel, orange peel</i>		<i>aniseed, cinnamon, honeysuckle</i>	
FINLAND		◇ Hermit Gin, 43%	38
◇ Helsinki Gin, 47%	30	<i>coriander, nutmeg, lemon zest</i>	
<i>lingonberry, rose petal, seville orange</i>		◇ Skully London Dry Gin, 41.8%	24
FRANCE		<i>orris, vanilla, citrus</i>	
◇ C'est Nous Gin, 40%	24	◇ Skully Oriental Citrus Gin, 41.8%	24
<i>apple essence, orange zest, lemon zest</i>		<i>yuzu, orange peel, vanilla</i>	
Citadelle Original Gin, 44%	22	◇ Skully Tangerine Twist Gin, 41.8%	24
<i>cardamom, orange peel, violet</i>		<i>chinese mandarin, sweet orange, bitter orange</i>	
◇ Citrum Small Batch Gin, 40%	22	◇ Wagging Finger Exercise V1.0 Gin, 44%	24
<i>red pimento, lime, lemon zest</i>		<i>coriander, cinnamon, orange peel</i>	

NEW ZEALAND			
◊	Lighthouse Gin, 42%	26	
	<i>yen ben lemon, kawakawa, navel orange</i>		
◊	Vaione Pacific Gin, 40.2%	22	
	<i>fresh lime, fresh navel orange, green cardamom</i>		
PERU			
	GIN'CA Gin, 40%	24	
	<i>marigold, lemon verbena, tangelo</i>		
PHILIPPINES			
	ARC Botanical Gin, 45%	22	
	<i>dalandan orange, pomelo, ylang-ylang</i>		
	Crows Gin, 45%	26	
	<i>labuyo chilli pepper, pandan leaf, calamansi</i>		
◊	Ginebra San Miguel Gin, 40%	18	
	<i>juniper, lemon peel, coriander</i>		
◊	Sirena Blue Pea Gin, 43%	24	
	<i>sampaguita, pink pomelo, blue pea flower</i>		
PORTUGAL			
◊	Sharish Dark Sky Gin, 40%	36	
	<i>lemon verbena, vanilla, coriander</i>		
◊	Will's Premium Gin, 40%	28	
	<i>lemon verbena, blackberry, elderflower</i>		
SCOTLAND			
◊	GlenWyvis Limited Edition Gin, 40%	28	
	<i>orange, hawthorn, lemon</i>		
◊	McQueen Sweet Citrus Gin, 42%	26	
	<i>lemongrass, kaffir lime, grapefruit</i>		
◊	Misty Isle Gin, 41.5%	26	
	<i>black pepper, cassia, lemon peel</i>		
	Porter's Gin, 41.5%	22	
	<i>pink pepper, buddha's hand, cinnamon</i>		
◊	Shetland Reel Holly Days Gin, 43%	26	
	<i>apple mint, orange peel, lemon peel</i>		
◊	Strathearn Citrus Gin, 40%	24	
	<i>lemon peel, grapefruit rind, kaffir lime leaf</i>		
	Tanqueray No. TEN Gin, 47.3%	24	
	<i>fresh grapefruit, fresh orange, fresh lime</i>		
	Tanqueray Rangpur Gin, 41.3%	24	
	<i>rangpur lime, angelica, liquorice</i>		
◊	The Gael Signature Scottish Gin, 40%	26	
	<i>heather, lemon peel, cardamom</i>		
SINGAPORE			
	Brass Lion Gin, 40%	24	
	<i>torch ginger flower, lemongrass, tamarind</i>		
	Lime Garden Gin, 43%	20	
	<i>key lime, calamansi, lime</i>		
SLOVENIA			
◊	One Key Gin, 40%	30	
	<i>sicilian lemon peel, coriander, ginger</i>		
SOUTH AFRICA			
◊	Clemengold Citrus Gin, 43%	26	
	<i>sundried clemengold, honey, ground almond</i>		
	Hope on Hopkins African Botanical Gin, 43%	26	
	<i>buchu, kapokbos, citrus peel</i>		
◊	Jorgensen's Distillery Original Gin, 43%	26	
	<i>wild ginger, bitter apricot, calamus root</i>		
	Six Dogs Distillery Karoo Gin, 43%	24	
	<i>karoo thorn flower, acacia thorn tree, lavender</i>		
◊	Stretton's Double Cut Gin, 43%	22	
	<i>coriander, angelica, cassia</i>		
◊	The General's Gin, 43%	32	
	<i>buchu, vanilla, pine needles</i>		
SPAIN			
◊	Gin Eva, 45%	28	
	<i>cardamom, bitter orange peel, lemon peel</i>		
◊	Ginself Gin, 40%	30	
	<i>bitter orange peel, orange blossom, tiger nut</i>		
◊	Kinross Citric & Dry Gin, 40%	22	
	<i>lemon, grapefruit, mandarin</i>		
◊	Le Tribute Gin, 43%	26	
	<i>kumquat, lemongrass, grapefruit</i>		
◊	Voortrekker The Pioneer's Gin, 40%	24	
	<i>vanilla, ginger, liquorice</i>		
SWEDEN			
◊	Strane London Dry Merchant Strength Gin, 47.4%	36	
	<i>garden mint, sage, basil</i>		
◊	Wannborga Ö Gin, 40.1%	28	
	<i>white pepper, coriander, juniper</i>		
SWITZERLAND			
◊	Swiss Crystal Gin, 46%	32	
	<i>mandarin, cinnamon, peppermint</i>		
USA			
	Amass Dry Gin, 45%	24	
	<i>hibiscus, cacao, lime leaf</i>		
◊	Berkshire Mountain Ethereal Gin Batch 13 , 43%	26	
	<i>lime, lemon, orange</i>		
◊	Blade Gin, 47%	32	
	<i>ginger, coriander, black pepper</i>		
◊	Bogart's Gin, 45%	26	
	<i>macadamia, lavender, lime zest</i>		
◊	Botanica Spiritvs Gin, 45%	24	
	<i>meyer lemon, cucumber, bergamot</i>		
◊	Brandon's Rock Town Gin, 46%	24	
	<i>anise, orange peel, angelica</i>		
◊	Brooklyn Gin, 40%	26	
	<i>kumquat, lavender, cocoa nibs</i>		
◊	Connipion Gin, 44%	26	
	<i>cucumber, honeysuckle flower, fig</i>		
	Corsair Steampunk Gin, 45%	26	
	<i>smoked grain, hops, orange</i>		
◊	Counter Gin, 40%	22	
	<i>tarragon, verbena, meyer lemon</i>		
◊	DH Krahn Gin, 40%	28	
	<i>galangal, grapefruit, coriander</i>		

MODERN - CITRUS . FLORAL

◇ Ebb + Flow Gin, 47%	24
<i>elderflower, orange peel, angelica</i>	
◇ Harvard Avenue Gin, 45%	26
<i>rosehip, lemon peel, grains of paradise</i>	
◇ Joseph Magnus Vigilant District Dry Gin, 42%	22
<i>hand foraged juniper, sesame, tarragon</i>	
◇ Journeyman Bilberry Black Hearts Gin, 45%	24
<i>bilberry, anise, orris root</i>	
◇ Juniper Jones Gin, 48.5%	24
<i>dill, cucumber, cacao</i>	
◇ Leopold's American Gin, 40%	26
<i>pomelo, orris root, orange zest</i>	
◇ New Amsterdam Straight Gin, 40%	22
<i>vanilla, star anise, lime</i>	
Pinckney Bend Handcrafted American Gin, 47%	24
<i>lavender, liquorice, cardamom</i>	
◇ Seagram's Extra Dry Gin, 40%	24
<i>grapefruit zest, fresh lime, texas pecan</i>	
◇ Seersucker Southern Style Gin, 42%	26
<i>orange peel, mint, honey</i>	
◇ Small's Gin, 43%	24
<i>raspberry, orange, lemon</i>	
◇ Smooth Ambler Greenbrier Gin, 40%	26
<i>orange peel, coriander, black pepper</i>	
◇ Spirit Works Distillery Gin, 43%	26
<i>fresh orange, lemon zest, cardamom</i>	
◇ St. Augustine New World Gin, 47%	24
<i>lemon zest, hibiscus, orange zest</i>	
St. George ATLAS Orange Gin, 45%	22
<i>orange blossom, dill, cucumber</i>	
◇ Wire Works American Gin, 45%	24
<i>lime zest, lemon, star anise</i>	

FLORAL
BOUQUET, PERFUMED BLOOMS, PETALS

AUSTRALIA

◇ Bass & Flinders Monsoon Gin, 40%	34
<i>ginseng, ginger, lemongrass</i>	
◇ Distillery Botanica Gin, 42%	34
<i>chamomile, murraya, sage berggarten</i>	
Ink Gin, 43%	24
<i>pepperberry, lemon myrtle, sundried orange peel</i>	
Lawrenny Meadowbank Pink Gin, 38.5%	22
<i>blood orange, lemon thyme, hibiscus</i>	
Poor Toms Sydney Dry Gin, 41.3%	22
<i>green apple, strawberry gum leaf, chamomile</i>	
Prohibition 100 Year Gin, 42%	32
<i>honey, chardonnay grapes, saffron</i>	
◇ Seppeltsfield Distillers Barossa Dry, 41.6%	34
<i>pink pepper, coriander, lavender</i>	

BELGIUM

Blind Tiger Handcrafted Gin Imperial Secrets, 45%	30
<i>black tea, grains of paradise, lemongrass</i>	

◇ Duin Gin, 43%	32
<i>sea buckthorn berry, lavender, angelica</i>	
Forest Dry Spring Gin, 42%	24
<i>juniper, rose petal, lemon peel</i>	
◇ Gin De Binche Gin, 40%	34
<i>blood orange, hyssop, clove</i>	
◇ Musa Lova Gin, 41%	22
<i>banana, rosemary, lavender</i>	

CANADA

◇ Ampersand Distilling Co. Gin, 43.8%	26
<i>angelica, coriander, orris root</i>	
◇ Doctor's Orders Gin, 40%	26
<i>lavender, elderberry, apple</i>	
KM 12 Gin, 40%	24
<i>lavender, cucumber, orris</i>	
◇ Noteworthy New Western Dry Gin, 43%	24
<i>jasmine, lavender, orris root</i>	
◇ Spirit Bear Gin, 43.1%	24
<i>chamomile, lemon peel, lavender</i>	
◇ Terminal City Gin, 42%	24
<i>elderflower, chamomile, rosehip</i>	
◇ Unruly Gin, 43%	26
<i>sarsaparilla, green cedar tips, lavender</i>	
◇ Wallflower Gin, 44%	24
<i>rose petal, lavender, elderflower</i>	

DENMARK

Kobenhavn Klassik Gin, 46%	22
<i>elderberry, cinnamon, ginger</i>	

ENGLAND

◇ Ableforth's Bathtub Gin, 43.3%	28
<i>cinnamon, clove, cardamom</i>	
◇ Adnam's Rising Sun Gin, 42%	24
<i>matcha, lemongrass, ginger</i>	
Bloom Jasmine & Rose Gin, 40%	24
<i>elderflower, rose petal, honeysuckle</i>	
Brockmans Premium Gin, 40%	24
<i>valencia orange peel, blackberry, coriander</i>	
◇ Buckingham Palace Dry Gin, 42%	30
<i>lemon verbena, hawthorn berry, mulberry leaf</i>	
Burleighs Pink London Dry Gin, 40%	22
<i>sakura, pink grapefruit, hibiscus</i>	
◇ Edgerton Original Pink Gin, 43%	24
<i>pomegranate, sweet orange peel, damiana</i>	
◇ Hadrian's Wall Gin, 40%	24
<i>chamomile, mint, pimento</i>	
Jinzu Gin, 41.3%	24
<i>yuzu, cherry blossom, junmai sake</i>	
◇ Maiden Arwen's Flower Gin, 42%	24
<i>rosehip, hibiscus, orange peel</i>	
◇ ORIGIN Arezzo - Italy Gin, 46%	24
<i>juniper</i>	
◇ Sacred Juniper Gin, 40%	26
<i>juniper</i>	

◊ Sheep's Eye Gin, 42%	24	Feel! Munich Dry Gin, 47%	26
<i>hibiscus, liquorice, black pepper</i>		<i>chokeberry, blueberry, lavender</i>	
◊ Shooters Gin, 42%	28	Ferdinand Saar Dry Gin, 44%	26
<i>bilberry leaf, hibiscus, lemongrass</i>		<i>thyme, rosehip, hop blossom</i>	
Silent Pool Gin, 43%	24	◊ Hoos Lapsang Gin, 44.4%	30
<i>elderflower, cubeb, fresh bitter orange</i>		<i>lapsang, pine, cardamom</i>	
◊ Staffordshire Black Violet Gin, 40%	24	◊ Madame Geneva Rouge Gin, 41.9%	22
<i>black cardamom, violet, cubeb</i>		<i>primitivo grapes, lavender, juniper</i>	
◊ Stonewall Pink Rhubarb Gin, 40%	26	IRELAND	
<i>rhubarb, sea buckthorn, blueberry</i>		◊ Boatyard Double Gin, 46%	28
◊ Stovell's Wildcrafted Gin, 42%	26	<i>liquorice, lemon peel, bog myrtle</i>	
<i>bilberry, sweet flag, lovage</i>		◊ Glendalough Wild Spring Botanical Gin, 41%	26
◊ That Boutique-y D.C. Gin, 40%	32	<i>birch sap, sweet cicely, dandelion</i>	
<i>hops, tarragon, rosemary</i>		◊ Von Hallers Gin, 44%	34
The London No.1 Original Blue Gin, 47%	24	<i>ginger, fuchsia, lemon verbena</i>	
<i>gardenia, bergamot, savory</i>		ITALY	
◊ Tiger Premium Gin, 40%	26	◊ Argalà Al Genepy Gin, 45%	26
<i>liquorice, cinnamon, sweet lemon peel</i>		<i>genepy flower, acacia flower, apricot kernel</i>	
◊ Toujours 21 Gin, 42%	30	◊ Bordiga Rosa Gin, 42%	28
<i>lavender, angelica, lemon</i>		<i>rosebud, orange peel, angelica</i>	
◊ Ver Viola Gin, 40%	30	Del Professore Monsieur Gin, 43.7%	22
<i>butterfly pea flower, rose, juniper</i>		<i>zedoary, lavender, rose</i>	
◊ Victory Cold Gin, 43.3%	24	◊ Gin Agricolo Gadan, 47%	26
<i>black pepper, orris root, liquorice</i>		<i>iris, violet, rose</i>	
◊ Wicked Wolf Exmoor Gin, 42%	24	◊ Insulae Gin, 42%	32
<i>orange peel, lemongrass, hibiscus</i>		<i>carob, sesame d'ispica, pistachio</i>	
◊ Zephyr Blu Gin, 40%	22	◊ Machaby Gin, 43%	26
<i>elderberry, elderflower, gardenia flower</i>		<i>marjoram, rose, elderberry</i>	
ESTONIA		JAPAN	
◊ Crafter's Aromatic Flower Gin, 44.3%	28	Benizakura 9148 Recipe 0101 Gin, 45%	26
<i>meadowsweet, rosehip, yuzu</i>		<i>hidaka kelp, blueberry, dried daikon</i>	
◊ Metsis Blue Edition Gin, 44%	26	Etsu Gin, 43%	22
<i>cyclamen, rose, fresh lemon</i>		<i>yuzu, cherry blossom, sancho pepper</i>	
FRANCE		◊ Tatsumi Flowers, 47.5%	42
Citadelle Wild Blossom, 42.6%	24	<i>lavender, chamomile, elderberry</i>	
<i>cherry blossom petal, lemon peel, violet</i>		LATVIA	
G'Vine Floraison Gin, 40%	20	◊ Cross Keys Gin, 41%	28
<i>fresh lime, cardamom, nutmeg</i>		<i>chamomile, linden blossom, rosemary</i>	
◊ Gabriel Boudier Saffron Gin, 40%	22	NEW ZEALAND	
<i>saffron, orange peel, coriander</i>		◊ Blue Blood Gin, 43%	22
Generous Gin, 44%	22	<i>butterfly pea flower, manuka flower, feijoa</i>	
<i>red pepper, jasmine, elderflower</i>		NORWAY	
◊ Gin Gold 999.9 Gin, 40%	32	◊ Kimerud Gin, 47%	22
<i>poppy, gentian, violet flower</i>		<i>rhodiola rosea, mint, walnut</i>	
◊ Oli'Gin L'olive Gin, 41%	28	Oslo Gin, 45.8%	24
<i>olives, rosemary, violet</i>		<i>elderflower, coriander, birch leaves</i>	
◊ Saint Maudez Gin, 44.7%	26	PHILIPPINES	
<i>seaweed, angelica root, orange peel</i>		◊ Sirena Gin, 43%	22
GERMANY		<i>sampaguita, pink pomelo, rambutan</i>	
◊ 5 Continents Hamburg Dry Gin, 47%	26		
<i>eucalyptus, mate, cactus flower</i>			

MODERN - FLORAL

PORTUGAL

- ◇ 6M Friday Chic Gin, 40% 28
vine leaf, rose petal, orange blossom
- ◇ Amicis Gin, 40% 22
carqueja flower, santa maria herb, honey

SCOTLAND

- ◇ Arbikie Kirsty's Gin, 43% 26
blueberry, kelp, thistle
- ◇ Drovers Gin, 45% 28
heather, thistle, orange peel
- ◇ Glaswegin, 41.1% 26
milk thistle, pink pepper, orange flower
- Hendrick's Gin, 41.4% 24
cucumber, rose, cubeb
- Hendrick's Midsummer Solstice, 43.4% 28
lavender, orange blossom, rose
- ◇ House of Elrick Gin, 42% 26
rose petal, heather, pink pepper
- ◇ Lilliard Gin, 40% 24
cubeb, liquorice, rose petal
- ◇ Orkney Gin Company Johnsmas Gin, 41.3% 28
rose petal, heather, mint
- ◇ Strathearn Heather Rose Gin, 40% 24
heather, rose petal, liquorice
- ◇ Theodore Pictish Gin, 43% 26
damask rose, oolong tea, pomelo
- ◇ Vesperis Pictish Gin, 40% 26
heather honey, heather blossom, lemon peel

SOUTH AFRICA

- ◇ Geometric Gin, 43% 36
fynbos, buchu, cardamom
- Inverroche Amber Gin, 43% 24
mountainous fynbos, juniper, citrus
- Inverroche Classic Gin, 43% 24
limestone fynbos, lemon zest, orange zest
- Inverroche Verdant Gin, 43% 24
coastal fynbos, lemon zest, orange zest
- Musgrave Pink Gin, 43% 24
african ginger, grains of paradise, cardamom
- ◇ Westcliff Gin, 43% 24
ginger, buchu, coriander
- ◇ Wildcraft Gin Equinox 79, 43% 38
eureka lemon rind, lavender, nasturtium
- ◇ Wilderer Distillery Fynbos Gin, 45% 36
buchu, honeybush, wild dagga
- ◇ Wilderer Rose Water Gin, 43% 28
rose water, cinnamon, cardamom
- ◇ Woodstock Gin 021 on Victoria, 43% 26
rose geranium, rooibos, rosemary
- ◇ Woodstock Gin 142 on Gympie, 43% 26
hemp, honeybush, buchu
- ◇ Woodstock High Tea Gin, 43% 24
rooibos, honeybush, juniper

SPAIN

- ◇ Gin Loe, 40% 24
aloe vera, jasmine, orange blossom
- Nordés Atlantic Galician Gin, 40% 22
bay laurel, eucalyptus, hibiscus
- ◇ Tann's Gin, 40% 22
rose petal, mandarin peel, raspberry

SWEDEN

- ◇ Spirit of Hven Organic Gin, 40% 28
calamus root, mauritian bourbon vanilla, cassia

SWITZERLAND

- ◇ 82 Dry Gin, 45% 40
pink pepper, hibiscus, chamomile
- ◇ Xellent Edelweiss Gin, 40% 28
woodruff, edelweiss, lemon balm

TAIWAN

- ◇ Ginspiration Bar No. 1 Gin, 47% 28
jasmine flower, oolong tea, juniper

USA

- Aviation Gin, 42% 24
lavender, sarsaparilla, coriander
- ◇ Boardroom Gin, 40% 24
lemon, juniper, star anise
- ◇ CapRock Gin, 41% 24
apple, lavender, juniper
- ◇ Doc Porter's Gin, 44% 26
chamomile, cucumber, lemon peel
- Dorothy Parker Gin, 44% 22
hibiscus, elderberry, cinnamon
- ◇ Far North Sölveig Gin, 43.5% 26
red grapefruit, organic thyme, lavender
- Greenhook Ginsmiths Gin, 47% 24
cinnamon, chamomile, elderflower
- Koval Dry Gin, 47% 24
lavender, rosehip, grains of paradise
- ◇ McElroy's Corruption Gin, 45% 26
allspice, lemongrass, kaffir lime
- ◇ Neversink Spirits Gin, 43% 22
elderflower, star anise, cinnamon
- ◇ Swallowtail Premium Gin, 45% 24
lime zest, lavender, cardamom
- ◇ That Boutique-y Monkey Tea Party Gin, 46% 28
lavender, cardamom, orange peel
- ◇ Townshend's Gin, 40% 24
lavender, green tea, chamomile
- Uncle Val's Botanical Gin, 45% 26
green tea, lavender, chamomile

HERBAL
FRESH BUNCH, DRIED LEAVES, VEGETAL

ARGENTINA		
◇ Principe De Los Apostoles Mate Gin, 40%	28	
<i>yerba mate, eucalyptus, spearmint</i>		
AUSTRALIA		
◇ 313 Dry Wattleseed Gin, 42%	24	
<i>wattleseed, lemon zest, cardamom</i>		
78 Degrees Sunset Gin, 42%	22	
<i>bush apple, strawberry gum, rosella flower</i>		
◇ Archie Rose Horisumi Winter Gin, 44%	28	
<i>tasmanian kombu, sencha, genmaicha</i>		
◇ Archie Rose Summer Gin Project Bush Gin, 40%	32	
<i>pink pepper, waxflower, thyme</i>		
Four Pillars Changing Season Gin, 43.8%	24	
<i>quandong, gyokuro, kinmokusei</i>		
Four Pillars Olive Leaf Gin, 43.8%	24	
<i>olive leaf, lemon myrtle, macadamia</i>		
◇ Hidden World Palo Santo Gin, 44%	38	
<i>palo santo wood, juniper</i>		
◇ Hobart No.4 Batch Distilled Gin, 44%	38	
<i>lemon myrtle, anise myrtle, wattleseed</i>		
◇ Hurdle Creek Still Aniseed Gin, 42%	36	
<i>aniseed, anise myrtle, cinnamon myrtle</i>		
Lawrenny Higlands Gin, 40%	24	
<i>blue cypress needle, buchu, grains of paradise</i>		
◇ Noosa Heads Sum Yung GuysXFortune Pho Gin, 46%	38	
<i>nam pla, spring onion, porcini mushroom</i>		
◇ Seppeltsfield Distillers House Gin, 41.5%	34	
<i>chamomile, lavender, cornflower</i>		
AUSTRIA		
◇ Prinz Wacholderschnapps, 40%	22	
<i>juniper</i>		
BELGIUM		
◇ Butcher's Gin, 43%	22	
<i>orange zest, black pepper, angelica</i>		
Copperhead The Gibson Edition Gin, 40%	26	
<i>dill seed, fennel seed, black pepper</i>		
◇ Poppies Gin, 40%	28	
<i>juniper, liquorice, aniseed</i>		
◇ Spring Méditerranée Gin, 40.5%	40	
<i>bay leaf, lemon peel, thyme</i>		
BRAZIL		
◇ McQueen & The Violet Fog Gin, 40%	26	
<i>rosemary, calamansi, açai</i>		
CANADA		
◇ Black Moon Gin with Smoked Rosemary, 40%	34	
<i>smoked rosemary, sage, lemon peel</i>		
◇ Endeavour Origins Gin, 45%	26	
<i>liquorice, red grapefruit, black pepper</i>		
◇ Endeavour Small Batch Gin, 45%	26	
<i>grain of paradise, red grapefruit, black pepper</i>		
◇ Kootenay Country Gin, 40%	26	
<i>orange peel, pine nut, rosemary</i>		
◇ Long Table London Dry Gin, 44%	24	
<i>fennel seed, rosemary, lemon peel</i>		
◇ Okanagan Spirits Family Reserve Gin, 40%	24	
<i>spruce tips, rose, tarragon</i>		
◇ Okanagan Spirits Gin, 40%	24	
<i>spruce tips, rose, orris root</i>		
◇ Old Blood Gin, 40%	28	
<i>mesopotamian coriander, liquorice, saskatoon berry</i>		
◇ Paul's Tomb Gin, 40%	24	
<i>pine, spruce tips, lemon peel</i>		
◇ Queensborough Dry Gin, 43%	24	
<i>spruce tips, rosemary, jasmine</i>		
◇ Sheringham Vancouver Island Seaside Gin, 43%	24	
<i>winged kelp, rose, lemon</i>		
St. Laurent Gin, 43%	26	
<i>cubeb, grains of paradise, laminar seaweed</i>		
◇ Stump Coastal Forest Gin, 42%	24	
<i>cascade hops, bay laurel, grand fir</i>		
◇ Ungava Gin, 43.1%	24	
<i>artic blend, wild rosehip, cloudberry</i>		
CZECH REPUBLIC		
◇ Koniferum Borovicka Gin, 37.5%	22	
<i>koniferum pine, cranberry, juniper</i>		
ENGLAND		
Apoteca Gin, 43%	28	
<i>bee bread, propolis, blackcurrant leaf</i>		
Cambridge Anty Gin, 42%	88	
<i>62 red wood ants, wood avens, nettle</i>		
◇ Dancing Cows Lymington Gin, 43%	26	
<i>hops, cardamom, angelica</i>		
◇ Gin Lane 1751 Victoria Pink Gin, 40%	26	
<i>star anise, coriander, angelica</i>		
Half Hitch Gin, 40%	24	
<i>malawian black tea, bergamot, black pepper</i>		
◇ Land Of Saints Organic Gin, 40%	28	
<i>violet leaf, hyssop, rose buds</i>		
◇ Mayfield Gin, 40%	22	
<i>hops, coriander, orris root</i>		
◇ One Gin, 43%	26	
<i>sage, lemon peel, nutmeg</i>		
◇ ORIGIN Caprese Michelangelo - Italy Gin, 46%	24	
<i>juniper</i>		
◇ ORIGIN Istog - Kosovo Gin, 46%	24	
<i>juniper</i>		
◇ ORIGIN Meppel - Netherlands Gin, 46%	24	
<i>juniper</i>		
◇ Slingsby Gin, 42%	26	
<i>primrose, sweet cicely, milk thistle</i>		

MODERN - HERBAL

◇ Stafford's Gin, 42%	26	Drumshanbo Irish Gunpowder Gin, 43%	26
<i>rosemary, macadamia nut, lemon balm</i>		<i>gunpowder tea, star anise, meadowsweet</i>	
◇ T.E.A Earl Grey Gin, 42%	24	Ornabrak Single Malt Gin, 43%	26
<i>earl grey, bergamot oil, bay leaf</i>		<i>douglas fir, lemon verbena, angelica</i>	
◇ T.E.A. Jasmine Gin, 42%	28	ITALY	
<i>rose petal, bay leaf, jasmine</i>		◇ Clandestino Dry Gin, 40%	26
◇ True North Sheffield Dry Gin, 42%	24	<i>cardamom, angelica, calamus</i>	
<i>gentian, bilberry, henderson's relish</i>		Del Professore Madame Gin, 42.9%	22
◇ Two Birds Speciality Cocktail Gin, 40%	24	<i>tansy, zedoary, cassia</i>	
<i>juniper, orris root, coriander</i>		◇ Gin Agricolo Blagheur, 47%	26
◇ Unit Six Ultra Premium Gin, 42%	28	<i>cumin, southernwood, wormwood</i>	
<i>bergamot, pink pepper, freesia flower</i>		Giniu Gin, 40%	32
◇ Zymurgorium The Original Manchester Gin, 40%	32	<i>mastic, sage, myrtle</i>	
<i>coriander, caraway, galangal</i>		◇ Grifu Gin, 43%	24
FINLAND		<i>mint, mastic, sage</i>	
◇ Ägräs Gin, 43.7%	34	Piùcinque Gin, 47%	24
<i>red clover, wild angelica, rosemary</i>		<i>zedoary, bergamot, wormwood</i>	
Kyrö Napue Gin, 46.3%	24	◇ Rivo Gin, 43%	36
<i>cranberry, sea buckthorn, birch leaf</i>		<i>thyme, lemon balm, cardamom</i>	
FRANCE		◇ Simple Gin, 40%	22
Fair Juniper Gin, 42%	22	<i>scotch pine shoots, elderflower, sage</i>	
<i>cardamom, calamus root, angelica</i>		JAPAN	
◇ Fieldfare Dry Gin, 47%	34	◇ Kanomori Craft gin, 47%	28
<i>fennel seed, angelica, masterwort</i>		<i>hibiscus, kuromoji, star anise</i>	
◇ Gin D'Azur, 43%	26	Ki No Bi Kyoto Dry Gin, 45.7%	24
<i>menton lemon peel, marjoram, rosemary</i>		<i>yuzu, bamboo leaf, green shansho</i>	
Sorgin, 43%	24	Ki No Tea Gin, 46.7%	26
<i>sauvignon blanc distillate, violet, broom flower</i>		<i>tencha tea, gyokuro green tea, ginger</i>	
GERMANY		Nikka Coffey Gin, 47%	22
Bitter Truth Pink Gin, 40%	22	<i>amanatsu, apple, kabosu</i>	
<i>aniseed, mace, fennel seed</i>		ROKU Gin, 43%	22
◇ Grassl Bergbrenner Gin, 43%	28	<i>cherry blossom, cherry leaf, shanso pepper</i>	
<i>juniper, coriander, gentian</i>		Sakurao Hamagou Gin, 47%	30
◇ Lebensstern Pink Gin, 43%	24	<i>rosemary, hamagou, shiranui</i>	
<i>angostura bitters, black pepper, orange zest</i>		◇ Tatsumi Hop Gin, 47.5%	42
◇ Voluptas Gin, 43%	28	<i>hops, roses, mandarin</i>	
<i>ginseng, maca, cumin</i>		LUXEMBOURG	
GUATEMALA		◇ Supa Saya Gin, 39.5%	28
Xibal Artesanal Guatemalan Gin, 45%	22	<i>juniper, malt grain</i>	
<i>pericon, orange, black pepper</i>		NETHERLANDS	
ICELAND		◇ Palte Premium Gin, 43%	32
◇ Icelandic Eagle Gin, 43%	26	<i>green tea, gale, juniper</i>	
<i>ginger, angelica, coriander</i>		◇ Perfume Trees Gin, 45%	28
INDIA		<i>sandalwood, green tea, white champaca flower</i>	
Hapusa Dry Gin, 43%	22	◇ VL 92 Gin, 41.7%	28
<i>gondhoraj, mango, almond</i>		<i>coriander, cinnamon, caraway</i>	
IRELAND		NEW ZEALAND	
◇ Bonac 24 Gin, 42%	36	◇ Black Robin Rare Gin, 43%	38
<i>lemon peel, cucumber, spearmint</i>		<i>star anise, lime zest, lemongrass</i>	
Dingle Gin, 42.5%	22	Curiosity Dry Gin, 40%	22
<i>hawthron, bog myrtle, rowan berry</i>		<i>kawakawa, horopito, manuka</i>	

◇ Victor Gin, 42%	24	Gin Mare, 42.7%	22
<i>lemongrass, cardamom, coriander</i>		<i>olive, rosemary, thyme</i>	
NORWAY		◇ Ginebra K-25 Gin, 45%	26
Bareksten Gin, 46%	26	<i>mandarin, chamomile, mint</i>	
<i>elderflower, lingonberry, rhubarb</i>		◇ Harbour 40 Degrees 48 N Gin, 40%	24
PERU		<i>sea fennel, sea rocket, glasswort</i>	
Amazonian Gin Company Gin, 41%	24	Larios Ginebra Mediterranea Gin, 37.5%	24
<i>camu camu, tonka bean, sasha inchi</i>		<i>coriander, juniper, orange peel</i>	
PORTUGAL		Mascaro 9 Gin, 40%	22
◇ Tinto Red Premium Gin, 40%	24	<i>juniper</i>	
<i>eucalyptus leaf, catnip, blackberries</i>		Puerto de Indias Pure Black Edition Gin, 40%	24
SCOTLAND		<i>jasmine, vanilla, orange blossom</i>	
◇ Gordon Castle Gin, 43%	26	◇ Ruchey Nispero London Dry Gin, 40%	22
<i>mint, lavender, gooseberry</i>		<i>medlar, coriander, cardamom</i>	
Isle of Harris Gin, 43%	24	Santamania Lola y Vera Gin, 40%	24
<i>sugar kelp, liquorice, cassia</i>		<i>apple, ginger, sunflower</i>	
◇ Verdant Dry Gin, 43%	26	Santamania London Dry Gin, 41%	24
<i>angelica, green cardamom, bitter orange peel</i>		<i>liquorice, raspberry, wild rosemary</i>	
◇ Wild Island Botanic Gin, 43.7%	26	◇ Suau Gin, 43%	24
<i>bog myrtle, heather flowers, meadowsweet</i>		<i>sóller orange peel, rosemary, fig leaf</i>	
SINGAPORE		◇ Valxerit Gin, 40%	22
Kyuri Gin, 43%	26	<i>rosemary, ginger, cherry</i>	
<i>japanese cucumber, sakura cherry blossom, juniper</i>		◇ Volcanic Gin, 42%	26
SOUTH AFRICA		<i>cumin, chamomile, st. john's wort</i>	
◇ Ginifer Handcrafted Gin, 43%	26	Xoriguer Mahon Gin, 38%	26
<i>native african medicinal herbs, juniper, citrus</i>		<i>sage, juniper needle, pine</i>	
Hobbs Cape Dry Gin, 43%	20	SWEDEN	
<i>lime leaf, lemongrass, coriander</i>		Bergslagen Organic Gin, 45.7%	22
Hobbs Pink Peppercorn Gin, 43%	20	<i>lingonberry, coriander, lemon peel</i>	
<i>pink peppercorn, cardomom, coriander</i>		SWITZERLAND	
KWV Cruxland Gin, 43%	26	◇ Breil Pur Gin, 45%	34
<i>kalahari truffle, honeybush, aniseed</i>		<i>rhododendron, alpine rose, chocolate mint</i>	
◇ New Harbour Distillery Rooibos Infused Gin, 43%	24	◇ Modernist Alpine Dry Gin, 44%	32
<i>rooibos, sweet orange peel, cassia</i>		<i>mountain sage, mountain thyme, elderflower</i>	
◇ New Harbour Distillery Spekboom Gin, 43%	24	◇ ngenious! Swiss Blended, 45%	38
<i>spekboom tree leaf, liquorice, almonds</i>		<i>laurel fruit, hay flower, black currant leave</i>	
◇ Woodstock Gin 399 on Albert, 43%	26	◇ Rheinbrand Dry Gin, 40%	38
<i>rose geranium, rosemary, buchu</i>		<i>elderflower, riesling, lemongrass</i>	
◇ Woodstock Gin Inception Beer Base Gin, 43%	24	◇ Rheinbrand Hemp Edition Gin, 40%	38
<i>honeybush, buchu, juniper</i>		<i>elderflower, riesling, cbd hemp</i>	
SPAIN		USA	
◇ 19 Flors Gin, 40%	24	◇ ATELIER Vie Euphosine #9 Gin, 45%	28
<i>black tea, chamomile, cilantro</i>		<i>bay leaf, coffee, hyssop</i>	
Alkkemist Gin, 40%	26	◇ Breuckelen Glorious Gin, 45%	26
<i>muscat grape, rose petal, sage</i>		<i>ginger, rosemary, grapefruit peel</i>	
◇ BCN Gin, 40%	28	◇ Catoctin Creek Watershed Gin, 46%	24
<i>southern wormwood, rosemary, fig</i>		<i>cinnamon, anise, coriander</i>	
◇ Fever Island Premium Gin, 40%	24	Corsair Gin, 44%	24
<i>lemongrass, fennel seed, rosemary</i>		<i>angelica, orris root, orange peel</i>	
◇ Germà Dry-Gin, 44%	22	◇ Farallon Gin, 43%	22
<i>cardamom, coriander, juniper</i>		<i>cucumber, fennel seed, lemongrass</i>	

MODERN - HERBAL . SPICED

Farmer's Organic Gin, 46.7%	24	Four Pillars Bloody Shiraz Gin, 37.8%	22
<i>lemongrass, elderflower, cucumber</i>		<i>shiraz grape, cinnamon, pepperberry</i>	
FEW Breakfast Gin, 42%	28	Four Pillars Spiced Negroni Gin, 43.8%	22
<i>earl grey tea, bergamot, coriander</i>		<i>pepperberry leaf, cinnamon, ginger</i>	
◇ Golden Moon Gin, 45%	28	◇ Gunner Australian Spiced Gin, 40%	36
<i>mint, lavender, juniper</i>		<i>bush tomato, demerara, vanilla bush honey</i>	
◇ Half Moon Orchard Gin, 46%	24	◇ Knocklofty Penn Gin, 40%	34
<i>fresh bergamot, apple, nutmeg</i>		<i>lemongrass, pepperberry, basil</i>	
◇ Hedge Trimmer Gin, 42%	22	◇ McHenry Federation Gin, 42.2%	28
<i>sarsaparilla, watermelon rind, coriander</i>		<i>quandong, mountain pepper leaf, celery top pine</i>	
◇ Junipero Gin San Francisco Strength, 49.3%	24	Melbourne Moonshine Memo Gin, 41.8%	22
<i>coriander, liquorice, cubeb</i>		<i>casacara, navel orange, cardamom</i>	
New Deal No.1 Gin, 45%	22	AUSTRIA	
<i>juniper</i>		◇ Reisetbauer Blue Gin, 43%	26
◇ Ransom Dry Gin, 43%	24	<i>cinnamon, hops, almond</i>	
<i>marionberry, hops, anise</i>		BELGIUM	
St. George Botanivore Gin, 45%	22	◇ Beernaert Original Pure Gin, 40%	26
<i>coriander, dill, grapefruit peel</i>		<i>juniper, cardamom, coriander</i>	
St. George Terroir Gin, 45%	22	◇ Belgin Speciale Gin, 41.4%	26
<i>douglas fir, roasted coriander, laurel</i>		<i>lemon peel, hops, clove</i>	
◇ The Walter Collective Gin, 45%	26	Blind Tiger Handcrafted Gin Piper Cubeba, 47%	32
<i>cassia, cardamom, grapefruit peel</i>		<i>cubeb, orange blossom, malted barley</i>	
TRU Organic Gin, 42%	24	◇ Buss No.509 Rebel Cut Gin, 47%	28
<i>vanilla bean, clove, chamomile</i>		<i>lavender, white pepper, cinnamon</i>	
◇ Uncle Val's Peppered Gin, 45%	24	◇ Holy Water Mustard Gin, 40%	38
<i>sage, lavender, cucumber</i>		<i>mustard, black pepper, cardamom</i>	
◇ Valor West Coast Gin, 43.1%	22	◇ Spring Gentleman's Cut Gin, 48.8%	50
<i>cinnamon, pink pepper, anise</i>		<i>rhubarb root, pine buds, black pepper</i>	
◇ Vapor Distillery Rhok Gin, 47%	28	◇ Spring Original Gin, 43.8%	32
<i>lavender, sencha tea, chamomile blossom</i>		<i>rhubarb root, pine buds, black pepper</i>	
◇ Volstead's Folly American Gin, 40.5%	24	CANADA	
<i>sichuan pepper, sage, rosemary</i>		◇ Dixon's Wicked Gin, 40%	22
◇ Voyager Dry Gin, 42%	22	<i>liquorice, elderberry, grains of paradise</i>	
<i>oak chip, elderberry, sage</i>		◇ Old Order Legacy Gin, 40%	24
WALES		<i>apples, sumac, sage</i>	
◇ Da Mhile Seaweed Organic Gin, 42%	24	◇ Tempo Renovo Dry Gin, 40%	24
<i>seaweed, eucalyptus, mint</i>		<i>liquorice, angelica, coriander</i>	

SPICED

PEPPERS, BAKING SPICES, FRAGRANT

AUSTRALIA

78 Degrees Classic Gin, 42%	22	Peddlers Shanghai Craft Gin, 45.7%	22
<i>cinnamon, nutmeg, star anise</i>		<i>cubeb, sichuan pepper, lotus flower</i>	
78 Degrees Desert Gin, 48%	24	CZECH REPUBLIC	
<i>blood lime, clove, black pepper</i>		◇ Žufánek Le Gin Occulte Gin, 45%	32
◇ Archie Rose Horisumi Autumn Gin, 44%	28	<i>pink pepper, vanilla, juniper</i>	
<i>red miso, sesame seed, sansho pepper</i>		ENGLAND	
◇ Brookies Byron Dry Gin, 46%	32	Apoteca Horseradish Gin, 46%	28
<i>blood lime, aniseed myrtle, ginger</i>		<i>horseradish, fireweed, propolis</i>	
Canberra Distillery Dry Gin, 47%	24	Cadenhead's Old Raj Red Gin, 46%	24
<i>cassia, mountain pepperleaf, liquorice</i>		<i>saffron, almond powder, cinnamon</i>	
		Chase GB GIN, 40%	22
		<i>cinnamon, cardamom, ginger</i>	
		◇ Indian Summer Saffron Infused Gin, 46%	24
		<i>saffron, angelica, coriander</i>	

◊ Masons Dry Yorkshire Tea Edition Gin, 42% <i>black tea, sichuan pepper, bay leaf</i>	24	Rocca di Montenassi Imperiale Gin, 43% <i>elderberry, tumeric, bergamot</i>	26
◊ Peaky Blinder Spiced Dry Gin, 40% <i>ginger, grains of paradise, black pepper</i>	24	JAPAN	
◊ Sacred Coriander Gin, 40% <i>coriander, angelica, orris root</i>	26	◊ Ki No Bi Ginza Mori Gin, 45.7% <i>cypress, kinome, sansho pepper</i>	26
◊ Scilly Spirit Island Gin , 44% <i>javan pepper, cardamom, cassia</i>	28	NETHERLANDS	
◊ Wardington's Ludlow Spiced Gin, 42% <i>ginger, nutmeg, grains of paradise</i>	26	Gin & Jonnie GastroGin, 45% <i>sichuan pepper, fennel seed, verbena</i>	22
◊ Zymurgorium Mandarin Dynasty Gin, 40% <i>mandarin, sichuan pepper, clove</i>	34	◊ Schermer Dry Gin, 43% <i>allspice, rhubarb, lavender</i>	24
◊ Metsis Gin, 44% <i>cinnamon, ginger, apricot</i>	24	◊ Wagging Finger Exercise V2.0 Gin, 44% <i>juniper, coriander, cassia</i>	24
FINLAND		NEW ZEALAND	
Kalevala Distilled Gin, 46.3% <i>raspberry leaf, ginger, cardamom</i>	22	Dancing Sands Saffron Gin, 46% <i>saffron, peppercorn, angelica</i>	24
FRANCE		◊ Hidden World Hot Cross Bun Gin, 44% <i>cinnamon, nutmeg, sultana</i>	38
◊ Audemus Pink Pepper Gin, 44% <i>pink pepper, honey, cinnamon</i>	28	◊ Hidden World Oriental Spice Gin, 44% <i>sichuan pepper, clove, cinnamon</i>	32
G'Vine Nouaison Gin, 43.9% <i>sandalwood, vetiver, ginger</i>	24	SCOTLAND	
◊ Generous Coriander & Combava Gin, 44% <i>coriander, combava, red pepper</i>	32	◊ Hendrick's Lunar Gin , 43.4% <i>cucumber, rose, cubeb</i>	26
Le Gin 1 & 9 Gin, 40% <i>ginger, jamaican pepper, cinnamon</i>	24	◊ McQueen Smokey Chilli Gin, 42% <i>chipotle chili, smoked chili, lime</i>	26
◊ Thompson's Small Batch Gin, 43% <i>peach, caviar, jamaican pepper</i>	26	◊ Orkney Gin Company Mikkemas Gin, 41.3% <i>cinnamon, rosehip, orange peel</i>	28
GERMANY		SINGAPORE	
◊ Bavarka Bavarian Gin, 46% <i>hops, fennel seed, hay flower</i>	28	Tanglin Orchid Gin, 42% <i>vanilla, orchid, amchoor powder</i>	22
◊ Granit Bavarian Gin, 42% <i>melissa, bald-money, gentian root</i>	32	SOUTH AFRICA	
◊ Madame Geneva Blanc Gin, 44.4% <i>juniper, coriander, ginger</i>	22	Ginologist Spiced Gin, 43% <i>grains of paradise, ashanti pepper, cardamom</i>	22
◊ Monkey 47 Beef Pepper Gin, 47% <i>grains of paradise, okra, musk seed</i>	48	Hope On Hopkins Mediterranean Gin, 43% <i>olive, basil, thyme</i>	26
Monkey 47 Distiller's Cut 2019, 47% <i>mace, nutmeg, juniper</i>	48	◊ Pienaar & Son Orient Gin, 43% <i>allspice, ginger, cassia</i>	26
INDIA		◊ Woodstock Gin 001 on Searle, 43% <i>ginger, lavender, coriander</i>	26
Stranger & Sons Gin, 42.8% <i>black pepper, gondhoraj lime peel, coriander</i>	22	SPAIN	
IRELAND		Santamania x Four Pillars Gin, 40% <i>bush tomato, rosemary, olive leaf</i>	26
Maharani Gin, 41% <i>nutmeg, mace, pomelo</i>	22	SWEDEN	
◊ Ninth Wave Irish Gin , 43% <i>lemon verbena, cardamom, orange peel</i>	24	◊ Right Gin, 40% <i>sarawak black pepper, bergamot, bitter orange peel</i>	26
ITALY		SWITZERLAND	
◊ Roby Marton's Gin, 47% <i>horseradish, ginger, clove</i>	26	◊ Arctic Velvet Gin, 40% <i>nutmeg, cumin, coriander</i>	34
		◊ Basilisk Dry Gin, 44% <i>hibiscus blossom, pimento, clove</i>	38
		◊ Matte Dry Gin, 42% <i>violet root, ginger, cinnamon</i>	38

MODERN - SPICED . LUSCIOUS . NUTTY

- ◇ Turicum Dry Gin, 41.5% 34
linden flower, orange blossom, thyme

TAIWAN

- The Orientalist Gunpowder Gin, 40% 28
gunpowder tea, kampot pepper, omija

THAILAND

- ◇ Kristall Thai Spirit Gin, 40% 22
lemongrass, alston pepper, citrus
- ◇ Origin Gin, 40% 22
oolong tea, bael fruit, mah kwan pepper
- Paper Lantern Sichuan Pepper Gin, 40% 22
sichuan pepper, makhwaen, longan berry honey

USA

- ◇ Commerce Gin, 42.5% 22
cumin, cardamom, lime zest
- ◇ Fid Street Hawaiian Gin, 45% 28
pineapple, cedar leaf, fennel seed
- ◇ Imagination Gin, 40% 22
sichuan pepper, celery, lavender
- ◇ Letherbee Gin, 48% 26
cubeb, ginger, almond
- ◇ Madam Pattirini Gin, 44% 24
bergamot, ginger, cardamom
- ◇ Roxor Artisan Gin, 45% 28
grapefruit zest, texas pecan, sarsaparilla
- St. George Dry Rye Gin, 45% 22
black pepper, grapefruit peel, caraway

VIETNAM

- ◇ Sông Cái Gin, 45% 22
jungle pepper, pomelo, green turmeric

LUSCIOUS

DELICATE, VELVETY SWEETENED, SCRUMPTIOUS

BELGIUM

- ◇ Holy Water Cuberdon Gin, 40% 38
juniper, coriander, orange zest

ENGLAND

- Ableforth's Bathtub Old Tom Gin, 42.4% 30
liquorice, coriander, cardamom
- Hayman's 1820 Gin Liqueur, 40% 22
orange peel, lemon peel, nutmeg
- ◇ Hayman's English Cordial Gin, 42% 26
lemon peel, liquorice, angelica
- ◇ Hoxton Gin, 40% 30
coconut, tarragon, iris
- ◇ Keepr's Honey Gin, 40% 26
honey, cardamom, cassia
- ◇ The Distillery Celebrated Butter Gin, 44% 32
butter, bitter orange peel, nutmeg
- ◇ The Wrecking Coast Cornish Clotted Cream Gin, 44% 26
clotted cream, cinnamon, liquorice

- ◇ Zymurgorium Winter Raspberry Gin, 40% 28
winter raspberry, oats, juniper

FINLAND

- Kyrö Pink Gin, 38.2% 24
strawberry, lingonberry, elderflower

GERMANY

- Mundart Kaiserstuhl Dry Gin, 43% 30
aniseed, coriander, lemon peel
- ◇ Sears Cutting Edge Gin, 44% 22
juniper, bergamot, coriander

SCOTLAND

- Tanqueray Flor de Sevilla, 41.2% 22
seville orange, orange blossom, liquorice

SINGAPORE

- Chendol Gin, 40% 24
pandan, coconut, juniper
- Coconut Pandan Gin, 43% 20
coconut, pandan, orange

SOUTH AFRICA

- ◇ Cape Town Rooibos Red Gin, 43% 24
rooibos, cinnamon, orange peel

SPAIN

- ◇ Botanic Ultra Premium London Dry Gin, 45% 28
chamomile, almond, mango

THAILAND

- Iron Balls Gin, 40% 22
coconut, pineapple, ginger

USA

- FEW American Gin, 40% 24
tahitian vanilla, cassia, hops

NUTTY

RUSTIC, WOODY, SAVOURY EDGE

BELGIUM

- ◇ Xolato X-Gin, 46% 38
cocoa, hazelnut, chilli

CANADA

- Cirka Sauvage Gin, 44% 24
bergamot, lavender, red pine

SCOTLAND

- Rock Rose Autumn Gin, 41.5% 24
bilberry, coriander, nasturtium flower

SPAIN

- ◇ Port of Dragons 100% Pure Gin, 40% 32
hazelnut, hibiscus, nutmeg

SWITZERLAND

- ◇ Matters Nutmeg Gin, 44% 28
ginger, nutmeg, hyssop

EARTHY
DARK RICH SOIL, TURF, WET LEAVES

AUSTRALIA		
◊ Applewood Distillery Gin, 43%	36	
<i>pepperberry, wattleseed, macadamia</i>		
◊ Artemis Gin, 44%	28	
<i>eucalyptus, artemesia, finger lime</i>		
Giniversity Smoked Hemp Gin, 40%	24	
<i>hemp heart, white juniper</i>		
Manly Spirits Australian Dry Gin, 40%	28	
<i>sea lettuce, finger lime, pepperberry</i>		
BELGIUM		
◊ Belgin Fresh Hop Gin, 40%	26	
<i>hops, cardamom, vanilla</i>		
CANADA		
◊ Dixon's VirGin Gin, 40%	22	
<i>liquorice, cinnamon, vanilla</i>		
◊ Seraph Gin, 40%	24	
<i>coriander, chicory, rose</i>		
ENGLAND		
◊ Caspyn Midsummer Dry Gin, 40%	24	
<i>lemon verbena, cucumber, hibiscus</i>		
◊ Edgerton Blue Spice Gin, 43%	24	
<i>coriander, fennel seed, black pepper</i>		
◊ ORIGIN Klanac - Croatia Gin, 46%	24	
<i>juniper</i>		
◊ ORIGIN Skopje - Macedonia Gin, 46%	24	
<i>juniper</i>		
◊ Tappers Darkside Gin, 39.6%	38	
<i>sea beet, cardamom, chickweed</i>		
FINLAND		
◊ Isfjord Gin, 44%	28	
<i>lemongrass, sandal tree oil, cardamom</i>		
GERMANY		
Monkey 47 Distiller's Cut Edition of 2016 Gin, 47%	42	
<i>pomelo, lemon balm, fir honey</i>		
ITALY		
◊ Aduro Bell Pepper Gin, 40%	36	
<i>green capsicum, mugwort, ginger</i>		
◊ Bordiga Smoke Gin, 42%	28	
<i>smoked juniper, angelica, cardamom</i>		
JAPAN		
◊ Benizakura 9148 Recipe 0102 Gin, 45%	30	
<i>dried daikon, dried shi-take, hidaka kelp</i>		
◊ Benizakura 9148 Recipe 1922 Gin, 42%	28	
<i>smoked juniper, hidaka kelp, pink pepper</i>		
◊ Benizakura 9148 Recipe 3891 Gin, 45%	26	
<i>red maple, mountain wasabi, red purple soup</i>		
Sakurao Limited Edition Gin, 47%	34	
<i>sakura, kinome, ground oyster shell</i>		
MEXICO		
Pierde Almas + 9 Botanicals Gin, 45%	24	
<i>nutmeg, orange peel, star anise</i>		
NETHERLANDS		
◊ Vording's Gin, 44.7%	28	
<i>cedar wood, orange, cinnamon</i>		
NEW ZEALAND		
◊ Hidden World Guardian Wild Spice Gin, 44%	32	
<i>kawakawa leaf, horopito, lime</i>		
◊ Karven Ginseng Gin, 40%	28	
<i>ginseng, lemon, orange</i>		
◊ South Gin, 40.2%	24	
<i>kawakawa leaf, manuka berry, gentian</i>		
PORTUGAL		
◊ Sharish Gin, 40%	32	
<i>lemon verbena, cinnamon, apple</i>		
SCOTLAND		
Hendrick's Orbium Gin, 43.4%	28	
<i>quinine, wormwood, cucumber</i>		
◊ Kilmahew Gin, 42%	26	
<i>orange peel, bramble leaf, rosehip</i>		
SOUTH AFRICA		
Musgrave Gin, 42%	24	
<i>cardamom, african ginger, grains of paradise</i>		
SWITZERLAND		
◊ ngenious! Smoked & Salted Gin, 42%	36	
<i>smoked stone salt, quince, ginger</i>		
◊ Ojo De Agua Dry Gin, 43%	32	
<i>mate, brandy, blackberry spirit</i>		
THAILAND		
◊ Grandma's Jinn Gin, 40%	22	
<i>safflower, ginger, angelica</i>		
USA		
◊ Automatic Sea Gin, 45%	32	
<i>nori, sage, lemongrass</i>		
◊ Battle Standard Standard Strength Gin, 45%	24	
<i>cardamom, coriander, cinnamon</i>		
◊ Bumpers & Lazarus Dry Gin, 47%	26	
<i>liquorice, angelica, cinnamon</i>		
◊ Cold River Traditional Gin, 47%	26	
<i>angelica, cardamom, coriander</i>		
◊ Crater Lake Gin, 47.5%	28	
<i>juniper</i>		
◊ Lee Spirits Dry Gin, 45%	20	
<i>angelica, cardamom, lemon peel</i>		
◊ Letherbee Autumnal Gin, 48%	26	
<i>cranberry, rosemary, lemon peel</i>		

MODERN - GRASSY . BERRIES . FRUITY

GRASSY
GREENNESS, TALL GRASS, MEADOW

- BELGIUM**
- ◇ Meyer's M2 Gin, 43% 36
white asparagus, orris root, sage
- CANADA**
- ◇ The Empiric Gin, 40% 24
hops, lavender, lemon verbena
- ENGLAND**
- Hepple Gin, 45% 26
douglas fir, bog myrtle, green juniper
 - ◇ Martin Miller's Summerful Gin, 40% 24
rosemary, arctic thyme, florentine iris
- FINLAND**
- Kyrö Helsingin, 46.3% 38
elderberry flower, wild chamomile, polypody root
 - Kyrö X Ki No Bi Gin, 43.7% 26
caraway, yuzu, red shiso
- FRANCE**
- Sothis Gin, 43% 24
verbena, yarrow, sweet clover
- GERMANY**
- ◇ Amato Wiesbaden Gin, 43.7% 26
cucumber, tomato, quince
- HUNGARY**
- ◇ Opera Gin, 44% 30
citronella grass, lavender, poppy seed
- INDIA**
- Jaisalmer Handcrafted Gin, 43% 22
darjeeling green tea, vetiver, lemongrass
- NETHERLANDS**
- Rutte Celery Gin, 43% 24
celery, orange peel, cardamom
- SCOTLAND**
- ◇ Eden Mill Hop Gin, 46% 28
galaxy hops, lemon peel, juniper
- SINGAPORE**
- Rojak Gin, 45% 26
juniper, torch ginger, lemon peel
- SPAIN**
- ◇ LEVEL Gin, 44% 22
cardamom, grapefruit, angelica
 - ◇ Wint & Lila Gin, 40% 24
orange blossom, cinnamon, peppermint
- SWEDEN**
- ◇ Hernö Pink BTL Gin, 42% 32
rose petals, strawberry, vanilla
- SWITZERLAND**
- ◇ Studer Swiss Classic Gin, 40% 34
lavender, lemongrass, ginger

- ◇ Studer Swiss Gold Gin, 40% 36
citrus grass, lavender, ginger

TAIWAN

- Zhen Gin, 40% 38
bhutanese juniper, coriander, osmanthus

USA

- ◇ Nautical American Gin, 42% 22
pacific kombu, spearmint, lemongrass

VENEZUELA

- Canaima Gin, 47% 24
acai berry, uve de palma, copuazu

WALES

- ◇ Wye Valley Gin, 42% 26
elderflower, linden flowers, mugwort

BERRIES
PLUMP, ROUNDNESS, JAMMY

AUSTRIA

- ◇ Hands On Gin, 46.5% 28
blackcurrant, coriander leaves, orange peel

BELGIUM

- ◇ Lindemans Gin (with sour cherry), 40% 34
sour cherry, cardamom, orange peel

FINLAND

- Arctic Blue Gin, 46.2% 28
wild arctic bilberry, cardamom, spruce needle

- ◇ Sikkim Bilberry Gin, 40% 24
bilberry, blackberry, calamus

NORWAY

- Bivrost Arctic Gin, 44% 24
crowberry, cloudberry, rosen root

POLAND

- ◇ Polugar No. 10 Russian Gin, 38.5% 28
lingonberry, cloudberry, calamus

PORTUGAL

- ◇ Edmundo Alvarinho-Infused London Dry Gin, 40% 38
albariño grape, juniper

- ◇ Sharish Blue Magic Gin, 40% 34
blue pea flower, ginger, raspberry

SOUTH AFRICA

- Blind Tiger Rarely Sighted Gin, 43% 24
blackcurrant, grapefruit, angelica

FRUITY
EXOTIC, AUDACIOUS, NOT FRUIT FLAVOURED

AUSTRALIA

- Lawrenny Van Diemen's Gin, 42.5% 24
lime flower, almond, strawberry

- Manly Spirits Co. Lilly Pilly Pink Gin, 40% 24
rosella, sea fig, blood orange

BELGIUM			
◇	Belgin St. Cruyt Gin, 43%	28	
	<i>forest berry, lavender, sage</i>		
◇	Buss No.509 Persian Peach Gin, 40%	28	
	<i>peach, iris, vanilla</i>		
◇	Clover Gin, 40%	32	
	<i>pear, clover leaf, lavender</i>		
	Forest Dry Autumn Gin, 42%	24	
	<i>tangerine, lavender, cumin</i>		
◇	Gilliam's Premium Gin, 41%	32	
	<i>fuji apple, belgica apple, juniper</i>		
ENGLAND			
◇	Crazy Gin, 41%	32	
	<i>fruit lassi, black pepper, turmeric</i>		
	Dodd's Gin, 49.9%	24	
	<i>red raspberry leaf, bay laurel, honey</i>		
◇	Sacred Christmas Pudding Gin, 43.8%	26	
	<i>christmas pudding, frankincense, juniper</i>		
◇	That Boutique-y Spit-Roasted Pineapple Gin, 40.1%	28	
	<i>pineapple, cinnamon, nutmeg</i>		
◇	The Braemle Gin Liqueur, 24%	22	
	<i>blackberry, liquorice, lemon peel</i>		
◇	The Gin Kitchen Blushing Monkey Pink Gin, 48%	28	
	<i>black grape, ginger, allspice</i>		
IRELAND			
◇	Conncullin Irish Gin, 47%	34	
	<i>elderberry flower, hawthorn berry, angelica</i>		
◇	Mór Irish Gin, 40%	22	
	<i>rosemary, blackberry, cranberry</i>		
ITALY			
◇	Gin Agricolo Evra, 47%	26	
	<i>raspberry, mint, almond leaf</i>		
NETHERLANDS			
◇	Sikkim Privee Premium Gin, 40%	26	
	<i>red tea, cilantro, coriander</i>		
NORWAY			
	Harahorn Norwegian Gin, 46%	26	
	<i>blueberry, rhubarb, white marjoram</i>		
PHILIPPINES			
◇	Ginebra San Miguel Premium Gin, 35%	20	
	<i>juniper, coriander, berry</i>		
SCOTLAND			
◇	Eden Mill Love Gin, 42%	28	
	<i>rose petal, hibiscus, raspberry leaf</i>		
◇	Pilgrim's Original Gin, 40%	26	
	<i>grapefruit, blackcurrant, liquorice</i>		
SPAIN			
◇	Akori Gin, 42%	28	
	<i>kumquat, ginger, dragon fruit</i>		
	Get Back Blue Gin, 40%	22	
	<i>rose petal, tangerine, lemon peel</i>		
◇	Law Premium Gin, 44%	32	
	<i>spanish cucumber, prickly pear, padron pepper</i>		
SWITZERLAND			
◇	nginious! Summer Gin, 42%	40	
	<i>blueberry, peach, jasmine flower</i>		
USA			
	Dry Fly Gin, 40%	22	
	<i>apple, mint, hops</i>		
◇	Green House Artisan Gin, 40%	26	
	<i>açai, cucumber, bergamot</i>		

OVERPROOF AND NAVY STRENGTH

Gin has a rich history within the British Royal Navy, for centuries it was issued to all ships sailing the high seas. Traditionally, to prove its strength and quality, it had to be able to wet and ignite gun powder. Over time it was deduced that the lowest proof for this experiment to succeed was 114 proof, or 57% abv (alcohol by volume). This higher proof makes the gin and the botanicals shine.

CITRUS

BRIGHT, ZINGY, REFRESHING

AUSTRALIA

- ◇ Botanic Australis Navy Strength Gin, 57% 36
lemon-scented gum, bunya nut, pepperberry
- Four Pillars Navy Strength Gin, 58.8% 26
fresh ginger, turmeric, native ginger lime
- Poor Toms Fool Strength Gin, 52% 24
liquorice, green cardamom, grapefruit peel

BELGIUM

- ◇ Ginlus by Duin Gin, 50% 34
laurel, black pepper, lavender

ENGLAND

- Fords Officers' Reserve Gin, 54.5% 26
angelica, jasmine, cassia
- ◇ Hampshire Navy Strength Gunpowder Gin, 57% 30
gunpowder tea, sea buckthorn, juniper
- ◇ Mary Le Bone London Dry Gin, 50.2% 32
lemon balm, clove, lime flower
- Plymouth Navy Strength Gin, 57% 26
lemon peel, orris root, angelica
- ◇ The Distillery Navy Strength Gin, 57.3% 36
orris root, bitter orange peel, sea salt

ICELAND

- ◇ VOR Navy Strength Gin, 57% 30
thyme, angelica, crowberry

SCOTLAND

- ◇ Cadenhead's Classic Gin, 50% 24
coriander, seville orange peel, cinnamon

SINGAPORE

- Tanglin Black Powder Gin, 58% 24
fresh lemon, fresh orange, coriander

SWEDEN

- ◇ Hernö Navy Strength Gin, 57% 34
coriander, cassia, black pepper
- ◇ Strane Navy Strength London Dry Gin, 57.1% 40
lemon rind, cinnamon, liquorice

USA

- ◇ Battle Standard Navy Strength Gin, 57% 28
cardamom, coriander, cinnamon
- ◇ Leopold's Navy Strength American Gin, 57% 30
bergamot, orris root, cassia bark

FLORAL

BOUQUET, PERFUMED BLOOMS, PETALS

ENGLAND

- ◇ 57 London Dry Navy Strength Gin, 57% 28
savory, angelica, coriander
- Sipsmith VJOP Gin, 57.7% 28
juniper, coriander, orange peel
- ◇ York Outlaw Gin, 57% 32
cardamom, black pepper, lemon peel

NEW ZEALAND

- Broken Heart Navy Strength Gin, 57% 32
lavender, nelson hops, pimento

SCOTLAND

- ◇ Crossbill 200 Year Old Single Juniper Dry Gin, 59.8% 58
rosehip, juniper

HERBAL

FRESH BUNCH, DRIED LEAVES, VEGETAL

AUSTRALIA

- ◇ Animus Classic Dry Gin, 50% 28
lemon myrtle, sarsaparilla, pepperberry
- ◇ Animus Macedon Dry Gin, 50% 28
lemon myrtle, sarsaparilla, pepperberry
- ◇ Loch Distillery The Weaver Gin, 50% 24
anise myrtle, cinnamon myrtle, mace
- Old Young's Common Gin, 57.5% 24
juniper
- Old Young's Six Seasons Gin, 50% 24
sea parsley, thryptomene, desert lime
- West Winds Broadside Gin, 58% 28
salt, wattleseed, sea parsley
- West Winds Cutlass Gin, 50% 24
bush tomato, coriander, cinnamon myrtle

BELGIUM			
◇	Buss No.509 White Rain Gin, 50% <i>marjoram, verbena, angelica</i>	30	
ENGLAND			
◇	Ancient Mariner London Cut Dry Gin, 50% <i>savory, coriander, angelica</i>	32	
	Gunroom Navy Gin, 57% <i>orange peel, lemon peel, angelica</i>	28	
	Hayman's Royal Dock Gin, 57% <i>coriander, cassia, nutmeg</i>	24	
◇	Kew Organic Explorers' Strength Gin, 57.3% <i>basil, violet, lavender</i>	28	
◇	Twisted Nose Dry Gin, 52% <i>grapefruit zest, fennel seed, watercress</i>	36	
FINLAND			
	Kalevala Navy Strength Gin, 50.9% <i>jerusalem artichoke, rosemary, sea buckthorn</i>	24	
GERMANY			
◇	Gin Dur, 52% <i>mint, lime, rosemary</i>	38	
JAPAN			
	Ki No Bi Sei Gin, 54% <i>ginger, hinoki wood chip, green tea</i>	28	
NETHERLANDS			
◇	Driftwood JVS Navy Gin, 55% <i>liquorice, orris, lemon zest</i>	32	
SCOTLAND			
◇	Avva Navy Strength Scottish Gin, 57.2% <i>lime peel, mint, red clover</i>	32	
	Edinburgh Cannonball Navy Strength Gin, 57.2% <i>sichuan pepper, lemon peel, juniper</i>	30	
	Rock Rose Navy Strength Gin, 57% <i>rhodiola rose, rowanberry, sea buckthorn</i>	28	
USA			
◇	Swallowtail Navy Strength Gin, 57% <i>angelica, cardamom, grains of paradise</i>	24	
<div style="border: 1px solid black; padding: 5px; margin: 10px auto; width: fit-content;"> <p>SPICED PEPPERS, BAKING SPICES, FRAGRANT</p> </div>			
AUSTRALIA			
◇	Animus Ambrosian Gin, 50% <i>kaffir lime leaf, white sesame, fresh turmeric</i>	28	
◇	Animus Arboretum Gin, 50% <i>strawberry gum leaf, rosemary, bush tomato</i>	28	
◇	Süd Polaire Expedition Strength Gin, 57% <i>kombu, grapefruit peel, pepperberry</i>	32	
BELGIUM			
◇	GinGer by Duin Gin, 50% <i>galangal, lemon thyme, coriander</i>	36	
ENGLAND			
	Cadenhead's Old Raj Blue Gin, 55% <i>saffron, almond powder, cinnamon</i>	26	
GERMANY			
	Elephant Navy Strength Gin, 57% <i>pimento, devil's claw, buchu</i>	26	
NEW ZEALAND			
	Dancing Sands Wasabi Gin, 58% <i>wasabi, orange, horopito</i>	26	
SRI LANKA			
	Colombo Navy Strength Gin, 57% <i>sri lankan curry leaves, ginger root, coriander</i>	24	
SWEDEN			
◇	Spirit of Hven Organic Navy Strength Gin, 57.1% <i>cinnamon, cassia, juniper</i>	36	
USA			
◇	Conniption Navy Strength Gin, 57% <i>rosemary, caraway, fig</i>	28	
◇	Gun Club Gin, 50% <i>clove, nutmeg, cranberry</i>	22	
	Perry's Tot Navy Strength Gin, 57% <i>wild flower honey, cinnamon, juniper</i>	24	
<div style="border: 1px solid black; padding: 5px; margin: 10px auto; width: fit-content;"> <p>EARTHY DARK RICH SOIL, TURF, WET LEAVES</p> </div>			
AUSTRALIA			
	Lawrenny 1818 Settlers Gin, 52.5% <i>rosemary, caraway, pimento</i>	26	
	Never Never Juniper Freak Gin, 52% <i>juniper, angelica, pepperberry</i>	28	
	Never Never Southern Strength Gin, 52% <i>pepperberry, lemon peel, orris root</i>	26	
ENGLAND			
◇	Anno 60 ² Gin, 60% <i>samphire, lavender, black pepper</i>	36	
◇	Tarquin's Navy Strength Limited Edition Gin, 57% <i>cinnamon, fresh orange, orris root</i>	28	
◇	The Harbinger Navy Strength Gin, 57% <i>ginger, cardamom, fennel seed</i>	32	
USA			
◇	Far North Gustaf Navy Strength Gin, 57% <i>cucumber, fennel seed, thyme</i>	28	
<div style="border: 1px solid black; padding: 5px; margin: 10px auto; width: fit-content;"> <p>GRASSY GREENNESS, TALL GRASS, MEADOW</p> </div>			
AUSTRALIA			
	Prohibition Navy Strength Gin, 58% <i>macadamia, wormwood, saltbush gunpowder tea</i>	30	

OVERPROOF AND NAVY STRENGTH - BERRIES . FRUITY

BERRIES

PLUMP, ROUNDNESS, JAMMY

FINLAND

Arctic Blue Navy Strength Gin, 58.5% 32
bilberry, cardamom, spruce needle

FRUITY

NOT FRUIT FLAVOURED, EXOTIC, AUDACIOUS

AUSTRALIA

◇ Archie Rose Distillers Strength Gin, 52.4% 32
fresh pear, honey, elderflower

BARREL-RESTED

When a gin has been stored in a wooden cask for a period of time, imparting some of the colour and character of said wood, it is classified as a barrel-rested gin. A sub-category that has boomed in recent years but has historical precedents. Once upon a time, all gins would have been stored and transported in a barrel!

CITRUS

BRIGHT, ZINGY, REFRESHING

AUSTRALIA

Four Pillars Sherry Cask Gin, 43.8% 24
cassia, star anise, lavender

Manly Spirits Barrel Aged Gin, 45% 32
malted barley, sea lettuce, finger lime

BELGIUM

◇ Filliers Barrel Aged Dry Gin 28, 43% 32
vanilla, orange peel, liquorice

COLOMBIA

Dictador Treasure Gin, 43% 24
limon mandarina peel, lemon peel, juniper

ENGLAND

◇ Henstone Rosè Gin, 44.9% 26
angels wreath, sweet orange peel, lemon kibble

◇ That Boutique-y Double-Barrelled Gin, 46% 36
black pepper, grapefruit, bay leaf

FINLAND

Kyrö Koskue Barrel-aged Gin, 42.6% 26
birch, meadowsweet, cranberry

FRANCE

Citadelle Reserve Gin, 44% 26
yuzu, genepi, cornflower

GERMANY

◇ Raritas Juniper Gin, 46% 28
grape, orange zest, lavender

PORTUGAL

◇ Friends Gin, 43% 24
citrus peel, juniper, grapes

USA

◇ Battle Standard Barrel Finished Gin, 45% 30
cardamom, coriander, cinnamon

◇ No. 209 Cabernet Sauvignon Barrel Reserve Gin, 46% 28
hops, lemon verbena, coriander

◇ No. 209 Sauvignon Blanc Barrel Reserve Gin, 46% 28
bay leaf, bergamot, cassia

◇ Vapor Distillery Ginskey Barrel Rested Gin, 47% 28
orange peel, lemon peel, sencha tea

◇ Wire Works Special Reserve American Gin, 43.9% 24
cranberry, spruce tip, angelica

WALES

◇ Eccentric Limbeck New Western Gin, 45% 28
tarragon, seville orange, orris root

FLORAL

BOUQUET, PERFUMED BLOOMS, PETALS

CHINA

◇ Peddlers Barrel Aged Gin, 45.7% 28
sichuan pepper, buddha's hand, cubeb

ENGLAND

Hayman's Family Reserve Gin, 41.3% 26
angelica, cinnamon, coriander

Hayman's Gently Rested Gin, 41.3% 24
angelica, cinnamon, coriander

◇ Juni 93 Cask Aged Gin, 46.5% 30
coriander, cassia, juniper

FINLAND

Le Bon Tikka Barrel Aged Gin, 50.5% 28
bilberry, arctic rose petal, fennel

NEW ZEALAND

Broken Heart Barrel Aged Gin, 40% 40
lavender, orange blossom, hops

USA

◇ Dry Fly Barrel Reserve Gin, 40% 24
mint, apple, lavender

◇ Prescribed Spirits Barrel Finished Gin, 42% 24
cardamom, bergamot, cassia

◇ Swallowtail Single-Barreled Gin, 44% 22
lavender, cardamom, orange peel

HERBAL

FRESH BUNCH, DRIED LEAVES, VEGETAL

AUSTRALIA

◇ Great Southern Ginnifer Gin, 49% 24
meen, peppermint, hot pepper

BARREL-RESTED - HERBAL . SPICED**ENGLAND**

- ◇ East London Liquor Co. Ex-Bourbon Cask Gin, 41% 30
lemon peel, grapefruit peel, cardamom
- ◇ Martin Miller's 9 Moons Gin, 40% 30
lemon, lime, juniper

FRANCE

- Sorgin Yellow Gin, 42% 26
sauvignon blanc distillate, violet, broom flower

ITALY

- ◇ Berto Juniperus Cask Finish Gin, 43% 46
wormwood, rosemary, iris
- ◇ Old Grifu Gin, 42% 26
sage, thyme, elicriso

NETHERLANDS

- ◇ Brouwerij de Molen Gentle Gin, 38% 34
juniper

NEW ZEALAND

- ◇ The Source Pure Cardrona Barrel Aged Gin, 47% 28
rosehip, orange zest, lemon zest

SINGAPORE

- Suuankou Gin, 68% 38
ginseng, red dates, dried longan

SWEDEN

- ◇ Hernö Juniper Cask Gin, 47% 48
black pepper, cassia, vanilla

USA

- ◇ Breuckelen Glorious Oaked Gin, 45% 26
ginger, rosemary, grapefruit
- Corsair Barrel-Aged Gin, 46% 26
angelica, orris root, orange
- ◇ Golden Moon Cask Reserve Gin, 45% 32
mint, lavender, juniper
- ◇ Smooth Ambler Double Barrel Aged Gin, 45.9% 32
cardamom, caraway, star anise

WALES

- ◇ Da Mhile Oak Aged Gin, 42% 24
seaweed, coriander, mint

**AUSTRALIA**

- ◇ Old Young's Old B.A.G. Gin, 42% 32
lemon myrtle, aniseed, orange peel
- Prohibition Shiraz Barrel Aged Gin, 60% 30
blood orange, pink peppercorn, vanilla

CANADA

- ◇ Long Table Barrel Aged Gin, 44% 26
fennel seed, black pepper, coriander

- St. Laurent Vieux Gin, 47% 24
seaweed, grains of paradise, cubeb

COLOMBIA

- Dictador Ortodoxo Gin, 43% 22
angelica, cinnamon, juniper

ENGLAND

- ◇ Beefeater Burrough's Reserve Oak Rested Gin, 43% 38
bitter almond, coriander, orris root

- Gunroom London Dry Aged Gin, 43% 24
cinnamon, nutmeg, savory

- ◇ That Boutique-y Single Cask Bathtub Gin, 43.3% 28
cinnamon, clove, cardamom

- ◇ Two Birds Sipping Gin, 47.3% 28
orris root, juniper, coriander

FRANCE

- Fair Barrel Aged Gin, 42% 24
cardamom, calamus root, angelica

ICELAND

- ◇ An Dulaman Santa Ana Armada Strength Gin, 57% 28
sugar kelp, moss, dulce seaweed

- ◇ VOR Icelandic Barrel-aged Gin, 47% 28
wild iceland moss, crowberry, kale

IRELAND

- ◇ Shortcross Small Batch Cask Aged Gin, 44% 30
elderberry, clover, orange peel

JAPAN

- ◇ Okayama Craft Gin, 50% 28
rice shochu, coriander, juniper

NEW ZEALAND

- Dancing Sands Barrel Aged Gin, 48% 26
manuka, almond, liquorice

NEW ZEALAND

- ◇ Lubuski Aged Gin, 42% 24
licorice, cinnamon, anise

PORTUGAL

- ◇ Nao Premium Gin, 40% 22
red berry, lemon, vanilla

SCOTLAND

- ◇ Firkin Islay Cask Gin, 46% 40
angelica, orris root, coriander

SOUTH AFRICA

- ◇ Ginifer Barrel Aged Chili Infusion Gin, 43% 30
chili pepper, orange rind, juniper

- ◇ Pienaar & Son DAD Barrel Aged Gin, 43% 28
allspice, cassia, ginger

SPAIN

- ◇ Jodhpur Reserve London Dry Gin, 43% 32
coriander, ginger, grapefruit peel

◇ LEVEL Reserve Gin, 44%	24
<i>grapefruit, orange blossom, cardamom</i>	
◇ Palma Oak Aged Spiced Gin, 40.4%	26
<i>vanilla, cinnamon, cloves</i>	
Santamania Reserva Gin, 41%	26
<i>liquorice, almonds, wild rosemary</i>	
SWEDEN	
◇ Hernö Sipping Sherry Cask Gin, 46.3%	62
<i>coriander, cassia, indian black pepper</i>	
◇ Stockholms Bränneri Oak Gin, 45%	34
<i>long pepper, orange peel, juniper</i>	
USA	
Bluecoat Barrel Reserve Dry Gin, 47%	22
<i>lemon peel, angelica, coriander</i>	
◇ Bourbon Barreled Big Gin, 47%	30
<i>pepperberry, grains of paradise, cassia</i>	
Koval Barreled Gin, 47%	26
<i>rose hip, coriander, angelica</i>	
St. George Dry Rye Reposado Gin, 49.5%	26
<i>black pepper, grapefruit peel, caraway</i>	
<div style="border: 1px solid black; padding: 5px; margin: 10px auto; width: 80%;"> <p style="text-align: center;">LUSCIOUS</p> <p style="text-align: center;">DELICATE, VELVETY SWEETENED, SCRUMPTIOUS</p> </div>	
AUSTRALIA	
Four Pillars Christmas 2019 Gin, 43.8%	24
<i>christmas pudding, rutherglen muscat, star anise</i>	
◇ McHenry Barrel Aged Gin, 40%	32
<i>orange peel, cardamom, star anise</i>	
ISRAEL	
◇ Milk & Honey Levantine Oak Aged Gin, 46%	30
<i>verbena, chamomile, hyssop</i>	
ITALY	
◇ Major Riserva Gin, 47%	36
<i>piedmont cherry, peppermint, orange</i>	
Pigskin Wood Finish Gin, 40%	24
<i>mastic, sage, myrtle</i>	
NEW ZEALAND	
◇ Curiosity Negroni Gin, 55%	34
<i>manuka, lime zest, cinnamon</i>	
PHILIPPINES	
ARC Barrel Reserve Gin, 45%	24
<i>chamomile, pomelo, calamansi</i>	
SWEDEN	
◇ Strane Oaked Gin, 55%	38
<i>lemon peel, vanilla, cinnamon</i>	
USA	
◇ Barr Hill Reserve Tom Cat Gin, 43%	28
<i>raw honey, juniper</i>	

SPICED . LUSCIOUS . NUTTY . EARTHY . GRASSY . FRUITY - BARREL-RESTED

FEW Barrel Gin, 46.5%	26
<i>vanilla, cassia, cloves</i>	
◇ Griffó Chardonnay Barrel Aged, 45%	28
<i>grains of paradise, meyer lemon, honeydew melon</i>	
◇ No.209 Chardonnay Barrel Reserve Gin, 46%	28
<i>cardamom, bergamot, cassia</i>	
<div style="border: 1px solid black; padding: 5px; margin: 10px auto; width: 80%;"> <p style="text-align: center;">NUTTY</p> <p style="text-align: center;">RUSTIC, WOODY, SAVOURY EDGE</p> </div>	
AUSTRALIA	
◇ Süd Polaire Rare Oak Gin, 42%	36
<i>kombu, grapefruit peel, pepperberry</i>	
GERMANY	
Windspiel Reserve Premium Dry Gin, 49.3%	42
<i>lavender, coriander, cinnamon</i>	
<div style="border: 1px solid black; padding: 5px; margin: 10px auto; width: 80%;"> <p style="text-align: center;">EARTHY</p> <p style="text-align: center;">DARK RICH SOIL, TURF, WET LEAVES</p> </div>	
AUSTRALIA	
Giniversity Barrel Aged Gin, 49%	26
<i>cardamom, cinnamon, orange peel</i>	
GERMANY	
Elephant Cask Aged Gin, 52%	36
<i>pimento berry, devil's claw, buchu</i>	
◇ Forest Quersus Gin, 42%	32
<i>juniper, tangerine, pear</i>	
◇ Hoos Reserve Gin, 44.4%	30
<i>pine, fennel seed, cardamom</i>	
<div style="border: 1px solid black; padding: 5px; margin: 10px auto; width: 80%;"> <p style="text-align: center;">GRASSY</p> <p style="text-align: center;">GREENNESS, TALL GRASS, MEADOW</p> </div>	
JAPAN	
Ki No Bi Edition G Gin, 48.4%	32
<i>yellow yuzu, japanese cypress, bamboo</i>	
USA	
◇ No.209 Kosher For Passover Gin, 46%	28
<i>cardamom, bergamot, cassia</i>	
<div style="border: 1px solid black; padding: 5px; margin: 10px auto; width: 80%;"> <p style="text-align: center;">FRUITY</p> <p style="text-align: center;">NOT FRUIT FLAVOURED, EXOTIC, AUDACIOUS</p> </div>	
ENGLAND	
◇ Dancing Cows New Forest Oak-Aged Gin, 43%	28
<i>hops, cardamom, angelica</i>	
◇ Hart & Dart Gin, 47%	36
<i>blood orange, wormwood, curry leaf</i>	

BARREL-RESTED - FRUITY

GERMANY

◇ Diamond Red Port Cask Finish Gin, 45% 26
juniper

Monkey 47 Barrel Cut Gin, 47% 32
pomelo, lemon balm, jasmine

SCOTLAND

◇ Garden Shed Côte-Rôtie Aged Gin, 43.5% 30
lavender, dandelion root, blackberry

OLD TOM

A style of gin popular in the 18th and 19th century in a time when techniques such as sweetening or the addition of extra botanicals were used to mask the favour of poorly made (or dangerous) gins. Now it is back in a more craft iteration with variations including different sugars and wood ageing.

FLORAL

BOUQUET, PERFUMED BLOOMS, PETALS

CANADA

- ◊ Cirka Gin375 Gin, 40% 28
rose petal, honey, mint

ENGLAND

- ◊ Hammer & Son Old English Batch No.2 Gin, 44% 28
orange peel, cassia, cinnamon
- ◊ Poetic License Old Tom Gin, 41.6% 24
liquorice, rose petal, hibiscus

SCOTLAND

- ◊ Crabbie's 1891 Old Tom Gin, 43% 24
orange peel, coriander, angelica
- ◊ The House of Botanicals Old Tom Gin, 47% 26
saffron, chamomile, muscovado sugar

WALES

- ◊ Eccentric Young Tom Gin, 46% 28
fennel seed, sunflower root, star anise

HERBAL

FRESH BUNCH, DRIED LEAVES, VEGETAL

- ◊ Jensen's Old Tom Gin, 43% 22
lavender, liquorice, orris root

NETHERLANDS

- ◊ Langley's Old Tom Gin, 45% 22
nutmeg, fennel seed, coriander

SCOTLAND

- ◊ Tanqueray Old Tom Gin, 47.3% 28
angelica, coriander, liquorice

SWITZERLAND

- ◊ Modernist Old Tom Gin, 42.5% 36
orange mint, elderberry, rosemary

SPICED

PEPPERS, BAKING SPICES, FRAGRANT

CANADA

- ◊ Endeavour Old Tom Gin, 45% 26
mint, orange blossom, mulberry

FRANCE

- ◊ Citadelle No Mistake Old Tom Gin, 46% 24
cinnamon, fennel seed, cardamom

USA

- ◊ Greenhook Ginsmiths Old Tom Gin, 50.1% 26
cardamom, mace, coriander
- ◊ Valentine Liberator Old Tom Gin, 45.2% 26
black pepper, sweet red pepper, pimento

LUSCIOUS

DELICATE, VELVETY SWEETENED, SCRUMPTIOUS

AUSTRALIA

- ◊ Anther Honey Old Tom, 44% 34
macadamia nut, honey, cream

ENGLAND

- ◊ City of London Old Tom Gin, 43.3% 26
juniper, coriander, angelica
- ◊ Gin Lane 1751 Old Tom Gin, 40% 26
star anise, coriander, angelica
- ◊ Hayman's Old Tom Gin, 40% 20
liquorice, coriander, orange peel
- ◊ That Boutique-y Very Old Tom, 46.1% 38
bitter orange, liquorice, coriander
- ◊ The Distillery Old Tom Gin, 47% 32
juniper, coriander, angelica
- ◊ Two Birds Old Tom Gin, 40% 24
liquorice, orris root, coriander
- ◊ Del Professore Authentic Crocodile Old Tom Gin, 45% 24
elderflower, pepper, vanilla

JAPAN

SCOTLAND

- ◊ Makar Old Tom Gin, 43% 22
black pepper, liquorice, lemon peel

SWEDEN

- ◊ Hernö Old Tom Gin, 43% 32
lingonberry, meadowsweet, vanilla

USA

- ◊ Ebb + Flow Old Tom Gin, 44% 24
elderflower, orange peel, angelica

OLD TOM - NUTTY . EARTHY

NUTTY

RUSTIC, WOODY, SAVOURY EDGE

ENGLAND

- ◇ Sacred Old Tom Gin, 48% 28
liquorice, juniper, orange peel

EARTHY

DARK RICH SOIL, TURF, WET LEAVES

ENGLAND

- ◇ Hampshire Fine Old Tom Gin, 40% 24
calamus root, liquorice, orange peel

NORWAY

- ◇ Himkok Old Tom GIN, 41% 30
caraway seed, dill, coriander

USA

- ◇ Ransom Old Tom Gin, 44% 22
coriander, cardamom, citrus

SLOE GIN

Actually a gin liqueur, this is a traditional drink from the English countryside. Made from sloes, the plum-like fruit that grows on blackthorn hedgerows dividing old properties. Simply gin, sloe berries and sugar.

BERRIES

PLUMP, ROUNDNESS, JAMMY

AUSTRALIA		
◊ Animus Davidsonia Gin, 50%	38	
<i>sloe berry, lemon myrtle, sarsaparilla</i>		
◊ McHenry Sloe Gin, 25%	24	
<i>sloe berry, quandong, mountain pepper leaf</i>		
AUSTRIA		
Leopold Organic Sloe Gin, 27%	22	
<i>sloe berry, juniper, lemon peel</i>		
ENGLAND		
◊ Beckett's Sloe Gin, 29%	26	
<i>sloe berry, sweet orange peel, mint</i>		
◊ Chase Oak Aged Sloe Mulberry Gin, 29%	26	
<i>sloe berry, mulberry, cinnamon</i>		
Cremorne Gentleman Badger's Sloe Gin, 26%	22	
<i>sloe berry, angelica, bitter orange peel</i>		
◊ Foxdenton Estate Sloe Gin, 27%	22	
<i>sloe berry, lime flower oil, orris root</i>		
◊ Hadrian's Wall Sloe Gin, 26%	22	
<i>sloe berry, chamomile, mint</i>		
Hayman's Sloe Gin, 26%	20	
<i>sloe berry, lemon peel, nutmeg</i>		
◊ Lyme Bay Winery Reserve Liqueur Sloe Gin, 26%	22	
<i>sloe berry, lemon peel, angelica</i>		
Plymouth Sloe Gin, 26%	20	
<i>sloe berry, sweet orange peel, liquorice</i>		
Sipsmith Sloe Gin, 29%	22	
<i>sloe berry, liquorice, coriander</i>		
◊ Warner Edwards Harrington Sloe Gin, 30%	24	
<i>sloe berry, black pepper, green cardamom</i>		
GERMANY		
Elephant Sloe Gin, 35%	24	
<i>sloe berry, devil's claw, buchu</i>		
Monkey 47 Sloe Gin, 29%	24	
<i>sloe berry, pomelo, lemon balm</i>		
NETHERLANDS		
Rutte Sloe Gin, 30%	22	
<i>sloe berry, galangal, gentian</i>		
SCOTLAND		
◊ Gordon's Sloe Gin, 26%	20	
<i>sloe berry, ginger, orange peel</i>		
◊ Pickering's Sloe Gin, 30%	22	
<i>sloe berry, lime peel, clove</i>		
SWEDEN		
◊ Hernö Sloe Gin, 30%	30	
<i>sloe berry, honey, lingonberry</i>		
SWITZERLAND		
◊ Matte Sloe Gin, 28%	36	
<i>sloe berry, almond, ginger</i>		
FRUITY		
NOT FRUIT FLAVOURED, EXOTIC, AUDACIOUS		
ENGLAND		
◊ Ableforth's Sloe Gin, 33.8%	28	
<i>sloe berry, clove, orange peel</i>		
City of London Sloe Gin, 28%	26	
<i>sloe berry, orange peel, pink grapefruit peel</i>		
Hepple Sloe & Hawthorn Gin, 32%	26	
<i>sloe berry, hawthorn, amalfi lemon peel</i>		

GENEVER

Not actually gin! We keep a hefty collection of this because it's important to the history of gin. This mostly Dutch spirit is considered the precursor to what we know as gin. It's kind of like a mix between unaged whisky and gin. It is sweet, and very cereal-like.

CITRUS

BRIGHT, ZINGY, REFRESHING

BELGIUM

- ◇ Belegen Jenever Stokerij Wissels, 38% 22
juniper

NETHERLANDS

- ◇ De Borgen Holland Gin, 40.8% 26
wormwood, star anise, elderflower
- ◇ De Ooievaar Roggenaer Genever, 40% 26
juniper, lemon zest
- ◇ Legner 100% Jenever, 30% 22
juniper, lemon peel, black pepper
- Old Duff Genever, 40% 22
orange peel, star anise, liquorice
- ◇ Onder de Boompjes 100% Maltwine Genever, 40% 22
juniper, mandarin peel
- Rutte Old Tom Genever, 38% 18
wormwood, ginger, orange leaf
- ◇ Van Wees Korenwijn Rembrandt Genever, 40% 22
juniper, coriander, lemon peel

HERBAL

FRESH BUNCH, DRIED LEAVES, VEGETAL

NETHERLANDS

- Bobby's Schiedam Jenever, 38% 22
cubeb, lemongrass, rose hip
- ◇ Bokma 5 Year De Vijf Jaren Genever, 38% 24
clove, star anise, dill
- ◇ Bokma Oude Friesche Genever, 38% 26
clove, star anise, dill
- ◇ Boomsma Jonge Pure Graanjenever, 35% 20
juniper, coriander, lemon peel
- ◇ Floryn Jonge Jenever, 35% 22
ginger, vanilla, pepper
- ◇ Goblet Jonge Graanjenever, 35% 22
juniper, coriander, fennel seed
- Ketel 1 Jenever, 35% 20
pear, clove, mandarin peel

- ◇ Notaris XO Genever, 35% 28
juniper
- Onder de Boompjes Old Dutch Genever, 38% 20
mandarin peel, juniper
- ◇ Van Wees Loyal 5 Yr. Zeer Oude Genever, 40% 30
juniper, herb bouquet
- ◇ Van Wees Roggenaer 3 Year Genever, 40% 28
juniper, herb bouquet
- ◇ Wynand Fockink Rogge Jenever, 38% 30
juniper, coriander, star anise
- ◇ Zuidam Young Grain Genever, 35% 22
liquorice, aniseed, juniper

SPICED

PEPPERS, BAKING SPICES, FRAGRANT

BELGIUM

- ◇ Filliers' 38% (5 Year Old) Oude Graanjenever, 38% 36
cardamom, juniper, orange peel
- ◇ Huisjenever & Dreupelkot Korenwijn Genever, 38% 24
juniper

NETHERLANDS

- ◇ Before Gin Genever, 38% 22
cinnamon, aniseed, juniper
- ◇ Bols Jonge Graanjenever, 35% 22
apricot seed, learwyt seed, ginger
- Bols Zeer Oude Genever, 35% 20
pine sap, cumin, juniper
- ◇ By The Dutch Old Genever, 38% 22
lemon peel, coriander, star anise
- ◇ Echte Oude Friesche Genever, 38% 22
juniper
- ◇ Hooghoudt Jonge Dubbele Graan Jenever, 35% 22
wormwood, pepper, orange peel
- ◇ Rutte & Zn Jonge Graanjenever, 35% 22
angelica, coriander, orris root
- ◇ Rutte & Zn Oude 5 Jenever, 38% 22
angelica, coriander, orris root
- ◇ Van Wees Amsterdamsche Oude Genever, 35% 24
juniper, cinnamon, clove

- ◇ Verhoeven Jonge Graan Genever, 35% 22
coriander, liquorice, black pepper
- ◇ Zuidam Korenwijn 1 Year Genever, 38% 26
juniper, liquorice, aniseed

USA

- ◇ FEW Publican Genever, 45% 28
coriander, rose hip, lemon peel

LUSCIOUS

DELICATE, VELVETY SWEETENED, SCRUMPTIOUS

BELGIUM

- ◇ Filliers 1997 Vintage Grain Genever, 43% 32
juniper
- ◇ Filliers' 15 Year Old Oude Graanjenever, 38.6% 30
cinnamon, liquorice, mint

NETHERLANDS

- ◇ Blaankenheim & Nolet Oude Jenever, 38% 30
liquorice, star anise, vanilla
- ◇ Bols Corenwyn Genever, 40% 32
juniper, vanilla, clove
- ◇ De Borgen Dutch Cornwyn Genever, 38% 22
caraway, fennel, sweet woodruff
- ◇ Dubbel Gebeidi Zeer Oude Genever, 40% 24
citrus, vanilla, liquorice
- ◇ Onder de Boompjes 10% Genever, 35% 20
vanilla, lavender, angelica
- ◇ Oud Amsterdam Jonge Graan Genever, 35% 22
juniper
- ◇ Van Wees Jonge Graangenever, 35% 22
juniper, coriander, cubeb
- ◇ Zuidam 1 Year Rogge Genever, 35% 22
juniper, liquorice, aniseed
- ◇ Zuidam 3 Year Zeer Oude Genever, 38% 28
juniper, liquorice, aniseed
- ◇ Zuidam 5 Year Zeer Oude Genever, 38% 30
juniper, liquorice, aniseed

USA

- ◇ Chief Gowanus Gin, 44% 22
cluster hops, juniper

NUTTY

RUSTIC, WOODY, SAVOURY EDGE

NETHERLANDS

- ◇ Bols Genever 100% Malt Spirit, 47% 38
juniper
- ◇ Old Duff Single Malt Genever, 45% 24
juniper, bramling hops
- ◇ Rutte Old Simon Genever, 35% 22
walnut, nutmeg, celery

SPICED . LUSCIOUS . NUTTY . EARTHY . GRASSY . BERRIES - GENEVER

- ◇ Van Kleef Korenwyn Genever, 38% 26
juniper, herb bouquet
- ◇ Van Wees Roggenaer 15 Year Genever, 40% 48
juniper, herb bouquet

EARTHY

DARK RICH SOIL, TURF, WET LEAVES

NETHERLANDS

- ◇ Bols Genever, 42% 20
hops, ginger, coriander
- ◇ Olifant Jonge Graanjenever, 35% 22
juniper, coriander, liquorice
- ◇ Oud Amsterdam Dubbel Gebeide Genever, 41% 22
juniper, star anise, citrus
- ◇ Van Wees 15 Year Zeer Oude Genever, 42% 36
juniper

GRASSY

GREENNESS, TALL GRASS, MEADOW

NETHERLANDS

- ◇ Bols 6 Year Old Corenwyn Genever, 40% 32
coriander, dill, vanilla
- ◇ Hoppe Jonge Jenever, 35% 22
juniper

USA

- ◇ Anchor Genevieve Genever-Style Gin, 47.3% 30
coriander, liquorice, cubeb

BERRIES

PLUMP, ROUNDNESS, JAMMY

NETHERLANDS

- ◇ Rutte Paradyswyn Jenever, 37.9% 36
apple, cherry, coriander
- ◇ Van Wees Bessen Jenever, 20% 22
juniper, blueberry, blackberry

RARE & COLLECTABLE

The liquid history of Gin, in drinkable form! We have scoured the globe to bring you bottles from decades and even generations past, to see how Gin has evolved while remaining true to its heritage. Compare the new with the old—toast to a significant date in your own history. Or, close your eyes and transport yourself to a different age while sipping on these rare treasures.

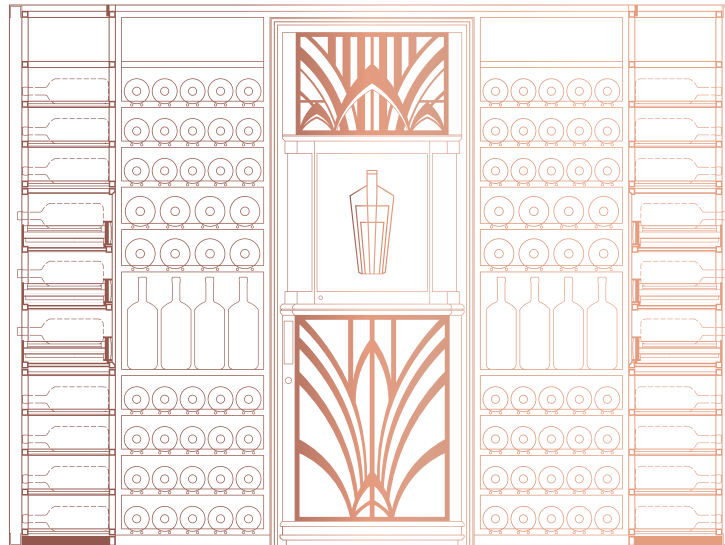
ENGLAND

◇	Beefeater Crown Jewel Batch 2 Gin (1990s), 50% <i>grapefruit peel, almond, orris root</i>	over proof	48
◇	Beefeater London Dry Gin (1970s), 40% <i>almonds, orris root, seville oranges</i>	london dry	78
◇	Booth's Finest Dry Gin (1961), 40% <i>juniper, coriander, angelica</i>	london dry	108
◇	Booth's Finest Dry Gin (1980s), 40% <i>juniper, coriander, angelica</i>	london dry	68
◇	Booth's High & Dry London Dry Gin (1940s), 45% <i>orange peel, angelica, juniper</i>	london dry	158
◇	Findlater, Mackie, Todd & Co. "Todd's" London Dry Gin (1970s), 40% <i>unknown</i>	london dry	88
◇	Findlater, Mackie, Todd & Co. "Todd's" London Dry Gin (1980s), 43% <i>unknown</i>	london dry	68
◇	Gilbey's London Dry Gin (1949-1959), 46.2% <i>orange zest, angelica, orange peel</i>	london dry	132
◇	Gordon's London Dry Gin (1930s), 47% <i>ginger, angelica, orange peel</i>	london dry	188
◇	Gordon's London Dry Gin (1950s), 40% <i>ginger, angelica, orange peel</i>	london dry	128
◇	Gordon's Special Old Tom Gin (1920s), unknown <i>unknown</i>	old tom	228
◇	Gordon's Dry Export Gin (1960s), 47.3% <i>ginger, angelica, orange peel</i>	london dry	92
◇	H. H. Shufeldt & Co.'s Imperial Gin (1900s), unknown <i>unknown</i>	london dry	260
◇	Macpherson's White Crystal Finest Dry London Gin (1930s), 47% <i>unknown</i>	london dry	188
◇	Plymouth Original Strength Gin (1990s), 41.2% <i>unknown</i>	plymouth	48
◇	R. Jackson & Sons Old Crown Gin (1930s), unknown <i>unknown</i>	london dry	178
◇	Seager's Extra Dry Gin (1940s), 40% <i>coriander, angelica, lemon peel</i>	london dry	160
◇	Seager's Superior London Dry Gin (1910s), unknown <i>unknown</i>	london dry	248
◇	Sir Robert Burnett's White Satin London Dry Gin (1980s), 40% <i>unknown</i>	london dry	68
◇	Southwark Distillers Cruiser London Dry Gin (1970s), 40% <i>unknown</i>	london dry	78

IRELAND

◇	Cork Dry Gin (1980s), 37.5% <i>coriander, angelica, lime</i>	london dry	42
ITALY			
◇	A.A. Baker's Finest Dry Gin (1960s), 43% <i>unknown</i>	london dry	90
◇	Aurum Dry Gin (1950s), 43.8% <i>unknown</i>	london dry	110
◇	Buton Dry Gin (1950s), 40% <i>unknown</i>	london dry	128
◇	Frescura Ginepro Liquore Secco Gin (1930s), 45% <i>juniper</i>	london dry	188
◇	Fulie's Estimable London Dry Gin (1960s), 40% <i>unknown</i>	london dry	98
◇	Luxardo Dry Gin (1960s), 40% <i>cinchona, cinnamon, bitter orange</i>	london dry	106
◇	Martini & Rossi "Bosford" Dry Gin (1970s), 43% <i>unknown</i>	london dry	88
◇	Martini & Rossi Bosford London Dry Gin (1960s), 43% <i>angelica, lemon peel, orange peel</i>	london dry	108
JAPAN			
◇	Ki Noh Bi Gin Cask Aged Kyoto Dry Gin 1st Edition, 48% <i>yuzu, bamboo leaf, green shansho</i>	barrel-rested	128
NETHERLANDS			
◇	Pheysey's Gin (1940s), 40% <i>unknown</i>	london dry	148
◇	Wynand Fockink Genever (1900s), 40% <i>juniper, star anise, coriander</i>	genever	238
PORTUGAL			
◇	The Hamilton Distilling Co.'s Tower of London Dry Gin (1970s), 43% <i>unknown</i>	london dry	76
◇	V.F. Fleeton Portuguese Dry Gin (1960s), 40% <i>unknown</i>	london dry	108
◇	V.F. Fleeton Portuguese Dry Gin (1970s), 40% <i>unknown</i>	london dry	78
SCOTLAND			
◇	Alexander Muir's Ascot Finest London Dry Gin (2000s), 37.5% <i>unknown</i>	london dry	40
◇	Gordon's Special Dry London Gin (2000s), 38% <i>ginger, angelica, orange peel</i>	london dry	42
◇	Grant's Special Dry Gin (1970s), 40% <i>unknown</i>	london dry	88
SPAIN			
◇	Aguila Negra Dry Gin (1960s), 40% <i>unknown</i>	london dry	98
◇	Lopez Hermanos Kintong's Gina Seca Gin (1960s), 40% <i>unknown</i>	london dry	98

THE ATLAS CHAMPAGNE COLLECTION



Champagne; a sparkling wine produced adhering to strict regulations and exclusively from the regions of Champagne, France. The Comité Interprofessionnel du vin de Champagne (CIVC) is the governing body for all the wines from Champagne. They have developed a comprehensive set of rules for the production of Champagne, which are regarded as the strictest in the world - thus, every bottle of Champagne is of a guaranteed quality and a specific profile that is unlike any other sparkling wine in the world.



Champagne is celebrated for its versatility and its romantic, rich culture. Extensively documented, Champagne's history is both wide and deep. Having a broad spectrum of styles which are made to be enjoyed in different occasions, Champagne has been present at the world's parties for hundreds of years.

We hear stories of Champagne in war time, on imperial dining tables and being the favoured tippie of the great figures of history. Perhaps it is the tiny bubbles percolating in a golden liquid that cause us to embrace all of the emotions ensconced in Champagne: love, hatred, happiness and tears.

Now is your time to enjoy the finest Champagnes the world has to offer. The ATLAS Champagne Collection is one of the largest in Asia. It has been carefully curated to bring out these sensations and stories through the finest wines from the Champagne region. Whether it is a special occasion or not, we are delighted to offer you our very favourite Champagnes to celebrate the joys in life.

The ATLAS Champagne Collection is arranged into four categories:

La Sélection: featuring beautiful Champagnes for all moments.

Le Terroir: a dedication and celebration of the 17 Grand Crus of Champagne, the single village releases that are at the heart of Champagne culture.

La Prestige: an extraordinary list of the most renowned Champagnes drawn from the Parkview Family Cellar and from the most iconic Champagne houses.

Les Collections: exclusive to ATLAS, an exceptionally rare selection of Champagne "collections," which are designed to be enjoyed as a complete sets, for the grandest of evenings.

Go ahead and explore the remarkable world of Champagne. Our wine team stands ready to assist you in your journey.

Jack Cheung, *Family Sommelier*

The ATLAS Champagne Collection On Date of Printing
268

La Sélection

- Blancs
- Rosés

Le Terroir – Montagne De Reims

- Ambonnay
- Beaumont-sur-Vesle
- Bouzy
- Louvois
- Mailly
- Puisieulx
- Sillery
- Verzenay
- Verzy

Le Terroir – Vallée De La Marne

- Aÿ
- Tours-sur-Marne

Le Terroir – Côte Des Blancs

- Avize
- Chouilly
- Cramant
- Le Mesnil-Sur-Oger
- Oger
- Oiry

Le Terroir – Mixed Grand Cru Villages

- Blancs
- Rosés

La Prestige

- Piper-Heidsieck
- Charles Heidsieck
- Krug
- Salon
- Dom Pérignon
- Pol Roger
- Louis Roederer
- Bollinger
- Taittinger
- Deutz
- G.H. Mumm
- Shipwreck Champagne

Les Collections

- Taittinger Collection
- Ulysse Collin Collection
- Jacques Selosse “Lieux-Dits” Collection

RARE & SPECIAL BOTTLES

The ATLAS Champagne Collection includes some genuine treasures, of which only one or two bottles are available. Because of the extraordinarily rare nature of these bottles, they will be crossed off once enjoyed by our guests. If your preferred Champagne is not currently available, please accept our most sincere apologies! We would be delighted to recommend a suitable alternative.

The □ symbol denotes special bottles from the Family Collection.

LA SÉLECTION

In La Sélection, we celebrate great diversity of Champagne, bringing you a wealth of styles to suit your mood and the occasion. There are famous Champagne houses represented here, with both vintage and non-vintage champagnes for you to choose from.

BLANCS

NON-VINTAGE

Diebolt-Vallois "Tradition"	NV	140
Roger Coulon "Heri-Hodie Grande Tradition" Premier Cru	NV	150
Bauget-Jouette La Carte Blanche Brut	NV	140
Serge Mathieu "Cuvée Prestige"	NV	140
Geoffroy "Pureté" Brut Nature (d: 2015-11)	NV	140
Diebolt-Vallois Blanc de Blancs	NV	145
Collet Brut Art Deco	NV	150
Bruno Paillard NV "Première Cuvée" Extra-Brut	NV	150
Philipponnat "Royale Réserve Brut" (d: 2016-02)	NV	150
Pol Roger Brut Reserve	NV	160
Etienne Calsac "L'échappée Belle" Premier Cru Extra Brut Blanc de Blancs	NV	160
Louis Roederer "Brut Premier"	NV	160
Vieille France Blanc de Blanc	NV	160
Philippe Gamet "Caractères" Extra-Brut	NV	165
Jm Gobillard Blanc de Blancs	NV	180
Lelarge-Pugeot Blanc de Blancs Extra-Brut	NV	180
Benoît Lahaye Blanc de Noirs Extra-Brut (d: 2016-10)	NV	180
Nominé Renard Blanc de Blancs	NV	185
Tarlant "Zero" Brut Nature (d: 2014-09)	NV	190
Drappier "Zero" Brut Nature Blanc de Noirs (d: 2016-09)	NV	190
Fleury Blanc de Noirs	NV	190
Etienne Calsac "Les Rocheforts" Premier Cru Blanc de Blancs	NV	190
Jean-François Launay "Grain de Folie" Blanc de Blancs	NV	220
Savart "L'Accomplie" Premier Cru Extra-Brut (d: 2017-03)	NV	220
Bérêche & Fils "Les Beaux Regards" Blanc de Blancs (v: 2012 d: 2016-03)	NV	220
Franck Pascal "Reliance" Brut Nature (d: 2014-10-02)	NV	220
Vouette & Sorbée "Fidèle" Blanc de Noirs (d: 2016-11-01)	NV	250
Drappier "Quattour" Blanc de Blancs	NV	250
Gosset Extra Brut	NV	260
George Laval Cumières Premier Cru Brut Nature (d: 2016-12-06)	NV	270
Lanson "Extra Age" (d: 2016-06)	NV	270

Larmandier Bernier Longitude Blanc de Blancs	NV	270
Emmanuel Brochet "Le Mont Benoit" Premier Cru Extra-Brut	NV	280
Chartogne-Taillet "Les Beaux Sens" Blanc de Meunier Extra-Brut (v: 2011)	NV	280
Benoît Lahaye Violaine	NV	290
Tarlant "Cuvée Louis" Extra-Brut (d: 2014-07)	NV	290
Laherte Frères "Les Empreintes" Extra-Brut (d: 2012-03)	NV	300
Bérêche & Fils "Reflet d'Antan" (d: 2016-04)	NV	380
Marie-Courtin "Efflorescence" Blanc de Noirs Extra-Brut	NV	400
Gosset "15 ans de Cave a Minima"	NV	400
Tarlant "BAM!" Brut Nature (d: 2014-11-11)	NV	420
Laherte-Frères "Les 7" Extra-Brut	NV	450
□ David Léclapart "L'Apôtre" Premier Cru Blanc de Blancs Pas Dosé (v: 2009)	NV	450
Krug "Grande Cuvée" 167 Edition	NV	460
□ David Léclapart "L'Artiste" Premier Cru Blanc de Blancs Pas Dosé (v: 2010)	NV	500
□ David Léclapart "L'Astre" Premier Cru Blanc de Noirs Pas Dosé (v: 2011)	NV	500
Doyard "La Libertine" Doux	NV	580

VINTAGE

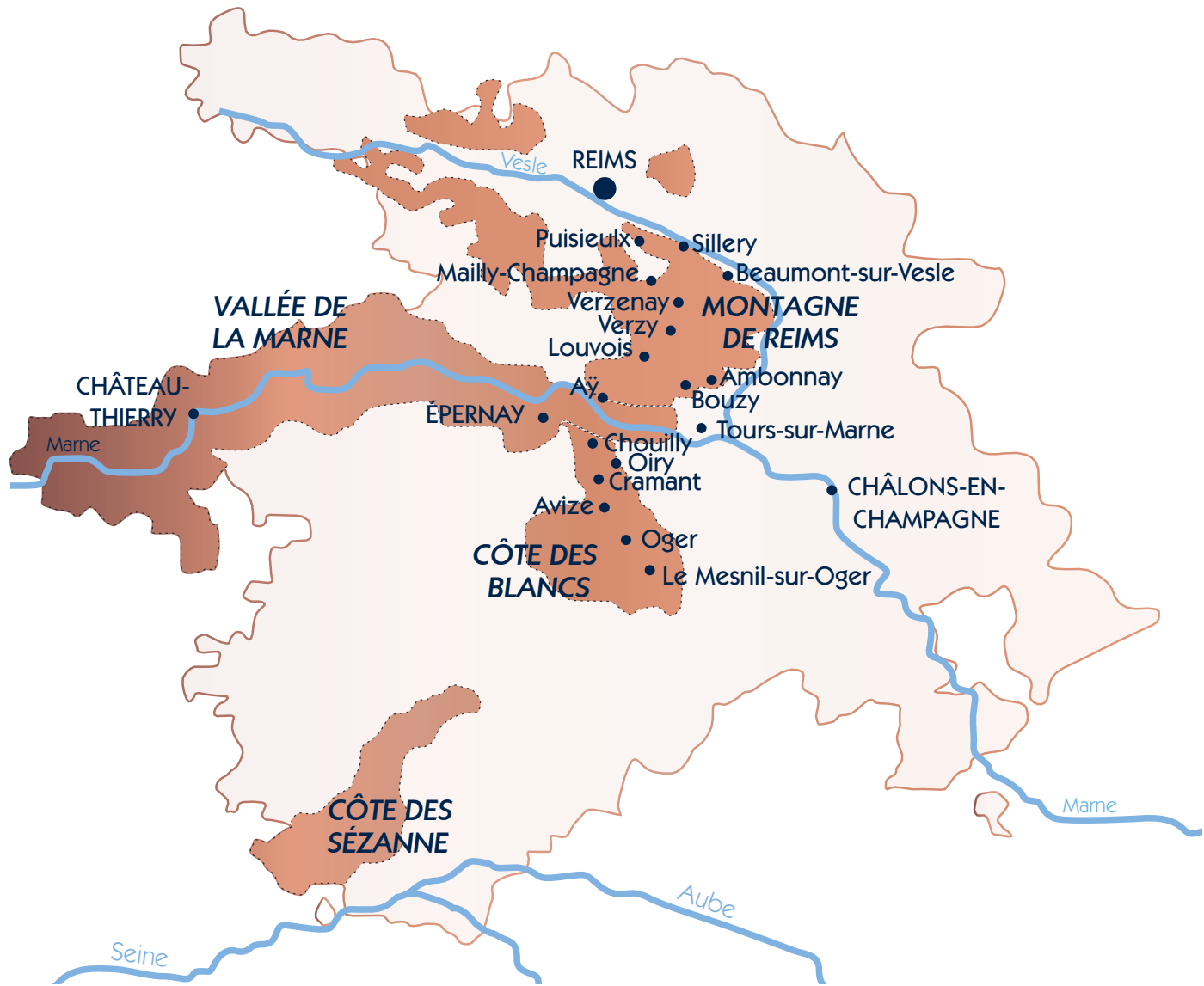
Philippe Gamet Millésime Brut Nature	2012	220
Roger Coulon Blanc de Noirs Extra-Brut	2010	230
Chartogne-Taillet "Fiacre" (v: 2010)	2010	230
Lelarge Pugeot "Les Meuniers de Clémence" Premier Cru Extra-Brut	2010	240
Laherte Frères "Les Vignes d'Autrefois" Blanc de Noirs Extra-Brut (d: 2011-01)	2007	240
Nominé-Renard "Special Club"	2011	240
L. Aubry Fils "Le Nombre d'Or Campaniae Veteres Vites"	2013	240
Geoffroy "Volupté" Premier Cru (d: 2016-06)	2008	250
Bruno Paillard "Assemblage" (d: 2012-03)	2004	250
Larmandier-Bernier "Terre de Vertus" Premier Cru Blanc de Blancs Brut Nature	2010	250
Chartogne-Taillet "Orizeaux" Blanc de Noirs Extra-Brut (v: 2011)	2011	250
Philippe Gonet Blanc de Blancs	2009	260
Roses de Jeanne / Cedric Bouchard "Les Ursules" Blanc de Noirs	2011	280
Chartogne-Taillet "Chemin de Reims" Blanc de Blancs Extra-Brut	2010	290
Pol Roger Millésime	2006	300
Francis Boulard "Les Rachais" Blanc de Blancs Extra-Brut (d: 2015-03-07)	2008	300
Duval-Leroy "Authentis Cumières" Premier Cru Blanc de Noirs	2003	300
Doyard "Clos de l'Abbaye" Premier Cru Blanc de Blancs Extra-Brut	2011	340
Vilmart & Cie "Coeur de Cuvée" Premier Cru (d: 2014-03)	2007	400
Tarlant "La Vigne d'Or" Blanc de Meuniers Brut Nature (d: 2013-02-20)	2003	400
Barons de Rothschild Blanc de Blancs	2006	600
Egly Ouriet Magnum	2004	600
Boërl & Kroff "B de Boërl & Kroff" (d: 2011-11)	2000	1000

ROSÉS

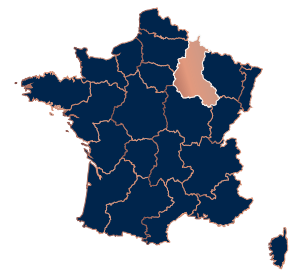


Philippe Gamet Rosé	NV	140
Diebolt-Vallois Rosé	NV	160
Drappier Rosé Brut Nature (d: 2016-08)	NV	170
Roger Coulon "Rosélie Rosé de Saignee" Premier Cru	NV	180
Pierre Péters "Rosé for Albane"	NV	185
Etienne Calsac "Rosé de Craie"	NV	190
Pommery "Brut Rosé Royal"	NV	190
Guy Charlemagne Rosé	NV	200
Philipponnat "Royale Réserve Rosé" (d: 2015-09)	NV	210
Laherte Frères "Les Beaudiers" Rosé de Saignée Extra-Brut (d: 2012-01)	NV	300
Bollinger Rosé	2006	360

CHAMPAGNE



 Grand Cru Vineyards



LE TERROIR

In this section, we adhere to the "échelle des crus" system that was developed in the mid-1900s. This system divides the villages of Champagne into three levels of quality. From the highest tier, we present the 17 Grand Crus here, which make up just nine percent of the villages in the Champagne region.

MONTAGNE DE REIMS



AMBONNAY

Paul Déthune Rosé (d: 2014-08)	NV	170
Eric Rodez "Cuvée des Crayères" (d: 2015-05)	NV	170
Paul Déthune Blanc de Noir	NV	210
Marguet Ambonnay	2010	210
Paul Déthune "Cuvée Prestige - Princesse des Thunes" (d: 2013-10)	NV	240
Eric Rodez Blanc de Noirs (d: 2016-05)	NV	270
Eric Rodez Rosé (d: 2016-05)	NV	300
H. Billiot & Fils "Cuvée Laetitia" (d: 2013-10-21)	NV	340
Marie-Noelle Ledru "Cuvée du Goulté" Blanc de Noirs Extra-Brut	2012	360
Marie-Noelle Ledru Millésime Brut Nature	2008	380
Egly-Ouriet "Les Crayères" Blanc de Noirs	NV	380
Paul Déthune "Cuvée à l'Ancienne" (d: 2012-01)	NV	550
Marguet Père & Fils "Les Crayères" Extra-Brut (d: 2016-03)	2011	600
Marguet Père & Fils "La Grande Ruelle" Blanc de Noirs Extra-Brut (d: 2016-03)	2011	600
Marguet Père & Fils "Le Parc" Blanc de Blancs Extra-Brut (d: 2016-03)	2011	600
Marguet Père & Fils "Les Bermonts" Blanc de Blancs Extra-Brut (d: 2014-12)	2010	600
Marguet Père & Fils "Les Crayères" Extra-Brut (d: 2014-07)	2009	600

BEAUMONT-SUR-VESLE

Paul Sadi "Clos Virgile"	2012	290
--------------------------	------	-----

BOUZY

Baron d'Auvergne "La Marguerite en Folie"	NV	260
Pierre Paillard "Les Maillerettes" Blanc de Noirs Extra-Brut (d: 2016-04)	2010	300
Pierre Paillard "Les Mottellettes" Blanc de Blancs Extra-Brut (d: 2016-03)	2010	300
Camille Savès "Cuvée Anaïs Jolicoeur"	2012	350
Duval-Leroy "Authentis Bouzy" Blanc de Noirs Brut Nature	2005	350
Camille Savès "Les Loges" Blanc de Noirs	NV	400
Brice "Bouzy Millésime"	2008	400
Benoît Lahaye "Le Jardin de la Grosse Pierre" Brut Nature (d: 2016-02)	2011	500

LOUVOIS

Guy de Chassey "Cuvée Antide"	NV	300
-------------------------------	----	-----

MAILLY

Ernest Remy Blanc de Noirs	NV	300
Ernest Remy Blanc de Noirs Demi-Sec	NV	300
Champagne "L'Intemporelle" Mailly	2007	450

PUISIEULX

Chaumont Blanc de Blanc	2008	220
François Secondé "Les Petites Vignes"	NV	350

SILLERY

François Secondé Blanc de Blancs	2008	220
François Secondé "La Loge" Blanc de Noirs	NV	270

VERZENAY

Bernard Hatte "Cuvée Benjamin"	2012	240
Godmé Père et Fils Brut Millésimé	1999	350

VERZY

Louis de Sacy "Grand Soir"	2003	450
----------------------------	------	-----

VALLÉE DE LA MARNE

Aÿ

Gaston Chiquet "Blanc de Blancs d'Aÿ" (d: 2016-03)	NV	220
Philipponnat "Le Léon" Blanc de Noirs Extra-Brut (d: 2015-02)	2006	550
Jacquesson "Vauzelle Terme" Blanc de Noirs Extra-Brut (d: 2013-02-13)	2004	800
□ Jacques Selosse Lieux-Dits "La Côte Faron" Blanc de Noirs Extra-Brut (d: 2014-03-04)	NV	1300
□ Henri Giraud Blanc de Blancs	2004	1400
□ Henri Giraud "Argonne" Blanc de Blancs	2002	1600

TOURS-SUR-MARNE

Lamiable "Cuvée Heliades" Rosé	NV	270
Lamiable "Les Meslaines" Blanc de Noirs	2009	350
Lamiable "Cuvée Heliades"	2011	360
Lamiable "Cuvée Pheerie" Blanc de Blancs	2008	400
Harlin Pere et Fils "Cuvée Ephémère" Blanc de Noirs Extra-Brut (d: 2016-04)	2010	400

CÔTE DES BLANCS

AVIZE

Franck Bonville "Camille Bonville" Blanc de Blancs	NV	180
Varnier-Fannièrre "Cuvée St-Denis" Blanc de Blancs	NV	260
Pierre Callot "Clos Jacquin" Blanc de Blancs	NV	350
Larmandier-Bernier "Les Chemins d'Avize" Blanc de Blancs Extra-Brut	2010	410
Jacquesson "Champ Caïn" Blanc de Blancs Extra-Brut (d: 2013-02-27)	2004	900

CHOUILLY

Jack Legras "Cuvée Le Mont Aigu" Blanc de Blancs	NV	235
Lenoble "Les Aventures" Blanc de Blancs	NV	350
R&L Legras "Saint-Vincent" Blanc de Blancs	2000	350
Veuve J. Lanaud "Les Prêtrosses" Blanc de Blancs (d: 2016-07-30)	2008	360

CRAMANT

G.H. Mumm "Mumm de Cramant" Blanc de Blancs (d: 2014-02)	NV	250
Bonnaire "Prestige" Blanc de Blancs	NV	350

LE MESNIL-SUR-OGER

Pierre Moncuit "Nicole Moncuit" Vieille Vignes Blanc de Blancs	2004	290
Pierre Moncuit "Nicole Moncuit" Vieille Vignes Blanc de Blancs	2005	320

OGER

Jean Milan "Terres de Noël" Blanc de Blancs	2009	250
Pierre Gimonnet "Special Club" Blanc de Blancs	2012	290
Franck Bonville "Les Belles Voyes" Blanc de Blancs	NV	350
□ Claude Cazals "Clos Cazals" Blanc de Blancs Extra-Brut	2002	450

OIRY

Christophe Martin Blanc de Blancs	2010	310
Suenen Blanc de Blancs Extra-Brut	NV	380

MIXED GRAND CRU VILLAGES



BLANCS

Delamotte Blanc de Blancs	NV	180
Petit le Brun et Fils Blanc de Blancs	NV	180
De Sousa "Réserve" Blanc de Blancs	NV	190
Lancelot-Royer "Cuvée des Chevaliers" Blanc de Blancs	NV	190
Pierre Péters Blanc de Blancs Extra-Brut	NV	190
Chapuy "Livree Noire"	2006	200
Bruno Paillard Blanc de Blancs Extra-Brut (d: 2014-03)	MV	210
De Sousa "Mycorhize" Blanc de Blancs Extra-Brut	NV	220
Lallier "Millesimés"	2005	230
Petit et Bajan "Nuit Blanche" Blanc de Blancs (d: 2017-05-03)	NV	270
Benoît Lahaye "Late Disgorgement" Extra Brut (d: 2016-10)	2007	270
Dhondt-Grellet "Prestige du Moulin" Blanc de Blancs	NV	280
Ayala Blanc de Blancs (d: 2015-09)	2008	290
Pierre Péters "Réserve Oubliée" Blanc de Blancs	NV	290
Taittinger "Prélude"	NV	290
Egly-Ouriet "Vieillessement Prolongé" Extra-Brut	NV	300
Philipponnat "Cuvée 1522" (d: 2016-03)	2006	300
Suener "C+C" Blanc de Blancs Extra-Brut	NV	380
Ayala "Cuvée Perle d'Ayala"	2005	390
Delamotte Blanc de Blancs	2002	400
Suener Blanc de Blancs Extra-Brut	2009	450
Bruno Paillard Blanc de Blancs (d: 2013-04)	2004	500
□ Delamotte "Collection" Blanc de Blancs (Magnum)	1970	3500

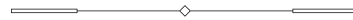
ROSÉS

Marguet Père & Fils "Shaman 12" Rosé Extra-Brut	NV	210
Egly-Ouriet Grand Cru Brut Rosé	NV	240
Petit et Bajan "Nymphaea" Rosé (d: 2017-05-03)	NV	300

LA PRESTIGE

This section shares our family's philosophy about being a patient and persistent collector of some of the finest things in the world. This value is shared by our family and many of the traditional Champagne families. Here we present truly extraordinary Champagnes from the Parkview Family Cellar and some of the greatest Champagne houses. "Prestige Cuvée" is the word used by the houses to describe their, and therefore our, best offerings.

PIPER-HEIDSIECK



Credited as a Champagne worthy of a queen, Marie Antoinette was the first brand ambassador of Piper-Heidsieck back in 1785. Cuvée Rare was created in 1885 to celebrate its centennial with a bottle designed by Pierre-Karl Fabergé, star jeweler of Russian Tsar Alexander III. Piper today still gives the same dash of seduction it has since 1785.

Piper-Heidsieck Cuvée Réserve Essentiel ATLAS	NV	170
Piper Heidsieck Millésime	2008	210
Piper-Heidsieck Rare	2002	380

CHARLES HEIDSIECK



In 1851, at the young age of 29, Charles Heidsieck founded the house bearing his own name. Now owned by the EPI group since 2011, the house is gaining its former glory as one of the most highly esteemed champagne houses of the century. Headed by Cellarmaster Cyril Brun, these champagnes are characterized by freshness, power, richness and elegance.

Charles Heidsieck "Brut Réserve" (d: 2016)	NV	170
Charles Heidsieck Brut Magnum	NV	240
Charles Heidsieck Millésime (d: 2015)	2005	260

KRUG

Behind every precious drop of Krug stands the dream of a visionary. One man who, long before others, understood that the essence of Champagne is pleasure. Over 170 years ago, Joseph Krug broke with convention to follow this vision. In doing so, he created some of most generous expressions of Champagne each year. This tradition continues to this day.

□ Krug "Clos d'Ambonnay" Grand Cru Blanc de Noirs	1995	5400
□ Krug "Clos d'Ambonnay" Grand Cru Blanc de Noirs	1996	7000
□ Krug "Clos d'Ambonnay" Grand Cru Blanc de Noirs	2000	8000
□ Krug "Clos du Mesnil" Grand Cru Blanc de Blancs	1988	6500
□ Krug "Clos du Mesnil" Grand Cru Blanc de Blancs	1989	5000
□ Krug "Clos du Mesnil" Grand Cru Blanc de Blancs	1990	4900
□ Krug "Clos du Mesnil" Grand Cru Blanc de Blancs	1992	4500
□ Krug "Clos du Mesnil" Grand Cru Blanc de Blancs	1998	5000
Krug "Grande Cuvée" 167 Ème Édition	MV	460
Krug "Grande Cuvée"	MV	480
Krug	2000	780
Krug	2004	580

SALON

Salon was created as a private label, from similar beginnings as the more famous Cristal. Since its first vintage in 1905, Salon was shared among private clients and friends of the visionary Eugène Aimé Salon, who believed that the Chardonnay in Le-Mesnil-Sur-Oger could make fine and elegant Champagnes without blending with Pinot Noir and Pinot Meunier. And so the idea of Blanc de Blancs was born.

□ Salon "S" Le Mesnil Grand Cru Blanc de Blancs	1971	9000
□ Salon "S" Le Mesnil Grand Cru Blanc de Blancs	1990	5000
□ Salon "S" Le Mesnil Grand Cru Blanc de Blancs	1995	3500
□ Salon "S" Le Mesnil Grand Cru Blanc de Blancs	1996	3500
□ Salon "S" Le Mesnil Grand Cru Blanc de Blancs	1997	2000
□ Salon "S" Le Mesnil Grand Cru Blanc de Blancs	1999	2000

DOM PÉRIGNON

First released in 1921, during the dawn of the Art Deco era, this Champagne bears the same name as the famous Benedictine monk who arguably created Champagne. One of the first “Cuvée” concepts, it was soon destined to be one of the blue bloods of Champagne.

Dom Pérignon "Chefs de Cave Legacy Edition"	2008	850
□ Dom Pérignon "Plénitude Troisième (P3)"	1971	8000
□ Dom Pérignon "Réserve de l'Abbaye"	1990	4000
□ Dom Pérignon	1947	6000
□ Dom Pérignon	1964	3000
□ Dom Pérignon	1969	3000
□ Dom Pérignon	1971	2900
□ Dom Pérignon	1973	2800
□ Dom Pérignon	1976	2400
□ Dom Pérignon	2009	450
□ Dom Pérignon (Jeroboam)	2000	6300
□ Dom Pérignon Rosé	1996	1900
Dom Pérignon	1990	1200
Dom Pérignon	2010	450

POL ROGER

The relationship of Pol Roger and the beloved Sir Winston Churchill was never a commercial or superficial one. Pol Roger had been the favourite champagne of Churchill since 1908 and had even befriended Madame Odette Pol-Roger at a party at the British Embassy in Paris in 1944. In 1984 Pol Roger honored this legendary relationship with the release of the Pinot Noir-dominant Cuvée Sir Winston Churchill.

Pol Roger "Cuvée Sir Winston Churchill"	1979	3500
Pol Roger "Cuvée Sir Winston Churchill"	1988	3000
Pol Roger "Cuvée Sir Winston Churchill" (Magnum)	1999	2000
□ Pol Roger "Cuvée Sir Winston Churchill" (Magnum)	2002	1500
Pol Roger "Cuvée Sir Winston Churchill" (Magnum)	2004	1700
Pol Roger "Cuvée Sir Winston Churchill" (Jeroboam)	1988	12000

LOUIS ROEDERER

Being the favourite house of Tsar Alexander II, Louis Roederer technically created the world's first "Prestige Cuvée" for the paranoid Tsar in 1876. Living in fear of assassination by poisons and bombs, he ordered a Champagne in clear bottles and with a flat bottom, to be made and served for the famous Three Emperors Dinner at Café Anglais in Paris. The first commercially available vintage of Cristal was 1945, many decades after the original release. Yet the famous story of its founding remains part of Champagne's rich history.

□ Louis Roederer "Cristal"	1964	8000
□ Louis Roederer "Cristal"	1966	6000
□ Louis Roederer "Cristal"	1976	4900
□ Louis Roederer "Cristal"	1981	3000
□ Louis Roederer "Cristal"	2008	680

BOLLINGER

Known as the famed James Bond Champagne, Bollinger is one of most respected Champagne houses. Bollinger's famous Prestige Cuvée, "La Grande Année" is not the only sought-after label from this house, The "Vieilles Vignes Françaises" made from parcels of ungrafted Pinot Noir and the late disgorgement "Récemment Dégorgé (R.D.)" label are also on the top of connoisseurs' lists.

□ Bollinger "Récemment Dégorgé (R.D.)" Extra Brut (<i>Silver Jubilee Edition</i>)	1966	5000
□ Bollinger "Récemment Dégorgé (R.D.)" Extra Brut	1979	2000
□ Bollinger "Récemment Dégorgé (R.D.)" Extra Brut	1981	1800
□ Bollinger "Récemment Dégorgé (R.D.)" Extra Brut (Magnum)	1973	4500
□ Bollinger "Vieilles Vignes Françaises" Blanc de Noirs	1986	6000
□ Bollinger "Vieilles Vignes Françaises" Blanc de Noirs	1989	6000
□ Bollinger "Vieilles Vignes Françaises" Blanc de Noirs	1990	8000
□ Bollinger La Grande Année	2007	500
□ Bollinger La Grande Année	2012	480

TAITTINGER

The name Taittinger is very much associated with the French political world. Pierre Taittinger, was a powerful politician and a champagne distributor. Pierre restored the House of the Counts of Champagne in Reims during his lifetime, before it was unfortunately destroyed by the Germans during the World War II. The Prestige Cuvée of Taittinger was created to commemorate the powerful reign of the Counts of Champagne during the Medieval Ages.

Taittinger "Comte de Champagne" Blanc de Blancs	1982	2100
Taittinger "Comte de Champagne" Blanc de Blancs	2006	500
□ Taittinger "Comte de Champagne" Blanc de Blancs (Magnum)	1986	4000

DEUTZ

Established in 1838, Deutz has a glorious past. Being the favourite Champagne of the English in the 1900s, Deutz exported more than 600,000 bottles to the United Kingdom by then. The company is a living fossil, which is a testament to the glorious history of Champagne as one of the most celebrated drinks in the world. Nowadays Deutz is a rare find, especially its prestigious tribute to the owner, the Cuvée William Deutz.

Deutz "Cuvée William Deutz"	2002	420
Deutz "Cuvée William Deutz"	1961	3000
□ Deutz "Cuvée William Deutz" (Jeroboam)	1990	7000
Deutz "Cuvée Amour de Deutz"	1999	600
Deutz "Cuvée Amour de Deutz"	2005	700

G. H. MUMM

Established in 1827, this German family created the famous "Cordon Rouge", a silk ribbon on each bottle of Champagne, which became iconic in the Champagne bottle designs. By 1904, Mumm became the official supplier of Champagne to British royalty. Mumm's prestige cuvée is named after the visionary man who led Champagne Mumm into quality and international prestige in the 20th Century.

□ G.H. Mumm "Cuvée René Lalou"	1973	1800
G.H. Mumm "Cuvée René Lalou"	1976	1800

SHIPWRECK CHAMPAGNE

On 26 October 1916, amidst the devastation of the World War I, a small Swedish smuggling schooner named “Jönköping” was being quietly loaded with contraband in the city of Gävle in the south of Sweden. Among the packing list was a modest 3,000 bottles of Champagne, tasted, liked and ordered by Tsar Nikolai II, the last Emperor of the Russian Empire. It was Jönköping’s tenth smuggling journey of the year.

Everything seemed to go smoothly, with none of the crew suspecting that this trip would be their last.

The day was 3 November of 1916, when a German U-22 submarine intercepted this unlucky Jönköping off the Finnish coast and sank it along with its haul of precious contraband. The Champagnes together with the Jönköping, since then, quietly slept at a depth of 64 meters under the sea, for the next 82 years.

Jönköping was salvaged in 1998, its cargo held the 1907 Heidsieck & Co. Monopole “Goût Américain”, a Champagne which was also served on the famous Titanic (ironically also sunk in 1912). Fortunately, due to the perfect pressure and temperature deep in the Baltic sea, many of the original 3,000 Champagne bottles made it through this 90-year transcendence of time safely, with corks intact and no leakage.

□ Heidsieck & Co. Monopole “Goût Américain”	1907	190,700
Heidsieck & Co. Monopole “Goût Américain” Extra Dry	NV	170

LES COLLECTIONS

In this section we feature some of the core collections which our family carefully purchased and curated over the years. These treasured collections reach a synergy when presented as a series and will bring you a unique experience.

We would like to share the stories they want to tell, like chapters of a grand novel, only complete when they are put together.

TAITTINGER COLLECTION



“Imagine a bottle of Champagne as a canvas. Imagine that the wine it contains is a muse. Then introduce a great artist to a great vintage...”

It is believed by many winemakers that winemaking is like painting, where the grapes are the canvas provided by the almighty Mother Nature. Champagne Taittinger nurtured the idea of art in wine and wine in art, inviting world famous artists to design the labels for champagne bottles. The birth of the Taittinger Collection series sees its 13th member in 2016. This collection is not just a list of the finest Champagnes, but also an archive of the quintessence of modern art.

- | | |
|---|------|
| □ Taittinger Collection Series #1 “Vasarely” | 1978 |
| □ Taittinger Collection Series #2 “Arman” | 1981 |
| □ Taittinger Collection Series #3 “Masson” | 1982 |
| □ Taittinger Collection Series #4 “Da Silva” | 1983 |
| □ Taittinger Collection Series #5 “Lichtenstein” | 1985 |
| □ Taittinger Collection Series #6 “Hartung” | 1986 |
| □ Taittinger Collection Series #7 “Imai” | 1988 |
| □ Taittinger Collection Series #8 “Corneille” | 1990 |
| □ Taittinger Collection Series #9 “Matta” | 1992 |
| □ Taittinger Collection Series #10 “Zao Wou Ki” | 1998 |
| □ Taittinger Collection Series #11 “Rauschenberg” | 2000 |
| □ Taittinger Collection Series #12 “Sow” | 2002 |

Complete set of 12 bottles 11000

ULYSSE COLLIN "QUINTET" COLLECTION



In 2001, after his apprenticeship with Jacques-Selosse, Olivier Collin was inspired by the master Anselme Selosse to create his own Champagne with part of his family's vineyards in Sézennais. Driven by the same passion towards the land, Olivier carefully made Champagnes with respect to nature as much as possible.

This collection showcases the four parcels which Olivier has separately vinified and perfected throughout the years, a true expression of land and respect for the terroir.

- | | |
|---|------|
| □ Ulysse Collin Quintet Collection #1
"Les Enfers" Blanc de Blancs Extra Brut | 2010 |
| □ Ulysse Collin Quintet Collection #2
"Les Perrières" Blanc de Blancs Extra Brut | 2012 |
| □ Ulysse Collin Quintet Collection #3
"Les Roises" Blanc de Blancs Extra Brut | 2011 |
| □ Ulysse Collin Quintet Collection #4
"Les Maillons" Rosé de Saignée Extra Brut | 2012 |
| □ Ulysse Collin Quintet Collection #5
"Les Maillons" Blanc de Noirs Extra Brut | 2012 |

Complete set of 5 bottles 2000

JACQUES SELOSSE “LIEUX-DITS” COLLECTION



Champagne making was never easy, and has always been time and labour intensive. Due to the large amounts of capital required, Champagne production was originally dominated by big houses with financial power: Les Grandes Marques.

Les Grandes Marques, apart from owning vineyards and producing their own grapes, also purchased grapes from farmers, but these relationships did not hold for long.

As the technology and know how became more accessible to the farmers, they realised it was more profitable to make and bottle their own Champagnes; thus began a flourishing era of Grower (Récoltant-Manipulant) Champagne houses.

Among the first was Jacques Selosse, who started his humble Champagne house in the 1950s. Now the house is in the hands of Jacques' son Anselme, who brought the house to the pinnacle of Burgundian terroir-driven, biodynamic winemaking in Champagne.

This collection showcases the six specific parcels (Lieux-Dits) identified by Anselme as special and expressive in style, which he has separately vinified and perfected through the years.

- | | |
|--|----|
| □ Jacques Selosse “Lieux-Dits Sous Le Mont”
Extra Brut Blanc de Noirs (<i>Mareuil-sur-Aÿ, Premier Cru</i>) | NV |
| □ Jacques Selosse “Lieux-Dits Le Bout du Clos”
Extra Brut Blanc de Noirs (<i>Ambonnay, Grand Cru</i>) | NV |
| □ Jacques Selosse “Lieux-Dits La Côte Faron”
Extra Brut Blanc de Noirs (<i>Aÿ, Grand Cru</i>) | NV |
| □ Jacques Selosse “Lieux-Dits Les Carelles”
Extra Brut Blanc de Blancs (<i>Le Mesnil-sur-Oger, Grand Cru</i>) | NV |
| □ Jacques Selosse “Lieux-Dits Les Chantereines”
Extra Brut Blanc de Blancs (<i>Avize, Grand Cru</i>) | NV |
| □ Jacques Selosse “Lieux-Dits Chemin de Châlons”
Extra Brut Blanc de Blancs (<i>Cramant, Grand Cru</i>) | NV |

Complete set of 6 bottles 5000



WINES OF THE WORLD

Presenting our appreciation for the finer things in life.
A carefully curated collection sourced from all around the globe.

WHITE

Montecillo Blanco 2014 Rioja, Spain • Viura, Sauvignon Blanc, Tempranillo Blanco	75
Tselepos Classic Mantinia 2017 Peloponnese, Greece • Moschofilero	80
Domaines Schlumberger Les Princes Abbés 2016 Alsace, France • Pinot Gris	85
Guthermansberg Hermannsberg “Just Riesling!” 2016 Nahe, Germany • Riesling	85
Weingut Robert Weil Riesling Trocken 2018 Rheingau, Germany • Riesling	85
Dionysos Mantinia 2017 Mantinia, Greece • Moschofilero	90
Marchesi di Barolo Gavi DOCG 2016 Piemonte, Italy • Cortese	90
Weingut Meyer-Nakel Illusion Blanc de Noir 2015 Ahr, Germany • Pinot Noir	90
Zilliken Butterfly 2016 Mosel, Germany • Riesling	90
Louis Moreau Chablis 2018 Burgundy, France • Chardonnay	95
Ktima Gerovassiliou Single Vineyard 2016 Macedonia, Greece • Malagousia	100
Pietracupa Fiano di Avellino DOCG 2015 Campania, Italy • Fiano	100
Sterling Vintner’s Collection 2016 Central Coast, USA • Chardonnay	100
Domaine Rolet Pere & Fils Arbois Blanc Tradition 2011 Jura, France • Chardonnay, Savagnin	105

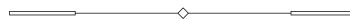
WINES OF THE WORLD - WHITE

Domaine Regis Jouan Sancerre 2019 Loire Valley, France • Sauvignon Blanc	110
Domaine Vacheron Sancerre 2018 Loire Valley, France • Sauvignon Blanc	110
Giacomo Ascheri 'Cristina Ascheri' 2016 Piemonte, Italy • Arneis	110
Mario Schiopetto Collio DOC 2017 Friuli-Venezia Giulia, Italy • Pinot Grigio	110
Tournon Landsborough 2016 Victoria, Australia • Chardonnay	110
Clos Henri Estate 2018 Marlborough, New Zealand • Sauvignon Blanc	120
Coldstream Hills 2018 Yarra Valley, Australia • Chardonnay	120
Marcel Deiss 2015 Alsace, France • Riesling	120
Sartori "Marani" Bianco Veronese IGT 2015 Veneto, Italy • Garganega	120
Yves Cuilleron "Les Vignes d'à Côté" 2018 Rhône Valley, France • Viognier	120
Mme Laroche, Domaine aux Moines Savennières-Roche aux Moines 1999 Loire Valley, France • Chenin Blanc	130
Jean-Paul & Benoît Droin 1er Cru Vaillons Chablis 2013 Burgundy, France • Chardonnay	130
Domaine Guiberteau Saumur 2009 Loire Valley, France • Chenin Blanc	135
François Pinon Moelleux Vouvray 2003 Loire Valley, France • Chenin Blanc	135
Wagner-Stempel Heerkretz Spätlese 2014 Rheinhessen, Germany • Riesling	140
Domaine Guiberteau "Clos de Guichaux" Saumur 2008 Loire Valley, France • Chenin Blanc	140
Schuchmann 'Vinoterra' Kisi 2012 Khaketi, Georgia • Kisi	145
Domaine Paul Pillot 1er Cru Les Charmois Saint-Aubin 2014 Burgundy, France • Chardonnay	150
Henri Bourgeois La Demoiselle de Bourgeois Pouilly-Fume 2015 Loire Valley, France • Sauvignon Blanc	150
Mme Laroche, Domaine aux Moines Savennières-Roche aux Moines 2013 Loire Valley, France • Chenin Blanc	150
Weingut Johann Topf "Hasel" 2007 Niederosterreich, Austria • Sauvignon Blanc	150
Domaine Rolet Père & Fils Arbois Vin Jaune (620ml) 2009 Jura, France • Savagnin	160

WHITE - WINES OF THE WORLD

<p>Domaine Weinbach Reserve Personelle 2016 Alsace, France • Gewurztraminer</p>	160
<p>Hirsch Kammerner Lamm Reserve 2011 Kamptal, Austria • Grüner Veltliner</p>	160
<p>Lucien Le Moine Bourgogne Blanc 2015 Burgundy, France • Chardonnay</p>	160
<p>Schmelz Grüner Smaragd Best Of 2012 Wachau, Austria • Grüner Veltliner</p>	160
<p>Radikon Ribolla Gialla (500ml) 2010 Friuli-Venezia Giulia, Italy • Ribolla Gialla</p>	170
<p>V. Guibert de la Vaissière Mas de Daumas Gassac 2016 Languedoc-Roussillon, France • Viognier, Petit Manseng</p>	180
<p>Domaine Faiveley Puligny-Montrachet 2017 Burgundy, France • Chardonnay</p>	200
<p>Domaine Simha "Rani" 2013 Tasmania, Australia • Riesling</p>	200
<p>Egon Müller Scharzhofberger Kabinett 2011 Mosel, Germany • Riesling</p>	220
<p>Louis Moreau Grand Cru Les Clos Chablis 2015 Burgundy, France • Chardonnay</p>	220
<p>Domaine Dehours Mareuil Le Port Côteaux Champenois 2011 Champagne, France • Chardonnay</p>	240
<p>Étienne Guigal Condrieu 2015 Rhône Valley, France • Viognier</p>	250
<p>Château Pape-Clément Blanc Pessac-Léognan 2004 Bordeaux, France • Semillion, Sauvignon Blanc</p>	340
<p>Joseph Drouhin 1er Cru Morgeot "Marquis de Laguiche" Chassagne-Montrachet 2014 Burgundy, France • Chardonnay</p>	380
<p>Vincent Girardin 1er Cru Les Genevrières Meursault 2005 Burgundy, France • Chardonnay</p>	430
<p>Domaine François Mikulski Meursault 1er Cru Poruzots 2012 Burgundy, France • Chardonnay</p>	460
<p>Vincent Girardin Corton-Charlemagne 2015 Burgundy, France • Chardonnay</p>	470

ROSÉ



Tournon Mathilda Rosé 2018 Victoria, Australia • Grenache	70
Moulin de Gassac “Guilhem” Rosé IGP Pays de l’Herault 2019 Languedoc-Roussillon, France • Syrah, Carignan	75
Studio by Miraval Rosé 2019 IGP de Méditerranée , France • Cinsault, Grenache, Rolle, Tibouren	75
Château d’Ollières 2019 Provence, France • Cinsault, Grenache	100

RED



Tenimenti Mancini ‘Podere della Filandra’ Chianti DOCG 2018 Tuscany, Italy • Sangiovese	85
IBY Merlot Reserve 2014 Burgenland, Austria • Merlot	90
Domaine Faiveley Bourgogne 2018 Burgundy, France • Pinot Noir	95
Weingut Dr. Heger Spätburgunder Merdinger Bühl 2013 Baden, Germany • Pinot Noir	95
Vietti Tre Vigne Barbera d’Asti DOCG 2017 Piedmont, Italy • Barbera	100
Lethbridge “Que Syrah Syrah” 2017 Victoria, Australia • Syrah	110
Château Rouchet Haut-Médoc 2014 Bordeaux, France • Merlot	110
Antoine Sanzay Saumur-Champigny 2014 Loire Valley, France • Cabernet Franc	120
Domaine Rolet Père & Fils Arbois Rouge Tradition 2012 Jura, France • Poulsard, Trousseau, Pinot Noir	120
Dashe Cellars Dry Creek Valley 2014 Sonoma, USA • Zinfandel	130
Château Bechereau Lalande de Pomerol 2018 Bordeaux, France • Cabernet Franc, Merlot	135
Tyler 2017 Santa Barbara, USA • Pinot Noir	140
R. Lopez de Heredia Vina Tondonia Reserva Rioja 2008 Rioja, Spain • Tempranillo, Garnacha, Mazuelo, Gracian	150

Felton Road Bannockburn 2019 Central Otago, New Zealand • Pinot Noir	160
Nittardi "Casanuova di Nittardi" Vigna Doghessa Chianti Classico DOCG 2016 Tuscany, Italy • Sangiovese	160
Salentein 2018 Uco Valley, Argentina • Malbec	160
Waits-Mast Mariah Vineyard 2015 Mendocino Ridge, USA • Pinot Noir	170
Cruse Wines Alder Springs Vineyard 2015 Sonoma, USA • Tannat	170
Paul Bara Coteaux Champenois Bouzy Rouge Grand Cru 2008 Champagne, France • Pinot Noir	180
Prunotto Barolo DOCG 2016 Piemonte, Italy • Nebbiolo	180
Tenuta di Collosorbo Brunello Di Montalcino 2014 Tuscany, Italy • Sangiovese	180
Domaine Alain Voge Cornas Les Chailles 2016 Rhône Valley, France • Syrah	180
The Drift Farm 'Gift Horse' 2017 Overberg, South Africa • Barbera	180
Tommasi Amarone della Valpolicella DOCG 2016 Veneto, Italy • Corvina, Rondinella	190
Château La Nerthe Châteauneuf du Pape 2016 Rhône Valley, France • Grenache, Syrah, Mourvèdre	200
Dehours & Fils "La Croix Joly" Coteaux Champenois Rouge 2012 Champagne, France • Pinot Noir	200
L'École No.41 Perigee Vineyard 2015 Walla Walla Valley, USA • Cabernet Sauvignon	210
L'École No.41 Ferguson Vineyard 2015 Walla Walla Valley, USA • Cabernet Sauvignon	215
Château Musar 2006 Bekaa Valley, Lebanon • Cabernet Sauvignon, Cinsault	220
Weingut Meyer-Näkel Neuenahrer Sonnenberg Spätburgunder GG 2011 Ahr, Germany • Pinot Noir	220
Château Musar 2007 Bekaa Valley, Lebanon • Cabernet Sauvignon, Cinsault	230
Lanson Côteaux Champenois Rouge Bouzy NV Champagne, France • Pinot Noir	230
Larmandier-Bernier Coteaux Champenois Vertus Rouge Premier Cru 2012 Champagne, France • Pinot Noir	230
Domaine François Bertheau Chambolle-Musigny 2014 Burgundy, France • Pinot Noir	240

WINES OF THE WORLD - RED

Marchesi Antinori Pian delle Vigne Brunello di Montalcino 2014 Tuscany, Italy • Sangiovese	240
Château Musar 2005 Bekaa Valley, Lebanon • Cabernet Sauvignon, Cinsault	250
Henschke Keyneton Euphonium, 2014 Eden Valley, Australia • Shiraz, Cabernet Sauvignon, Merlot, Cabernet Franc	250
Weingut Meyer-Näkel Neuenahrer Sonnenberg Spätburgunder GG 2007 Ahr, Germany • Pinot Noir	250
Domaine Grand Veneur Chateauneuf-du-Pape Vieilles Vignes 2011 Rhône Valley, France • Grenache, Syrah, Mourvèdre	250
Lake's Folly 2011 Hunter Valley, Australia • Cabernet Sauvignon	260
Bollinger Côteaux Champenois "La Côte aux Enfants" Aÿ Rouge 2013 Champagne, France • Pinot Noir	260
Giovanni Rosso "Cerretta" Barolo DOCG 2005 Piemonte, Italy • Nebbiolo	260
Domaine Arnoux-Lachaux 1er Cru "Clos des Corvées Pagets" Nuits-Saint-Georges 2012 Burgundy, France • Pinot Noir	310
Joseph Drouhin Les Procses Nuit-Saint-Georges Premier Cru 2016 Burgundy, France • Pinot Noir	380
Dal Forno Romano Valpolicella Superiore DOC 2012 Veneto, Italy • Corvina, Rondinella, Croatina, Oseleta	400
M. Chapoutier Ermitage Le Méal 2012 Rhône Valley • Syrah	450
Almaviva 2012 Maipo Valley, Chile • Cabernet Sauvignon, Carmenere	460
Almaviva 2013 Maipo Valley, Chile • Cabernet Sauvignon, Carmenere	460
Almaviva 2014 Maipo Valley, Chile • Cabernet Sauvignon, Carmenere	460
M. Chapoutier Ermitage Les Greffieux 2013 Rhône Valley • Syrah	520
M. Chapoutier Ermitage Le Pavillon 2006 Rhône Valley • Syrah	570
Ao Yun 2014 Yunnan, China • Cabernet Sauvignon	600
Opus One 2011 Napa Valley, USA • Cabernet Sauvignon	980

SWEET

Angerhof Tschida Auslese 2018 Burgenland, Austria • Chardonnay, Traminer, Sauvignon Blanc	16/80
Polvanera 2013 Puglia, Italy • Aliatico	80
Guy Charlemagne Ratafia de Champagne NV Champagne, France • Pinot Noir	230
Yves Cuilleron Condrieu Ayguets (500ml) 2006 Rhône Valley, France • Viognier	260
Château Coutet Barsac 2009 Bordeaux, France • Sauvignon Blanc, Semillon	350
Château d'Yquem Sauternes 1996 Bordeaux, France • Sauvignon Blanc, Semillon	950

FAMILY COLLECTION

Brought to Singapore from the family collection, a sampling representing the Parkview Family Cellar's genuine passion for fine wine. Objects of beauty that truly stand the test of time.

WHITE

Domaine des Comtes Lafon Meursault 2004 Burgundy, France • Chardonnay	4000
Domaine de la Vougeraie 1er Cru "Les Clos Blanc de Vougeot" Monopole Corton-Charlemagne 2005 Burgundy, France • Chardonnay	600
Domaine Henri Boillot Corton-Charlemagne Grand Cru 2012 Burgundy, France • Chardonnay	800
Domaine Henri Boillot Bâtard-Montrachet Grand Cru 2013 Burgundy, France • Chardonnay	1500
Vincent Girardin Chevalier-Montrachet 2008 Burgundy, France • Chardonnay	850
Jean-Noël Gagnard Bâtard-Montrachet Grand Cru 2013 Burgundy, France • Chardonnay	1000
Lucien Le Moine Bienvenues-Bâtard-Montrachet Grand Cru 2010 Burgundy, France • Chardonnay	1200
Lucien Le Moine Bâtard-Montrachet Grand Cru 2008 Burgundy, France • Chardonnay	1300
Château Haut-Brion Blanc Pessac-Léognan 1998 Bordeaux, France • Semillion, Sauvignon Blanc	1480
Château Haut-Brion Blanc Pessac-Léognan 1990 Bordeaux, France • Semillion, Sauvignon Blanc	1680
Château Haut-Brion Blanc Pessac-Léognan 1985 Bordeaux, France • Semillion, Sauvignon Blanc	2280

RED

Hospices de Nuits "Les Champs Chenys Cuvée Irène Noblet" Gevrey-Chambertin 2009 Burgundy, France • Pinot Noir	600
Domaine Armand Rousseau Pere et Fils Chambertin Grand Cru 2000 Burgundy, France • Pinot Noir	4800
Domaine Armand Rousseau Pere et Fils Chambertin Grand Cru 1999 Burgundy, France • Pinot Noir	5000
Geantet-Pansiot Charmes-Chambertin Grand Cru 2005 Burgundy, France • Pinot Noir	900
Domaine Joseph & Philippe Roty Charmes-Chambertin "Cuvée de Très Vieilles Vignes" Grand Cru 1997 Burgundy, France • Pinot Noir	1000
Philippe Pacalet Charmes-Chambertin Grand Cru 2005 Burgundy, France • Pinot Noir	1100
Nicolas Potel Clos de Vougeot Grand Cru 2005 Burgundy, France • Pinot Noir	1400
Domaine Jacques Prieur Musigny Grand Cru 2002 Burgundy, France • Pinot Noir	1000
Domaine de la Vougeraie Musigny Grand Cru 2003 Burgundy, France • Pinot Noir	2100
Domaine de la Vougeraie Musigny Grand Cru 2006 Burgundy, France • Pinot Noir	2200
Domaine de la Vougeraie Bonnes-Mares Grand Cru 2006 Burgundy, France • Pinot Noir	800
Domaine de la Vougeraie Bonnes-Mares Grand Cru 2005 Burgundy, France • Pinot Noir	800
Domaine de la Vougeraie Bonnes-Mares Grand Cru 2000 Burgundy, France • Pinot Noir	1000
Domaine Pierre Amiot et Fils Clos de la Roche Grand Cru 1979 Burgundy, France • Pinot Noir	1400
Lucie et Auguste Lignier Clos de la Roche Grand Cru 2001 Burgundy, France • Pinot Noir	1400
Château Mouton Rothschild, Pauillac 1974 Bordeaux, France • Cabernet Sauvignon, Merlot	3000
Château Mouton Rothschild, Pauillac 1982 Bordeaux, France • Cabernet Sauvignon, Merlot	7000
Château Lafite Rothschild, Pauillac 2005 Bordeaux, France • Cabernet Sauvignon, Merlot	3000
Château Lafite Rothschild, Pauillac 1989 Bordeaux, France • Cabernet Sauvignon, Merlot	6000

WINES OF THE WORLD - FAMILY COLLECTION . RED

Château Lafite Rothschild, Pauillac 1982 Bordeaux, France • Cabernet Sauvignon, Merlot	8000
Château Margaux 1982 Bordeaux, France • Cabernet Sauvignon, Merlot	6000
Château Palmer, Margaux 1961 Bordeaux, France • Cabernet Sauvignon, Merlot	9000
Château Haut-Brion, Pessac-Léognan 1964 Bordeaux, France • Cabernet Sauvignon, Merlot	2500
Château Haut-Brion, Pessac-Léognan 1975 Bordeaux, France • Cabernet Sauvignon, Merlot	2500
Château Haut-Brion, Pessac-Léognan 1982 Bordeaux, France • Cabernet Sauvignon, Merlot	6000
Château Pétrus, Pomerol 1983 Bordeaux, France • Merlot	3500
Château Pétrus, Pomerol 1992 Bordeaux, France • Merlot	3500
Château Pétrus, Pomerol 2004 Bordeaux, France • Merlot	5000
Château Pétrus, Pomerol 1975 Bordeaux, France • Merlot	5150
Château Pétrus, Pomerol 1989 Bordeaux, France • Merlot	9800
Château Cheval Blanc Saint-Émilion Grand Cru 1982 Bordeaux, France • Cabernet Franc, Merlot	2300
Château Cheval Blanc Saint-Émilion Grand Cru 1990 Bordeaux, France • Cabernet Franc, Merlot	2700

