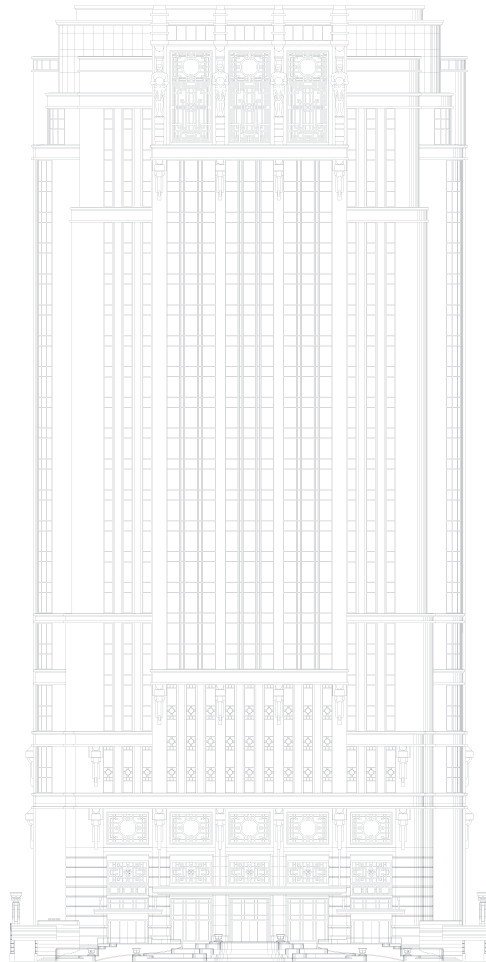


ATLAS

THE ATLAS COLLECTIONS

VOLUME 1





Dear Guests,

Welcome to ATLAS - a labour of love that honours my grandfather, CS Hwang, the late founder of Parkview Group, and the beautiful space he created in which ATLAS resides. It is our hope that your experience at ATLAS reflects the passion and attention that has gone into every aspect of its creation. A grand and beautiful space, we invite you to unwind, enjoy, celebrate and indulge as our talented and dedicated ATLAS team makes you feel most welcome and at home.

The ATLAS Collections feature two of the world's most remarkable physical collections of Gin and Champagne. Building the ATLAS Collections was a monumental task which took over two years to curate and assemble. We are also delighted to feature a selection of rare and exceptional still wines and whiskies from my own family's private cellar, which for the first time since its inception almost 40 years ago, has been opened especially for our guests at ATLAS.

Building upon the modest collection of wines started by my grandfather, the Parkview Family Cellar found a permanent home in 1989 with the opening of the Parkview Group's flagship property, Hong Kong Parkview. Initially consisting of a small collection of 50 bottles of right bank Bordeaux wines, the collection grew steadily under the stewardship of my uncle, George Wong, and his son Alex.

By 2000, the collection was at 3,000 bottles and has now expanded beyond the right bank to other regions in France and the rest of the world. Currently, the collection stands at 50,000 bottles of fine wine and over 10,000 bottles of whiskey acquired through reputable merchants, auctions, and numerous trips to the wineries and distilleries where suppliers have now become close friends, ensuring that the family always has access to the finest and rarest bottles.

For those who share our genuine passion for fine wines and spirits, a small but special sampling of the bottles from the Parkview Family Cellar have been brought to ATLAS for you to enjoy. We hope that you are able to try things here that you would otherwise not find; and that you will enjoy our treasures as much as we have enjoyed collecting them and sharing them with you.

Warmest regards,

Vicky Hwang

CONTENTS

THE ATLAS GIN COLLECTION

Argentina
Australia
Austria
Belgium
Brazil
Cambodia
Canada
China
Colombia
Czech Republic
Denmark
England
Estonia
Finland
France
Germany
Iceland
India
Ireland
Italy
Japan
Luxembourg
Mexico
Moldova
Netherlands
New Zealand
Norway
Peru
Philippines
Portugal
Romania
Russia
Scotland
Singapore
South Africa
Spain
Sri Lanka
Sweden
Switzerland
Taiwan

Thailand
United States of America
Wales
Rare Collectibles

FINE SPIRITS OF THE WORLD

Whisk(e)y
Brandy
Sugarcane
Agave
Vodka
Absinthe
Vermouth
Aperitif
Digestif
Liqueur

THE ATLAS CHAMPAGNE COLLECTION

La Sélection
Le Terroir
La Prestige
Les Collections

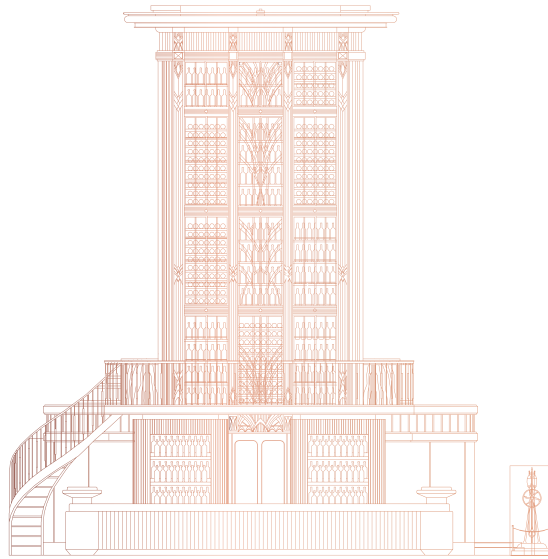
WHITE WINES OF THE WORLD

RED WINES OF THE WORLD

SWEET WINES OF THE WORLD

The □ symbol denotes special bottles from the Family Collection.

THE ATLAS GIN COLLECTION



Gin; a clear alcoholic spirit distilled from grain and flavoured with juniper berries (and other botanicals). The name is derived from the French genièvre or the Dutch jenever, which both mean juniper.

Juniper; an evergreen, dioecious shrub that grows all throughout the Northern Hemisphere. It produces a long ripening berry that when dried can impart a piney, citrusy, floral aroma and flavour.



Welcome to the ATLAS Gin Collection; a labour of love that has involved collecting, carefully curating and cataloguing the entire world of gin. Our aspiration is to introduce our guests to the beauty and wonder of this incredible spirit.

Gin is liquid history. From the tombs of ancient Egypt, the monasteries of the Middle Ages, the laneways of the Industrial Revolution, through Prohibition and to the current Second Golden Age of fine drinking, gin has been drunk by all classes and in all corners of the globe. For over two millennia juniper berries have been used for ritual, medicinal and gastronomic purposes. For almost 1,000 years, this unique botanical has been used in fine beverages, namely gin.

Gin is provenance; it looks to the natural world for flavour, aroma and sensation. Gin is the quintessential cocktail ingredient, and since the turn of the twentieth century has been a bartender's favourite cocktail spirit. It is a beacon for sophistication and style, yet is founded upon mayhem and grit. Gin is a delicious spirit; it runs the gamut of fresh, vibrant and zesty, to floral, soft and delicate. It can be robust and bracing, it can be savoury and spiced.

Here at ATLAS, we are delighted to share one of the world's finest collections of gin with you. We have arranged our gins by country of origin, but therein lies numerous styles, botanicals and expressions of the juniper spirit. Our passionate and dedicated gin team stands ready to assist you in your gin journey.

Jason Williams, *Master of Gin*

Jonathan 'Bravo' Teo, *Gin Researcher*

Jesse Vida, *Head Bartender*

The ATLAS Gin Collection

Argentina (1)	Netherlands (74)
Australia (82)	New Zealand (16)
Austria (6)	Norway (4)
Belgium (52)	Peru (2)
Brazil (2)	Portugal (11)
Canada (32)	Romania (1)
Colombia (2)	Russia (1)
Czech Republic (5)	Scotland (64)
Denmark (2)	Slovakia (1)
England (318)	South Africa (29)
Estonia (2)	Spain (67)
Finland (7)	Sri Lanka (1)
France (24)	Sweden (14)
Germany (50)	Switzerland (11)
Iceland (1)	Thailand (4)
India (2)	United States of America (123)
Ireland (16)	Wales (10)
Italy (27)	Rare & Collectible (36)
Japan (7)	
Luxembourg (2)	
Mexico (2)	
Moldova (1)	

THE 'GIN RATION' DECREE

The ATLAS Gin Collection is a rare and special treasure, designed to be enjoyed by all. As such, we must insist on a Gin Ration, just like the old days in the Royal Navy in the United Kingdom. For the special gins in our collection – those where only one or two bottles have been carried from afar - guests are allowed just one pour of each gin per visit to ATLAS.

If you love gin as much as we do, or would like to taste even more of the rare gins that arrive at ATLAS, please ask about becoming a member of our Juniper Society.

◊ denotes gins that are subject to the Gin Ration.

ARGENTINA (1)

◇ Principe De Los Apostoles Mate Gin	40%	28
--------------------------------------	-----	----

AUSTRALIA (95)

◇ 313 Dry Gin	40%	24
◇ 313 Dry Wattleseed Gin	40%	24
◇ 36 S Blood Orange Gin	45%	34
◇ 78 Degrees Gin	42%	32
◇ Animus Ambrosian Gin	50%	38
◇ Animus Arboretum Gin	50%	40
◇ Animus Classic Dry Gin	50%	36
◇ Antipodes Gin	45%	32
◇ Applewood Distillery Gin	43%	32
◇ Archie Rose ATLAS Tailored Orange Gin	42%	24
◇ Archie Rose Distillers Strength Gin	52.4%	30
◇ Archie Rose Horisumi Autumn Gin	44%	30
◇ Archie Rose Horisumi Summer Gin	44%	30
◇ Archie Rose Horisumi Winter Gin	44%	30
◇ Archie Rose Signature Dry Gin	42%	26
◇ Archie Rose Summer Gin Project Bush Gin	40%	32
◇ Archie Rose Summer Gin Project Coast Gin	40%	32
◇ Artemis Gin	44%	28
◇ Australian Green Ant Gin	42%	36
◇ Bass & Flinders Angry Ant Gin	40%	46
◇ Bass & Flinders Gin 10 Wild and Spicy Gin	40%	34
◇ Bass & Flinders Monsoon Gin	40%	34
◇ Bass & Flinders Soft and Smooth Gin	40%	36
◇ Blind Tiger Organic Gin	42.7%	30
◇ Botanic Australis Gin	40%	26
◇ Botanic Australis Navy Strength Gin	57%	28
◇ Brookies Byron Dry Gin	45%	32
◇ Distillery Botanica Gin	42%	34
◇ Forty Spotted Rare Tasmanian Gin	40%	28
◇ Forty Spotted Rare Tasmanian Winter Edition Gin	40%	30
◇ Four Pillars & The Swillhouse Group "Underground Sydney" Gin	41.8%	26
◇ Four Pillars Barrel Aged Gin	43.8%	28
◇ Four Pillars Bloody Shiraz Gin	37.8%	24
◇ Four Pillars Chardonnay Barrel Gin	43.8%	30
◇ Four Pillars Christmas Gin	43.8%	24
◇ Four Pillars Cousin Vera Gin	42.8%	24

◇ Four Pillars Modern Australian Gin	45%	24
Four Pillars Navy Strength Gin	58.8%	26
Four Pillars Rare Dry Gin	41.8%	22
Four Pillars Sherry Cask Gin	43.8%	30

Four Pillars Sherry Cask Gin

Aged for one year in Sherry and Apera (Australian fortified wine) barrels, Four Pillars Sherry Cask Gin is a rich and intense barrel-aged gin. At the end of the aging process, Spanish Amontillado sherry is added for an extra depth of flavour and sweetness. With aromas of clove and star anise and flavours of dried fruit and nuts, this gin is perfect sipped neat, over ice or in a Tuxedo cocktail.

Four Pillars Spiced Negroni Gin	43.8%	24
◇ Four Pillars X Herno Gin	42.8%	26
Giniversity Botanical Gin	42%	24
Giniversity London Dry Gin	40%	22
◇ Great Southern Dry Gin	40%	24
◇ Great Southern Ginnifer Gin	49%	22
◇ Gunnery Australian Spiced Gin	40%	28
◇ Hippocampus Gin	41.5%	22
◇ Hobart No.4 Batch Distilled Gin	44%	38
◇ Hurdle Creek Still Aniseed Gin	42%	28
◇ Hurdle Creek Still Yardarm Gin	42%	28
Ink Gin	43%	24
◇ Japhet White Gin	46%	34
◇ Kalki Moon Gin	42.0%	28
◇ Kis O Gin	43.5%	34
◇ Kis Whisky Barrel Gin	42.7%	40
◇ Knocklofty Penn Gin	40%	34
Lark Tasmanian Pepperberry Gin	40%	20
Lawrenny 1818 Settlers Gin	52.5%	26
Lawrenny Van Diemen's Gin	42.5%	24
◇ Loch Distillery Small Batch Gin	41%	22
◇ Loch Distillery The Weaver Gin	50%	24
◇ Manly Spirits Australian Dry Gin	40%	22
◇ McHenry Barrel Aged Gin	40%	26
◇ McHenry Classic Dry Gin	40%	24
Melbourne Gin Company Dry Gin	42%	20
◇ Moore's Australian Dry Gin	40%	22
Never Never Juniper Freak Gin	58%	28
Never Never Southern Strength Gin	52%	26
Never Never Triple Juniper Gin	43%	20
Old Young's 1829 Gin	45%	24

	Old Young's Common Gin	57.5%	24
◇	Old Young's Old B.A.G Gin	42%	32
	Old Young's Six Seasons Gin	50%	26
◇	Oxford Scholar Gin	40%	34
◇	Patient Wolf Premium Dry Gin	41.5%	35
◇	Poltergeist True Spirit Gin	46%	24
◇	Poltergeist Unfiltered Gin	46%	24
	Poor Toms Fool's Strength Gin	52%	22
	Poor Toms Sydney Dry Gin	41.3%	20
◇	Prohibition Bathtub Cut Gin	69%	28
◇	Prohibition Gin	42%	24
◇	Rokeby's Half Crown London Dry Gin	40.6%	22
◇	Settler's Rare Dry Gin	43%	22
	Sons of Tippling	42%	22
◇	Stone Pine Distillery Black Truffle Gin	40.0%	28
◇	Stone Pine Distillery Original Dry Gin	40%	22
◇	Stone Pine Orange Blossom Gin	40%	34
◇	Sud Polaire Expedition Strength Gin	57%	28
◇	Sud Polaire Rare Oak Gin	42%	30
◇	Tamborine Mountain Distillery Lilly Pilly Gin	40%	24
◇	Twenty Third St. Distillery Signature Gin	40%	22
◇	West Winds Barrel Expedition Gin	45%	28
◇	West Winds Broadside Gin	58%	30
◇	West Winds Captain's Cut Gin	63%	30
	West Winds Cutlass Gin	50%	22
	West Winds Sabre Gin	40%	22
◇	Wild Wombat Gin	42%	22

AUSTRIA (6)



◇	Aeijst Gin	43.5%	42
	Farthofer Organic Premium Gin	40%	24
◇	J.A. Baczewski Dry Gin	43.5%	22
	Leopold Organic Sloe Gin	27%	22
◇	Prinz Wacholderschnaps Gin	40%	22
◇	Reisetbauer Blue Gin	43%	26

BELGIUM (51)



◇	1836 Gin	43%	24
◇	Belegen Jenever Stokerij Wissels	38%	22
◇	Biercée Less is More Gin	44%	24

◇ Biercée Thesis & Antithesis Gin	44%	24
Blind Tiger Handcrafted Gin Imperial Secrets	45%	24
Blind Tiger Handcrafted Gin Piper Cubeba	47%	24
◇ Buss No.509 Elderflower Gin	40%	28
◇ Buss No.509 Persian Peach Gin	40%	28
◇ Buss No.509 Pink Grapefruit Gin	40%	28
◇ Buss No.509 Rebel Cut Gin	47%	28
◇ Buss No.509 White Rain Gin	50%	30
◇ Butcher's Gin	43%	22
◇ Clover Gin	40%	32
◇ Cockney's Gin	44.2%	28
Copperhead Gin	40%	24
◇ Crazy Monday Gin	48%	42
◇ Duin Gin	43%	22
◇ Filliers 1997 Vintage Grain Genever	43%	32
◇ Filliers Barrel Aged Dry Gin 28	43%	32
◇ Filliers Classic Dry Gin 28	46%	32
◇ Filliers Dry Gin 28 Tangerine Seasonal Edition	43.7%	36
◇ Filliers Pine Blossom Dry Gin 28	43.7%	36
◇ Filliers' 15 Year Old Oude Graanjenever	38.6%	30
◇ Filliers' 38% (5 Year Old) Oude Graanjenever	38%	36
Forest Dry Autumn Gin	42%	26
Forest Dry Spring Gin	42%	26
Forest Dry Summer Gin	42%	26
Forest Dry Winter Gin	42%	26
◇ Gillemore Magical Gin	46%	38
◇ Gilliam's Premium Gin	41%	32
◇ Gin De Binche	40%	34
◇ GinGer by Duin Gin	50%	36
◇ Ginlus by Duin Gin	50%	34
◇ Holy Water Cuberdon Gin	40%	22
◇ Holy Water Mustard Gin	40%	22
◇ Huisjenever & Dreupelkot Korenwijn Ge-distilleerd - Spiritueux Genever	38%	24
◇ Jenever Van Dreupelkot Belegen Genever	38%	24
◇ Lindemans Premium Distilled Gin	40%	34
◇ Lindemans Premium Distilled Gin (with a hint of sour cherry)	40%	34
◇ Meyer's M1 Gin	38%	22
◇ Meyer's M2 Gin	43%	28
◇ Mont-Saint-Jean Waterloo Gin	42%	30
◇ Musa Lova Gin	41%	22
◇ Og'ir Gin	40%	22
◇ Ph. Collet's London Dry Gin	46%	32
◇ Poppies Gin	40%	28
◇ Spring Gentleman's Cut Gin	48.8%	50
◇ Spring Ladies Edition Gin	38.3%	40
◇ Spring Mediterranee Gin	40.5%	40

◇ Spring Original Gin	43.8%	32
◇ UpperCut Dry Gin	49.6%	34
◇ Xolato X-Gin	46%	38

BRAZIL (2)



Amazzoni Gin	42%	21
◇ Yvy Gin	46%	24

CAMBODIA (1)



◇ Seekers Mekong Dry Gin	41.3%	20
--------------------------	-------	----

CANADA (32)



◇ Ampersand Distilling Co. Gin	43.8%	26
◇ Dillon's Unfiltered Gin	40%	22
◇ Dixon's VirGin Gin	40%	22
◇ Dixon's Wicked Gin	40%	22
◇ Doctor's Orders Gin	40%	26
◇ Endeavour Old Tom Gin	45%	26
◇ Endeavour Origins Gin	45%	26
◇ Endeavour Pink Gin	47%	26
◇ Endeavour Small Batch Gin	45%	26
◇ Iceberg Gin	40%	22
◇ Kootenay Country Gin	40%	26
◇ Long Table London Dry Gin	44%	24
◇ Noteworthy New Western Dry Gin	43%	24
◇ Okanagan Spirits Family Reserve Gin	40%	24
◇ Okanagan Spirits Gin	40%	24
◇ Old Blood Gin	40%	26
◇ Old Order Legacy Gin	40%	24
◇ Paul's Tomb Gin	40%	24
◇ Queensborough Dry Gin	43%	24
◇ Seraph Gin	40%	24
◇ Sheringham Vancouver Island Seaside Gin	43%	24
◇ Sin Gin	43%	26
◇ Spirit Bear Gin	43.1%	24
◇ St. Laurent Gin	43%	34
◇ Stump Coastal Forest Gin	42%	24
◇ Tempo Renovo Dry Gin	40%	22

◇ Terminal City Gin	42%	24
◇ The Empiric Gin	40%	24
◇ Ungava Gin	43.1%	24
◇ Unruly Gin	43%	25
◇ Wallflower Gin	44%	24
◇ Wallflower Oaken Gin	44%	28

CHINA (2)



◇ Crimson Pangolin Chinese Botanical Craft Gin	40%	22
◇ Peddlers Shanghai Craft Gin	45.7%	20

COLOMBIA (2)



Dictador Orthodoxy Gin	43%	22
Dictador Treasure Gin	43%	24

CZECH REPUBLIC (5)



◇ Buggy's DNA Gin	45%	38
◇ Koniferum Borovicka Gin	37.5%	22
Zufanek Borovicka Gin	45%	20
◇ Zufanek Le Gin Occulte Gin	45%	32
Zufanek Oh My Gin	45%	22

DENMARK (2)



◇ Anty Gin	42%	98
◇ Isfjord Gin	44%	28

ENGLAND (336)



◇ 1606 Gin	43%	28
◇ 1897 Quinine Gin	45.8%	27
◇ 6 O'Clock Gin	43%	24

7 Dials London Dry Gin	46%	24
◇ 7D Gin	40%	22
◇ Ableforth's Bathtub Gin	43.3%	26
◇ Ableforth's Bathtub Navy Strength Gin	57%	30
Ableforth's Bathtub Old Tom Gin	42.4%	24
◇ Ableforth's Sloe Gin	33.8%	24
◇ Adnam's Copper House Dry Gin	40%	22
◇ Adnam's First Rate Copper Gin	48%	24
◇ Adnam's Rising Sun Gin	42%	24
◇ Ampersand Gin	40%	22
◇ Ancient Mariner London Cut Dry Gin	50%	30
◇ Anno 60 ² Gin	60%	32
◇ Anno Kent Dry Gin	43%	24
Apoteca	43.0%	28
Bankes Gin	43%	18
◇ Batch Premium Gin	40%	34
◇ Bath Gin	40%	24
◇ Bayswater Gin	43%	33
◇ Beckett's London Dry Gin	40%	26
◇ Beckett's Sloe Gin	29%	22
◇ Bedrock Gin	40%	28
Beefeater 24 Gin	45%	20
◇ Beefeater Burrough's Reserve Oak Rested Gin	43%	32
Beefeater London Dry Gin	40%	18
◇ Berkeley Square Gin	46%	22
◇ Bimber London Dry Gin	42%	24
◇ Bishop's Gin	40.7%	24
◇ Blackdown Sussex Dry Gin	37%	28
Bloom London Dry Gin	40%	22
◇ Bloomsbury Lemon Gin	45%	24
◇ Blue Bottle Artisan Dry Gin	47%	28
◇ Bogart's Gin	45%	26
◇ Bombay Laverstoke Mill Limited Edition	49%	78
Bombay Original Dry Gin	37.5%	20
Bombay Sapphire	40%	18
Bombay Sapphire East Gin	42%	22
Bombay Star of Bombay Gin	47.5%	24
◇ Boodle's British Gin	40%	20
◇ Bosford Rose Gin	37.5%	20
◇ Both's Old Tom Gin	47%	26
Boxer Gin	40%	22
◇ Brennen & Brown Colonial Gin	43%	26
◇ Brighton Gin	40%	25
◇ British Polo Gin No.3	42.7%	28
◇ Brockmans Premium Gin	40%	26
Broker's Gin 40%	40%	20

Broker's Gin	47%	22
◇ Bruni Collins Gin	42.8%	24
◇ Bullards Norwich Dry Gin	42.5%	26
◇ Bulldog Bold Gin	47%	24
Bulldog Gin	40%	20

Bulldog Gin

A blend of 12 botanicals sourced from all over the globe go into this London dry gin. Non-traditional ingredients such as white poppy (Turkey), lotus leaves (China), and dragon eye, also known as Longan, give the gin its complex flavour profile. This quadruple-distilled gin has notes of lavender, citrus and cinnamon that leaves a warm and delicate floral finish on the palate. Enjoy it with Mediterranean Tonic and rosemary for garnish.

Burleighs Distiller's Cut Gin	47%	24
Burleighs Export Strength Gin	47%	24
◇ Burleighs Leicester Dry Gin	40%	28
Burleighs London Dry Gin	40%	22
Burleighs Pink London Dry Gin	40%	22
◇ Cambridge Dry Gin	42%	26
◇ Cambridge Truffle Gin	42%	38
◇ Capreolus Garden Tiger Dry Gin	47%	32
◇ Caspyn Cornish Dry Gin	40%	24
◇ Caspyn Midsummer Dry Gin	40%	24
◇ Chase Oak Aged Sloe Mulberry Gin	29%	26
Chase Williams Elegant Gin	48%	22
Chase Williams Extra Dry Gin	40%	22
◇ Chase Williams Seville Orange Gin	40%	26
◇ Chase Williams Single Botanical Gin	40%	26
◇ Chase Williams Sloe Mulberry Gin	40%	26
◇ Chilgrove Dry Gin	44%	24
◇ City of London Christopher Wren Gin No.2	45.3%	28
◇ City of London Dry Gin	41.3%	24
◇ City of London Old Tom Gin	43.3%	26
◇ City of London Sloe Gin	28%	26
◇ City of London Square Mile Gin	47.3%	28
◇ CollaGin	40%	36
◇ Conker Spirits Dorset Dry Gin	40%	28
Cotswolds Gin	46%	20
◇ Crazy Gin	41%	32
◇ Cremorne Colonel Fox's London Distilled Dry Gin	40%	22
◇ Cremorne Gentleman Badger's Wild Blackthorne Sloe Gin	26%	22
◇ Curio Rock Samphire Gin	41%	26

◇ D1 London Gin	40%	32
◇ Dancing Cows Lymington Gin	43%	26
◇ Dancing Cows New Forest Oak-Aged Gin	43%	28
Dodd's Gin	49.9%	24
Dodd's Kew Gin	46%	26
Dodd's Old Tom Limited Edition Gin	46%	28
◇ Dr. J's Gin	45%	28
◇ Durham Gin	40%	22
◇ East London Liquor Company Barrel-aged Ex-Bourbon Cask Gin	41%	30
◇ East London Liquor Company Barrel-aged New & Old Oak Gin	52%	26
◇ East London Liquor Company Dry Gin	40%	22
East London Liquor Company Premium Batch No.1 Gin	45%	26
◇ East London Liquor Company Premium Batch No.2 Gin	47%	26
Edgerton Blue Spice Gin	43%	20
Edgerton Original Pink Gin	43%	20
◇ Elemental Cornish Gin	42%	26
◇ Faith & Sons Gin	42.2%	32
◇ Fifty Eight Gin	43%	26
Fifty Pounds Gin	43.5%	24
◇ Finsbury Platinum Gin	47%	24
Fishers Gin	44%	26
Fords Gin	45%	16
◇ Forest (Bond) Gin	42%	32
◇ Foxdenton Estate London Dry Gin	48%	26
◇ Foxdenton Estate Sloe Gin	27%	22
◇ Frog's Lip Gin	47%	25
◇ Gilpin's Westmorland Extra Dry Gin	47%	28
◇ Gin Lane 1751 London Dry Gin	40%	22
◇ Gin Lane 1751 Old Tom Gin	40%	22
◇ Gin Lane 1751 Royal Strength Gin	47%	24
◇ Gin Lane 1751 Victoria Pink Gin	40%	22
◇ Ginger Ninja Gingery Gin	42%	26
◇ Glendalough Wild Botanical Gin	41%	24
◇ GOA Gin	47%	26
Gordon's Crisp Cucumber Gin	37.5%	20
Gordon's London Dry Gin	38%	18
◇ Gordon's Sloe Gin	26%	20
◇ Gordon's Traveler's Edition	47.3%	22
◇ Green House Artisan Gin	40%	22
◇ Greenall's London Dry Gin	37.5%	22
◇ Greenhook Ginsmiths Old Tom Gin	37.5%	26
◇ Greensand Ridge London Dry Gin	40%	26
◇ Gunroom Aged In Whiskey Casks Gin	43%	36
Gunroom Navy Gin	57%	28
Half Hitch Gin	40%	26
◇ Hammer & Son Geranium Gin	44%	22

◇ Hammer & Son Old English Batch No.2 Gin	44%	28
◇ Hampshire Fine Dry Gin	40%	26
◇ Hampshire Navy Strength Gunpowder Gin	57%	30
◇ Haswell London Dry Gin	47%	24
Hawthorn's London Dry Gin	41%	22
Hayman's 1820 Gin Liqueur	40%	24
◇ Hayman's 1850 Reserve Gin	40%	22
◇ Hayman's English Cordial Gin	42%	26
Hayman's Family Reserve Gin	41.3%	22
Hayman's London Dry Gin	40%	18
Hayman's Old Tom Gin	40%	20
Hayman's Royal Dock Gin	57%	26
Hayman's Sloe Gin	26%	20
◇ Hedgerow Gin	42%	26
◇ Hepple Gin	45%	26
◇ Hexham Premier Cru Gin	40%	24
◇ Hidden Curiosities Gin	42%	30
◇ Hoos Lapsang Gin	44.4%	22
◇ Hoos London Gin	44.4%	22
◇ Hoos Reserve Gin	44.4%	22
◇ Hoxton Gin	40%	30
◇ Hunters Gin	43.3%	22
◇ Indian Summer Saffron Infused Gin	46%	24
◇ Ish Gin	41%	24
◇ Ish Limao Gin	40%	24
◇ Japanese Gin	42%	32
◇ Jensen Bermondsey Gin	43%	22
◇ Jensen Old Tom Gin	43%	22
◇ JJ Whitley London Dry Gin	38.6%	20
◇ Judges London Dry Gin	40%	18
◇ Juniper Green Organic Gin	37.5%	22
◇ Juniper Green Trophy Gin	43%	22
◇ Keepr's Honey Gin	40%	24
◇ Kew Organic Explorers' Strength Gin	57.3%	28
◇ King of Soho Gin	42%	22
◇ Knockeen Hills Heather Gin	47.3%	24
Kokoro Gin	42%	26
◇ KURO Gin	43%	26
◇ Langley's Distilled London Dry Gin	41.7%	22
◇ Langtons No 1 Gin	40%	22
◇ Leeds Gin	40%	24
◇ Lilliput Dorset Gin	40%	28
◇ Little Bird London Dry Gin	41.6%	22
Liverpool Complex Organic Gin	43%	28
◇ Liverpool Small Batch Gin	43%	26
◇ Liverpool Small Batch Valencian Orange Gin	46%	26

◇ London Hill Dry Gin	40%	20
◇ Lord Astor London Dry Gin	42%	18
◇ Lyme Bay Winery Reserve Liqueur Sloe Gin	26%	22
◇ Maiden Arwen's Flower Gin	42%	24
◇ Maiden Maidstone Gin	42%	24
◇ Manchester Gin	42%	24
◇ Manchester Three Rivers Gin	40%	22
◇ Marks & Spencer London Distilled Dry Gin	41.6%	22
◇ Martin Miller's 9 Moons Gin	40%	30
Martin Miller's Gin	40%	22
Martin Miller's Westbourne Strength Gin	45.2%	24
◇ Mary Le Bone London Dry Gin	50.2%	32
◇ Masons Dry Yorkshire Gin	42%	22
◇ Masons Dry Yorkshire Lavender Edition Gin	42%	24
◇ Masons Dry Yorkshire Tea Edition Gin	42%	24
◇ Mayfair Dry Gin	40%	23
◇ Mayfield Gin	40%	24
◇ Mermaids Gin	42%	26
◇ MEWS Gin	38%	22
Minus 33 Juniper Spirit	33%	22
Mombasa Club Colonel Reserve Gin	43.5%	26
Mombasa Club Gin	41.5%	20
◇ Nelson's Gin	42.5%	26
◇ Newton House Gin	43.2%	26
No. 3 London Dry Gin	46%	24
◇ Old Bakery Gin	41.7%	28
Old Raj Blue Gin	55%	24
Old Raj Red Gin	46%	22
◇ One Gin	43%	26
◇ Opihr Oriental Spiced Gin	40%	22
◇ ORIGIN Arezzo - Italy Gin	46%	24
◇ ORIGIN Caprese Michelangelo - Italy Gin	46%	24
◇ ORIGIN Istog - Kosovo Gin	46%	24
◇ ORIGIN Klanac - Croatia Gin	46%	24
◇ ORIGIN Meppel - Netherlands Gin	46%	24
◇ ORIGIN Skopje - Macedonia Gin	46%	24
◇ ORIGIN Valbone - Albania Gin	46%	24
◇ Oxley Gin	47%	26
◇ Palmer's 44 London Dry Gin	44%	22
◇ Peaky Blinder Spiced Dry Gin	40%	24
◇ Pink 47 Gin	47%	22
Plymouth Gin	41.2%	20
Plymouth Navy Strength Gin	57%	24
◇ Plymouth Vintage Gin	41.2%	26
◇ Plymouth Sloe Gin	26%	20
◇ Poetic License Northern Dry Gin	43.2%	24

◇ Poetic License Old Tom Gin	41.6%	24
◇ Portobello Road 171 Pepper Spray Gin	42%	22
◇ Portobello Road No.171 London Dry Gin	42%	22
◇ Potheary Gin	44.8%	26
◇ Potheary Sicilian Blend Gin	47%	34
◇ Potheary Thai Blend Gin	46%	40
◇ Prudence Rose Gin	20%	19
◇ Rathbone New London Dry Gin	40%	22
◇ Renegade Gin	42%	24
◇ Revolution Gin	42%	22
◇ Sabatini Gin	41.3%	24
◇ Sacred Cardamom Gin	43.8%	24
◇ Sacred Christmas Pudding Gin	43.8%	24
◇ Sacred Coriander Gin	40%	24
◇ Sacred Gin	43.8%	22
◇ Sacred Juniper Gin	40%	24
◇ Sacred Licorice Gin	43.8%	24
◇ Salcombe First Bottling Limited Edition Gin	44%	36
◇ Salcombe Start Point Gin	44%	26
◇ Sheep's Eye Gin	42%	24
◇ Sibling Triple Distilled Gin	42%	26
◇ Silent Pool Gin	43%	24
◇ Silverback Mountain Strength Gin	46%	26
◇ Sipsmith Lemon Drizzle Gin	40.4%	28
◇ Sipsmith London Dry Gin	41.6%	22
◇ Sipsmith Sloe Gin	29%	22
◇ Sipsmith VJOP Gin	57.7%	26
◇ Sir Robin of Locksley Gin	40.5%	24
◇ Slingsby Gin	42%	26
◇ Spitfire Heritage Gin	40%	27
◇ St. Giles Gin	42%	30
◇ Stafford's Gin	42%	26
◇ Steampunk Pirate Rascal Strength Gin	45%	38
◇ Stovell's Handcrafted Gin	42%	26
◇ Stratford Gin	45%	35
◇ SW4 London Dry Gin	40%	22
◇ Swordsman London Dry Gin	40%	22
◇ T.E.A Earl Grey Gin	42%	24
◇ T.E.A Jasmine Gin	42%	24
◇ Tanqueray Bloomsbury Gin	47.3%	26
◇ Tanqueray Flor de Sevilla Gin	41.2%	28
◇ Tanqueray Gin	43.1%	18
◇ Tanqueray Lovage Gin	47%	24
◇ Tanqueray Malacca Gin	40%	38
◇ Tanqueray No. TEN Gin	47.3%	24
◇ Tanqueray Old Tom Gin	47.3%	26

	Tanqueray Rangpur Gin	41.3%	22
◇	Tappers Darkside Gin	39.6%	38
◇	Tarquin's Navy Strength Limited Edition Gin	57%	28
◇	Tarquin's The Tonquin Dry Gin	42%	24
◇	Tarquins Handcrafted Cornish Gin	42.7%	24
◇	Ten Tor Seasonal Gin	42%	28
◇	That Boutique Botanical Democracy Gin	46.2%	34
◇	That Boutique Cherry Gin	42.6%	28
◇	That Boutique D.C. Gin	40%	32
◇	That Boutique Double-Barrelled Gin	46%	36
◇	That Boutique Expeditionary Golden Moon Gin	44.5%	32
◇	That Boutique Miyagawa Citrus Gin	46%	32
◇	That Boutique Monastic Gin	40%	28
◇	That Boutique Moonshot Gin	46.6%	34
◇	That Boutique Single Cask Bathtub Gin	43.3%	28
◇	That Boutique Spit-Roasted Pineapple Gin	40.1%	28
◇	That Boutique Very Old Tom	46.1%	28
◇	That Boutique World Gin Day Gin	47.7%	34
◇	The Braemle Gin Liqueur	24%	22
◇	The Corinthian London Dry Gin	40%	22
◇	The Distillery Celebrated Butter Gin	44%	32
◇	The Distillery King Theodore of Corsica Gin	42%	32
◇	The Distillery Navy Strength Gin	57.3%	36
◇	The Distillery Old Tom Gin	47%	32
◇	The Distillery Super Dry Gin	42%	32
◇	The East India Company London Dry Gin	42%	26
◇	The Harbinger Navy Strength Gin	57%	32
◇	The Lakes Explorer Edition Gin	47.1%	26
◇	The Lakes Gin	43.7%	22
	The London No.1 Original Blue Gin	47%	26
◇	The Original Barber's Gin	40%	24
◇	The Spectator Gin	42.4%	22
◇	The Sting London Dry Gin	40%	24
◇	The Sweet Potato Spirit Co. London Dry Gin	45%	36
◇	The Tottering Sharpener Gin	45%	22
◇	The Wrecking Coast Cornish Clotted Cream Gin	44%	25
◇	Thomas Dakin Gin	42%	22
◇	Tiger Premium Gin	40%	25
◇	Toujours 21 Gin	42%	30
◇	Trevethan Cornish Gin	43%	28
◇	True North Sheffield Dry Gin	42%	24
◇	Twisted Nose Winchester Dry Gin	52%	36
◇	Twisting Spirits Douglas-Fir Gin	41.5%	26
◇	Twisting Spirits Earl Grey Gin	41.5%	26
◇	Two Birds London Dry Gin	40%	24
◇	Two Birds Old Tom Gin	40%	24

◇ Two Birds Sipping Gin	47.3%	28
◇ Two Birds Speciality Cocktail Gin	40%	24
◇ Unicorn Tears Gin Liqueur	40%	28
◇ Unit Six Ultra Premium Gin	42%	28
◇ Victory Cold Gin	43.3%	24
◇ Vryheid Gin	44%	28
◇ Warner Edwards Harrington Botanical Garden Melissa Gin	43%	24
◇ Warner Edwards Harrington Dry Gin	44%	24
◇ Warner Edwards Harrington Sloe Gin	30%	22
Whitley Neill Blood Orange Gin	43%	22
Whitley Neill Gin	42%	20
Whitley Neill Quince Gin	43%	24
Whitley Neill Raspberry Gin	43%	22
Whitley Neill Rhubarb & Ginger Gin	43%	24
◇ Whittaker's Gin	42%	22
◇ Wicked Wolf Exmoor Gin	42%	24
◇ Willem Barentsz Premium Gin	43%	24
◇ Winchester Dry Gin	44%	26
◇ Wolf's Nose Gin	43%	22
◇ Worship Street Whistling Shop Cream Gin	43.8%	26
◇ Zephyr Blu Gin	40%	22
◇ Zymorgorium Marmalade Gin	40%	32
◇ Zymurgorium Mandarin Dynasty Gin	40%	32
◇ Zymurgorium The Original Manchester Gin	40%	32

ESTONIA (2)



◇ Crafter's Aromatic Flower Gin	44.3%	28
◇ Crafter's London Dry Gin	43%	28

FINLAND (7)



◇ Agras Akvavit Gin	43.7%	58
◇ Agras Gin	43.7%	58
◇ Arctic Blue Gin	44%	32
◇ Bothnia Bay Dry Gin	38%	24
Kalevala Distilled Gin	46.3%	22
Kalevala Navy Strength Gin	50.9%	24
Koskue Barrel-aged Gin	42.6%	26
Napue Gin	46.3%	24

FRANCE (29)

◇ Audemus Pink Pepper Gin	44%	26
◇ BR Essential London Dry Gin	40%	36
◇ C'est Nous Gin	40%	24
Citadelle No Mistake Old Tom Gin	46%	24
Citadelle Original Gin	44%	20
Citadelle Reserve Gin	44%	22
Citadelle Wild Blossom Gin	42.6%	22
◇ Citrum Small Batch Gin	40%	22
Diplome Gin	44%	22
◇ Esme Gin	40%	22
◇ Fair Barrel Aged Gin	42%	32
Fair Juniper Gin	42%	22
◇ Fieldfare Dry Gin	47%	34
◇ G.W. Goodwynn Co. Classic Gin	40%	23
G'Vine Floraison Gin	40%	20
G'Vine Nouaison Gin	43.9%	20
◇ G10 Gin	40%	22
◇ Gabriel Boudier Rare Dry Gin	46.5%	24
Gabriel Boudier Saffron Gin	40%	22
◇ Generous Coriander & Combava Gin	44%	32
Generous Gin	44%	22
◇ Gin Gold 999.9 Gin	40%	33
◇ Jin Dea Gin	40%	26
Le Gin 1 & 9 Gin	40%	20
Le Gin Christian Drouin Gin	42%	20
◇ Magellan Gin	41.3%	28
◇ Oli'Gin L'olive Gin	41%	28
Sorgin	43.0%	24

Sorgin

A fifth-generation member of the wine-making Lurton family of Bordeaux, Sorgin is François Lurton and partner Sabine Jaren's first foray into gin distillation. Designed to be a link between wine and spirits, this gin is made using Sauvignon Blanc grapes. Broom flower, lime zest and blackcurrant buds are added into the botanical mix to produce a gin that is intensely aromatic with fruity and herbal notes. We recommend this in a G&T with Elderflower Tonic and a twist of orange.

◇ St Maudez Gin	44.7%	26
◇ Thompson's Small Batch Gin	43%	26

GERMANY (55)

◇ 5 Continents Hamburg Dry Gin	47%	28
◇ A Mari Ocean Gin	43%	56
◇ Adler Berlin Dry Gin	42%	26
◇ Amato Wiesbaden Gin	43.7%	28
◇ Bavarka Bavarian Gin	46%	28
◇ Berliner Brandstifter Berlin Dry Gin	43.3%	28
Bitter Truth Pink Gin	40%	22
◇ Black Distillers Cut 2013 Gin	60%	36
◇ Boar Dry Gin	43%	46
◇ Brick Gin	40%	26
◇ Clocker's Gin	44%	28
◇ Clockers 3-a-gin St. Pauli Gin	44%	42
◇ Diamond London Dry Gin	45%	22
◇ Diamond Red Port Cask Finish Gin	45%	26
◇ Elephant Cask Aged Gin	52%	48
Elephant Dry Gin Navy Strength	57%	44
Elephant Gin	45%	32
Elephant Sloe Gin	35%	28
Feel! Munich Dry Gin	47%	26
◇ Ferdinand's Saar Dry Gin	44%	34
◇ Ferdinand's Saar Quince Gin	30%	36
◇ Forest Quersus Gin	42%	32
◇ Goldberner Gin	45%	30
◇ Granit Bavarian Gin	42%	32
◇ Grassl Bergbrenner Gin	43%	28
◇ Lebensstern London Dry Gin	43%	24
◇ Lebensstern Pink Gin	43%	24
◇ Luum London Dry Gin	40%	30
◇ Madame Geneva Blanc Gin	44.4%	22
◇ Madame Geneva Rouge Gin	41.9%	22
Marx Organic Gin	40%	26
◇ Monkey 47 Beef Pepper Gin	47%	48
◇ Monkey 47 Distiller's Cut Edition of 2016 Gin	47%	38
Monkey 47 Gin	47%	24

Monkey 47 Sloe Gin

29%

22

Monkey 47 Sloe Gin

Originating from the Black Forest, this popular gin is reinterpreted in a classic English style with sloe berries and the brand's signature 47 botanicals. Although it carries the natural sweetness of a typical sloe gin, this version is spicier and drier than other sloe gins with aromas of pepper, dried woody herbs and sweet red berries. This versatile liqueur can be drunk on its own or in a Negroni variation.

Mundart Kaiserstuhl Dry Gin	43%	30
Niemand Dry Gin	46%	32
◇ Raritas Juniper Gin	46%	28
◇ Rubus Gin	42%	28
◇ Sears Cutting Edge Gin	44%	22
◇ Siegfried Rheinland Dry Gin	41%	33
◇ Six Ravens Gin	46%	32
Skin Gin	42%	28
◇ Skin Gin Christmas Blue 2017	42%	32
◇ Spitzmund Gin	47%	33
◇ Steinhauser See Gin	48%	27
◇ Sul Gin	43%	28
◇ The Duke Munich Dry Gin	45%	28
◇ The Secret Treasures Ocean and Vulcano Gin	45.5%	24
◇ Triple Peak London Dry Gin	44%	32
◇ Van Laack Dry Gin	42%	38
Windspiel Gin	47%	28
Windspiel Reserve Premium Dry Gin	49.3%	42
Woodland Sauerland Dry Gin	45.3%	20

GREECE (1)



◇ Old Sport Gin	42%	22
-----------------	-----	----

ICELAND (3)



◇ VOR Icelandic Barrel-aged Gin	47%	28
◇ VOR Icelandic Gin	47%	26
◇ VOR Navy Strength Gin	57%	30

INDIA (1)



◇ Greater Than Gin	42.8%	22
◇ Stranger & Sons Gin	42.8%	18

INDONESIA (1)



◇ Robinson Dry Gin	40%	18
--------------------	-----	----

IRELAND (20)



◇ An Dulaman Irish Martime Gin	43.2%	28
◇ Bertha's Revenge Gin	42%	26
◇ Blackwater No.5 Irish Gin	41.5%	32
◇ Boatyard Double Gin	46%	27
◇ Bonac 24 Gin	42%	26
◇ Connacullin Irish Gin	47%	33
◇ Dingle Original Gin	42.5%	24
◇ Drumshanbo Irish Gunpowder Gin	43%	34
◇ Echlinville Single Estate Irish Pot Still Gin	46%	32
◇ Feckin Irish Gin	40%	24
◇ Glendalough Wild Autumn Botanical Gin	41%	26
◇ Glendalough Wild Spring Botanical Gin	41%	26
◇ Ha'Penny Gin	41%	28
◇ Jawbox Gin	43%	22
◇ Mor Gin	40%	24
◇ Mor Irish Gin	40%	22
◇ Shortcross Gin	46%	22
◇ Shortcross Small Batch Cask Aged Gin	44%	30
◇ The Exiles Irish Gin	41.3%	26
◇ Von Hallers Gin	44%	34

ITALY (33)

◇ Aduro Bell Pepper Gin	40%	34
◇ Argala Al Genepy Gin	45%	26
◇ Berto Distilled Dry Gin	43%	24
◇ Berto Juniperus Cask Finish	43%	42
◇ Bisbino Gin	40%	36
◇ Boigin Distilled Gin	40%	30
◇ Bordiga Rosa Gin	42%	28
◇ Bordiga Smoke Gin	42%	28
Bottega Bacûr Gin	45%	26

Bottega Bacûr Gin

Widely known for their range of Prosecco, Bacûr Gin is Bottega's first entry into the gin world. Beautifully packaged in metallic copper (bacûr means copper in ancient Greek), this gin uses locally-sourced botanicals from the surrounding Veneto region of Italy. This juniper-forward expression is well-balanced with notes of citrus, herb and spice from the lemon zest, myrtle and sage. Best served over ice with ATLAS Burma Tonic.

◇ Clandestino Dry Gin	40%	26
Del Professore Madame Gin	42.9%	22
Del Professore Monsieur Gin	43.7%	22
Family of Hounds Gin	42%	24
◇ Giniu Gin	40%	30
◇ Ginpilz Dry Gin	40%	28
◇ Grifu Gin	43%	24
Luxardo London Dry Gin	%	20
◇ Major Gin	47%	28
◇ Major Riserva Gin	47%	28
◇ Malfy con Limone Gin	41%	22
◇ Malfy Gin	41%	22
◇ Marton's Gin	47%	26
◇ Milano Giass Dry Gin	42%	38

◇ Occitan London Dry Gin	42%	22
◇ Old Grifu Gin	42%	26
◇ Pigskin London Dry Gin	40%	24
Piucinqe Gin	47%	20
Poli Marconi 46 Gin	46%	26
◇ Revenge Navy Gin	57%	34
◇ Rivo Gin	43%	22
Vallombrosa Gin	47%	22
◇ VII Hills Gin	43%	26

JAPAN (12)



◇ Benizakura 9148 Gin	42%	32
Ki No Bi Ginza Mori Gin	45.7%	28
Ki No Bi Kyoto Dry Gin	45.7%	26
Ki No Bi Sei Gin	54%	34
◇ Ki No Bi Cask Aged Kyoto Dry Gin	48%	158
◇ Ki No Tea Gin	46.7%	48
◇ Ko On IP 02	45%	48
◇ Kyoya Shuzo Yuzu Gin	50%	48
Nikka Coffey Gin	47%	22
Roku Gin	43%	22

Roku Gin

Taking after the Japanese word for six, Roku Gin features six quintessentially Japanese botanicals, harvested at the peak of its season. Cherry blossom and leaves (spring), sencha and gyokuro tea (summer), sansho pepper (autumn) and yuzu (winter) are added to eight traditional botanicals to create a complex gin with hints of green tea and citron. The slightly bitter finish goes amazingly well with Yuzu Tonic.

◇ Sakurao Limited Gin	47.0%	42
Sakurao Original Gin	47.0%	24
◇ Tatsumi Gin Nature	47.5%	48
Wa Bi Gin	47%	24

LIECHTENSTEIN (1)



- | | | |
|-------------------------|-----|----|
| ◇ Liechtenstein Dry Gin | 47% | 48 |
|-------------------------|-----|----|

LUXEMBOURG (3)



- | | | |
|----------------------------|-------|----|
| ◇ Ginix Hand Distilled Gin | 41% | 22 |
| ◇ Mansfeld Gin | 47.5% | 22 |
| ◇ Supa Saya Gin | 39.5% | 28 |

MEXICO (2)



- | | | |
|---------------------------------|-----|----|
| ◇ Mezcal MG Gin | 45% | 30 |
| Pierde Almas + 9 Botanicals Gin | 45% | 26 |

Pierde Almas + 9 Botanicals Gin

An interesting fusion of mezcal and gin. Pierde Almas +9 Botanicals Gin starts off with mezcal that is distilled twice before a selection of classic botanicals including nutmeg, orange peel and star anise, are introduced. The spirit is distilled once more to produce a gin that is delicately smoky with a presence of juniper in the mix. Smooth on the palate with a hint of salty and sweet, we recommend this gin in a Negroni or paired with Grapefruit Tonic.

MOLDOVA (1)



- | | | |
|----------------------------|-----|----|
| ◇ Tower Bridge (White) Gin | 40% | 22 |
|----------------------------|-----|----|

MYANMAR (1)



- | | | |
|-------------------|-----|----|
| ◇ Myanmar Dry Gin | 40% | 18 |
|-------------------|-----|----|

NETHERLANDS (76)

◇ Before Gin Genever	38%	22
◇ Blaankenheym & Nolet Oude Jenever	38%	30
Black Tomato Gin	42.3%	24
Bobby's Schiedam Dry Gin	42%	26
◇ Bobby's Schiedam Jenever	38%	24
◇ Bokma 5 Year De Vijf Jaren Genever	38%	24
◇ Bokma Oude Friesche Genever	38%	26
◇ Bols 6 Year Old Corenwyn Genever	40%	32
◇ Bols Corenwyn Genever	40%	32
Bols Genever	42%	22
◇ Bols Jonge Graanjenever	35%	22
Bols Zeer Oude Genever	35%	20
◇ Boomsma Jonge Pure Graanjenever	35%	20
◇ Brouwerij de Molen Gentle Gin	38%	34
◇ By The Dutch Old Genever	38%	22
Damrak Amsterdam Original Gin	41.8%	22
◇ De Borgen Dutch Cornwyn Genever	38%	22
◇ De Borgen Holland Gin	40.8%	26
◇ Echte Oude Friesche Genever	38%	22
◇ Feller Gin	40%	26
◇ Floryn Jonge Jenever	35%	22
Gin & Jonnie Gin	45%	22
◇ Goblet Jonge Graanjenever	35%	22
◇ Goodmans Gin	44%	22
◇ Hanami Gin	43%	24
◇ Hooghoudt Jonge Dubbele Graan Jenever	35%	22
◇ Hoppe Jonge Jenever	35%	22
◇ Ketel 1 Jenever	35%	20
◇ Legner 100% Jenever	30%	22
◇ Loopuyt Dry Gin	45.1%	24
◇ Nolet's Silver Dry Gin	47.6%	30
◇ Notarios XO Genever	35%	28
◇ Olifant Jonge Graanjenever	35%	22
Onder de Boompjes 10% Genever	35%	20
Onder de Boompjes 100% Maltwine Genever	40%	22
Onder de Boompjes Old Dutch Gin	38%	20
◇ Oud Amsterdam Dubbel Gebeide Genever	41%	22
◇ Oud Amsterdam Jonge Graan Genever	35%	22
◇ Rutte & Zn Jonge Graanjenever	35%	22
◇ Rutte & Zn Oude 5 Jenever	38%	22

Rutte Celery Gin

43%

20

Rutte Celery Gin

The Rutte family has been distilling genever and gin in Dordrecht, Holland since 1872. Using their signature ingredient of celery and a recipe that dates back to the 19th century, this gin is an example of how the old world meets new. Plenty of vegetal notes are present with aromas of lemon zest and coriander. The gin finishes with a pleasant warmth of pepper and juniper, perfect in a refreshing Gin Basil Smash.

Rutte Old Simon Genever	35%	20
◇ Rutte Paradyswyn Jenever	37.9%	38
Rutte Sloe Gin	30%	20
◇ Sikkim Bilberry Gin	40%	24
◇ Sikkim Privee Premium Gin	40%	26
◇ Skully Gin London Dry Gin	41.8%	24
◇ Skully Gin Oriental Citrus Gin	41.8%	24
◇ Skully Gin Smooth Wasabi Gin	41.8%	24
◇ Skully Gin Tangerine Twist Gin	41.8%	24
◇ Sloane's Dry Gin	40%	22
Sylvius Gin	45%	22
◇ Three Corner Dry Gin	42%	28
◇ V2C Dutch Dry Gin	41.5%	26
◇ Van Wees 15 Year Zeer Oude Genever	42%	36
◇ Van Wees Amsterdamsche Oude Genever	35%	24
◇ Van Wees Bessen Jenever	20%	22
◇ Van Wees Dubbel Gebeidi Zeer Oude Genever	40%	24
◇ Van Wees Jonge Amsterdamshe Graangenever	35%	22
◇ Van Wees Korewijn Rembrandt Genever	40%	22
◇ Van Wees Loyal 5 Year Old Zeer Oude Genever	40%	30
◇ Van Wees Roggenaer 15 Year Genever	40%	48
◇ Van Wees Roggenaer 3 Year Genever	40%	28
◇ Van Wees Roggenaer Genever	40%	26
◇ Verhoeven Jonge Graan Genever	35%	22
◇ VL 92 Gin	41.7%	28
◇ Vording's Gin	44.7%	28
◇ Wagging Finger Exercise V1.0 Gin	44%	24
◇ Wagging Finger Exercise V2.0 Gin	44%	24
◇ Wynand Fockink Rogge Jenever	38%	30
◇ Zuidam 1 Year Rogge Genever	35%	22
◇ Zuidam 3 Year Zeer Oude Genever	38%	28
◇ Zuidam 5 Year Zeer Oude Genever	38%	30
◇ Zuidam Dutch Courage Dry Gin	44.5%	24
◇ Zuidam Korewijn 1 Year Genever	38%	26
◇ Zuidam Young Grain Genever	35%	22

NEW ZEALAND (29)

◇ Blenheim Bay Gin	42.5%	26
Broken Heart Barrel Aged Gin	40%	40
Broken Heart Gin	40%	22
Broken Heart Navy Strength Gin	57%	30

Broken Heart Navy Strength Gin

Joerg Henkenhaf and Bernd Schnabel spent three years perfecting their recipe until 2012 when Schnabel became ill and passed away. As a tribute, Henkenhaf shared Broken Heart Gin with the world and the rest, they say, is history. This navy strength edition is made with 40% more botanicals than its predecessor. Orange blossom, lavender and malt are just a few botanicals used in this gin. Earthy with a light citrus zest and a warm finish, this gin is best served with Mediterranean Tonic.

Broken Heart Quince Gin	30%	38
◇ Curiosity Dry Gin	40%	30
◇ Curiosity Negroni Gin	55%	34
◇ Curiosity Pinot Barrel Sloe Gin	27%	30
◇ Curiosity Recipe 23 Gin	42%	30
◇ Dancing Sands Barrel Aged Gin	48%	32
◇ Dancing Sands Dry Gin	44%	30
◇ Dancing Sands Saffron Gin	46%	32
◇ Dancing Sands Wasabi Gin	58%	36
◇ Hidden World Feijoa Gin	44%	32
◇ Hidden World Guardian Wild Spice Gin	44%	32
◇ Hidden World Navy Gin	60%	36
◇ Hidden World Oriental Spice Gin	44%	32
◇ Karven Dry Gin	40.8%	24
◇ Karven Ginseng Gin	40%	22
◇ Karven Raspberry Gin	40%	28
◇ Lighthouse Gin	42%	26
◇ Rogue Society Dry Gin	40%	24
◇ Sacred Spring Barrel Aged Gin	44%	32
◇ Scapegrace Dry Gin	42.2%	22
◇ South Gin	40.2%	24
◇ The Source Pure Cardona Barrel Aged Gin	47%	28
◇ The Source Pure Cardrona Gin	47%	24
◇ Vaione Pacific Gin	40.2%	22
◇ Victor Gin	42%	26

NORWAY (3)



◇ Harahorn Norwegian Gin	46%	28
◇ Kimerud Gin	47%	22
◇ Vidda Torr Gin	43%	26

PERU (2)



◇ Amazonian Gin Company Gin	41%	24
◇ GIN'CA Gin	40%	24

PHILIPPINES (2)



◇ Ginebra San Miguel Premium Gin	35%	18
◇ Ginebra San Miguel Gin	40%	16

PORTUGAL (13)



◇ 6M Friday Chic Gin	40%	26
◇ Amicis Gin	40%	22
◇ Azor Gin	40%	29
◇ Big Boss Gin	40%	22
◇ Big Boss Pink gin	40%	24
◇ Edmundo Single Estate Alvarinho Infused London Dry Gin	40%	46
◇ Friends Gin	43%	24
◇ Friends Touriga Nacional Edition Gin	43%	28
◇ Nao Premium Gin	40%	22
◇ Sharish Blue Magic Gin	40%	34
◇ Sharish Gin	40%	32
◇ Tinto Red Premium Gin	40%	24
◇ Will's Premium Gin	40%	27

ROMANIA (1)

Wembley London Dry Gin	37.5%	22
------------------------	-------	----

RUSSIA (1)

◇ Polugar No. 10 Russian Gin	38.5%	28
------------------------------	-------	----

SCOTLAND (72)

◇ 57 London Dry Navy Strength Gin	57%	32
◇ Arbikie Kirsty's Gin	43%	26
◇ Avva Navy Strength Scottish Gin	57.2%	28
◇ Avva Scottish Gin	43%	27
◇ Blackwoods 2012 Vintage 40% Gin	40%	26
◇ Blackwoods Superior 2012 Limited Edition 60% Gin	60%	28
◇ Cadenhead's Classic Gin	50%	22
◇ Caorunn Scottish Gin	41.8%	22
◇ Castle Gin	43%	24
◇ Colonsay Gin	47%	32
◇ Crossbill Small Batch Highland Dry Gin	43.8%	28
◇ Crossbill Special Edition 200 Year Old Single Specimen Juniper Dry Gin	59.8%	58
◇ Daffy's Manor Racing Limited Edition Gin	43.2%	32
◇ Daffy's Small Batch Premium Gin	43.2%	26
◇ Darnley's View Gin	40%	24
◇ Darnley's View Spiced Gin	42.7%	26
◇ Eden Mill Hop Gin	46%	28
◇ Eden Mill Love Gin	42%	28
◇ Eden Mill Original Gin	42%	26
◇ Edinburgh Cannonball Navy Strength Gin	57.2%	28
◇ Edinburgh Christmas Gin	43%	28
◇ Edinburgh Gin	43%	24
◇ Edinburgh Raspberry Gin Liqueur	20%	26
◇ Edinburgh Seaside Gin	43%	26
◇ El Gin	40%	26
◇ Esker Gin	42%	28
◇ Firkin Islay Cask Gin	46%	40
◇ Gilt Gin	40%	30
◇ Ginerosity Gin	40%	27
◇ GlenWyvis Limited Edition Gin	40%	29

◇ Gordon Castle Gin	43%	26
Hendrick's Gin	41.4%	22
◇ Hendrick's Orbium Gin	43.4%	26
◇ House of Elrick Gin	42%	26
◇ Inshriach Original Gin	43%	26
◇ Jinzu Gin	41.3%	24
◇ Kilmahew Gin	42%	26
◇ Kirkjuvagr Orkney Gin	43%	26
◇ Lilliard Gin	40%	24
◇ Lussa Gin	42%	33
◇ Makar Glasgow Gin	43%	22
◇ Makar Old Tom Gin	43%	22
◇ McQueen Signature Dry Gin	42%	26
◇ McQueen Smokey Chilli Gin	42%	26
◇ McQueen Sweet Citrus Gin	42%	26
◇ Misty Isle Gin	41.5%	26
NB Gin	42%	24
◇ Orkney Gin Company Johnsmas Gin	41.3%	28
◇ Orkney Gin Company Mikkemas Gin	41.3%	28
◇ Persie Herby & Aromatic Gin	40%	24
◇ Pickering's Gin	42%	22
◇ Pickering's Oak Aged Speyside Gin	47%	32
◇ Pickering's Original 1947 Gin	42%	22
◇ Pickering's Sloe Gin	30%	22
Porter's Gin	41.5%	22
Rock Rose Mey Selections Gin	41.5%	26

Rock Rose Mey Selections Gin

Established with the goal of creating spirits that reflect the beauty of the Highlands, Martin and Claire Murray started their distillery in Dunnet, a village in Scotland, where fresh air and pure water are in full abundance. This gin uses rhodiola rosea or 'a rose in the rocks' and botanicals foraged around the Castle of Mey, such as sweet cicely, bog myrtle and apple mint. A floral gin that is warm in depth and flavour with notes of liquorice and aniseed, this gin is fantastic in a French 75.

◇ Rock Rose Scottish Botanicals Gin	41.5%	24
◇ Rock Rose Scottish Navy Strength Gin	57%	28
◇ Rock Rose Scottish Summer Edition Gin	41.5%	24
◇ Rock Rose Spring Gin	41.5%	24
◇ Rock Rose Winter Gin	41.5%	24
◇ Shetland Reel Gin	43%	24
◇ Shetland Reel Holly Days Gin	43%	26
◇ Shetland Reel Ocean Sent Gin	49%	26

◇ Shetland Reel Simmer Gin	49%	26
◇ Stirling Gin	43%	26
◇ Strathearn Citrus Gin	40%	24
◇ Strathearn Classic Gin	40%	24
◇ Strathearn Heather Rose Gin	40%	24
The Botanist Gin	46%	22
◇ The House of Botanicals Old Tom Gin	47%	26
◇ Verdant Dry Gin	43%	26

SINGAPORE (2)



Brass Lion Gin	40%	20
Tanglin Gin	42%	22

Tanglin Gin

Singapore's first locally distilled gin. Using unique ingredients such as Indian Amchoor and dried orchid stalks, this gin is an interesting blend of complex, yet balanced flavours. Whole vanilla beans are also added for a smooth richness that combines wonderfully with the sweet citrus of organic oranges. This bold gin is perfect in a classic Negroni.

SOUTH AFRICA (31)



◇ Buitenverwachting Constantia Gin	37%	28
◇ Cape Town Rooibos Red Gin	43%	24
◇ Clemengold Citrus Gin	43%	26
◇ Ginifer Barrel Aged Chili Infusion Gin	43%	30
◇ Ginifer Handcrafted Gin	43%	24
◇ Ginologist Spice Gin	43%	24
◇ Hope On Hopkins London Dry Gin	43%	24
◇ Hope On Hopkins Mediterranean Gin	43%	26
◇ Hope On Hopkins Salt River Gin	43%	26
Inverroche Amber Gin	43%	24
Inverroche Classic Gin	43%	24
◇ Inverroche Verdant Gin	43%	24
◇ Jorgensen's Distillery Hibiscus Gin	43%	26
◇ Jorgensen's Distillery Original Gin	43%	26
◇ Musgrave Crafted Gin	43%	26

◇ Musgrave Pink Gin	43%	26
◇ New Harbour Distillery Rooibos Infused Gin	43%	24
◇ New Harbour Distillery Spekboom Gin	43%	24
◇ Pienaar & Son Empire Gin	43%	26
◇ Pienaar & Son Orient Gin	43%	26
◇ Six Dogs Distillery Karoo Gin	43%	24
◇ Stretton's Double Cut Gin	43%	22
◇ Stretton's London Dry Gin	43%	22
◇ The General's Gin	43%	32
◇ Time Anchor Distillery London Dry Gin	43%	26
◇ Triple Three Juniper Gin	43%	24
◇ Westcliff Gin	43%	24
◇ Wildcraft Gin Equinox 79	43%	38
◇ Woodstock Gin Co Casked Aged Gin	43%	22
◇ Woodstock Gin Co High Tea Gin	43%	24
◇ Woodstock Gin Co Inception Beer Base Gin	43%	24

SPAIN (68)



◇ 19 Flors Gin	40%	22
◇ 5th Air Black Gin	40%	24
◇ 5th Earth Citrus Gin	42%	24
◇ 5th Fire Red Fruits Gin	42%	24
◇ 5th Water Floral Gin	42%	24
◇ Akori Gin	42%	26
◇ Alkkemist Gin	40%	22
◇ BCN Gin	40%	28
◇ Berrypickers Gin	38%	22
◇ Botanic Kiss Gin	37.5%	24
◇ Botanic Premium London Dry Gin	40%	26
◇ Botanic Ultra Premium London Dry Gin	45%	28
◇ Fever Island Premium Gin	40%	24
◇ Germa Dry-Gin	44%	22
◇ Get Back Blue Gin	40%	22
◇ Get Back Pink Gin	40%	22
◇ Gin Eva	45%	28
◇ Gin Loë	40%	24
◇ Gin Mare	42.7%	22
◇ Gin SEA	40%	22
◇ Ginbraltar Spanish Citrus Gin	40%	22
◇ Ginebra K-25 Gin	45%	22
◇ Ginraw Gin	42.3%	26
◇ Ginself Gin	40%	30
◇ Harbour Distilled Gin	40%	24

◇ Jodhpur Gin	43%	22
◇ Jodhpur Reserve London Dry Gin	43%	32
◇ Kinross Citric & Dry Gin	40%	22
◇ Kinross Tropical & Exotic Fruits Gin	40%	22
◇ Kinross Wild Berry Fruits Gin	40%	22
Larios Ginebra Mediterranea Gin	37.5%	23
◇ Law Premium Gin	44%	32
◇ Le Tribute Gin	43%	26
◇ LEVEL Gin	44%	22
◇ LEVEL Reserve Gin	44%	24
◇ M5 Gin	48%	26
◇ Macaronesian White Gin	48%	24
Mascaro 9 Gin	40%	22
◇ Master's Gin	40%	22
◇ Modernessia Gin	40%	23
◇ Mom God Save The Gin	39.5%	22
◇ No. 0 London Dry Gin	40.8%	22
Nordés Atlantic Galician Gin	40%	24
◇ Nura Menorca Dry Gin	40%	22
◇ NUT London Dry Gin	45%	26
◇ Only Gin	43%	22
◇ Platinum TV Gin	43%	22
◇ Platu Gin	39%	32
◇ Port of Dragons 100% Pure Gin	40%	22
◇ Puerto de Indias Pure Black Edition Gin	40%	22
◇ Rives 1880 Gin	38.3%	22
◇ Ruchey Nispero London Dry Gin	40%	24
Santamania Four Pillars Gin	40%	24
Santamania Lola y Vera Gin	40%	24
Santamania London Dry Gin	41%	26
Santamania Reserva Gin	41%	26
◇ Siderit Gingerlime Gin	43%	26
◇ Siderit Hibiscus Gin	43%	26
◇ Siderit London Dry Gin	43%	22
◇ Simple Gin	40%	24
◇ Suau Gin	43%	22
◇ Tann's Gin	40%	28
◇ The Botanical's Premium London Dry Gin	42.5%	22
◇ Valxerit Gin	37.5%	24
◇ Vones London Dry Gin	40%	24
◇ Voortrekker The Pioneer's Gin	40%	24
◇ Wint & Lila Gin	40%	22
Xoriguer Mahon Gin	38%	22

SRI LANKA (1)

Colombo No. 7 Gin	43.1%	20
-------------------	-------	----

SWEDEN (15)

◇ Herno Gin	40.5%	28
◇ Herno Juniper Cask Gin	47%	58
◇ Herno Navy Strength Gin	57%	34
◇ Herno Old Tom Gin	43%	28
◇ Herno Sipping Sherry Cask Gin	46.3%	58
◇ Herno Sloe Gin	30%	28
◇ ImaGin Gin	40%	22
◇ Right Gin	40%	22
◇ Spirit of Hven Organic Gin	40%	28
◇ Spirit of Hven Organic Navy Strength Gin	57.1%	36
◇ Strane London Dry Merchant Strength Gin	47.4%	34
◇ Strane London Dry Uncut Strength Gin	76%	30
◇ Strane Navy Strength London Dry Gin	57.1%	38
◇ Strane Oaked Gin	55%	42
◇ Wannborga O Gin	40.1%	28

SWITZERLAND (27)

◇ 27 Premium Appenzeller Dry Gin	43%	28
◇ 82 Dry Gin	45%	44
◇ Arctic Velvet Gin	40%	30
◇ Basilisk Dry Gin	44%	42
◇ Bonifaz Dry Gin	41%	38
◇ Breil Pur Gin	45%	33
◇ Deux Freres Dry Gin	43%	38
◇ Gin 27 Appenzell Dry Din	43%	28
◇ Ginuine Alpine Herbs Gin	40%	30
◇ Ginune Strawberry Gin	40%	30
◇ Matte Dry Gin	42%	38
◇ Matte Sloe Gin	28%	36
◇ Matters Nutmeg Gin	44%	22
◇ Modernist Alpine Dry Gin	44%	22

◇ Modernist Old Tom Gin	42.5%	36
◇ ingenious! Smoked & Salted Gin	42%	36
◇ ingenious! Summer Gin	42%	40
◇ ingenious! Swiss Blended Gin	45%	36
◇ Ojo De Agua Dry Gin	43%	22
◇ Rheinbrand Dry Gin	40%	38
◇ Rheinbrand Hemp Edition Gin	40%	38
◇ Studer Swiss Classic Gin	40%	33
◇ Studer Swiss Gold Gin	40%	36
◇ Swiss Crystal Gin	46%	32
◇ Tschin Gin	40%	38
◇ Turicum Dry Gin	41.5%	34
◇ Xellent Edelweiss Gin	40%	28

TAIWAN (1)



◇ Yu Shan Taiwan Gin	42%	20
----------------------	-----	----

THAILAND (3)



◇ Grandma's Jinn Gin	40%	22
Iron Balls Gin	40%	22
◇ Kristall Dry Gin	40%	22

UNITED STATES OF AMERICA (125)



◇ Anchor Genevieve Genever-Style Gin	47.3%	33
◇ Aria Portland Dry Gin	45%	27
◇ ATELIER Vie Euphrosine #9 Gin	45%	26
◇ Automatic Sea Gin	45%	26
Aviation Gin	42%	20
◇ Barton Gin	40%	22
◇ Battle Standard Barrel Finished Gin	45%	26
◇ Battle Standard Navy Strength Gin	45%	28
◇ Battle Standard Standard Strength Gin	45%	26
◇ Bell Ringer London Dry Gin	47.2%	26
◇ Berkshire Mountain Ethereal Gin	43%	22
◇ Blade Gin	47%	32
Bluecoat Barrel Reserve Dry Gin	47%	22
Bluecoat Dry Gin	47%	20
◇ Boardroom Gin	40%	22

◇ Botanica Spiritvs Gin	45%	24
◇ Bourbon Barreled Big Gin	47%	30
◇ Brandon's Rock Town Gin	46%	23
◇ Breukelen Distilling Glorious Gin	45%	26
◇ Breukelen Distilling Glorious Gin Oaked	45%	26
Bristol Bay Gin	45%	22
Brooklyn Gin	40%	20
◇ Bummers & Lazarus Dry Gin	47%	26
◇ CapRock Gin	41%	24
◇ Cardinal American Gin	42%	26
◇ Catoctin Creek Watershed Gin	46%	22
Chief Gowanus Gin	44%	20
Cold River Traditional Gin	47%	23
◇ Commerce Gin	42.5%	22
◇ Conniption Gin	44%	26
◇ Conniption Navy Strength Gin	57%	28
Corsair Barrel-Aged Gin	46%	26
Corsair Gin	44%	22

Corsair Gin

Formed by childhood friends Darek Bell and Andrew Webber, Corsair Distillery was originally based in Kentucky but has since moved production to Nashville, Tennessee to establish the city's first craft distillery since prohibition. Boasting an unusual mix of traditional botanicals, this gin is citrusy, smooth and refreshing but with a noticeable savoury note. We recommend having this in a Red Snapper, the gin variation of a Bloody Mary.

Corsair Steampunk Gin	45%	24
◇ Counter Gin	40%	22
◇ Crater Lake Gin	47.5%	29
◇ Death's Door & East London Liquor Company Collaboration Gin	47%	28
Death's Door Gin	47%	20
◇ DH Krahn Gin	40%	28
◇ Doc Porter's Gin	44%	25
Dorothy Parker Gin	44%	22
◇ Dry Fly Barrel Reserve Gin	40%	24
Dry Fly Gin	40%	22
◇ Ebb + Flow Gin	47%	24
◇ Ebb + Flow Old Tom Gin	44%	24
◇ Far North Gustaf Navy Strength Gin	57%	28
◇ Far North Solveig Gin	43.5%	26
◇ Farallon Gin	43%	22
Farmer's Organic Gin	46.7%	22
FEW American Gin	40%	22

FEW Barrel Gin	46.5%	28
◇ FEW Breakfast Gin	42%	28
◇ FEW Publican Genever	45%	28
◇ Fid Street Hawaiian Gin	45%	28
◇ Golden Moon Cask Reserve Gin	45%	32
◇ Golden Moon Gin	45%	28
Greenhook Ginsmiths Gin	47%	24
◇ Greylock Gin	40%	22
◇ Gun Club Gin	50%	22
Half Moon Orchard Gin	46%	24
◇ Hedge Trimmer Gin	42%	22
◇ Imagination Gin	40%	22
◇ J. Rieger Midwestern Dry Gin	46.1%	22
◇ Journeyman Bilberry Black Hearts Gin	45%	24
Junipero Gin	49.3%	30
◇ Junipero Gin San Francisco Strength	49.3%	24
◇ Knickerbocker Gin	42.5%	24
◇ Koval Barreled Gin	47%	28
Koval Dry Gin	47%	24
◇ Lee Spirits Dry Gin	45%	20
◇ Leopold's American Gin	40%	26
◇ Leopold's Navy Strength American Gin	57%	30
◇ Letherbee Autumnal Gin	48%	26
◇ Letherbee Gin	48%	26
◇ Madam Pattirini Gin	44%	24
◇ McElroy's Corruption Gin	45%	24
◇ Monarch London Dry Gin	40%	22
◇ Nautical American Gin	42%	22
◇ Neversink Spirits Gin	43%	22
◇ New Amsterdam Straight Gin	40%	22
New Deal 33 Gin	46%	22
New Deal No.1 Gin	45%	22
◇ No. 209 Whitechapel Victorian Dry Gin	45%	28
◇ No.209 Cabernet Sauvignon Barrel Reserve Gin	46%	28
◇ No.209 Chardonnay Barrel Reserve Gin	46%	28
◇ No.209 Kosher For Passover Gin	46%	28
◇ No.209 Sauvignon Blanc Barrel Reserve Gin	46%	28
◇ Norseman Pineapple Chipotle Gin	40%	26

	Perry's Tot Navy Strength Gin	57%	24
	Pickney Bend Handcrafted American Gin	47%	24
◇	Prescribed Spirits Barrel Finished Gin	42%	24
	Ransom Dry Gin	43%	20
	Ransom Old Tom Gin	44%	20
◇	Roxor Artisan Gin	45%	27
◇	Seagram's Extra Dry Gin	40%	24
◇	Seersucker Southern Style Gin	42%	26
◇	Small's Gin	43%	24
◇	Smooth Ambler Double Barrel Aged Gin	45.9%	32
◇	Smooth Ambler Greenbrier Gin	40%	26
◇	Spirit Works Distillery Gin	43%	25
◇	St. Augustine New World Gin	47%	24
	St. George Botanivore Gin	45%	20
	St. George Dry Rye Gin	45%	20
	St. George Dry Rye Reposado Gin	49.5%	26
	St. George Terroir Gin	45%	20
◇	Swallowtail London Dry Gin	45%	22
◇	Swallowtail Navy Strength Gin	57%	24
◇	Swallowtail Premium Gin	45%	24
◇	Swallowtail Singlebarreled Gin	44%	22
◇	The Walter Collective Gin	45%	22
◇	Townshend's Gin	40%	24
	TRU Organic Gin	42%	24
◇	Uncle Val's Botanical Gin	45%	26
◇	Uncle Val's Peppered Gin	45%	24
◇	Valentine Liberator Old Tom Gin	45.2%	26
◇	Valor West Coast Gin	43.1%	22
◇	Vapor Distillery Ginskey Barrel Rested Gin	47%	28
◇	Vapor Distillery Rhok Gin	47%	28
◇	Vigilant Gin	42%	22
◇	Vim & Petal Gin	42%	22
◇	Volstead's Folly American Gin	40.5%	24
◇	Voyager Dry Gin	42%	22
◇	Warwick Gin	40%	22
◇	Wire Works American Gin	45%	24
◇	Wire Works Special Reserve American Gin	43.9%	24

VIETNAM (1)

Paper Lantern Sichuan Pepper Gin	40%	22
----------------------------------	-----	----

WALES (12)

◇ Aber Falls Orange Marmalade Gin	41.3%	22
◇ Aber Falls Rhubarb & Ginger Gin	41.3%	22
Brecon Botanicals Gin	40%	24
Brecon Gin	43%	22
◇ Da Mhile Farmhouse Botanical Organic Gin	42%	24
◇ Da Mhile Oak-Aged Gin	42%	24
◇ Da Mhile Seaweed Organic Gin	42%	24
◇ Eccentric Cardiff Aromatic Dry Gin	37.5%	24
◇ Eccentric Limbeck New Western Gin	45%	28
◇ Eccentric London Dry Gin	42%	26
◇ Eccentric Young Tom Gin	46%	28
◇ Pollination Gin	45%	28

RARE & COLLECTIBLE (43)

◇ A.A. Baker's Finest Dry Gin (1960s)	43%	77
◇ Aguila Negra Dry Gin (1960s)	40%	98
◇ Ancora Old Tom Gin (1910s)	40%	208
◇ Aurum Dry Gin (1950s)	44%	98
◇ Beefeater London Dry Gin (1960s)	47%	78
◇ Beefeater London Dry Gin (1970s)	40%	78
◇ Beefeater London Dry Gin (1980s)	40%	78
◇ Beefeater London Dry Gin (1990s)	40%	58
◇ Booth's Finest Dry Gin (1955)	40%	128
◇ Booth's Finest Dry Gin (1961)	40%	108
◇ Booth's Finest Dry Gin (1970s)	40%	78
◇ Booth's High & Dry London Dry Gin (1920s)	47.3%	228
◇ Booth's High & Dry London Dry Gin (1980s)	40%	68
◇ Buton Dry Gin (1950s)	40%	128
◇ Coates & Co.'s Plym-Gin Dry Gin (1960s-1970s)	46%	78
◇ Crown Jewel Gin (1990s)	50%	66
◇ Doney & Nipote Florentine Dry Gin (1930s)	44%	178
◇ Farquay's Special London Dry Gin (1930s)	40%	178
◇ Findlater, Mackie, Todd & Co. Todd's London Dry Gin (1970s)	40%	98
◇ Fulie's Estimable London Dry Gin (1960s)	40%	98

◇ Gilbeys London Dry Gin (1949-1959)	46.2%	108
◇ Gordon's Dry Export Gin (1950s)	47.3%	118
◇ Gordon's Dry Export Gin (1960s)	47.3%	88
◇ Gordon's Picadilly Shaker Cocktail (1936-1952)	26%	128
◇ Gordon's Special Dry London Gin (1970s)	40%	77
◇ Gordon's Special Dry London Gin (1980s)	38%	68
◇ Gordon's Special Dry London Gin (1990s)	38%	48
◇ Grants Special Dry Gin	40%	88
◇ Greenall's High and Dry Gin (1920s)	40%	228
◇ Lopez Hermanos Kintongs Gina Seca Gin (1960s)	40%	88
◇ Luxardo Dry Gin (1960s)	40%	98
◇ Martini & Rossi Bosford London Dry Gin (1960s)	43%	78
◇ Pisanti's Taby Cat Dry Gin (1950s)	40%	118
◇ Plymouth Gin (1910s)	40%	208
◇ Richard Wilson's Fine Old Dry Gin (1930s)	40%	198
◇ Schenley Smooth American Gin (1950s)	50%	58
◇ Seager's Special London Dry Gin (1940s)	40%	168
◇ Society's Gin (1970s)	40%	68
◇ Southwark Distillers Cruiser London Dry Gin (1970s)	40%	78
◇ Stock's Wapping Dry Gin (1980s)	38%	88
◇ Tanqueray Special Dry-Distilled English Gin (1960s)	47.3%	88
◇ The Empire Special Extra Strength Dry Gin (1930s)	40%	178
◇ The Hamilton Distilling Co.'s Tower of London Dry Gin (1970s)	43%	76
◇ V.F. Fleeton Portuguese Dry Gin (1960s)	40%	128
◇ Wynand Fockink Geneva (1900)	40%	158



FINE SPIRITS OF THE WORLD

WHISK(E)Y

One of our other great spirituous loves is the world of fine whiskies. At ATLAS, we maintain a rich, respectful selection of Scotch, Irish, Japanese and American whiskies. We are particularly proud to offer a diverse range of single malts from all regions and of a broad range of age statements. From sherry cask finishes to smoke-driven malts, we can propose a whisk(e)y for all palates and occasions. *Sláinte!*

United States of America, Bourbon

Basil Hayden's Small Batch Bourbon	40%	20
Blanton's Gold Edition Bourbon	51.5%	24
Buffalo Trace Bourbon	40%	16
Bulleit Bourbon	45%	18
Elijah Craig Small Batch	47%	18
Four Roses Single Barrel Bourbon	50%	24
Four Roses Small Batch Bourbon	45%	20
High West American Prairie Bourbon	46%	20
Knob Creek 8 Year Bourbon	40%	26
Jefferson's Very Small Batch Kentucky Straight Bourbon	41.2%	20
Jefferson's Reserve Bourbon	45.1%	26
Maker's Mark Bourbon	45%	18
Michter's US*1 Small Batch Bourbon	45.7%	20
Michter's 10 Year Single Barrel Bourbon	47.2%	36
□ Pappy Van Winkle Family Reserve 23 Year Bourbon	47.8%	460
Rebel Yell Kentucky Straight Bourbon	40%	16
Rowan's Creek Bourbon	50.1%	18
Willett Pot Still Reserve Bourbon	47%	20
Woodford Reserve Bourbon	45.2%	24

The □ symbol denotes special bottles from the Family Collection.

United States of America, Rye

Bulleit Rye Whiskey	45%	18
Knob Creek Rye Whiskey	50%	26
Michter's 10 Year Single Barrel Straight Rye Whiskey	46.4%	40
Michter's US*1 Single Barrel Rye Whiskey	42.4%	22
Rebel Yell Small Batch Rye Whiskey	45%	16
Rittenhouse Rye 100 Whiskey	50%	18
Vulson White Rhino Rye Spirit	41%	20
WhistlePig 10 Year Rye Whiskey	50%	34
Willett 3 Year Single Barrel Cask Strength Rye Whiskey	56.3%	24
Willett 6 Year Single Barrel Cask Strength Rye Whiskey	58.7%	32
Willett 7 Year Single Barrel Cask Strength Rye Whiskey	57.2%	36
Willett 8 Year Single Barrel Cask Strength Rye Whiskey	58.8%	36

United States of America, Other Whiskeys

Death's Door White Whiskey	40%	18
High West Campfire Whiskey	46%	22
Michter's US*1 Sour Mash	43%	22
St. George Single Malt Whiskey	43%	28

Canada, Canadian Whisky

Canadian Club	40%	16
---------------	-----	----

Ireland, Irish Whiskey

Jameson Irish Whiskey	40%	16
Redbreast 12 Year Pot Still Irish Whiskey	40%	20
Redbreast 15 Year Pot Still Irish Whiskey	46%	26

Japan, Japanese Blended Whisky

Hakushu 12 Year	43%	56
Hakushu 18 Year	43%	178
Hakushu Distiller's Reserve	43%	36
Hibiki 12 Year	43%	48
Hibiki 17 Year	43%	178
Hibiki 21 Year	43%	208
Hibiki "Japanese Harmony"	43%	34
□ Hibiki "Mellow Harmony"	40%	190
□ Hibiki Special Bottle Collection 2012, 21 Year	43%	240
□ Hibiki Special Bottle Collection 2013 "Aritayaki", 21 Year	43%	240
□ Hibiki Special Bottle Collection 2013 "Kutaniyaki", 21 Year	43%	240
□ Hibiki Special Bottle Collection 2015 "Aritayaki", 30 Year	43%	420
Nikka Coffey Grain	45%	26
Nikka From The Barrel	51.4%	24
Suntory "The Chita"	43%	25
□ Suntory "The Peninsula" 2014	43%	325
Yamazaki 12 Year	43%	50
Yamazaki 18 Year	43%	198
Yamazaki Distiller's Reserve	43%	35
□ Yamazaki "Limited Edition" 2014	43%	105
□ Yamazaki "Limited Edition" 2015	43%	105
□ Yamazaki "Limited Edition" 2016	43%	105

Japan, Japanese Single Malt

□ Karuizawa "Cask Strength 5th Release"	61%	275
□ Karuizawa "Cask Strength 6th Release"	59.5%	275
□ Karuizawa "Cask Strength 7th Release"	60.5%	275
□ Karuizawa "Cask Strength 8th Release"	60.1%	275
□ Karuizawa "Cask Strength 9th Release"	59.6%	275
□ Karuizawa "Cask Strength 10th Release"	59.7%	275
□ Karuizawa "Cask Strength 11th Release"	59.2%	275
□ Karuizawa "Cask Strength 12th Release"	59.2%	275
□ Karuizawa "Cask Strength 13th Release"	59.6%	275
□ Karuizawa "Cask Strength 14th Release"	59.7%	275
□ Karuizawa "Geisha" Single Cask Sherry Butt 16 Year No. 125	61.5%	305
□ Karuizawa "Geisha" Single Cask Sherry Butt 17 Year No. 7436	60.6%	305
□ Karuizawa "Geisha" Single Cask Sherry Butt 26 Year No. 7402	60.6%	360

□ Karuizawa "Black" Single Cask Sherry Butt 16 Year No. 2332	58.5%	305
□ Karuizawa "Blue" Single Cask Sherry Butt 16 Year No. 7221	59%	305
□ Karuizawa "Green" Single Cask Sherry Butt 15 Year No. 2339	61.1%	305
□ Karuizawa "Pink" Single Cask Sherry Butt 17 Year No. 895	58.6%	305
□ Karuizawa "Noh" Single Cask Sherry Butt 15 Year No. 2326	62.2%	345
□ Karuizawa "Noh" Single Cask Sherry Butt 21 Year No. 6149	63.6%	420
□ Karuizawa "Noh" Single Cask Sherry Butt 22 Year No. 7460	62.3%	450

India

Amrut Fusion	50%	22
--------------	-----	----

Taiwan

Kavalan Sherry Cask	48%	42
---------------------	-----	----

Scotland, Blended Scotch

□ Ballantine's 12 Year (1980s)	43%	80
□ Ben Alder Finest Scotch Whisky (1990s)	40%	85
□ Black And White "Buchanan's Choice" (1960s)	43%	125
□ Black Barrel Single Grain (2000s)	40%	85
□ Black Jack Rare Old Scotch Whisky (1980s)	40%	85
□ Blairmhor "Selected Quality" Pure Malt (1980s)	40%	85
□ Buchanan's Reserve 12 Year (1970s)	43%	85
□ Calvary (1970s)	40%	80
□ Campbeltown Loch (2009)	40%	80
□ Carnaby St. 4 Year (1970s)	43%	80
□ Chequers 12 Year (1980s)	40%	80
□ Chivas Regal 12 Year	40%	20
□ Clan Robertson (1960s)	43%	80
□ Clanroy (1970s)	43%	80
□ Compass Box "Asyla" (First Release)	43%	85
□ Compass Box "Eleuthera" All Malt (First Release)	46%	85
□ Cutty Sark (1980s)	40%	80
□ Dalvegan Old Highland Malt 10 Year (1970s-1980s)	43%	80
□ Defender "From Those Who Build The World"	40%	85
□ Dewar's White Label (1970s)	40%	80
□ Glen Dowan Special Reserve	40%	80
□ Grand Old Parr 12 Year (1980s)	43%	80

□ Glen Orchy Pure Malt 8 Year (2005)	40%	85
□ Glenfairn Pure Malt 8 Year (1980s)	40%	85
□ Grant's (1980s)	40%	85
□ Highland Fusilier Finest 8 Year (1970s)	40%	85
□ Highland Queen (1970s)	43%	80
□ His Excellency Special Reserve	43%	80
□ House of Scotland Special Reserve 12 Year (1970s)	43%	80
□ Inverness Cream (1980s)	43%	80
□ Islay Mist 8 Year (1990s)	40%	85
□ Isle Of Skye 8 Year (2009)	40%	85
Johnnie Walker Black Label	40%	18
Johnnie Walker Blue Label	40%	50
Johnnie Walker Gold Label	40%	22
□ Kintore	43%	80
□ Macleay Duff "Antique" (1980s)	40%	80
□ Macphail's Pure Malt 15 Year (1980s)	40%	80
Monkey Shoulder Triple Malt	40%	18
□ The Antiquary "Millennium Edition" 21 Year	43%	105

Scotland, Single Malt Scotch

□ Aberlour-Glenlivet Campbell's Distillery Ltd. 8 Year (1965)	50%	135
Auchentoshan 12 Year	40%	26
Auchentoshan Three Wood	43%	30
Ardbeg 10 Year	46%	22
Balvenie Caribbean Cask 14 Year	43%	30
Balvenie DoubleWood 12 Year	40%	22
Balvenie PortWood 21 Year	40%	90
□ Blairfindy 40 Year "Blairfindy Raw Cask" Blackadder No.4711	55%	300
Bowmore 12 Year	40%	20
□ Bowmore "Bicentenary For Fecchio & Frassa"	56.2%	475
□ Bowmore Gold Label OB 12 Year (1980s)	43%	135
□ Bowmore Gold Label "De Luxe" OB (1980s)	43%	135
Bruichladdich The Classic Laddie	50%	24
Bunnahabhain 12 Year	46.3%	28
□ Clynelish-Brora 12 Year Ainslie & Heilbron Ltd.	43%	250
□ Dalmore 8 Year Black Label (1970s)	43%	250
Dalwhinnie 15 Year	43%	22
□ Dufftown 13 Year James Macarthur's Reserve	59.6%	80
□ Glen Avon 5 Year Fine & Old	40%	80

□ Glen Grant 10 Year (1958)	45%	250
□ Glendronach 19 Year "The Birds Series" (1990)	43%	390
□ Glenfiddich 8 Year "Straight Malt" (1960s)	43%	305
Glenfiddich 12 Year	40%	28
Glenfiddich 15 Year Solera Reserva	40%	32
Glenfiddich 21 Year	40%	76
Glenlivet 12 Year	40%	22
Glenlivet 18 Year	43%	48
□ Glenlivet "Special Export Reserve" George & J.G. Smith Ltd	43%	250
□ Glenkeith-Glenlivet 12 Year "The Flower Series" Duthie for Samaroli (1969)	46%	250
□ Glenmorangie "Pure Old" Sherry Cask Finish (1963)	43%	445
□ Glenmorangie Single Barrel Vintage Cask (1994)	46%	265
Glenmorangie Original	40%	20
□ Highland Park 12 Year "From The Islands Of Orkney"	43%	195
Highland Park 12 Year	43%	26
Highland Park 18 Year	43%	46
□ Inchgower "From The House Of Bells" 12 Year	43%	135
Lagavulin 16 Year	43%	28
Laphroaig 10 Year	40%	20
□ Laphroaig 15 Year (2005)	43%	145
□ Longmorn 16 Year Natural Cask Strength	58.5%	300
□ Macallan 8 Year (1970s)	43%	175
□ Macallan 10 Year (1970s)	43%	190
□ Macallan 12 Year (1970s)	43%	165
Macallan 12 Year	43%	28
Macallan 18 Year	43%	60
□ Macallan 25 Year "Anniversary Malt Series" (1991)	43%	445
□ Macallan 30 Year Blue Label Sherry Oak	43%	505
□ Macallan 12 Year "Official Whisky Of Bicentenary Of French Revolution" (1989)	43%	255
□ Macallan 25 Year "Royal Marriage 1948 & 1961 Charles & Diana" (1981)	43%	475
□ Macallan "Special Reserve" 1st Edition Label (1985)	43%	505
□ Macallan Vintage 18 Year (1956)	46%	550
□ Macallan Vintage 18 Year (1957)	46%	550
□ Macallan Vintage 18 Year (1958)	46%	550
□ Macallan Vintage 18 Year (1959)	46%	550
□ Macallan Vintage 18 Year (1960)	46%	550

□ Macallan Vintage 18 Year (1961)	46%	475
□ Macallan Vintage 18 Year (1962)	46%	475
□ Macallan Vintage 18 Year (1963)	43%	475
□ Macallan Vintage 18 Year (1964)	43%	475
□ Macallan Vintage 18 Year (1965)	43%	475
□ Macallan Vintage 18 Year (1966)	43%	475
□ Macallan Vintage 18 Year (1967)	43%	460
□ Macallan Vintage 18 Year (1968)	43%	460
□ Macallan Vintage 18 Year (1969)	43%	460
□ Macallan Vintage 18 Year (1970)	43%	460
□ Macallan Vintage 18 Year (1971)	43%	460
□ Macallan Vintage 18 Year (1972)	43%	445
□ Macallan Vintage 18 Year (1973)	43%	445
□ Macallan Vintage 18 Year (1974)	43%	445
□ Macallan Vintage 18 Year (1975)	43%	445
□ Macallan Vintage 18 Year (1976)	43%	360
□ Macallan Vintage 18 Year (1977)	43%	360
□ Macallan Vintage 18 Year (1978)	43%	360
□ Macallan Vintage 18 Year (1979)	43%	360
□ Macallan Vintage 18 Year (1980)	43%	360
□ Macallan Vintage 18 Year (1985)	43%	300
□ Macallan Vintage 18 Year (1986)	43%	300
□ Milburn 11 Year "The Flower Series" Duthie For Samaroli (1970s)	46%	250
Mortlach 15 Year	43%	32
Oban 14 Year	43%	24
Old Malt Arran 1996 18 Year	50%	44
Old Pulteney 17 Year	46%	35
Springbank 15 Year	46%	28
□ Springbank 5 Year "Black Label" (1970s)	43%	230
□ Springbank 15 Year "Black Label" (1970s)	46%	265
□ Strathisla 37 Year "Licensed Bottling" Gordon & MacPhail (2011)	43%	350
□ Strathisla-Glenlivet 15 Year (Bottled For Pinerolo Italy)	40%	245
Talisker 10 Year	45.8%	20
Talisker 18 Year	45.8%	40
□ Talisker 30 Years Old (1953)	40%	300
□ Teaninich 22 Years "The Bouquet Series" Samaroli (1959)	46%	420

BRANDY

Laird's 100 Proof Straight Applejack	40%	22
Laird's Jersey Lightning White Apple Brandy	40%	20
Castarde VSOP	40%	22
Clés des Ducs Millésimé 1992 Armagnac	40%	32
L'Encantada 25 Year Old Armagnac	49.5%	26
L'Encantada Extra White Armagnac	54.8%	22
Chateau de Laubade 1991 Armagnac	40%	34
Cardenal Mendoza Brandy de Jerez	40%	20
Comte Louise de Lauriton 2004 Domfrontais Calvados	40%	24
Christian Drouin 15 Year Calvados	40%	26
Christian Drouin 1996 Pays D'Auge Calvados	42%	34
Daron Fine Calvados	40%	18
Daron XO Calvados	40%	22
Baron Otard VSOP Cognac	40%	22
Baron Otard XO Cognac	40	58
Hennessy XO Cognac	40%	70
□ Hennessy VSOP Cognac (1960s)	42%	187
□ Hennessy XO Cognac (1970s)	40%	230
Hine Cigar Reserve Cognac	40%	50
Martell Cordon Bleu Cognac	40%	60
□ Martell VOP "3 Stars" Cognac (1960s)	40%	205
Pierre Ferrand 1840 Cognac	45%	18
Pierre Ferrand Abel 45 Year Cognac	40%	80
Pierre Ferrand Réserve 20 Year Cognac	40%	32
□ Remy Martin Fine Champagne VSOP Cognac (1960s)	40%	225
□ Remy Martin Louis XIII Cognac (1980s)	40%	360
Remy Martin VSOP Cognac	40%	18
Remy Martin XO Cognac	40%	58
Luxardo Kirsch Eau de Vie Brandy	40%	18
Luxardo Slivovitz Plum Brandy	40%	18

Luxardo Williams Pear Brandy	40%	18
St. George Raspberry Eau de Vie Brandy	40%	20
Cocchi Grappa	40%	18
Nardini Riserva Grappa	50%	20
Waqar Pisco	40%	20
BarSol Pisco	41.3%	18

SUGARCANE



Leblon Cachaca	40%	16
Bacardi 8 Rum	40%	22
Banks 5 Year Rum	43%	18
Brugal 1888 Ron Gran Reserva Familiar Rum	40%	24
Caña Brava Rum	41.2%	16
Diplomático Ambassador Rum	47%	48
Diplomático Mantuano Rum	40%	18
Diplomático Reserva Exclusiva Rum	40%	20
Diplomático Single Vintage 2004 Rum	43%	30
Gosling's Black Seal Rum	40%	18
Havana Club 3 Year Rum	40%	20
Havana Club 7 Year Rum	40%	20
Kill Devil 14 Year Barbados Four Square 2001 Rum	46%	40
Kill Devil 10 Year Belize Travellers 2005 Rum	46%	36
Mount Gay Black Barrell Rum	43%	16
Plantation 3 Stars Rum	41.2%	16
Plantation Grande Réserve 5 Year Rum	40%	16
Plantation Original Dark Rum	40%	16
Plantation Jamaica 2002 Single Island Rum	40%	20
Plantation "Proof & Co. Private Cask" Panama 8 Year Rum	40%	22
Ron Zacapa Centenario 23 Rum	40%	20
Ron Zacapa XO Solera Gran Reserva Especial Rum	40%	40
Wray & Nephew Overproof Rum	40%	26

Foursquare Spiced Rum	37.5%	18
Koko Kanu Coconut Rum	37.5%	18
Plantation Pineapple Stiggin's Fancy Rum	40%	18
The Kraken Spiced Rum	40%	18

AGAVE



Alipus San Andres Mezcal	44%	20
Alipus San Juan del Rio Mezcal	47.9%	18
Del Maguey Vida Mezcal	42%	18
Del Maguey Chichicapa Mezcal	46%	26
Derrumbes Michoacan Mezcal	45.7%	22
Los Siete Misterios Espadin Mezcal	46.5%	22
Los Siete Misterios Tobala Mezcal	47%	28
Los Danzantes Añejo Mezcal	43%	24
Los Danzantes Arte 2014 Mezcal	47%	22
Los Danzantes Reposado Mezcal	43%	20
Montelobos Joven Mezcal	43.2%	22
Pierde Almas Espadin Mezcal	50.9%	22
Pierde Almas Wild Tepextate Mezcal	55%	32
ArteNOM 1146 Añejo Tequila	40%	20
ArteNOM 1414 Reposado Tequila	40%	18
ArteNOM 1549 Organic Blanco Tequila	40%	18
Don Fulano Anejo Tequila	40%	22
Don Fulano Anejo Tequila	50%	20
Don Fulano Blanco Tequila	40%	20
Don Fulano Reposado Tequila	40%	20
Don Julio Reposado Tequila	57%	30
Don Julio 1942 Tequila	38%	38
Fuenteseca 12 Year Tequila	45%	70
Ocho Reposado Tequila	40%	18
Patrón Silver Tequila	40%	20
Tapatio Blanco Tequila	40%	16
La Venenosa Raicilla Costa	45.5%	26

VODKA



Absolut Elyx Vodka	42.3%	24
Aylesbury Duck Vodka	40%	16
Belvedere Vodka	40%	20
Grey Goose Vodka	40%	20
Stolichnaya Elit Vodka	40%	24
Tito's Vodka	40%	18

ABSINTHE



Pernod Absinthe	68%	22
St. George Verte Absinthe	60%	26
Zufanek Absinthe	70%	26
Tempus Fugit Duplais Swiss Absinthe Blanch	60%	26
Tempus Fugit Duplais Swiss Absinthe Verte	68%	26

VERMOUTH



Cinzano 1940s Dry Vermouth	16%	120
La Quintinye Royal Extra Dry Vermouth	17%	14
Mancino Secco Dry Vermouth	18%	14
Martini Extra Dry Vermouth	15%	12
Martini & Rossi 1970s Dry White Vermouth	18.5%	49
Noilly Prat Dry Vermouth	18%	12
Noilly Prat 1930s Dry Vermouth	16%	120
Noilly Prat 1970s Extra Dry Vermouth	18%	120

Cocchi Americano Vermouth	16.5%	14
Cocchi Americano Rosa Vermouth	16.5%	14
Lillet Blanc Vermouth	17%	14
La Quintinye Royale Blanc Vermouth	16%	14
Mancino Bianco Ambrato Vermouth	16%	14
Carpano Antica Formula Vermouth	16.5%	16
Cocchi di Torino Vermouth	16%	14
La Quintinye Royale Rouge Vermouth	16.5%	14
Mancino Rosso Amaranato Vermouth	17%	14
Martini Rosso Vermouth	15%	12
Martini & Rossi 1940s Red Vermouth	16%	115
Martini Riserva Speciale Rubino Vermouth	18%	14
Punt e Mes Vermouth	16%	12

APERITIF



Aperol	11%	14
Campari	25%	14
Campari 1960s	25%	72
Pernod	40%	18
Suze Gentiane	15%	14
Linie Aquavit	41.5%	22

DIGESTIF

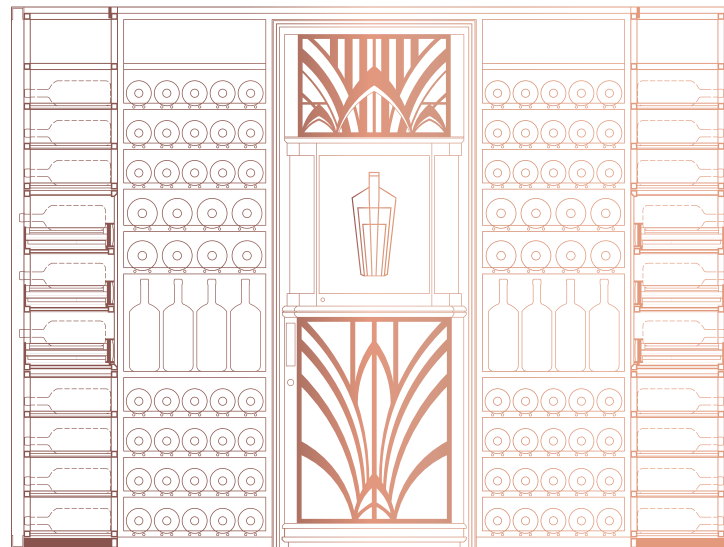


Amaro Montenegro	23%	14
Averna	29%	14
Becherovka	38%	14
Branca Menta	28%	14
Cynar	16.5%	14
Fernet Branca	39%	14

LIQUEUR

Amaretto Disaronno	28%	16
Bols Creme de Menthe	28%	15
Benedictine	40%	16
Benedictine 1970s	35%	34
Bentianna	13%	16
Chartreuse Green	47%	18
Chartreuse Yellow	40%	17
Chartreuse V.E.P. Green	54%	30
Chartreuse V.E.P. Yellow	42%	30
Cointreau	40%	16
Drambuie	40%	16
Drambuie 1970s	40%	34
Ferrand Dry Curaçao	40%	18
Grand Marnier	40%	18
Galliano	42.3%	15
Luxardo Albicocca Apricot Brandy	30%	15
Luxardo Limoncello	27%	16
Luxardo Maraschino Liqueur	32%	15
Luxardo Sambuca Dei Cesari	38%	15
Luxardo Sangue Morlacco Cherry Brandy	30%	15
Mathilde Cassis Liqueur	16%	16
Mathilde Pêche Liqueur	18%	15
Mathilde Poire Liqueur	18%	15
Picon Biere a L'Orange	18%	15
Pimm's No. 1	25%	16
St. Germain Elderflower Liqueur	20%	16
St. George Raspberry Liqueur	20%	16
St. George Spiced Pear Liqueur	20%	15
Tia Maria Coffee Liqueur	20%	16
Vintage Orange Curaçao 1930s	25%	160

THE ATLAS CHAMPAGNE COLLECTION



Champagne; a sparkling wine produced adhering to strict regulations and exclusively from the regions of Champagne, France. The Comité Interprofessionnel du vin de Champagne (CIVC) is the governing body for all the wines from Champagne. They have developed a comprehensive set of rules for the production of Champagne, which are regarded as the strictest in the world - thus, every bottle of Champagne is of a guaranteed quality and a specific profile that is unlike any other sparkling wine in the world.



Champagne is celebrated for its versatility and its romantic, rich culture. Extensively documented, Champagne's history is both wide and deep. Having a broad spectrum of styles which are made to be enjoyed in different occasions, Champagne has been present at the world's parties for hundreds of years.

We hear stories of Champagne in war time, on imperial dining tables and being the favoured tippie of the great figures of history. Perhaps it is the tiny bubbles percolating in a golden liquid that cause us to embrace all of the emotions ensconced in Champagne: love, hatred, happiness and tears.

Now is your time to enjoy the finest Champagnes the world has to offer. The ATLAS Champagne Collection is one of the largest in Asia. It has been carefully curated to bring out these sensations and stories through the finest wines from the Champagne region. Whether it is a special occasion or not, we are delighted to offer you our very favourite Champagnes to celebrate the joys in life.

The ATLAS Champagne Collection is arranged into four categories:

La Sélection: featuring beautiful Champagnes for all moments.

Le Terroir: a dedication and celebration of the 17 Grand Crus of Champagne, the single village releases that are at the heart of Champagne culture.

La Prestige: an extraordinary list of the most renowned Champagnes drawn from the Parkview Family Cellar and from the most iconic Champagne houses.

Les Collections: exclusive to ATLAS, an exceptionally rare selection of Champagne "collections," which are designed to be enjoyed as a complete sets, for the grandest of evenings.

Go ahead and explore the remarkable world of Champagne. Our wine team stands ready to assist you in your journey.

Jack Cheung, *Family Sommelier*

The ATLAS Champagne Collection On Date of Printing
301

La Sélection

- Blancs
- Rosés

Le Terroir – Montagne De Reims

- Ambonnay
- Beaumont-sur-Vesle
- Bouzy
- Louvois
- Mailly
- Puisieulx
- Sillery
- Verzenay
- Verzy

Le Terroir – Vallée De La Marne

- Aÿ
- Tours-sur-Marne

Le Terroir – Côte Des Blancs

- Avize
- Chouilly
- Cramant
- Le Mesnil-Sur-Oger
- Oger
- Oiry

Le Terroir – Mixed Grand Cru Villages

- Blancs
- Rosés

La Prestige

- Piper-Heidsieck
- Charles Heidsieck
- Krug
- Salon
- Dom Pérignon
- Pol Roger
- Louis Roederer
- Bollinger
- Taittinger
- Deutz
- G.H. Mumm
- Shipwreck Champagne

Les Collections

- Taittinger Collection
- Ulysse Collin Collection
- Jacques Selosse “Lieux-Dits” Collection

RARE & SPECIAL BOTTLES

The ATLAS Champagne Collection includes some genuine treasures, of which only one or two bottles are available. Because of the extraordinarily rare nature of these bottles, they will be crossed off once enjoyed by our guests. If your preferred Champagne is not currently available, please accept our most sincere apologies! We would be delighted to recommend a suitable alternative.

The □ symbol denotes special bottles from the Family Collection.

LA SÉLECTION

In La Sélection, we celebrate great diversity of Champagne, bringing you a wealth of styles to suit your mood and the occasion. There are famous Champagne houses represented here, with both vintage and non-vintage champagnes for you to choose from.

BLANCS

NON-VINTAGE

Diebolt-Vallois "Tradition"	NV	140
Geoffroy "Pureté" Brut Nature (d: 2015-11)	NV	140
Henri Dubois Brut	NV	140
Lelarge-Pugeot "Tradition" Premier Cru Extra-Brut	NV	140
Roger Coulon "Heri-Hodie Grande Tradition" Premier Cru	NV	140
Serge Mathieu "Cuvée Prestige"	NV	140
Diebolt-Vallois Blanc de Blancs	NV	145
Bruno Paillard "Première Cuvée" Extra-Brut (d: 2014-10)	MV	150
Geoffroy "Expression" Premier Cru (d: 2016-04)	NV	150
Philippe Gamet "Brut-Sélection" Blanc de Noirs	NV	150
Drappier "Zero" Brut Nature Blanc de Noirs (d: 2016-09)	NV	160
Etienne Calsac "L'échappée Belle" Premier Cru Extra Brut Blanc de Blancs	NV	160
Louis Roederer "Brut Premier"	NV	160
Drappier "Sans Soufre" Blanc de Noirs Brut Nature (d: 2016-05)	NV	165
Charles Heidsieck "Brut Réserve" (d: 2016)	NV	170
Gervais Gobillard Blanc de Blancs	NV	170
Tarlant "Zero" Brut Nature (d: 2014-09)	NV	170
Benoît Lahaye Blanc de Noirs Extra-Brut (d: 2016-10)	NV	180
Lelarge-Pugeot Blanc de Blancs Extra-Brut	NV	180
Philipponnat "Royale Réserve Brut" (d: 2016-02)	NV	180
Nominé Renard Blanc de Blancs	NV	185
Etienne Calsac "Les Rocheforts" Premier Cru Blanc de Blancs	NV	190
Fleury Blanc de Noirs	NV	190
Rosés de Jeanne / Cedric Bouchard "Côte de Val Vilaine" Blanc de Noirs (v: 2014 d: 2016-04)	NV	200
Jean-François Launay "Grain de Folie" Blanc de Blancs	NV	210
Philippe Gamet "Caractères" Extra-Brut	NV	210
Ruinart Blanc de Blancs	NV	210
Savart "L'Accomplie" Premier Cru Extra-Brut (d: 2017-03)	NV	210

Bérêche & Fils "Les Beaux Regards" Blanc de Blancs (v: 2012 d: 2016-03)	NV	220
Franck Pascal "Reliance" Brut Nature (d: 2014-10-02)	NV	220
Vouette & Sorbée "Fidèle" Blanc de Noirs (d: 2016-11-01)	NV	230
Billecart Salmon "Sous Bois"	NV	250
Drappier "Quattuor" Blanc de Blancs	NV	250
George Laval Cumières Premier Cru Brut Nature (d: 2016-12-06)	NV	270
Lanson "Extra Age" (d: 2016-06)	NV	270
Veuve Clicquot "Extra Old" Extra-Brut	NV	270
Emmanuel Brochet "Le Mont Benoit" Premier Cru Extra-Brut	NV	280
Tarlant "Cuvée Louis" Extra-Brut (d: 2014-07)	NV	290
Laherte Frères "Les Empreintes" Extra-Brut (d: 2012-03)	NV	300
Bérêche & Fils "Reflet d'Antan" (d: 2016-04)	NV	300
Krug "Grande Cuvée" 163 Edition	NV	380
Marie-Courtin "Efflorescence" Blanc de Noirs Extra-Brut	NV	400
Gosset "15 ans de Cave a Minima"	NV	400
Tarlant "BAM!" Brut Nature (d: 2014-11-11)	NV	420
□ David Léclapart "L'Apôtre" Premier Cru Blanc de Blancs Pas Dosé (v: 2009)	NV	450
Laherte-Frères "Les 7" Extra-Brut	NV	450
□ David Léclapart "L'Artiste" Premier Cru Blanc de Blancs Pas Dosé (v: 2010)	NV	500
□ David Léclapart "L'Astre" Premier Cru Blanc de Noirs Pas Dosé (v: 2011)	NV	500
Doyard "La Libertine" Doux	NV	580

VINTAGE

Serge Mathieu "Brut Millésime" Blanc de Noirs	2008	180
Lelarge Pugeot "Les Meuniers de Clémence" Premier Cru Extra-Brut	2010	180
Drappier "Millésime Exception" (d: 2016-01)	2012	180
Geoffroy "Volupté" Premier Cru (d: 2016-06)	2008	200
Deutz Blanc de Blancs	2004	210
Pierre Gimonnet "Oenophile" Blanc de Blancs Extra-Brut (d: 2017-02-22)	2008	210
Piper-Heidsieck	2008	210
Bruno Paillard "Assemblage" (d: 2012-03)	2004	230
Roger Coulon Blanc de Noirs Extra-Brut	2008	230
Chartogne-Taillet "Fiacre" (v: 2010)	2010	230
Laherte Frères "Les Vignes d'Autrefois" Blanc de Noirs Extra-Brut (d: 2011-01)	2007	240
Pierre Gimonnet "Grands Terroirs de Chardonnay" Blanc de Blancs (d: 2016-11-08)	2010	240
Nominé-Renard "Special Club"	2011	240
L. Aubry Fils "Le Nombre d'Or Campaniae Veteres Vites"	2013	240
Larmandier-Bernier "Terre de Vertus" Premier Cru Blanc de Blancs Brut Nature	2010	250
Chartogne-Taillet "Orizeaux" Blanc de Noirs Extra-Brut (v: 2011)	2011	250
Charles Heidsieck Millésime (d: 2015)	2005	260
Chartogne-Taillet "Les Beaux Sens" Blanc de Meunier Extra-Brut (v: 2011)	2011	260
Drappier "Grande Sendrée" (d: 2015-05)	2008	270

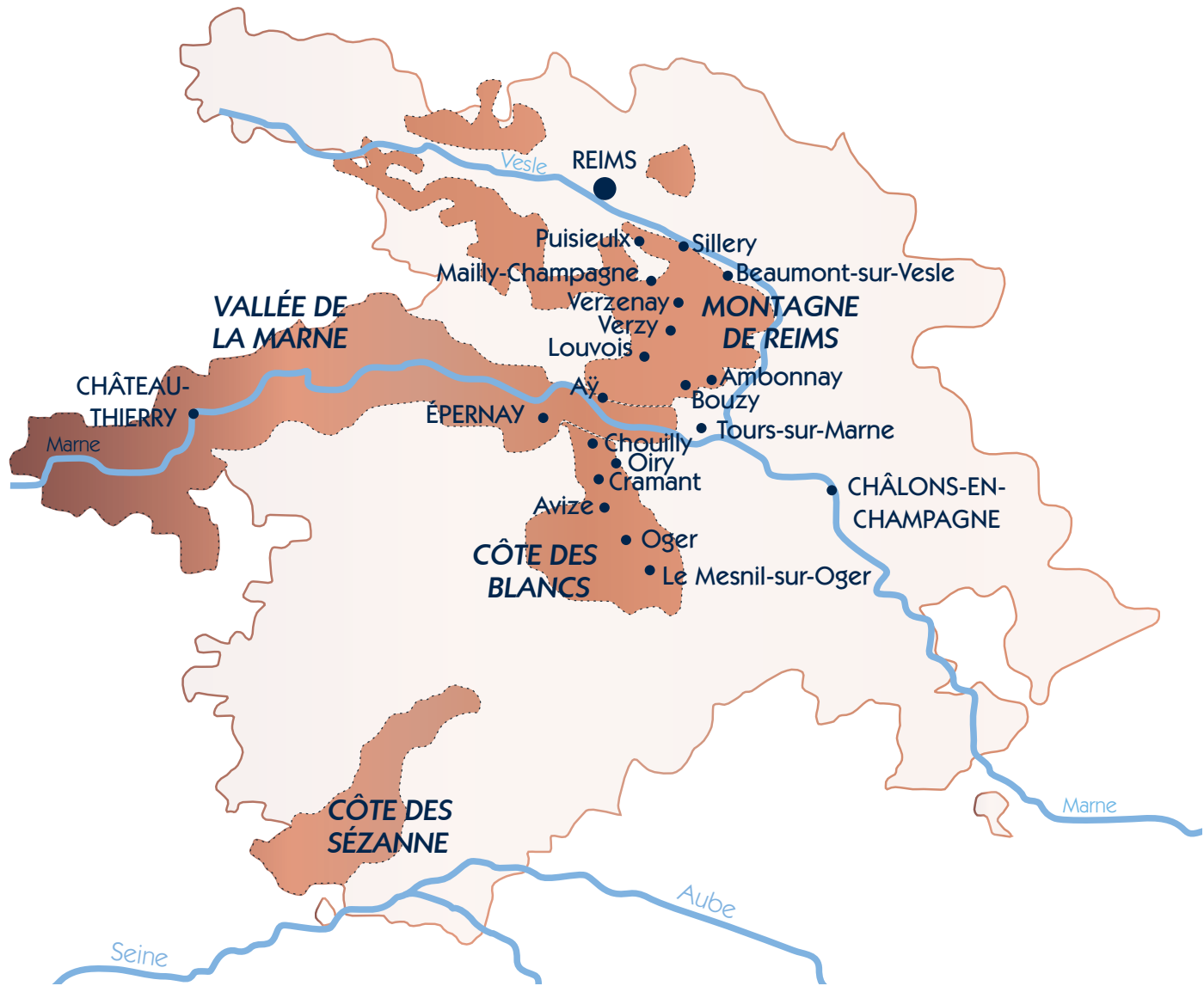
Philippe Gamet Millésime Brut Nature	2012	270
Gosset "Grand Millésime"	2006	280
Roses de Jeanne / Cedric Bouchard "Les Ursules" Blanc de Noirs	2011	280
Roses de Jeanne / Cedric Bouchard "Les Ursules" Blanc de Noirs	2014	280
Chartogne-Taillet "Chemin de Reims" Blanc de Blancs Extra-Brut	2010	290
Veuve Clicquot "La Grande Dame"	2004	300
Pol Roger Millésime	2006	300
Francis Boulard "Les Rachais" Blanc de Blancs Extra-Brut (d: 2015-03-07)	2008	300
Doyard "Clos de l'Abbaye" Premier Cru Blanc de Blancs Extra-Brut	2011	340
Pommery "Cuvée Louise"	2004	350
Duval-Leroy "Authentis Cumières" Premier Cru Blanc de Noirs	2003	390
Tarlant "La Vigne d'Or" Blanc de Meuniers Brut Nature (d: 2013-02-20)	2003	400
Vilmart & Cie "Coeur de Cuvée" Premier Cru (d: 2014-03)	2007	400
Barons de Rothschild Blanc de Blancs	2006	600
Boërl & Kroff "B de Boërl & Kroff" (d: 2011-11)	2000	1000

ROSÉS

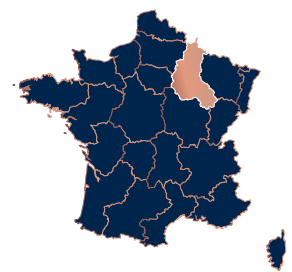


Philippe Gamet Rosé	NV	140
Diebolt-Vallois Rosé	NV	160
Drappier Rosé Brut Nature (d: 2016-08)	NV	170
Guy Charlemagne Rosé	NV	170
Roger Coulon "Rosélie Rosé de Saignee" Premier Cru	NV	180
Bruno Paillard "Rosé Première Cuvée" Extra-Brut (d: 2014-10)	MV	190
Etienne Calsac "Rosé de Craie"	NV	190
Pommery "Brut Rosé Royal"	NV	190
Ruinart Rosé	NV	210
Philipponnat "Royale Réserve Rosé" (d: 2015-09)	NV	210
Pierre Péters "Rosé for Albane"	NV	210
Savart "Bulle de Rosé" Premier Cru	NV	210
Larmandier-Bernier "Rosé de Saignée" Premier Cru Extra-Brut	NV	250
Laherte Frères "Les Beaudiers" Rosé de Saignée Extra-Brut (d: 2012-01)	NV	300
Bollinger Rosé	2006	360

CHAMPAGNE



 Grand Cru Vineyards



LE TERROIR

In this section, we adhere to the "échelle des crus" system that was developed in the mid-1900s. This system divides the villages of Champagne into three levels of quality. From the highest tier, we present the 17 Grand Crus here, which make up just nine percent of the villages in the Champagne region.

MONTAGNE DE REIMS



AMBONNAY

Paul Déthune Rosé (d: 2014-08)	NV	170
Eric Rodez "Cuvée des Crayères" (d: 2015-05)	NV	170
Marguet Ambonnay	2010	210
Paul Déthune "Cuvée Prestige - Princesse des Thunes" (d: 2013-10)	NV	240
Eric Rodez Blanc de Noirs (d: 2016-05)	NV	270
Eric Rodez Rosé (d: 2016-05)	NV	300
H. Billiot & Fils "Cuvée Laetitia" (d: 2013-10-21)	NV	340
Marie-Noelle Ledru "Cuvée du Goulté" Blanc de Noirs Extra-Brut	2012	360
Marie-Noelle Ledru Millésime Brut Nature	2008	380
Egly-Ouriet "Les Crayères" Blanc de Noirs	NV	380
Paul Déthune "Cuvée à l'Ancienne" (d: 2012-01)	2006	450
Marguet Père & Fils "Les Crayères" Extra-Brut (d: 2014-07)	2009	600
Marguet Père & Fils "Les Crayères" Extra-Brut (d: 2016-03)	2011	600
Marguet Père & Fils "Les Bermonts" Blanc de Blancs Extra-Brut (d: 2014-12)	2010	600
Marguet Père & Fils "La Grande Ruelle" Blanc de Noirs Extra-Brut (d: 2016-03)	2011	600
Marguet Père & Fils "Le Parc" Blanc de Blancs Extra-Brut (d: 2016-03)	2011	600

BEAUMONT-SUR-VESLE

Paul Sadi "Clos Virgile"	2012	290
--------------------------	------	-----

BOUZY

Pierre Paillard Millésime (d: 2014-07)	2004	200
Baron d'Auvergne "La Marguerite en Folie"	NV	260
Pierre Paillard "Les Maillerettes" Blanc de Noirs Extra-Brut (d: 2016-04)	2010	300
Pierre Paillard "Les Mottelettes" Blanc de Blancs Extra-Brut (d: 2016-03)	2010	300
Duval-Leroy "Authentis Bouzy" Blanc de Noirs Brut Nature	2005	350
Camille Savès "Cuvée Anaïs Jolicoeur"	2012	350
Camille Savès "Les Loges" Blanc de Noirs	NV	400
Brice "Bouzy Millésime"	2008	400
Benoît Lahaye "Le Jardin de la Grosse Pierre" Brut Nature (d: 2016-02)	2011	500

LOUVOIS

Guy de Chassey "Cuvée Antide"	NV	300
-------------------------------	----	-----

MAILLY

Ernest Remy Blanc de Noirs	NV	300
Ernest Remy Blanc de Noirs Demi-Sec	NV	300
Champagne Mailly "L'Intemporelle"	2007	440

PUISIEULX

François Secondé "Les Petites Vignes"	NV	350
---------------------------------------	----	-----

SILLERY

François Secondé Blanc de Blancs	2008	220
François Secondé "La Loge" Blanc de Noirs	NV	270

VERZENAY

Bernard Hatte "Cuvée Benjamin"	2012	240
Godmé Père et Fils Brut Millésimé	1999	350

VERZY

Louis de Sacy "Grand Soir"	2003	450
----------------------------	------	-----

VALLÉE DE LA MARNE

Aÿ

Gaston Chiquet "Blanc de Blancs d'Aÿ" (d: 2016-03)	NV	220
Philipponnat "Le Léon" Blanc de Noirs Extra-Brut (d: 2015-02)	2006	550
Jacquesson "Vauzelle Terme" Blanc de Noirs Extra-Brut (d: 2013-02-13)	2004	800
□ Henri Giraud "Fût de Chêne"	1999	1000
□ Jacques Selosse Lieux-Dits "La Côte Faron" Blanc de Noirs Extra-Brut (d: 2014-03-04)	NV	1300
□ Henri Giraud Blanc de Blancs	2004	1400
□ Henri Giraud "Argonne" Blanc de Blancs	2002	1600

TOURS-SUR-MARNE

Lamiable "Cuvée Heliades" Rosé	NV	350
Lamiable "Les Meslaines" Blanc de Noirs	2009	350
Lamiable "Cuvée Heliades"	2011	360
Lamiable "Cuvée Pheerie" Blanc de Blancs	2008	400
Harlin Pere et Fils "Cuvée Ephémère" Blanc de Noirs Extra-Brut (d: 2016-04)	2010	400

CÔTE DES BLANCS

AVIZE

Franck Bonville "Camille Bonville" Blanc de Blancs	NV	180
Varnier-Fannièrè "Cuvée St-Denis" Blanc de Blancs	NV	260
Pierre Callot "Clos Jacquin" Blanc de Blancs	NV	350
Agrapart & Fils "Avizoise" Blanc de Blancs Extra-Brut (d: 2015-02)	2008	400
Larmandier-Bernier "Les Chemins d'Avize" Blanc de Blancs Extra-Brut	2010	410
Jacquesson "Champ Cain" Blanc de Blancs Extra-Brut (d: 2013-02-27)	2004	900

CHOUILLY

Jack Legras "Cuvée Le Mont Aigu" Blanc de Blancs	NV	340
Lenoble "Les Aventures" Blanc de Blancs	NV	350
R&L Legras "Saint-Vincent" Blanc de Blancs	2000	350
Veuve J. Lanaud "Les Prêtresses" Blanc de Blancs (d: 2016-07-30)	2008	360

CRAMANT

Diebolt-Vallois "Prestige" Blanc de Blancs	NV	200
G.H. Mumm "Mumm de Cramant" Blanc de Blancs (d: 2014-02)	NV	250
Larmandier-Bernier "Vieille Vigne de Cramant" Blanc de Blancs Extra-Brut	2006	260
Bonnaire "Prestige" Blanc de Blancs	NV	350
Diebolt-Vallois "Fleur de Passion" Blanc de Blancs	2007	460

LE MESNIL-SUR-OGER

Guy Charlemagne "Mesnillésime" Blanc de Blancs	2004	280
Pierre Moncuit "Nicole Moncuit" Vieille Vignes Blanc de Blancs	2004	290
Pierre Moncuit "Nicole Moncuit" Vieille Vignes Blanc de Blancs	2005	320
Bruno Paillard Le Mesnil Blanc de Blancs (d: 2003-12)	1995	400
De Sousa "Cuvée des Caudalies" Blanc de Blancs (d: 2011-12-16)	2005	420
Bruno Paillard Le Mesnil Blanc de Blancs (d: 2015-02)	1990	500
Pierre Péters "Cuvée Spéciale - Les Chétillons" Blanc de Blancs	2002	600

OGER

Jean Milan "Terres de Noël" Blanc de Blancs	2009	250
Pierre Gimonnet "Special Club" Blanc de Blancs	2012	290
Franck Bonville "Les Belles Voyes" Blanc de Blancs	NV	350
Claude Cazals "Clos Cazals" Blanc de Blancs Extra-Brut	2002	450

OIRY

Christophe Martin Blanc de Blancs	2010	310
Suenen Blanc de Blancs Extra-Brut	NV	380

MIXED GRAND CRU VILLAGES



BLANCS

Benoît Lahaye Brut Nature (d: 2016-10)	NV	160
Benoît Lahaye Millésime Extra-Brut (d: 2016-10)	2011	175
Delamotte Blanc de Blancs	NV	180
Petit le Brun et Fils Blanc de Blancs	NV	180
Chapuy Blanc de Blancs Millésime	2008	190
De Sousa "Réserve" Blanc de Blancs	NV	190
Lancelot-Royer "Cuvée des Chevaliers" Blanc de Blancs	NV	190
Pierre Péters "Réserve Privée" Blanc de Blancs	NV	190
Pierre Péters Blanc de Blancs Extra-Brut	NV	190
Chapuy "Livree Noire"	2006	200
Pierre Péters "Cuvée de Réserve" Blanc de Blancs	NV	200
Bruno Paillard Blanc de Blancs Extra-Brut (d: 2014-03)	MV	210
De Sousa "Mycorhize" Blanc de Blancs Extra-Brut	NV	220
Lallier "Millesimés"	2005	230
Delamotte Blanc de Blancs	2007	240
Petit et Bajan "Nuit Blanche" Blanc de Blancs (d: 2017-05-03)	NV	270
Dhondt-Grellet "Prestige du Moulin" Blanc de Blancs	NV	280
Ayala Blanc de Blancs (d: 2015-09)	2008	290
Duval-Leroy Blanc de Blancs	2006	290
Pierre Péters "Réserve Oubliée" Blanc de Blancs	NV	290
Taittinger "Prélude"	NV	290
Egly-Ouriet "Vieillessement Prolongé" Extra-Brut	NV	300
Philipponnat "Cuvée 1522" (d: 2016-03)	2006	300
Suener "C+C" Blanc de Blancs Extra-Brut	NV	380
Ayala "Cuvée Perle d'Ayala"	2005	390
Delamotte Blanc de Blancs	2002	400
Suener Blanc de Blancs Extra-Brut	2009	450
Bruno Paillard "Nec Plus Ultra"	1995	490
Bruno Paillard Blanc de Blancs (d: 2013-04)	2004	500
Delamotte "Collection" Blanc de Blancs (Magnum)	1970	3500

ROSÉS

Pierre Paillard Rosé (d: 2014-11)	NV	180
Marguet Père & Fils "Shaman 12" Rosé Extra-Brut	NV	210
Petit et Bajan "Nymphaea" Rosé (d: 2017-05-03)	NV	300
Egly-Ouriet Rosé	NV	320
Bruno Paillard "Nec Plus Ultra" Rosé (d: 2015-07)	2003	550

LA PRESTIGE

This section shares our family's philosophy about being a patient and persistent collector of some of the finest things in the world. This value is shared by our family and many of the traditional Champagne families. Here we present truly extraordinary Champagnes from the Parkview Family Cellar and some of the greatest Champagne houses. "Prestige Cuvée" is the word used by the houses to describe their, and therefore our, best offerings.

PIPER-HEIDSIECK



Credited as a Champagne worthy of a queen, Marie Antoinette was the first brand ambassador of Piper-Heidsieck back in 1785. Cuvée Rare was created in 1885 to celebrate its centennial with a bottle designed by Pierre-Karl Fabergé, star jeweler of Russian Tsar Alexander III. Piper today still gives the same dash of seduction it has since 1785.

Piper-Heidsieck Cuvée Réserve Essentiel ATLAS	NV	160
Piper-Heidsieck Rare	2002	380

CHARLES HEIDSIECK



In 1851, at the young age of 29, Charles Heidsieck founded the house bearing his own name. Now owned by the EPI group since 2011, the house is gaining its former glory as one of the most highly esteemed champagne houses of the century. Headed by Cellarmaster Cyril Brun, these champagne are characterized by freshness, power, richness and elegance.

Charles Heidsieck "Blanc de Millénaires" Blanc de Blancs	1995	450
--	------	-----

KRUG

Behind every precious drop of Krug stands the dream of a visionary. One man who, long before others, understood that the essence of Champagne is pleasure. Over 170 years ago, Joseph Krug broke with convention to follow this vision. In doing so, he created some of most generous expressions of Champagne each year. This tradition continues to this day.

□ Krug "Clos d'Ambonnay" Grand Cru Blanc de Noirs	1996	7000
□ Krug "Clos d'Ambonnay" Grand Cru Blanc de Noirs	2000	8000
□ Krug "Clos du Mesnil" Grand Cru Blanc de Blancs	1988	6500
□ Krug "Clos du Mesnil" Grand Cru Blanc de Blancs	1989	5000
□ Krug "Clos du Mesnil" Grand Cru Blanc de Blancs	1990	4900
□ Krug "Clos du Mesnil" Grand Cru Blanc de Blancs	1992	4500
□ Krug "Clos du Mesnil" Grand Cru Blanc de Blancs	1998	5000
□ Krug "Clos du Mesnil" Grand Cru Blanc de Blancs	2002	2400
Krug "Grande Cuvée" 166 Ème Édition	MV	430
Krug	2000	780
Krug	2004	580

SALON

Salon was created as a private label, from similar beginnings as the more famous Cristal. Since its first vintage in 1905, Salon was shared among private clients and friends of the visionary Eugène Aimé Salon, who believed that the Chardonnay in Le-Mesnil-Sur-Oger could make fine and elegant Champagnes without blending with Pinot Noir and Pinot Meunier. And so the idea of Blanc de Blancs was born.

□ Salon "S" Le Mesnil Grand Cru Blanc de Blancs	1971	9000
□ Salon "S" Le Mesnil Grand Cru Blanc de Blancs	1982	5800
□ Salon "S" Le Mesnil Grand Cru Blanc de Blancs	1990	5000
□ Salon "S" Le Mesnil Grand Cru Blanc de Blancs	1995	3500
□ Salon "S" Le Mesnil Grand Cru Blanc de Blancs	1996	3500
□ Salon "S" Le Mesnil Grand Cru Blanc de Blancs	1997	2000
Salon "S" Le Mesnil Grand Cru Blanc de Blancs	1999	2000
Salon "S" Le Mesnil Grand Cru Blanc de Blancs	2006	900

DOM PÉRIGNON

First released in 1921, during the dawn of the Art Deco era, this Champagne bears the same name as the famous Benedictine monk who arguably created Champagne. One of the first “Cuvée” concepts, it was soon destined to be one of the blue bloods of Champagne.

Dom Pérignon "Chefs de Cave Legacy Edition"	2008	850
□ Dom Pérignon “Plénitude Troisième (P3)”	1971	8000
□ Dom Pérignon “Réserve de l’Abbaye”	1990	4000
□ Dom Pérignon	1947	6000
□ Dom Pérignon	1964	3000
□ Dom Pérignon	1969	3000
□ Dom Pérignon	1971	2900
□ Dom Pérignon	1973	2800
□ Dom Pérignon	1976	2400
Dom Pérignon	2000	800
□ Dom Pérignon	2009	450
Dom Pérignon (Jeroboam)	2000	6000
Dom Pérignon Rosé	1996	1900

POL ROGER

The relationship of Pol Roger and the beloved Sir Winston Churchill was never a commercial or superficial one. Pol Roger had been the favourite champagne of Churchill since 1908 and had even befriended Madame Odette Pol-Roger at a party at the British Embassy in Paris in 1944. In 1984 Pol Roger honored this legendary relationship with the release of the Pinot Noir-dominant Cuvée Sir Winston Churchill.

Pol Roger “Cuvée Sir Winston Churchill”	1979	3500
Pol Roger “Cuvée Sir Winston Churchill”	1988	3000
Pol Roger “Cuvée Sir Winston Churchill” (Magnum)	1999	2000
□ Pol Roger “Cuvée Sir Winston Churchill” (Magnum)	2002	1500
Pol Roger “Cuvée Sir Winston Churchill” (Magnum)	2004	1700
Pol Roger “Cuvée Sir Winston Churchill” (Jeroboam)	1988	12000

LOUIS ROEDERER

Being the favourite house of Tsar Alexander II, Louis Roederer technically created the world's first "Prestige Cuvée" for the paranoid Tsar in 1876. Living in fear of assassination by poisons and bombs, he ordered a Champagne in clear bottles and with a flat bottom, to be made and served for the famous Three Emperors Dinner at Café Anglais in Paris. The first commercially available vintage of Cristal was 1945, many decades after the original release. Yet the famous story of its founding remains part of Champagne's rich history.

□ Louis Roederer "Cristal"	1964	8000
□ Louis Roederer "Cristal"	1966	6000
□ Louis Roederer "Cristal"	1976	4900
□ Louis Roederer "Cristal"	1981	3000
□ Louis Roederer "Cristal"	1983	2800
□ Louis Roederer "Cristal"	1993	1000
□ Louis Roederer "Cristal"	2000	1200
□ Louis Roederer "Cristal"	2009	700

BOLLINGER

Known as the famed James Bond Champagne, Bollinger is one of most respected Champagne houses. Bollinger's famous Prestige Cuvée, "La Grande Année" is not the only sought-after label from this house, The "Vieilles Vignes Françaises" made from parcels of ungrafted Pinot Noir and the late disgorgement "Récemment Dégorgé (R.D.)" label are also on the top of connoisseurs' lists.

□ Bollinger "Récemment Dégorgé (R.D.)" Extra Brut (<i>Silver Jubilee Edition</i>)	1966	5000
□ Bollinger "Récemment Dégorgé (R.D.)" Extra Brut	1979	2000
□ Bollinger "Récemment Dégorgé (R.D.)" Extra Brut	1981	1800
□ Bollinger "Récemment Dégorgé (R.D.)" Extra Brut (Magnum)	1973	4500
□ Bollinger "Vieilles Vignes Françaises" Blanc de Noirs	1986	6000
□ Bollinger "Vieilles Vignes Françaises" Blanc de Noirs	1989	6000
□ Bollinger "Vieilles Vignes Françaises" Blanc de Noirs	1990	8000
□ Bollinger La Grande Année	2007	500

TAITTINGER

The name Taittinger is very much associated with the French political world. Pierre Taittinger, was a powerful politician and a champagne distributor. Pierre restored the House of the Counts of Champagne in Reims during his lifetime, before it was unfortunately destroyed by the Germans during the World War II. The Prestige Cuvée of Taittinger was created to commemorate the powerful reign of the Counts of Champagne during the Medieval Ages.

Taittinger "Comte de Champagne" Blanc de Blancs	1982	2100
Taittinger "Comte de Champagne" Blanc de Blancs	2006	500
□ Taittinger "Comte de Champagne" Blanc de Blancs (Magnum)	1986	4000

DEUTZ

Established in 1838, Deutz has a glorious past. Being the favourite Champagne of the English in the 1900s, Deutz exported more than 600,000 bottles to the United Kingdom by then. The company is a living fossil, which is a testament to the glorious history of Champagne as one of the most celebrated drinks in the world. Nowadays Deutz is a rare find, especially its prestigious tribute to the owner, the Cuvée William Deutz.

Deutz "Cuvée William Deutz"	1961	3000
Deutz "Cuvée William Deutz"	2002	600
□ Deutz "Cuvée William Deutz" (Jeroboam)	1990	7000
Deutz "Cuvée Amour de Deutz"	1999	600
Deutz "Cuvée Amour de Deutz"	2005	700

G. H. MUMM

Established in 1827, this German family created the famous "Cordon Rouge", a silk ribbon on each bottle of Champagne, which became iconic in the Champagne bottle designs. By 1904, Mumm became the official supplier of Champagne to British royalty. Mumm's prestige cuvée is named after the visionary man who led Champagne Mumm into quality and international prestige in the 20th Century.

□ G.H. Mumm "Cuvée René Lalou"	1973	1800
G.H. Mumm "Cuvée René Lalou"	1976	1800

SHIPWRECK CHAMPAGNE

On 26 October 1916, amidst the devastation of the World War I, a small Swedish smuggling schooner named “Jönköping” was being quietly loaded with contraband in the city of Gävle in the south of Sweden. Among the packing list was a modest 3,000 bottles of Champagne, tasted, liked and ordered by Tsar Nikolai II, the last Emperor of the Russian Empire. It was Jönköping’s tenth smuggling journey of the year.

Everything seemed to go smoothly, with none of the crew suspecting that this trip would be their last.

The day was 3 November of 1916, when a German U-22 submarine intercepted this unlucky Jönköping off the Finnish coast and sank it along with its haul of precious contraband. The Champagnes together with the Jönköping, since then, quietly slept at a depth of 64 meters under the sea, for the next 82 years.

Jönköping was salvaged in 1998, its cargo held the 1907 Heidsieck & Co. Monopole “Goût Américain”, a Champagne which was also served on the famous Titanic (ironically also sunk in 1912). Fortunately, due to the perfect pressure and temperature deep in the Baltic sea, many of the original 3,000 Champagne bottles made it through this 90-year transcendence of time safely, with corks intact and no leakage.

□ Heidsieck & Co. Monopole “Goût Américain”	1907	190,700
Heidsieck & Co. Monopole “Goût Américain” Extra Dry	NV	170

LES COLLECTIONS

In this section we feature some of the core collections which our family carefully purchased and curated over the years. These treasured collections reach a synergy when presented as a series and will bring you a unique experience.

We would like to share the stories they want to tell, like chapters of a grand novel, only complete when they are put together.

TAITTINGER COLLECTION



"Imagine a bottle of Champagne as a canvas. Imagine that the wine it contains is a muse. Then introduce a great artist to a great vintage..."

It is believed by many winemakers that winemaking is like painting, where the grapes are the canvas provided by the almighty Mother Nature. Champagne Taittinger nurtured the idea of art in wine and wine in art, inviting world famous artists to design the labels for champagne bottles. The birth of the Taittinger Collection series sees its 13th member in 2016. This collection is not just a list of the finest Champagnes, but also an archive of the quintessence of modern art.

□ Taittinger Collection Series #1 "Vasarely"	1978
□ Taittinger Collection Series #2 "Arman"	1981
□ Taittinger Collection Series #3 "Masson"	1982
□ Taittinger Collection Series #4 "Da Silva"	1983
□ Taittinger Collection Series #5 "Lichtenstein"	1985
□ Taittinger Collection Series #6 "Hartung"	1986
□ Taittinger Collection Series #7 "Imai"	1988
□ Taittinger Collection Series #8 "Corneille"	1990
□ Taittinger Collection Series #9 "Matta"	1992
□ Taittinger Collection Series #10 "Zao Wou Ki"	1998
□ Taittinger Collection Series #11 "Rauschenberg"	2000
□ Taittinger Collection Series #12 "Sow"	2002

Complete set of 12 bottles 11000

ULYSSE COLLIN "QUINTET" COLLECTION



In 2001, after his apprenticeship with Jacques-Selosse, Olivier Collin was inspired by the master Anselme Selosse to create his own Champagne with part of his family's vineyards in Sézennais. Driven by the same passion towards the land, Olivier carefully made Champagnes with respect to nature as much as possible.

This collection showcases the four parcels which Olivier has separately vinified and perfected throughout the years, a true expression of land and respect for the terroir.

- | | |
|---|------|
| □ Ulysse Collin Quintet Collection #1
"Les Enfers" Blanc de Blancs Extra Brut | 2010 |
| □ Ulysse Collin Quintet Collection #2
"Les Perrières" Blanc de Blancs Extra Brut | 2012 |
| □ Ulysse Collin Quintet Collection #3
"Les Roises" Blanc de Blancs Extra Brut | 2011 |
| □ Ulysse Collin Quintet Collection #4
"Les Maillons" Rosé de Saignée Extra Brut | 2012 |
| □ Ulysse Collin Quintet Collection #5
"Les Maillons" Blanc de Noirs Extra Brut | 2012 |

Complete set of 5 bottles 2000

JACQUES SELOSSE “LIEUX-DITS” COLLECTION



Champagne making was never easy, and has always been time and labour intensive. Due to the large amounts of capital required, Champagne production was originally dominated by big houses with financial power: Les Grandes Marques.

Les Grandes Marques, apart from owning vineyards and producing their own grapes, also purchased grapes from farmers, but these relationships did not hold for long.

As the technology and know how became more accessible to the farmers, they realised it was more profitable to make and bottle their own Champagnes; thus began a flourishing era of Grower (Récoltant-Manipulant) Champagne houses.

Among the first was Jacques Selosse, who started his humble Champagne house in the 1950s. Now the house is in the hands of Jacques' son Anselme, who brought the house to the pinnacle of Burgundian terroir-driven, biodynamic winemaking in Champagne.

This collection showcases the six specific parcels (Lieux-Dits) identified by Anselme as special and expressive in style, which he has separately vinified and perfected through the years.

- | | |
|--|----|
| □ Jacques Selosse “Lieux-Dits Sous Le Mont”
Extra Brut Blanc de Noirs (<i>Mareuil-sur-Aÿ, Premier Cru</i>) | NV |
| □ Jacques Selosse “Lieux-Dits Le Bout du Clos”
Extra Brut Blanc de Noirs (<i>Ambonnay, Grand Cru</i>) | NV |
| □ Jacques Selosse “Lieux-Dits La Côte Faron”
Extra Brut Blanc de Noirs (<i>Aÿ, Grand Cru</i>) | NV |
| □ Jacques Selosse “Lieux-Dits Les Carelles”
Extra Brut Blanc de Blancs (<i>Le Mesnil-sur-Oger, Grand Cru</i>) | NV |
| □ Jacques Selosse “Lieux-Dits Les Chantereines”
Extra Brut Blanc de Blancs (<i>Avize, Grand Cru</i>) | NV |
| □ Jacques Selosse “Lieux-Dits Chemin de Châlons”
Extra Brut Blanc de Blancs (<i>Cramant, Grand Cru</i>) | NV |

Complete set of 6 bottles 5000



WHITE WINES OF THE WORLD

Presenting our appreciation for the finer things in life.
A carefully curated collection sourced from all around the globe.

FRANCE

ALSACE

Alsace

Marcel Deiss	Riesling	2015	120
Domaine Weinbach Reserve Personelle	Gewurztraminer	2016	150

BURGUNDY

Chablis

Louis Moreau	Chardonnay	2015	100
Louis Moreau	Chardonnay	2017	100
Louis Moreau Grand Cru Valmur	Chardonnay	2012	190
Louis Moreau Grand Cru Les Clos	Chardonnay	2015	220
Jean-Paul & Benoît Droin 1er Cru Vaillons	Chardonnay	2013	150
Patrick Piuze Grand Cru Blanchots	Chardonnay	2015	240

Bourgogne

J.C. Ramonet	Aligoté	2014	120
--------------	---------	------	-----

Vougeot

Domaine de la Vougeraie 1er Cru "Les Clos Blanc de Vougeot" Monopole	Chardonnay	2005	500
Domaine de la Vougeraie 1er Cru "Les Clos Blanc de Vougeot" Monopole	Chardonnay	2002	600
Domaine de la Vougeraie 1er Cru "Les Clos Blanc de Vougeot" Monopole	Chardonnay	1999	600

The □ symbol denotes special bottles from the Family Collection.

Meursault

Domaine Michelot "Les Narvaux"	Chardonnay	2011	220
Domaine François Mikulski	Chardonnay	2005	410
Vincent Girardin 1er Cru Les Genevrières	Chardonnay	2005	430
Domaine des Comtes Lafon 1er Cru Charmes	Chardonnay	2001	900

Puligny-Montrachet

Domaine Faiveley	Chardonnay	2014	200
------------------	------------	------	-----

Saint-Aubin

Domaine Paul Pillot 1er Cru Les Charmois	Chardonnay	2014	150
--	------------	------	-----

Chassagne-Montrachet

Joseph Drouhin 1er Cru Morgeot "Marquis de Laguiche"	Chardonnay	2014	380
--	------------	------	-----

Corton-Charlemagne Grand Cru

Vincent Girardin	Chardonnay	2015	470
Domaine de la Vougeraie	Chardonnay	2006	700
Domaine de la Vougeraie	Chardonnay	2005	800
Domaine de la Vougeraie	Chardonnay	2000	800

Chevalier-Montrachet Grand Cru

Vincent Girardin	Chardonnay	2006	800
------------------	------------	------	-----

Bâtard-Montrachet Grand Cru

Vincent Girardin	Chardonnay	2006	1000
------------------	------------	------	------

Montrachet Grand Cru

Moret Nomine	Chardonnay	2006	1500
Domaine des Comtes Lafon	Chardonnay	2004	4000

BORDEAUXPessac-Léognan

□ Château Haut-Brion Blanc	Semillon, Sauvignon Blanc	1988	1480
□ Château Haut-Brion Blanc	Semillon, Sauvignon Blanc	1990	1680
□ Château Haut-Brion Blanc	Semillon, Sauvignon Blanc	1985	2280
Château Pape-Clément Blanc	Semillon, Sauvignon Blanc	2004	340

CHAMPAGNECôteaux Champenois

Domaine Dehors Mareuil Le Port	Chardonnay	2011	280
--------------------------------	------------	------	-----

LOIRE VALLEY

Savennières-Roche aux Moines

Mme Laroche, Domaine aux Moines Savennières-Roche aux Moines	Chenin Blanc	2013	150
Mme Laroche, Domaine aux Moines Savennières-Roche aux Moines	Chenin Blanc	1999	160

Saumur

Domaine Guiberteau	Chenin Blanc	2009	120
Domaine Guiberteau "Clos de Guichaux"	Chenin Blanc	2008	150
Thierry Germain, Domaine des Roches Neuves "L'Insolite"	Chenin Blanc	2011	130

Vouvray

François Pinon Moelleux	Chenin Blanc	2003	150
-------------------------	--------------	------	-----

Sancerre

Domaine Vacheron	Sauvignon Blanc	2017	120
------------------	-----------------	------	-----

RHONE VALLEY

Condrieu

Etienne Guigal	Viognier	2015	200
----------------	----------	------	-----

I.G.P Collines Rhodaniennes

Yves Cuilleron "Les Vignes d'à Côté"	Viognier	2015	120
--------------------------------------	----------	------	-----

LANGUEDOC-ROUSSILLON

I.G.P St-Guilhem-le-Désert Cité d'Aniane

V. Guibert de la Vaissière, Mas de Daumas Gassac	Viognier, Petit Manseng...	2016	180
--	----------------------------	------	-----

Languedoc

Domaine Rostaing Côteaux de Languedoc Puech Noble	Grenache Blanc, Viognier	2009	120
---	--------------------------	------	-----

JURA

Arbois

Rolet Tradition	Chardonnay, Savagnin	2011	120
Rolet Père et Fils Vin Jaune (62cl)	Savagnin	2009	160

SAVOIE

Chignin-Bergeron

André et Michel Quenard "Le Grand Rebossan"

Rousanne

2014

90

SOUTHWEST FRANCE

Côtes de Gascogne

Domaine du Tariquet Classic

Ugni Blanc, Colombard

2015

90

ITALY

FRIULI-VENEZIA GIULIA

Venezia Giulia IGT

Schiopetto "Des Rosis"

Radikon (50cl)

Pinot Grigio

2016

110

Ribolla Gialla

2010

170

VENETO

Sartori "Marani" Bianco Veronese IGT

Garganega

2015

120

PIEDMONT

Langhe DOC

Cristina Ascheri

Gaja Gaia & Rey

Arneis

2016

110

Chardonnay

2002

430

Barolo DOCG

Marchesi di Barolo Gavi

Cortese

2016

90

Monforte d'Alba DOCG

Giacomo Fenocchio

Roero Arneis

2016

100

CAMPANIA

Greco de Tufo DOCG

Terradora di Paolo Loggia della Serra

Greco

2016

120

Irpinia

Terradora di Paolo Corte di Giso

Falaghina

2016

120

SICILY

Terre Siciliane IGT

Cusumano Insolia

Inzolia

2015

90

SPAIN



LA RIOJA

Rioja DOCa

Hacienda Lopez de Haro

Montecillo Blanco

Viura

2017

80

Viura

2014

80

VAIS PASCO

Bizkaiko Txkolina DO

Gorka Izagirre

Ondarrabi Zuri

2015

90

GERMANY

MOSEL

Heymann-Löwenstein Schieferterrassen	Riesling	2009	90
Zilliken Butterfly	Riesling	2016	90
Reichsgraf von Kesselstatt "RK"	Riesling	2017	90
Schloss Lieser Niedberg Helden Spätlese	Riesling	2014	110
Schloss Lieser Wehlener Sonnenuhr Spätlese	Riesling	2016	110
Egon Müller Scharzhofberger Kabinett	Riesling	2011	220

RHEINHESSEN

Wagner-Stempel Heerkretz Spätlese	Riesling	2014	140
-----------------------------------	----------	------	-----

NAHE

Gut Hermannsberg "Just Riesling!"	Riesling	2015	80
Gut Hermannsberg "Just Riesling!"	Riesling	2016	80
Dönnhoff Roxheimer Höllenpfad Trocken	Riesling	2013	140

FRANKEN

<u>Würzburg</u>			
Juliuspital Würzburger Trocken	Riesling	2014	90

AUSTRIA

Kamptal DAC

Hirsch Kammerner Lamm Reserve	Grüner Veltliner	2011	160
Weingut Johann Topf "Hasel"	Sauvignon Blanc	2007	150

GEORGIA

KHAKETI

Vinoterra	Kisi	2012	145
-----------	------	------	-----

GREECE

AEGEAN ISLANDS

Santorini PDO

Sigalas

Assyrtiko

2016

150

MACEDONIA

Epanomi PGI

Ktima Gerovassiliou Single Vineyard

Malagousia

2016

140

CRETE

Silva Daskalaki "Emphasis"

Plyto, Sauvignon Blanc

2016

110

SWITZERLAND

VALASI

Cave Valcombe Blanc d'Amour Fendant

Chasselas

2015

80

AUSTRALIA

VICTORIA

Yarra Valley

Coldstream Hills

Chardonnay

2016

120

Pyrenees

Tournon Landsborough

Chardonnay

2016

120

TASMANIA

Hobart

Domaine Simha "Rani"

Riesling

2013

225

NEW ZEALAND

Huia	MARLBOROUGH	Sauvignon Blanc	2016	100
------	-------------	-----------------	------	-----

USA

<u>Russian River Valley</u> Jordan	SONOMA COUNTY	Chardonnay	2015	180
---------------------------------------	---------------	------------	------	-----

ROSÉ FRANCE

M de Minuty	PROVENCE	Grenache, Cinsault	2018	80
-------------	----------	--------------------	------	----

ROSÉ AUSTRALIA

Tournon Mathilda	VICTORIA	Grenache	2018	80
------------------	----------	----------	------	----



RED WINES OF THE WORLD

Our love for crimson knows no bounds.
We welcome you to discover all we have to offer.

FRANCE

ALSACE

Alsace

Famille Hugel Classic	Pinot Noir	2013	120
-----------------------	------------	------	-----

CHAMPAGNE

Côteaux Champenois

Baron d'Auvergne Bouzy Grand Cru	Pinot Noir	2015	170
Pierre Paillard Les Mignottes Bouzy Rouge	Pinot Noir	2012	180
Lanson Bouzy Grand Cru	Pinot Noir	NV	240
Paul Bara Bouzy Grand Cru	Pinot Noir	2008	240
Bollinger "La Côte aux Enfants" Aÿ Grand Cru	Pinot Noir	2013	260
Domaine Dehours "La Croix Joly"	Pinot Noir	2012	280
Larmandier-Bernier Vertus Premier Cru	Pinot Noir	2012	290
Egly Ouriet "Cuvée des Grands Côtés" Ambonnay Grand Cru	Pinot Noir	2012	300
Egly Ouriet "Cuvée des Grands Côtés" Ambonnay Grand Cru	Pinot Noir	2015	480

BURGUNDY

Bourgogne

Vincent Girardin "Cuveé St Vincent"	Pinot Noir	2016	100
-------------------------------------	------------	------	-----

Gevrey-Chambertin

Charles Van Canneyt	Pinot Noir	2014	240
Domaine Joseph Roty	Pinot Noir	2014	240
Hospices de Nuits "Les Champs Chenys Cuvée Irène Noblet"	Pinot Noir	2009	600

Chambolle-Musigny

Domaine François Bertheau	Pinot Noir	2013	240
Domaine François Bertheau	Pinot Noir	2014	240

Nuits-Saint-Georges

Domaine Arnoux-Lachaux	Pinot Noir	2011	200
Domaine Arnoux-Lachaux 1er Cru "Clos des Corvées Pagets"	Pinot Noir	2011	200
Domaine Arnoux-Lachaux 1er Cru "Clos des Corvées Pagets"	Pinot Noir	2008	310

Gevrey-Chambertin 1er Cru

Dugat-Py 1er Cru "Petite Chapelle"	Pinot Noir	2011	600
------------------------------------	------------	------	-----

Chambertin Grand Cru

Domaine Armand Rousseau Pere & Fils	Pinot Noir	2000	4800
Domaine Armand Rousseau Pere & Fils	Pinot Noir	1999	5000

Charmes-Chambertin Grand Cru

Geantet-Pansiot	Pinot Noir	2005	900
Domaine Joseph Roty "Cuvée de Très Vieilles Vignes"	Pinot Noir	1997	1000
Philippe Pacalet	Pinot Noir	2005	1100

Clos de Vougeot Grand Cru

Nicolas Potel	Pinot Noir	2005	1400
---------------	------------	------	------

Musigny Grand Cru

Antonin Rodet, Domaine Jacques Prieur	Pinot Noir	2002	1000
Domaine de la Vougeraie	Pinot Noir	2000	2000
Domaine de la Vougeraie	Pinot Noir	2003	2100
Domaine de la Vougeraie	Pinot Noir	2006	2200

Bonnes Mares Grand Cru

Domaine de la Vougeraie	Pinot Noir	2005	800
Domaine de la Vougeraie	Pinot Noir	2006	800
Domaine de la Vougeraie	Pinot Noir	2000	1000

Clos de la Roche Grand Cru

Lucie et Auguste Lignier	Pinot Noir	2001	1400
Domaine Pierre Amiot et Fils	Pinot Noir	1979	1400

BORDEAUX

Haut-Médoc

Château Rouchet	Merlot	2014	120
Château Sénéjac	Cabernet Sauvignon, Merlot	2010	120
Château Charmail (150cl)	Cabernet Sauvignon, Merlot	2006	300

Saint-Estèphe

Château Montrose	Cabernet Sauvignon, Merlot	2002	465
------------------	----------------------------	------	-----

Pauillac

Château Croizet-Bages	Cabernet Sauvignon, Merlot	1988	230
Château Latour	Cabernet Sauvignon, Merlot	1995	2500
Château Lafite-Rothschild	Cabernet Sauvignon, Merlot	2005	3000
Château Lafite-Rothschild	Cabernet Sauvignon, Merlot	1989	6000
Château Lafite-Rothschild	Cabernet Sauvignon, Merlot	1982	8000
Baron Philippe de Rothschild, Château Mouton Rothschild	Cabernet Sauvignon, Merlot	1982	7000

Saint-Julien

Château Gloria	Cabernet Sauvignon, Merlot	2012	210
Château Saint Pierre Sevaistre	Cabernet Sauvignon, Merlot	1979	350
Château Gruaud Larose	Cabernet Sauvignon, Merlot	1992	365
Château Léoville Barton	Cabernet Sauvignon, Merlot	1993	405

Margaux

Château Margaux	Cabernet Sauvignon, Merlot	1982	6000
Château Palmer	Cabernet Sauvignon, Merlot	1961	9000

Pessac-Léognan

Château Haut-Brion	Cabernet Sauvignon, Merlot	1975	2500
Château Haut-Brion	Cabernet Sauvignon, Merlot	1964	2500
Château Haut-Brion	Cabernet Sauvignon, Merlot	1982	6000

Pomerol

Château Pétrus	Merlot	1992	3500
□ Château Pétrus	Merlot	2004	5000
□ Château Pétrus	Merlot	1975	5150
□ Château Pétrus	Merlot	1989	9800

Saint-Émilion Grand Cru

Château Gravet Renaissance	Merlot/ Cabernet Franc	2008	160
□ Château Cheval Blanc	Cabernet Franc/ Merlot	1990	2700

BEAUJOLAIS

Côte de Brouilly

Jean Claude Lapalu Gamay 2017 120

LOIRE VALLEY

Saumur-Champigny

Antoine Sanzay Cabernet Franc 2014 120
 Domaine Guiberteau "Les Arboises" Cabernet Franc 2007 210

RHÔNE VALLEY

Côtes du Rhône

Eric Texier "St-Julien-en-St-Albane" Syrah 2015 120

Hermitage

Chapoutier "Les Greffieux" Syrah 2013 570
 Chapoutier "Le Méal" Syrah 2012 670
 Chapoutier "Le Pavillon" Syrah 2006 900

Saint-Joseph

Pierre Gonon Syrah 2015 170

Cornas

Alain Voge "Les Vieilles Vignes" Syrah 2011 240

Châteauneuf-du-Pape

Domaine du Pégau "Cuvée Réservee" Grenache, Syrah 2013 170
 Château La Nerthe Grenache, Syrah 2015 270

LANGUEDOC-ROUSSILLON

I.G.P St-Guilhem-le-Désert Cité d'Aniane

V.Guibert de la Vaissière, Mas de Daumas Gassac Cabernet Sauvignon, Merlot 2013 180

PROVENCE

Bandol

Domaine Tempier Mourvèdre, Grenache 2013 220

JURA

Arbois Pupillin

Domaine Rolet Trousseau 2012 120

VIN DE FRANCE

Domaine Saladin "Inflorescence"	Grenache, Cinsault	2016	140
---------------------------------	--------------------	------	-----

ITALY

PIEDMONT

Barolo DOCG

Marchesi de Barolo "Madonna del Dono" Dolcetto d'Alba	Nebbiolo	2016	100
Luigi Scavino, Azienda Agricola Azelia	Nebbiolo	2010	160
Giovanni Rosso "Cerretta"	Nebbiolo	2005	310

Langhe DOC

La Spinetta	Nebbiolo	2015	130
Mauro Veglio "Angelo"	Nebbiolo	2012	150
Proprietà Sperino "Uvaggio"	Nebbiolo	2014	150

VENETO

Amarone della Valpolicella DOCG

Tommasi	Corvina, Rondinella	2013	170
---------	---------------------	------	-----

TUSCANY

Poggio Verrano "3"	Cabernet Sauvignon, Merlot	2009	150
--------------------	----------------------------	------	-----

Bolgheri DOC

Ornellaia	Cabernet Sauvignon, Merlot	2014	670
Ornellaia	Cabernet Sauvignon, Merlot	2015	690

Chianti Classico DOCG

Nittardi "Casanuova di Nittardi" Vigna Doghessa	Sangiovese	2014	150
---	------------	------	-----

Brunello di Montalcino DOCG

Jacopo Biondi-Santi, Tenuta Greppo "Annata"	Sangiovese	2009	380
Jacopo Biondi-Santi, Tenuta Greppo "Annata"	Sangiovese	2007	400

CAMPANIA

Taurasi DOCG

Feudi San Gregorio	Aglianico	2011	130
--------------------	-----------	------	-----

Irpinia

Terradora di Paolo il Principio	Aglianico	2008	120
---------------------------------	-----------	------	-----

SPAIN

LA RIOJA

Rioja DOCA

Marqués de Tomares Crianza	Tempranillo	2016	90
R.Lopez de Heredia, Viña Tondonia Reserva	Tempranillo	2004	170
Montecillo "Selección Especial" Gran Reserva	Tempranillo	1994	270

GERMANY

AHR

Weingut Meyer-Näkel Neuenahrer Sonnenberg Spätburgunder GG	Pinot Noir	2011	220
Weingut Meyer-Näkel Neuenahrer Sonnenberg Spätburgunder GG	Pinot Noir	2007	250

BADEN

Meyer-Näkel Klumpp "Hand in Hand" Spätburgunder	Pinot Noir	2014	100
Weingut Bernhard Huber	Pinot Noir	2014	120
Weingut Bernhard Huber Malterdinger Spätburgunder	Pinot Noir	2012	145

PFALZ

A.Christmann Spätburgunder	Pinot Noir	2013	120
----------------------------	------------	------	-----

AUSTRIA

BURGENLAND

J.Heinrich Ried Goldberg	Blaufränkisch	2014	100
Hannes Reeh "Unplugged"	Zweigelt	2013	105

GREECE

CRETE

Lyrarakis	Kotsifali	2015	90
-----------	-----------	------	----

LEBANON

BEKAA VALLEY

Gaston Hochar, Château Musar	Cabernet Sauvignon, Cinsault	2000	295
Gaston Hochar, Château Musar	Cabernet Sauvignon, Cinsault	2001	280
Gaston Hochar, Château Musar	Cabernet Sauvignon, Cinsault	2002	280
Gaston Hochar, Château Musar	Cabernet Sauvignon, Cinsault	2003	280
Gaston Hochar, Château Musar	Cabernet Sauvignon, Cinsault	2004	260
Gaston Hochar, Château Musar	Cabernet Sauvignon, Cinsault	2005	280
Gaston Hochar, Château Musar	Cabernet Sauvignon, Cinsault	2006	250
Gaston Hochar, Château Musar	Cabernet Sauvignon, Cinsault	2007	260
Gaston Hochar, Château Musar	Cabernet Sauvignon, Cinsault	2008	280

AUSTRALIA

VICTORIA

Tournon Lady's Lane Vineyard	Shiraz	2014	150
William Downie	Pinot Noir	2015	240

MOUNT LOFTY RANGES

<i>Adelaide Hills</i>			
Shaw + Smith Balhannah	Shiraz	2014	210

BAROSSA

Glaetzer Bishop	Shiraz	2016	190
Henschke Keyneton Euphonium	Shiraz Blend	2013	250

WESTERN AUSTRALIA

Peccavi	Cabernet Sauvignon	2014	150
---------	--------------------	------	-----

TASMANIA

Coal River Valley

Tolpuddle	Pinot Noir	2014	210
-----------	------------	------	-----

NEW ZEALAND

CENTRAL OTAGO

Two Paddocks "Picnic"	Pinot Noir	2017	120
Burn Cottage Vineyard "Moonlight Race"	Pinot Noir	2015	160

ARGENTINA

Salentein	Malbec	2015	150
Cheval des Andes	Malbec	2015	250

CHILE

MAIPO

Puente Alto

Almaviva	Cabernet Sauvignon, Carmenere	2012	520
----------	----------------------------------	------	-----

Almaviva	Cabernet Sauvignon, Carmenere	2013	520
----------	----------------------------------	------	-----

Almaviva	Cabernet Sauvignon, Carmenere	2014	520
----------	----------------------------------	------	-----

Santiago

Don Melchor	Cabernet Sauvignon, Cabernet Franc	2012	280
-------------	---------------------------------------	------	-----

USA

WALLA WALLA VALLEY

L'Ecole Ferguson	Cabernet Sauvignon	2015	260
L'Ecole Ferguson	Cabernet Sauvignon	2014	290
L'Ecole Perigee	Cabernet Sauvignon	2015	260
L'Ecole Perigee	Cabernet Sauvignon	2014	270

SONOMA COUNTY

Cruse Wines "Charles Heintz"	Syrah	2015	170
<i>Dry Creek Valley</i>			
Dashe Cellars	Zinfandel	2014	130
Ridge Vineyards "Lytton Springs"	Zinfandel	2012	165

NAPA COUNTY

<i>Napa Valley</i>			
Beaulieu Vineyards	Cabernet Sauvignon	2015	90
Stag Leap	Merlot	2015	150
Opus One	Cabernet Sauvignon	2011	1975

MENDOCINO COUNTY

Cruse Wines "Alder Springs"	Tannat	2015	170
-----------------------------	--------	------	-----

SANTA BARBARA COUNTY

Tyler	Pinot Noir	2015	160
-------	------------	------	-----

SOUTH AFRICA

CAPE

The Drift Moon Rabbit
GiftHorse

Pinotage
Barbera

2017
2017

115
265

CHINA

YUNNAN

Ao Yun

Cabernet Sauvignon

2014

600



SWEET WINES OF THE WORLD

Our nectarous offerings for your intense pleasure.
Partake in a bottle fit for any occasion.

FRANCE

CHAMPAGNE

Ratafia de Champagne

Guy Charlemagne

Egly Ouriet

Henri Giraud (50cl)

Pinot Noir

NV

36 (glass) / 230

Pinot Noir

NV

38 (glass) / 240

Pinot Noir

NV

40 (glass) / 270

BORDEAUX

Sauternes

Château Lange Reglat

Château d'Yquem

Sauvignon Blanc, Semillon

2010

32 (glass) / 160

Sauvignon Blanc, Semillon

1996

950

RHONE VALLEY

Condrieu

Yves Cuilleron "Ayuets" (50cl)

Viognier

2006

260

GERMANY

MOSEL

Forstmeister Gelte Zilliken Rausch Austese

Riesling

2016

240

HUNGARY

TOKAJ

Holdvölgy "Exaltation" Nyulászó (50cl)

Muscat a Petits Grains

2013

120

Tokaj-Hegyalja Mád

Holdvölgy Expression "Becsek"

Tokaji Harslevelü

2009

135

ITALY

VENETO

Graziano "Pra" Passito

Garganega

2015

120

PUGLIA

Polvanera

Aliatico

2013

80

