

ATLAS

Drinking of the Arts Décoratifs. Also known as

THE GOLDEN AGE

THE GILDED AGE

THE CRAZY AGE

"Too much of anything is bad, but too much Champagne is just right."

– F. Scott Fitzgerald

"I had never tasted anything so cool and clean (as a martini)."

– Ernest Hemingway

www.atlasbar.sg #atlasbarsg

prices are subject to 10% service charge and prevailing government taxes



FINE CHAMPAGNE

For our ATLAS habitués, we propose to start the afternoon or evening with a small selection of fine Champagnes to be drunk by the tulip, if not by the bottle.

For the complete Champagne journey, please ask for the ATLAS Collections menu.

		Glass (125ml)	Bottle
Louis Roederer "Brut Premier" Magnum <i>refreshing with elegant hints of floral notes</i>	NV	22	240
Bruno Paillard "Première Cuvée" Extra Brut <i>hazelnuts, toasty and a touch of yellow apples</i>	NV	28	140
Pierre Péters "Reserve Privée" Blanc de Blancs Grand Cru <i>refreshing with notes of green apples and fresh pear</i>	NV	30	150
Chartogne-Taillet "Les Beaux Sens" Blanc de Noirs Extra Brut <i>baked apples, brioche backed by a surreal acidity</i>	NV	36	190
Krug "Grande Cuvée" (Served with a snack) <i>rich and intense with an underlying notes of mushroom</i>	NV	55	280
Louis Roederer Rosé Magnum <i>vibrant red fruits, refreshing with lots of finesse</i>	2008	38	380
Serge Mathieu "Cuvée Prestige" <i>crisp, elegant and light with notes of ripe pears</i>	NV		120
Benoit Lahaye Blanc de Noirs <i>orange peel, creamy with an amazing acidity</i>	NV		160
Drappier "Quattuor" Blanc de Blancs <i>the forgotten white grapes of champagne, crisp with notes of jasmine and melons</i>	NV		180
Nominé Renard "Special Club" <i>packed with toasted nuts and a nice mineral tone at the same time</i>	2011		190
Larmandier-Bernier Rosé de Saignée Premier Cru Extra Brut <i>raspberries, intense and concentrated, masculine style</i>	NV		190



THE MARTINI

Our great passion: gin and gin splashing. While we propose these martini incarnations, do help yourself to your own martini devices and ask for the bartender.

For the complete gin journey, please ask for the ATLAS Collections menu.

The ATLAS Martini

24

london dry gin, ambrato vermouth, orange bitters, champagne vinegar
strong, cold and floral, with a little lick of the wild

The Luis Buñuel Martini

24

london dry gin, italian dry vermouth, ATLAS bitters blend
cold and crisp, with a surrealist whisper of the dry

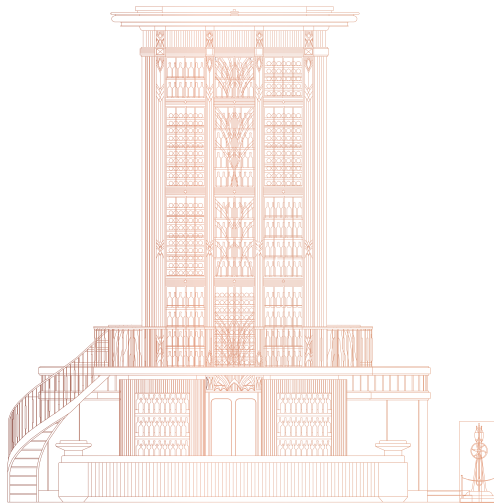
The Aix-en-Provence Martini

24

french modern gin, french dry vermouth,
herbes-de-provence, lavender
salted soft herbs, wafting through a frozen liquid

**“Martinis are the only American invention
as perfect as a sonnet.”**

– H. L. Mencken



COCKTAILS DES ARTS DÉCORATIFS



Art Deco as modernism beautified. A strong, clean and ornate aesthetic. An intersection of design, fashion, art and industry that reached an apogee at the 1925 Exposition des Arts Décoratifs et Industriels Modernes in Paris. Grand cocktails inspired by a moment in time.



BRIGHT YOUNG THINGS



The privileged, fashionable and bohemian set
of relentless London party-goers during the Gilded Age.
Flavours with spirit, elegance and uninhibited booziness.

- | | |
|---|-----------|
| Café Royal Special
london dry gin, sloe berry gin, pineapple, italian sweet vermouth,
lemon, champagne, edibles
<i>adapted from the canon of a site of many debauched soirees</i> | 25 |
| Cecil Beaton
rare australian spiced dry gin, hibiscus water, earl grey tea, baking
spices, citrus, milk
<i>a best dressed illustrator and photographer of the young things</i> | 22 |
| Scandal Water
unusual scottish gin, italian dry vermouth, geranium, palmarosa,
citrus, bitters, champagne
<i>scandals over tea became scandals over gin and chanel no. 5</i> | 25 |
| Young Churchill
salty smoky islay single malt, herbal liqueur, orange bitters,
chocolate, capers
<i>a smokey, spiced tribute to winston in his prime</i> | 28 |



STYLE MODERNE



Form with function. Style Moderne defined this alliance of art and craftsmanship,
touching engineering, architecture, design, fashion and more.
Flavours that provoke and inspire.

S.S. Normandie fine calvados, peach, peach liqueur, almond cordial, citrus, salt <i>the most luxurious art deco cruise liner the world ever did see</i>	22
The Great Jeweler ATLAS special orange gin, green herbal elixir, italian sweet vermouth, orange bitters <i>an homage to the savoy and rene lalique, art deco's revered jeweler</i>	24
Swedish Grace swedish punsch spiced rum, raspberry liqueur, ginger vinegar, herbal liqueur, citrus <i>art deco the scandinavian way, tall and adorned with all the fixtures</i>	23
Tutankhamen young mexican mezcal, cypress cordial, chamomile liqueur, lemon <i>a tomb full of gold and wonder, exoticism comes to art deco</i>	24



LOST GENERATION



A génération perdue. Artists, writers and musicians who came of age after WWI.
The cultural canvas of 1920s Paris. Flavours to drink up, as one should life.

- | | |
|---|-----------|
| The Art of looking Sideways
aged old tom gin, angelica, pineapple vinegar, lemon, bitters,
hanky panky
<i>whether excitement, nervousness or reapplying your cocktail,
there's an art</i> | 24 |
| Josephine Baker
Kentucky bourbon, sweet sherry, french sweet vermouth,
red wine vinegar
<i>a chorus girl from st. louis, who became the toast of paris</i> | 28 |
| Lost & Found
blended malt scotch whisky, sweet & dry sherries,
chocolate bitters, citrus, raspberry
<i>a twist on the artist's special from the rue pigalle jazz club</i> | 24 |
| Bohemian Aristocrat
real french cognac, beurre noisette, venezuelan dark rum,
orange & pear liqueur, bitters
<i>butter for your toast, a toast to the night and to the next drink</i> | 25 |



THE ARTISTS



A toast from purveyors of fine beverage to the purveyors of Art Deco.
The artists célébrité who defined the era. Bold and colourful flavours and textures.

Tamara in a Green Bugatti	22
modern french gin, lavender tincture, much mint, lemon, sugar <i>a poster girl for a movement, an automobile for the ages</i>	
Erté	26
modern french gin, ylang ylang cordial, gentian liqueur, ratafia de champagne, thyme sugar <i>an iconic fashion illustrator known for his 'eyes'</i>	
Cassandre	25
aged french gin, french quinine wine, italian cherry liqueur, green cardamom, chocolate <i>the original don draper, but with even more style</i>	
Imperial Fizz Nouveau	24
modern french gin, rose cordial, angelica, orange blossom, cream, citrus, soda <i>the mightiest fluffy cocktail, only an imperial shake will do</i>	



EUROPEAN TEMPERANCE

No Alcohol Cocktails



While Americans suffered greatly through the Noble Experiment, Europe celebrated. But what if the same temperance forces amassed on the Avenue des Champs-Élysées?

London Southside Fizz	12
botanical cordial, rhubarb marmalade, lime, mint, soda <i>a speak-low cocktail of chicago, with a teetotaller london fix</i>	
Summer in Paris	12
chardonnay grape juice, lavender cordial, lemon, lemon berry tea soda <i>without wine & without gin, the next best option</i>	
Aviation	12
botanical cordial, butterfly pea flower water, lemon <i>an american concoction, without the jet fuel</i>	
White Lady	12
botanical cordial, gentian syrup, orange blossom water, lemon <i>the classic parisian sour, softened sans gin</i>	



“The well made cocktail
is one of the most gracious of drinks.
It pleases the senses.

The shared delight of those who partake in common of
this refreshing nectar breaks the ice of formal reserve.
Taut nerves relax; taut muscles relax; tired eyes
brighten; tongues loosen; friendships deepen;

the whole world becomes a better place
in which to live.”

– David A. Embury, *The Fine Art of Mixing Drinks*





THE GIN & TONIC

The peerless G&T. An iconic refresher that evolved from a British colonial staple to a culinary and social wonder. Just three options here, but infinite possibilities in The ATLAS Collections. Paired with our own East Imperial ATLAS tonic water.

For the complete gin journey, please ask for the ATLAS Collections menu.

THE GIN & TONIC



Classic G&T	19
london dry gin, fresh citrus to match, ATLAS tonic water <i>a tonic for when the sun shines on London, or its former outposts around the globe</i>	
Gin Tonica	22
modern american gin, grapefruit, juniper, grapefruit tonic water <i>an ode to spain, where gin reigns</i>	
Temperance G&T (No Alcohol)	12
botanical cordial, lime, ATLAS tonic water <i>for those who can only sustain a lesser form of enlightenment</i>	

“The gin and tonic has saved more Englishmen’s lives,
and minds, than all the doctors in the Empire”

– Winston Churchill



ATLAS VINTAGE

ATLAS is a dedication to the glamour, sophistication and discernment of a time gone by. With our vintage offerings, we invite you to step back into the heart of the Art Deco era. Explore these antique treasures from The Atlas Collections.

VINTAGE MARTINIS



Like art, music and food, our taste in martinis and gin has evolved over the decades. For the most discerning martini drinker, we propose a voyage back in time to taste history in a bottle.

Choose a gin from the decade of your choice from our collection, paired with a vintage vermouth

1910s	250
1920s	225
1930s	200
1940s	175
1950s	150
1960s	125
1970s	100
1980s	75
1990s	50



VINTAGE COCKTAILS



For the true cocktail aficionado, we offer a rare opportunity to taste an icon at its moment of birth. Cocktails that define modern drinking 80 years later, prepared with the style and ingredients of the time.

The Florentine Negroni

200

1920s florentine london dry gin, 1930s italian sweet vermouth, vintage campari

a gin the count himself may have enjoyed at caffè casoni, Florence

The Deco White Lady

200

1920s london dry gin, vintage orange liqueur, lemon

a collaboration of london and Paris, a vintage tribute to the Harrys

One Night In 1925

A warm Parisian summer evening, after an inspired day at the Exposition des Arts Décoratifs et Industriels Modernes. Vintage aperitifs, gins, champagnes and whiskies of the period. Cuisine inspired by the famed Ritz Hotel, home to Hemingway and Chanel. Personal service by our Maitre D', Head Bartender and Executive Chef. A once-in-a-lifetime moment.

Price Upon Inquiry.
Minimum Four Guests.
With Advance Booking.



STILL WINES

While Champagne is our true vinous love,
our enjoyment of all wines knows no bounds.

For the complete wine journey, please ask for the ATLAS Collections menu.

WHITE



		Glass (150ml)	Bottle
Weingut Zilliken Butterfly Riesling Mosel, Germany <i>refreshing, packed with minerals and a touch of sweetness</i>	2015	16	80
Domaine Vacheron Sancerre Blanc Sauvignon Blanc Loire Valley, France <i>crisp, light and a high mineral tone with a touch of greeness</i>	2015	18	90
Domaine Laroche Chablis Saint Martin Chardonnay Burgundy, France <i>rock melons, fresh and clean with a nice salinity</i>	2014	20	100
André & Michel Quenard Chignin Bergeron "Le Grand Rebossan" Rousanne Savoie, France <i>white flowers, apricots and white peaches</i>	2014		95
Dog Point Sauvignon Blanc Marlborough, New Zealand <i>classic notes of lime, grass and passionfruits</i>	2014		100
Domaine Rémi Jobard Meursault "Les Narvaux" Chardonnay Burgundy, France <i>rich, buttery with notes of hazelnuts</i>	2009		170

RED

		Glass (150ml)	Bottle
Domaine de la Grand'Cour Fleurie "Clos de la Grand' Cour" Gamay Beaujolais, France <i>ripe strawberries, juicy with soft silky tannins and a touch of spice</i>	2014	18	90
Château Potensac Cru Bourgeois Exceptionnel Cabernet Sauvignon Bordeaux, France <i>medium bodied with notes of plums and cassis</i>	2006	20	100
Domaine Vincent Girardin Savigny-Les-Beaune Premier Cru Les Serpentières Pinot Noir Burgundy, France <i>red cherries and raspberries backed by a fresh acidity</i>	2010	22	110
Fattoria Nittardi Chianti Classico "Casanuova di Nittardi" Sangiovese Tuscany, Italy <i>sour cherries, with hints of spice and violet flowers</i>	2013		115
Pierre Paillard Bouzy Rouge "Les Mignottes" Coteaux Champenois Pinot Noir Champagne, France <i>a red wine from champagne, light and refreshing with hints of greenness</i>	2010		145
Chateau Musar Cabernet Sauvignon Bekaa Valley, Lebanon <i>Intense mature notes of overripe plums with hints of mushroom and leather</i>	2001		180

ROSÉ

Domaine Ott By Ott Grenache Provence, France <i>bright red strawberries with a long lingering finish</i>	2015	14	70
---	------	----	----



BARLEY, HOPS, APPLES & HONEY

A sharp selection of classic English and European beers, cider and mead.
A mix of the old and the new.

Pilsner Urquell From The Tap	450 ml	4.4%	15
Estrella Galicia Classica Lager	330ml	5.5%	16
Sambrooks Brewery London Pale Ale	330ml	4.5%	16
Westmalle Trappist Tripel	330ml	9.5%	19
Duvel Golden Strong Ale	330ml	8.5%	19
Pearl Jet Stout	500ml	4.5%	20
Aspall's Suffolk Draught Cyder	500ml	5.5%	20
Gosnells London Mead	330ml	5.5%	17

“A fine beer may be judged with only one sip,
but it’s better to be thoroughly sure.”

– Czech Proverb



SODAS, TONICS & FRUITS

Perfect companions to our spirits or refreshing on their own.

SOFTS

East Imperial Soda Water	150ml	8
East Imperial Mombasa Ginger Beer	150ml	8
East Imperial Superior Thai Ginger Ale	150ml	8
Coca Cola	250ml	6
Diet Coca Cola	330ml	7
Sprite	250ml	6

TONICS

East Imperial ATLAS Burma Tonic	150ml	8
East Imperial Old World Tonic	150ml	8
East Imperial Grapefruit Tonic	150ml	8
East Imperial Yuzu Tonic	150ml	8
Fever Tree Mediterranean Tonic	200ml	8
Fever Tree Elderflower Tonic	200ml	8

JUICE

Fresh pressed (orange, pomelo, apple, pineapple)	8
Bottled (tomato, cranberry)	8

MINERAL WATER

San Pellegrino	750ml	11
Aqua Panna	750ml	11

ATLAS WATER

We are committed to reducing our carbon footprint.
Our in-house water filtering and bottling system ensures the purest water
we can serve whilst retaining beneficial mineral salts.

Your choice of free flow still and sparkling water for \$2 per guest*

*\$1 per guest will be donated to WildAid. WildAid works to reduce global
consumption of wildlife products with a mission to end the illegal wildlife trade.



LEAVES, OOLONGS & TISANES

Our tea master proposes a selection of classic and exotic teas from around the world. All teas are loose leaf.

The ATLAS Art Deco Blend

10

blended just for us, this is a fine black tea incorporating dry gin botanicals, with added elderflower and yuzu.

TRADITIONAL TEAS

8

Royal English Breakfast

a vibrant blend of kenyan milima, kenilworth from sri lanka and assam dejoo from india

Regal Earl Grey

premium mild tea blended with organic vanilla & bergamot for a smooth and creamy taste

Milk Oolong

a buttery and mineral forward tea from taiwan with a hint of spice

Royal Majesty

an assortment of sweet flowers and sri lankan black teas floral, refreshing, unique

Gentleman Black

a bold blend of nepalese black teas with earthy and floral notes combined

Organic Mint

a refreshing blend of sweet menthol spearmint & peppermint

Tropical Straits

a sunny blend of tropical fruits tisanes and oolong tea papaya, pineapple & more

Aromatherapy in a Cup

a copper-y infusion of flowers and mint with sweet lemon balm

Carmelia Bud

chinese white tea with soft tones of apricot with a fresh finish

Huoshan Yellow Bud

this rare chinese yellow tea has soft vegetal mellowness

Arakai Estate Premium Green

an australian spring flush green tea that produces lingering sweetness

Jasmine Pearls

one of the finest chinese jasmine teas, with 20 times the jasmine scent of normal teas

Emperor's Genmaicha

appetizing green tea with toasty cracked rice and green flowers

Formosa Oriental Beauty

the champagne of oolongs from taiwan, with a rich honey character

Doke Diamond

an indian black tea with a strong sense of honey

Himalayan Shangri-La Gold

an intricate black tea from nepal with rich amber honey and malt notes

Sicilian Blood Orange Pu Erh Tea

this is a vintage, fermented black tea pu erh cured with orange peel

Berry Rooibos

an invigorating vanilla sensation mixed with rooibos and elderberry

Family Collection Teas**Market Price**

Please enquire about the current offerings from the Parkview family collection of vintage and exceptionally rare teas.



BEANS, CHAI & CHOCOLATE

Seasonal espresso blends sourced globally and proudly roasted in Singapore by Liberty Coffee. The 'Speakeasy' blend is rich and balanced, with overtones of nuts and chocolate and a low level of acidity.

Espresso / Black / Strong	30ml	4
Americano / Black / Balanced	170ml	4
Piccolo Latte / Milk / Mild	90ml	5
Atlas Gibraltar / Milk / Strong	130ml	5
Cappuccino / Milk / Balanced	170ml	6
Latte / Milk / Mild	200ml	6
Flat White / Milk / Mild	200ml	6
Additional Espresso Double Shot		2
Ice Long Black / Black / Cold / Balanced	330ml	5
Ice White / Milk / Cold / Mild	330ml	6
Mocha Latte / Milk / Balanced	200ml	7
Ice Mocha / Milk / Cold / Balanced	330ml	7
Drinking Chocolate 52% Dark / Milk / Hot / Sweet	170ml	7
Seven Spice Chai Latte / Milk / Hot / Sweet	170ml	7



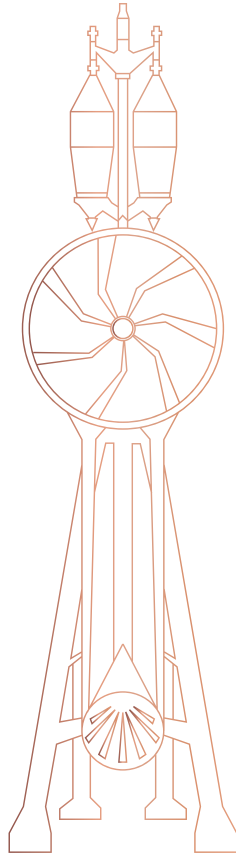
LATE NIGHT DINING

Let us sustain you while you drink, laugh and live.
Chef presents a small but nourishing selection to graze on while imbibing.

ATLAS olives four ways	10
Belgian pomme frites, horseradish, himalayan pink salt	12
Handcut iberico ham on toast	14
Homemade salt & vinegar crisps, deep fried whitebait	15
Toasted sourdough, rice crackers, sundried tomato dip	12
Pork & duck terrine, mini apples, mustards	24
Artisanal charcuterie (ask for daily selection)	32
European cheese board (ask for daily selection)	32
Assortment of petit fours	18
Bruschetta triumph of the sea, blue prawn tartar, sea urchin, pomegranate, oscietra	28
Mini croque monsieur, fancy spanish cheese, rocket	16
London spicy chorizo sandwiches, capsicum, rocket	24

“People who love to eat
are always the best people.”

– Julia Child



CRAWLEY'S IMPERIAL SHAKER MACHINE NO. 1